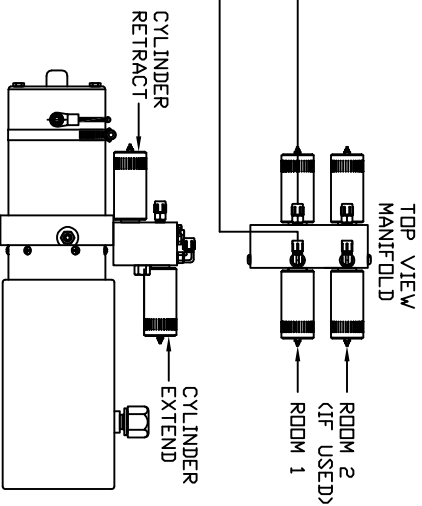


NOTE: BOTH ROOMS ARE CONNECTED IN THE SAME MANNER IF AP42297 CONTROL PACKAGE IS USED.

- Ⓐ AP4059 HOSE ASSY 04 x 36' RODD END - ALWAYS PRESSURIZED
- Ⓑ AP4059 HOSE ASSY 04 x 36' CAP END
- Ⓒ AP50659 HOSE ASSY 03 x 108' RODD END - ALWAYS PRESSURIZED - MUST BE HIGH PRESSURE HOSES OF EQUAL LENGTH AND DIAMETER
- Ⓓ AP4074 HOSE ASSY 04 x 108' CAP END - MUST MAINTAIN EQUAL LENGTH AND DIAMETER

- Ⓔ AP50907 HOSE ASSY 03 x 48' RODD END - ALWAYS PRESSURIZED - MUST BE HIGH PRESSURE HOSES OF EQUAL LENGTH AND DIAMETER
- Ⓕ AP50671 HOSE ASSY 03 x 84' CAP END - MUST MAINTAIN EQUAL LENGTH AND DIAMETER

NOTE: HOSES Ⓔ AND Ⓕ ARE INCLUDED WITH THE ROOM EXTENSION MECHANISM



SIDE VIEW PUMP/MANIFOLD
 AP31479 - PART OF AP42295
 AP31727 - PART OF AP42297
 LOCATION AND ORIENTATION OF PUMP/MANIFOLD ASSEMBLY WILL DIFFER DEPENDING UPON D.E.M.

NOTE: INSTALLATION MUST CONFORM TO GOOD SHOP PRACTICES, SAE STANDARDS, RVIA STANDARDS, AND OTHER APPLICABLE STANDARDS.

RM KIT/USD:	AP60733	DATE	REVISION
CTRL PKG/IRM:	AP42295		
CTRL PKG/2RM:	AP42297		

SCALE	DATE	SCALE	DATE
1:6	30DCT19		

LDV, INC.	MP71249
-----------	---------

DRAWING NUMBER
MP71249