

AP46006 (BLACK)

- PIN
- 1 BLK(W1400) LEFT FRONT EXTEND
 - 2 BLK(W1500) LEFT FRONT RETRACT
 - 3 BLK(W2400) RIGHT FRONT EXTEND
 - 4 BLK(W2500) RIGHT FRONT RETRACT
 - 5 BLK(W4400) LEFT REAR EXTEND
 - 6 BLK(W4500) LEFT REAR RETRACT
 - 7 BLK(W3400) RIGHT REAR EXTEND
 - 8 BLK(W3500) RIGHT REAR RETRACT
 - 9 BLK(W9300) DUMP
 - 10 BLK(W9301) TRAVEL
 - 11 N/C
 - 12 N/C

AP46006 (GRAY)

- PIN
- 1 BLK(W6800) SWITCHED BATT
 - 2 BLK(W6800) SWITCHED BATT
 - 3 WHT(W6230) GROUND
 - 4 WHT(W6230) GROUND

AP46244 (GRAY)

- PIN
- 1 BLK(W1000) LEFT FRONT WARNING SW.
 - 2 BLK(W2000) RIGHT FRONT WARNING SW.
 - 3 BLK(W3000) RIGHT REAR WARNING SW.
 - 4 BLK(W4000) LEFT REAR WARNING SW.
 - 5 N/C
 - 6 WHT(W6235) GROUND
 - 7 N/C
 - 8 BLK(W2200) RIGHT FRONT PRESSURE SW.
 - 9 BLK(W4200) LEFT REAR PRESSURE SW.
 - 10 BLK(W3200) RIGHT REAR PRESSURE SW.
 - 11 N/C
 - 12 BLK(W1200) LEFT FRONT PRESSURE SW

AP46244 CN1 (BLACK)

- PIN
- 1 N/C
 - 2 N/C
 - 3 RED(W6800) SWITCHED POWER
 - 4 WHT(W6230) GROUND
 - 5 CAN SHIELD
 - 6 RED(W6110) IGNITION
 - 7 GREEN CAN LOW
 - 8 YELLOW CAN HI

AP46244 CN10 (GRAY)

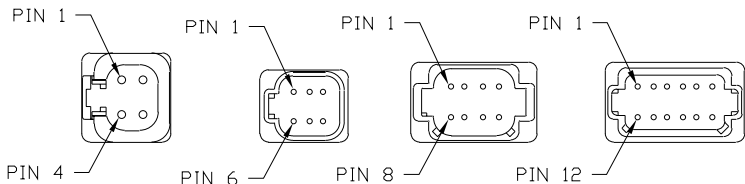
- PIN
- 1 BLK(W7599) SWITCH LIGHT CONTROL
 - 2 RED(W6100) RESET OUT
 - 3 BLK(W7550) RESET IN
 - 4 RED(W6121) WARN LIGHT SUPPLY
 - 5 WHT(W6230) SWITCH LIGHT SUPPLY
 - 6 BLK(W7699) WARN LIGHT/BUZZER CONTROL

AP46244 CN11 (GRAY)

- PIN
- 1 RED(W6110) IGNITION
 - 2 N/C
 - 3 N/C
 - 4 N/C
 - 5 RED(W6120) ACCESSORY
 - 6 RED(W6100) BATTERY
 - 7 WHT(W6230) GROUND
 - 8 N/C
 - 9 N/C
 - 10 N/C
 - 11 BLK(W9000) PARK BRAKE SWITCH
 - 12 RED(W6100) BATTERY

AP46244 CN9 (GREEN)

- PIN
- 1 BLK(W8500) MASTER RELAY CONTROL
 - 2 BLK(W8100) SYSTEM PRESSURE SWITCH
 - 3 N/C
 - 4 BLK(W8600) PUMP RELAY CONTROL
 - 5 N/C
 - 6 BLK(W9901) PUMP MONITOR
 - 7 N/C
 - 8 N/C

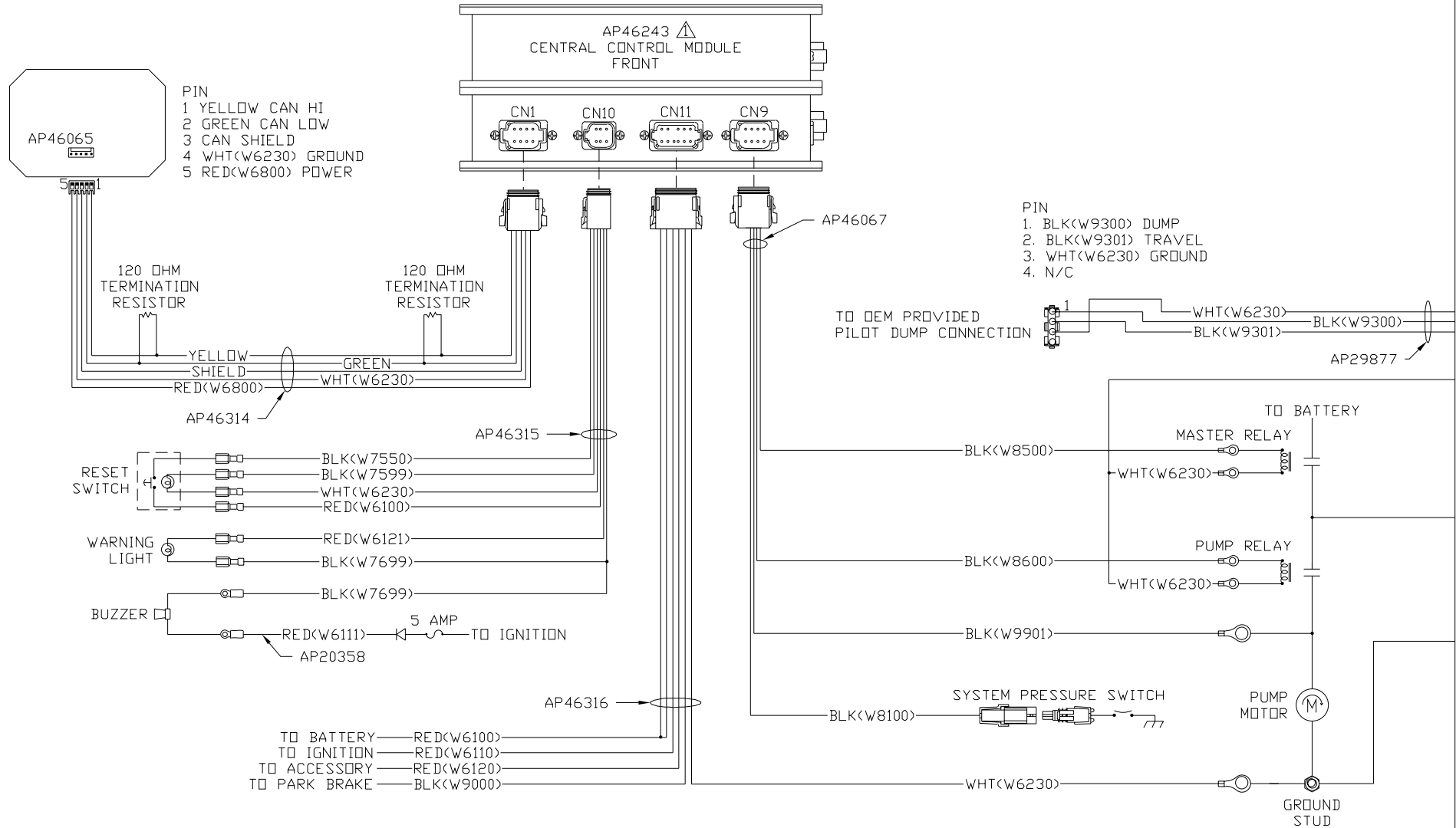


NOTE: DEUTSCH PIN NUMBERS TYPICAL UNLESS OTHERWISE NOTED

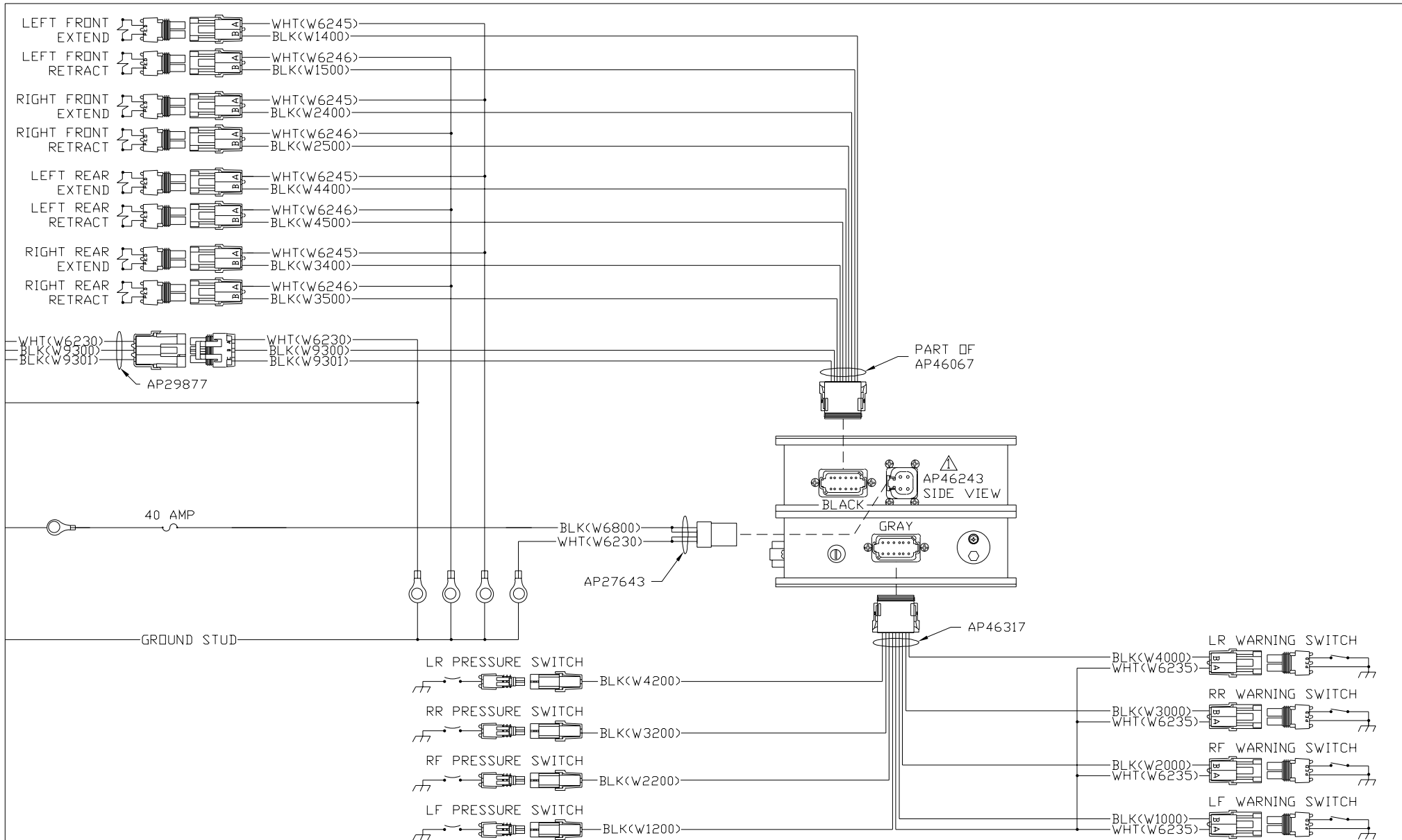
NOTE: WIRE NUMBERS ON THIS SHEET ARE REFERENCED TO HARNESS PLUGS.

NOTE: INSTALLATION MUST CONFORM TO GOOD SHOP PRACTICES, SAE STANDARDS, RVIA STANDARDS, AND OTHER APPLICABLE STANDARDS.

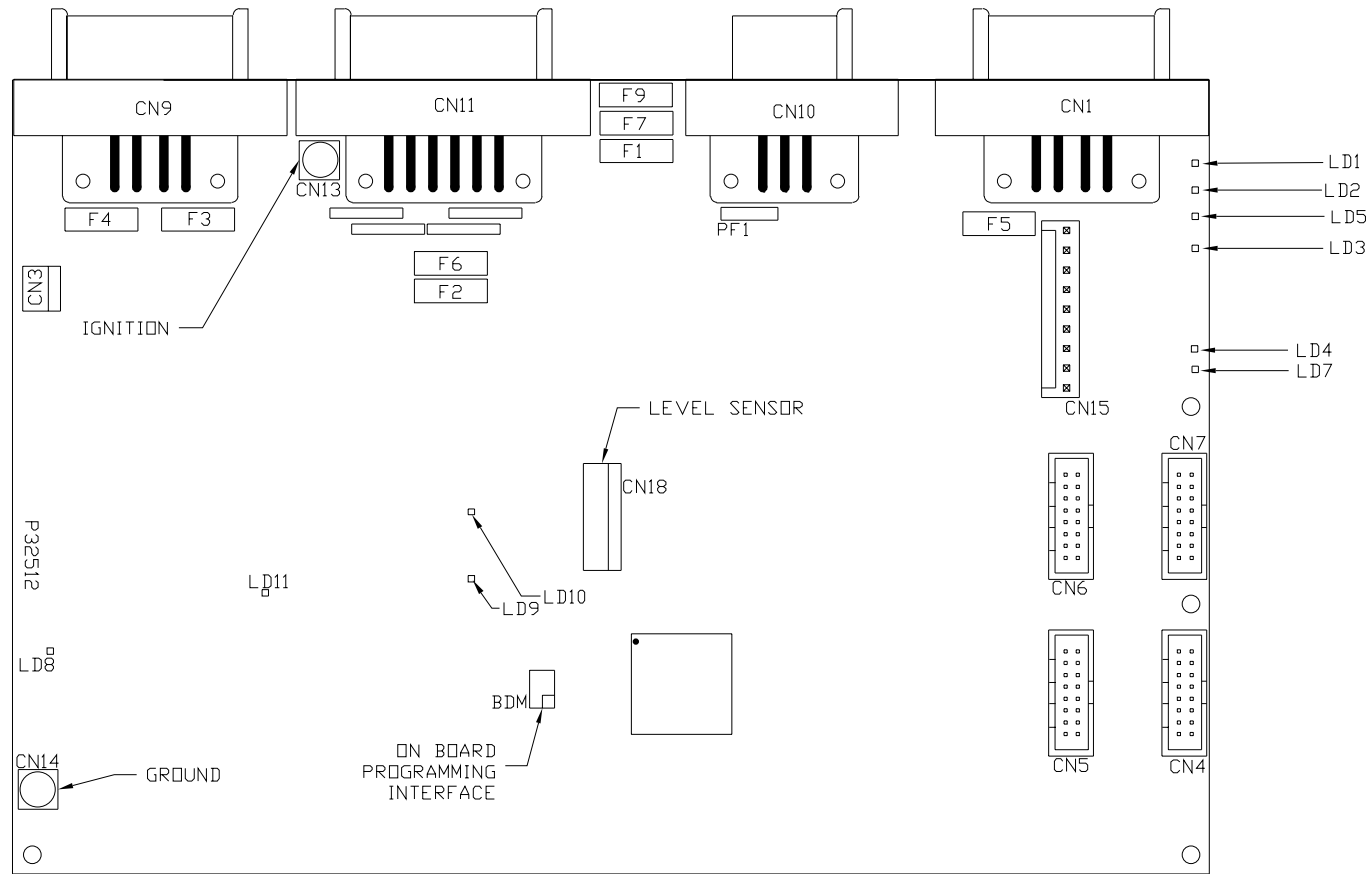
| | | | | | |
|--|---------|-------------------|--|-------------------------------|------------|
| | | | HWH I-80 EXIT 267 SOUTH RT 1 MOSCOW, IOWA 52760 | | |
| | | | SCALE 1:3 | DATE 01MAR10 | DRAWN BY . |
| 2 | 12MAR10 | UPDATED HARNESSES | | | |
| ⚠ | 09MAR10 | WAS AP46118 | | | |
| NO. | DATE | REVISION | SYSTEM SCHEMATIC ELEC | | |
| THE INFORMATION DISCLOSED ON THIS DRAWING IS CONFIDENTIAL AND MUST NOT BE DISCLOSED OR USED IN ANY MANNER WHICH WILL BE DETRIMENTAL TO THE HWH CORPORATION | | | | DRAWING NUMBER MP90436 A/E | |



NOTE: INSTALLATION MUST CONFORM TO GOOD SHOP PRACTICES, SAE STANDARDS, RVIA STANDARDS, AND OTHER APPLICABLE STANDARDS.



NOTE: INSTALLATION MUST CONFORM TO GOOD SHOP PRACTICES, SAE STANDARDS, RVIA STANDARDS, AND OTHER APPLICABLE STANDARDS.

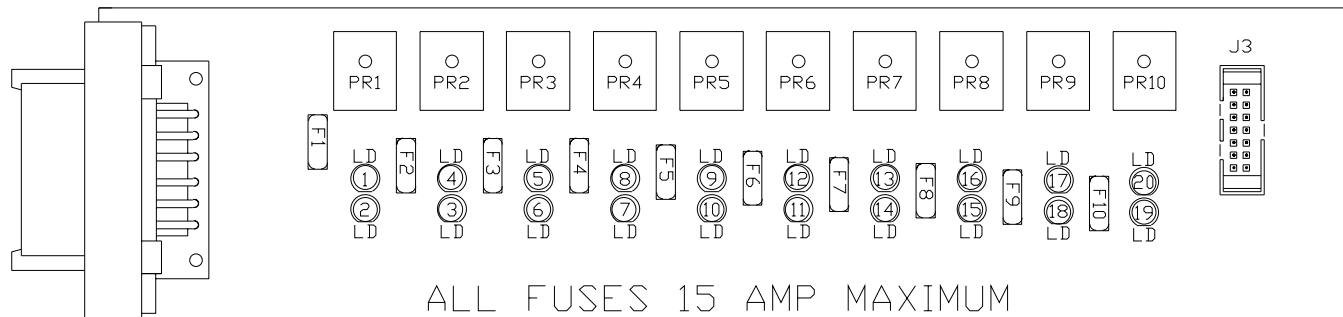


CENTRAL
CONTROL MODULE
LED LAYOUT

| LED # | CONNECTOR | COLOR | DESCRIPTION |
|--------|----------------|-------|--------------|
| LED 1 | CN 9 PIN 1 | RED | MASTER RELAY |
| LED 2 | CN 9 PIN 4 | RED | PUMP RELAY |
| LED 3 | CN 1 PIN 3 | RED | SW 12V |
| LED 4 | CN 11 PIN 12 | RED | BATTERY |
| LED 5 | NOT USED | RED | NOT USED |
| LED 7 | CN 1 PIN 7 & 8 | RED | LINK LIGHT |
| LED 8 | NOT USED | RED | NOT USED |
| LED 9 | NOT USED | RED | NOT USED |
| LED 10 | CN 9 PIN 2 | RED | SYSTEM PSW |
| LED 11 | CN 11 PIN 11 | RED | PARK BRAKE |

| FUSE # | DESCRIPTION |
|--------------|-------------------------|
| PF1 | RESET OUT |
| F7 (3 AMP) | ACCESSORY |
| F1 (7.5 AMP) | IGNITION |
| F2 (15 AMP) | BATTERY |
| F3 (5 AMP) | MASTER RELAY |
| F4 (5 AMP) | PUMP RELAY |
| F5 (15 AMP) | SW. BATT TO CAN MODULES |
| F6 (3 AMP) | BATTERY |
| F9 (3 AMP) | POWER TO CN100 |

NOTE: INSTALLATION MUST CONFORM TO GOOD SHOP PRACTICES, SAE STANDARDS, RVIA STANDARDS, AND OTHER APPLICABLE STANDARDS.

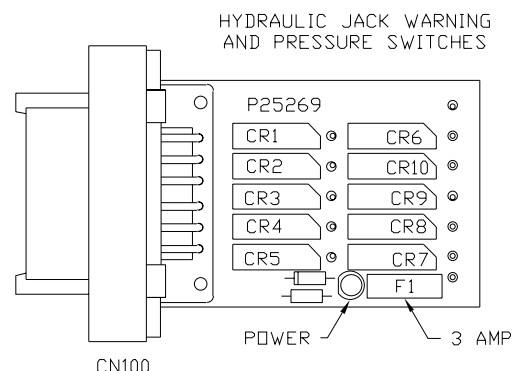


ALL FUSES 15 AMP MAXIMUM

OUTPUTS
LED LAYOUT

| LED # | COLOR | FUSE # | OUTPUT | RELAY # | DESCRIPTION |
|-------|--------|--------|--------|---------|-------------------------------|
| LED1 | YELLOW | --- | --- | PR1 | LEFT FRONT EXTEND (COIL) |
| LED2 | RED | FUSE 1 | PIN 1 | PR1 | LEFT FRONT EXTEND (CONTACT) |
| LED3 | RED | FUSE 2 | PIN 2 | PR2 | LEFT FRONT RETRACT (CONTACT) |
| LED4 | YELLOW | --- | --- | PR2 | LEFT FRONT RETRACT (COIL) |
| LED5 | YELLOW | --- | --- | PR3 | RIGHT FRONT EXTEND (COIL) |
| LED6 | RED | FUSE 3 | PIN 3 | PR3 | RIGHT FRONT EXTEND (CONTACT) |
| LED7 | RED | FUSE 4 | PIN 4 | PR4 | RIGHT FRONT RETRACT (CONTACT) |
| LED8 | YELLOW | --- | --- | PR4 | RIGHT FRONT RETRACT (COIL) |
| LED9 | YELLOW | --- | --- | PR5 | LEFT REAR EXTEND (COIL) |
| LED10 | RED | FUSE 5 | PIN 5 | PR5 | LEFT REAR EXTEND (CONTACT) |

| LED # | COLOR | FUSE # | OUTPUT | RELAY # | DESCRIPTION |
|-------|--------|---------|--------|---------|------------------------------|
| LED11 | RED | FUSE 6 | PIN 6 | PR6 | LEFT REAR RETRACT (CONTACT) |
| LED12 | YELLOW | --- | --- | PR6 | LEFT REAR RETRACT (COIL) |
| LED13 | YELLOW | --- | --- | PR7 | RIGHT REAR EXTEND (COIL) |
| LED14 | RED | FUSE 7 | PIN 7 | PR7 | RIGHT REAR EXTEND (CONTACT) |
| LED15 | RED | FUSE 8 | PIN 8 | PR8 | RIGHT REAR RETRACT (CONTACT) |
| LED16 | YELLOW | --- | --- | PR8 | RIGHT REAR RETRACT (COIL) |
| LED17 | YELLOW | --- | --- | PR9 | DUMP (COIL) |
| LED18 | RED | FUSE 9 | PIN 9 | PR9 | DUMP (CONTACT) |
| LED19 | RED | FUSE 10 | PIN 10 | PR10 | TRAVEL (CONTACT) |
| LED20 | YELLOW | --- | --- | PR10 | TRAVEL (COIL) |



| CONNECTOR | REED SWITCH | DESCRIPTION |
|---------------|-------------|------------------------|
| CN 100 PIN 1 | CR1 | LEFT FRONT WARN. SW. |
| CN 100 PIN 2 | CR2 | RIGHT FRONT WARN. SW. |
| CN 100 PIN 3 | CR3 | RIGHT REAR WARN. SW. |
| CN 100 PIN 4 | CR4 | LEFT REAR WARN. SW. |
| CN 100 PIN 5 | CR5 | NOT USED |
| CN 100 PIN 6 | --- | GROUND |
| CN 100 PIN 7 | --- | NOT USED |
| CN 100 PIN 8 | CR7 | RIGHT FRONT PRESS. SW. |
| CN 100 PIN 9 | CR8 | LEFT REAR PRESS. SW. |
| CN 100 PIN 10 | CR9 | RIGHT REAR PRESS. SW. |
| CN 100 PIN 11 | CR10 | NOT USED |
| CN 100 PIN 12 | CR6 | LEFT FRONT PRESS. SW. |

NOTE: INSTALLATION MUST CONFORM TO GOOD SHOP PRACTICES, SAE STANDARDS, RVIA STANDARDS, AND OTHER APPLICABLE STANDARDS.

MP90436 E
01MAR10