

- AP46006 (BLACK)
PIN
- 1 BLK(W5555) VALVE #5
 - 2 BLK(W4444) VALVE #4
 - 3 BLK(W6666) VALVE #6
 - 4 N/C
 - 5 N/C
 - 6 N/C
 - 7 N/C
 - 8 N/C
 - 9 N/C
 - 10 N/C
 - 11 N/C
 - 12 N/C

- AP46006 (GRAY)
PIN
- 1 BLK(W6800) 12V SWITCHED BATT
 - 2 BLK(W6800) 12V SWITCHED BATT
 - 3 WHT(W6230) GROUND
 - 4 WHT(W6230) GROUND

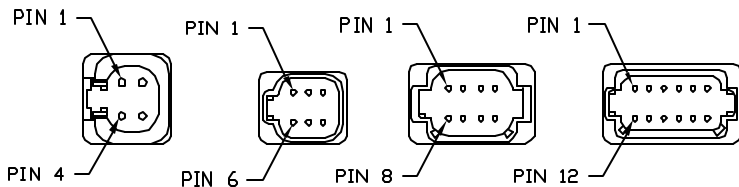
- AP47123 (BROWN)
PIN
- 1 N/C
 - 2 BLUE - SET MODE
 - 3 N/C
 - 4 N/C
 - 5 N/C
 - 6 WHITE - GROUND
 - 7 RED - POWER
 - 8 N/C
 - 9 YELLOW - LEFT SIDE SENSE
 - 10 BLACK - FRONT SENSE
 - 11 GREEN - RIGHT SIDE SENSE
 - 12 ORANGE - REAR SENSE

- AP47123 CN1 (BLACK)
PIN
- 1 N/C
 - 2 N/C
 - 3 RED(W6800) 12V SWITCHED POWER
 - 4 WHT(W6230) GROUND
 - 5 CAN SHIELD
 - 6 N/C
 - 7 GREEN CAN LOW
 - 8 YELLOW CAN HI

- AP47123 CN10 (GRAY)
PIN
- 1 N/C
 - 2 RED - POWER
 - 3 N/C
 - 4 N/C
 - 5 WHITE - GROUND
 - 6 N/C

- AP47123 CN11 (GRAY)
PIN
- 1 RED(W6110) 12V IGNITION
 - 2 N/C
 - 3 N/C
 - 4 N/C
 - 5 RED(W6120) 12V ACCESSORY
 - 6 RED(W6100) 12V BATTERY
 - 7 WHT(W6230) GROUND
 - 8 N/C
 - 9 N/C
 - 10 N/C
 - 11 BLK(W9000) PARK BRAKE SWITCH
 - 12 RED(W6100) 12V BATTERY

- AP47123 CN9 (GREEN)
PIN
- 1 BLK(W8500) MASTER RELAY CONTROL
 - 2 BLK(W8100) SYSTEM PRESSURE SWITCH
 - 3 N/C
 - 4 BLK(W8600) PUMP RELAY CONTROL
 - 5 N/C
 - 6 BLK(W9901) PUMP MONITOR
 - 7 N/C
 - 8 N/C



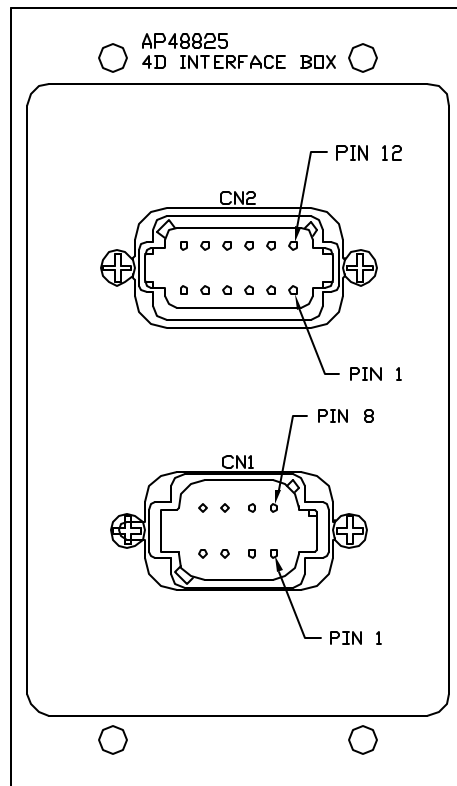
NOTE: DEUTSCH PIN NUMBERS TYPICAL UNLESS OTHERWISE NOTED
NOTE: WIRE NUMBERS ON THIS SHEET ARE REFERENCED TO HARNESS PLUGS.

NOTE: INSTALLATION MUST CONFORM TO GOOD SHOP PRACTICES, SAE STANDARDS, RVIA STANDARDS, AND OTHER APPLICABLE STANDARDS.

5	11DEC12	CH'D 'LINK LIGHT', AD'D AP51270
▲	18AUG11	WAS "AUTOACTIVATE"
3	13JUL11	RSV'D MODULES, AP48554, GND
2	17JUN11	CORRECTED PUMP RUN SW.
1	15JUN11	ADDED AP48825 AND AP48891
NO.	DATE	REVISION

THE INFORMATION DISCLOSED ON THIS DRAWING IS CONFIDENTIAL AND MUST NOT BE DISCLOSED OR USED IN ANY MANNER WHICH WILL BE DETRIMENTAL TO THE HWH CORPORATION

HWH		I-80 EXIT 267 SOUTH	
		RT 1 MOSCOW, IOWA 52760	
SCALE 1:3	DATE 02MAY11	DRAWN BY .	
SYSTEM SCHEMATIC ELEC			
			DRAWING NUMBER MP90563 A/M



CN2
PIN

- 1 BLK(AUTOLEV) AUTO LEVEL
- 2 BLK(STORE) STORE
- 3 BLK(STOP) STOP
- 4 N/C
- 5 RED(+12VOUT) +12V OUT
- 6 WHITE GROUND
- 7 BLK(AUTOACTIVE) AUTO ACTIVE Δ
- 8 BLK(LIP) LEVEL IN PROCESS
- 9 BLK(JACKSDN) JACKS DOWN
- 10 BLK(STOREINPROC) STORE IN PROCESS
- 11 BLK(NOTINPARK) NOT IN PARK
- 12 BLK(EXCESS) EXCESS SLOPE

CN1
PIN

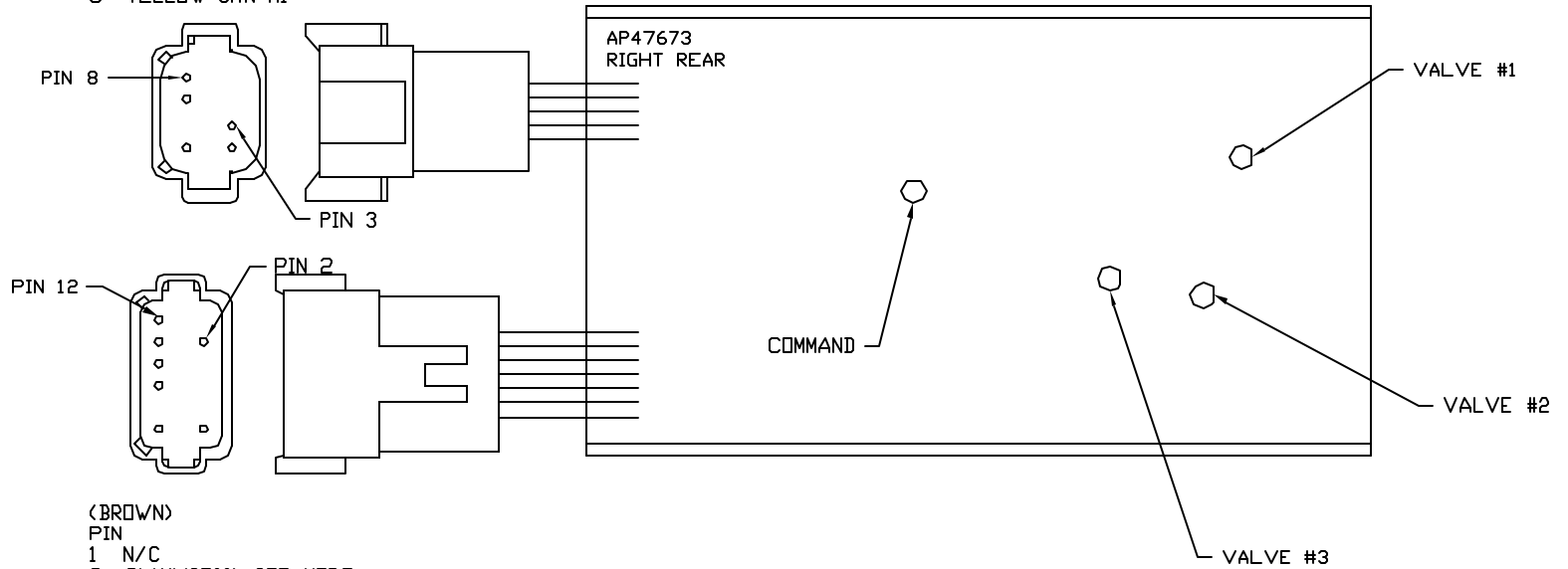
- 1 N/C
- 2 N/C
- 3 RED(W6800) 12V SWITCHED POWER
- 4 WHT(W6230) GROUND
- 5 CAN SHIELD
- 6 N/C
- 7 GREEN CAN LOW
- 8 YELLOW CAN HI

NOTE: WIRE NUMBERS ON THIS SHEET ARE REFERENCED TO HARNESS PLUGS.

NOTE: INSTALLATION MUST CONFORM TO GOOD SHOP PRACTICES, SAE STANDARDS, RVIA STANDARDS, AND OTHER APPLICABLE STANDARDS.

MP90563 B
18AUG11

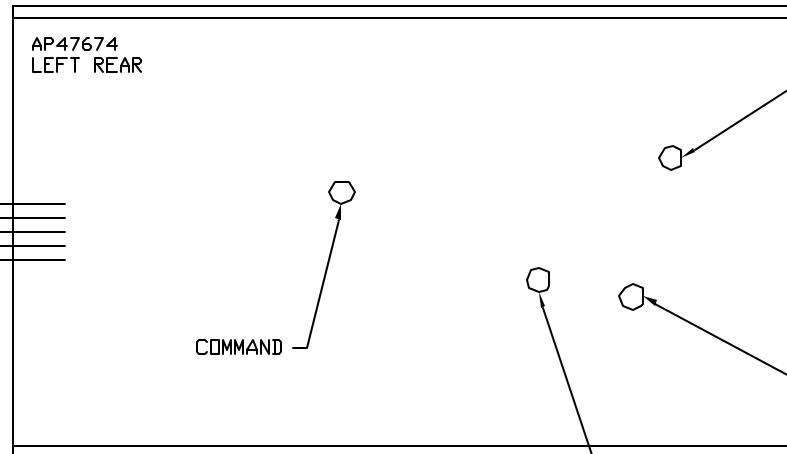
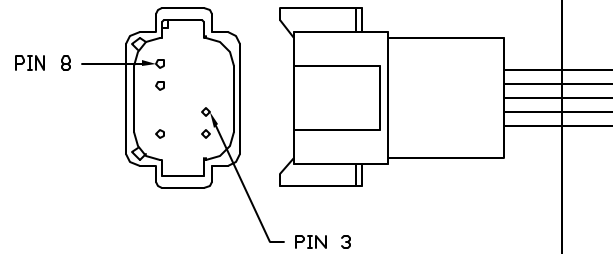
- (BLACK)
PIN
- 1 N/C
 - 2 N/C
 - 3 RED(W6800) 12V SWITCHED POWER
 - 4 WHT(W6230) GROUND
 - 5 CAN SHIELD
 - 6 N/C
 - 7 GREEN CAN LOW
 - 8 YELLOW CAN HI



- (BROWN)
PIN
- 1 N/C
 - 2 BLK(W0500) SET MODE
 - 3 N/C
 - 4 N/C
 - 5 N/C
 - 6 WHT(W6230) GROUND
 - 7 RED(W6800) 12V POWER
 - 8 N/C
 - 9 BLK(W0100) LEFT SIDE SENSE
 - 10 BLK(W0200) FRONT SENSE
 - 11 BLK(W0300) RIGHT SIDE SENSE
 - 12 BLK(W0400) REAR SENSE

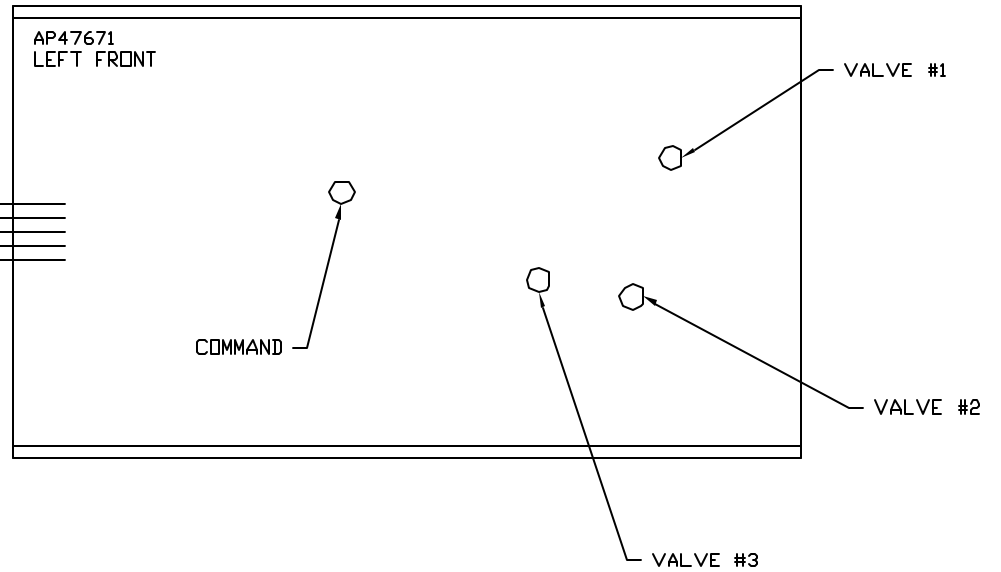
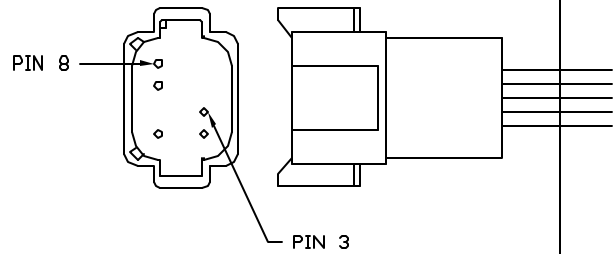
NOTE: INSTALLATION MUST CONFORM TO GOOD SHOP PRACTICES, SAE STANDARDS, RVIA STANDARDS, AND OTHER APPLICABLE STANDARDS.

- <BLACK>
 PIN
 1 N/C
 2 N/C
 3 RED(W6800) 12V SWITCHED POWER
 4 WHT(W6230) GROUND
 5 CAN SHIELD
 6 N/C
 7 GREEN CAN LOW
 8 YELLOW CAN HI



NOTE: INSTALLATION MUST CONFORM TO GOOD SHOP PRACTICES, SAE STANDARDS, RVIA STANDARDS, AND OTHER APPLICABLE STANDARDS.

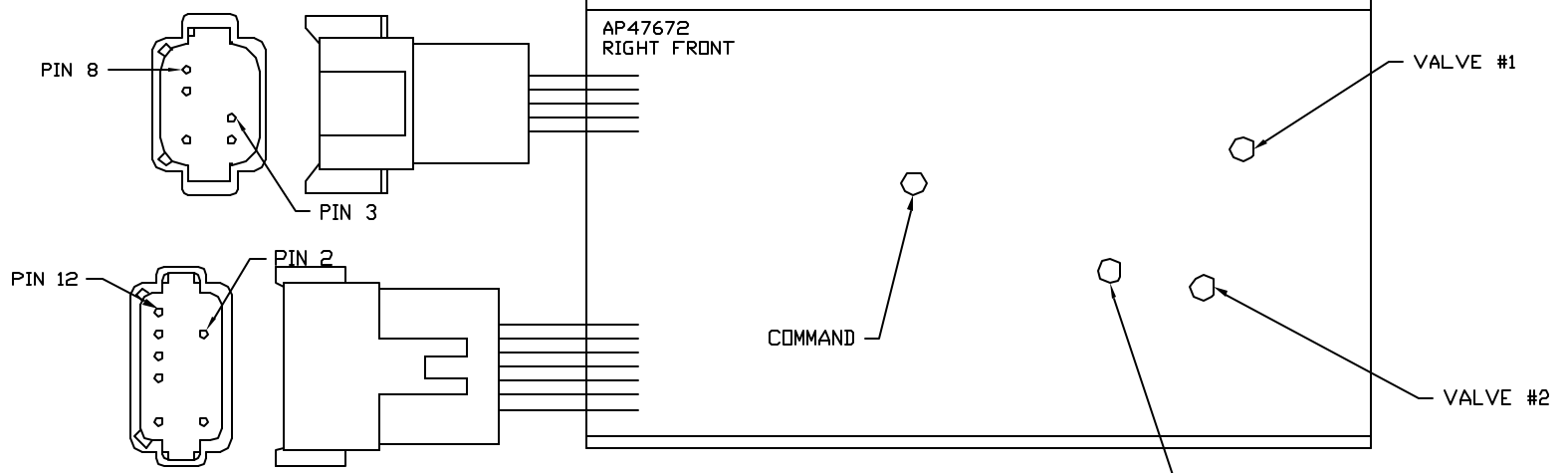
- <BLACK>
 PIN
 1 N/C
 2 N/C
 3 RED(W6800) 12V SWITCHED POWER
 4 WHT(W6230) GROUND
 5 CAN SHIELD
 6 N/C
 7 GREEN CAN LOW
 8 YELLOW CAN HI



NOTE: INSTALLATION MUST CONFORM TO GOOD SHOP PRACTICES, SAE STANDARDS, RVIA STANDARDS, AND OTHER APPLICABLE STANDARDS.

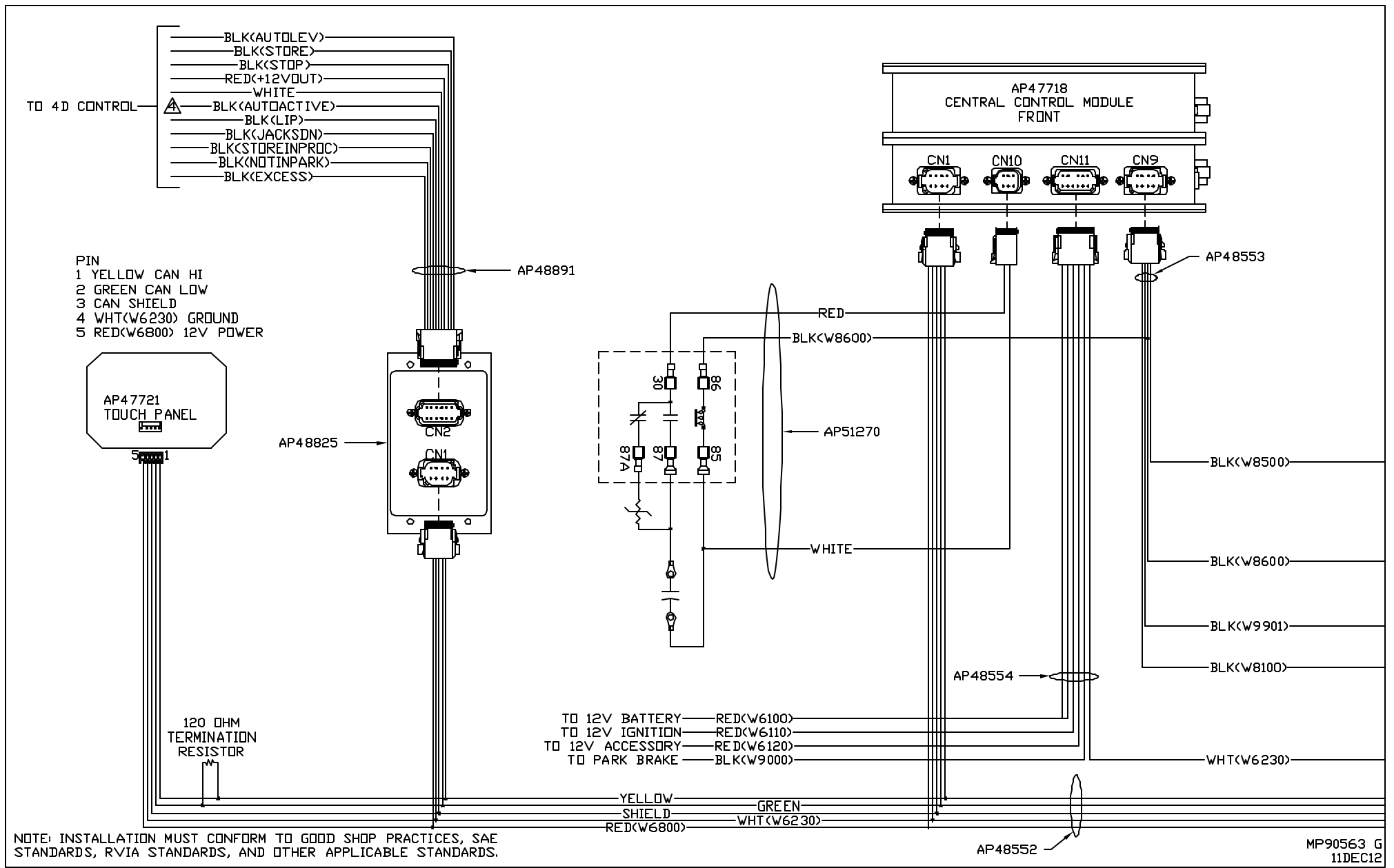
MP90563 E
 11DEC12

(BLACK)
 PIN
 1 N/C
 2 N/C
 3 RED(W6800) 12V SWITCHED POWER
 4 WHT(W6230) GROUND
 5 CAN SHIELD
 6 N/C
 7 GREEN CAN LOW
 8 YELLOW CAN HI

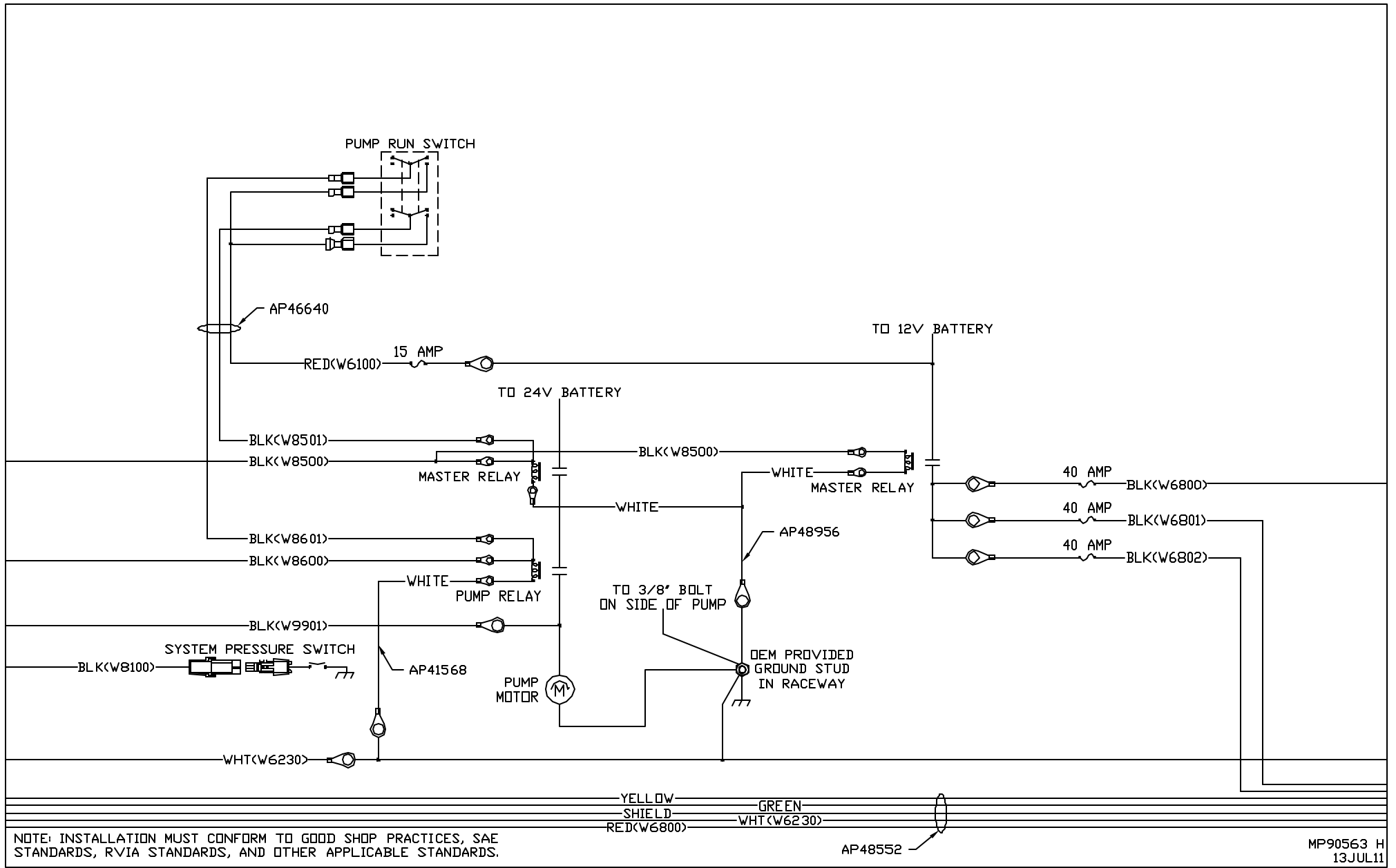


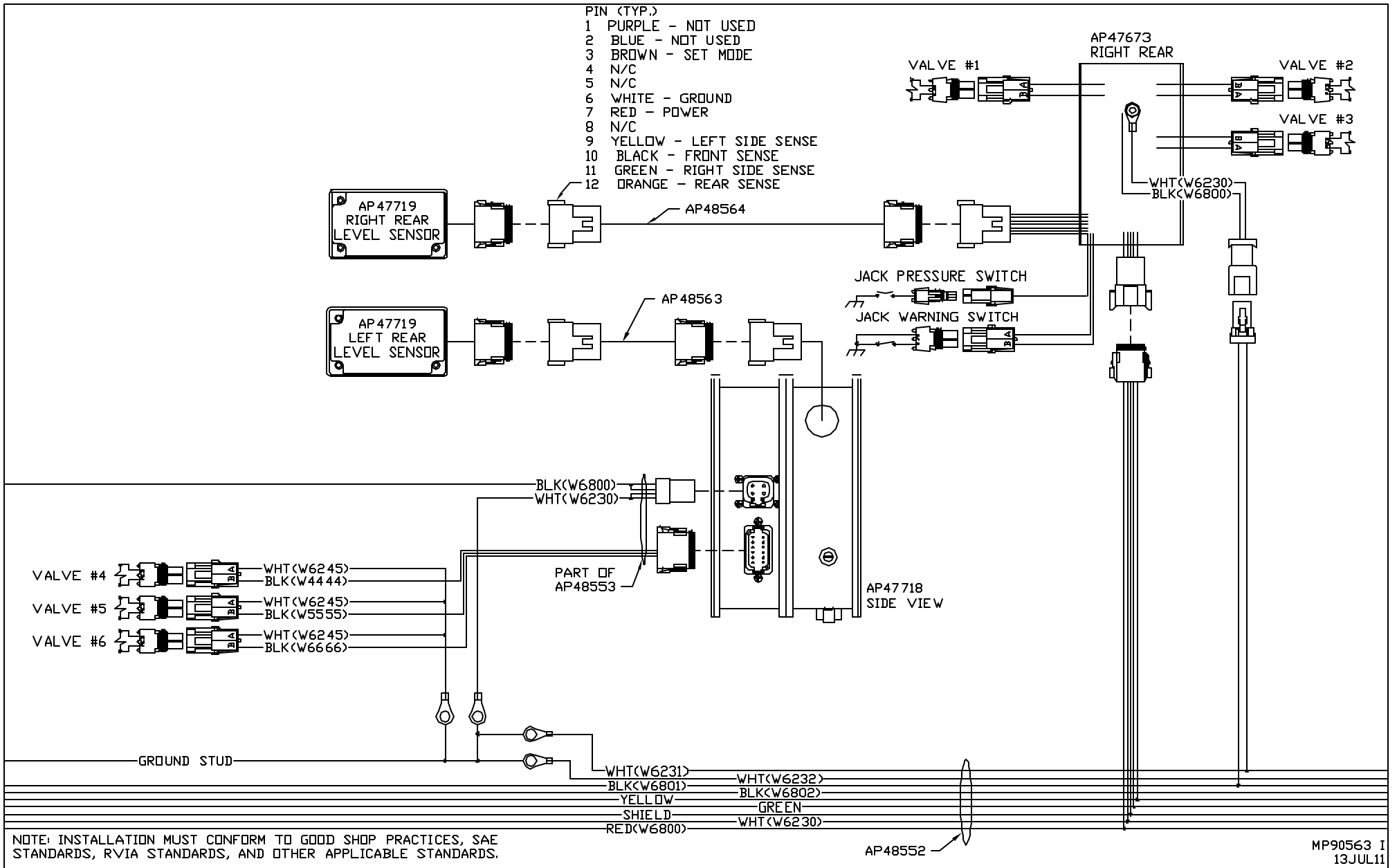
(BROWN)
 PIN
 1 N/C
 2 BLK(W0500) SET MODE
 3 N/C
 4 N/C
 5 N/C
 6 WHT(W6230) GROUND
 7 RED(W6800) 12V POWER
 8 N/C
 9 BLK(W0100) LEFT SIDE SENSE
 10 BLK(W0200) FRONT SENSE
 11 BLK(W0300) RIGHT SIDE SENSE
 12 BLK(W0400) REAR SENSE

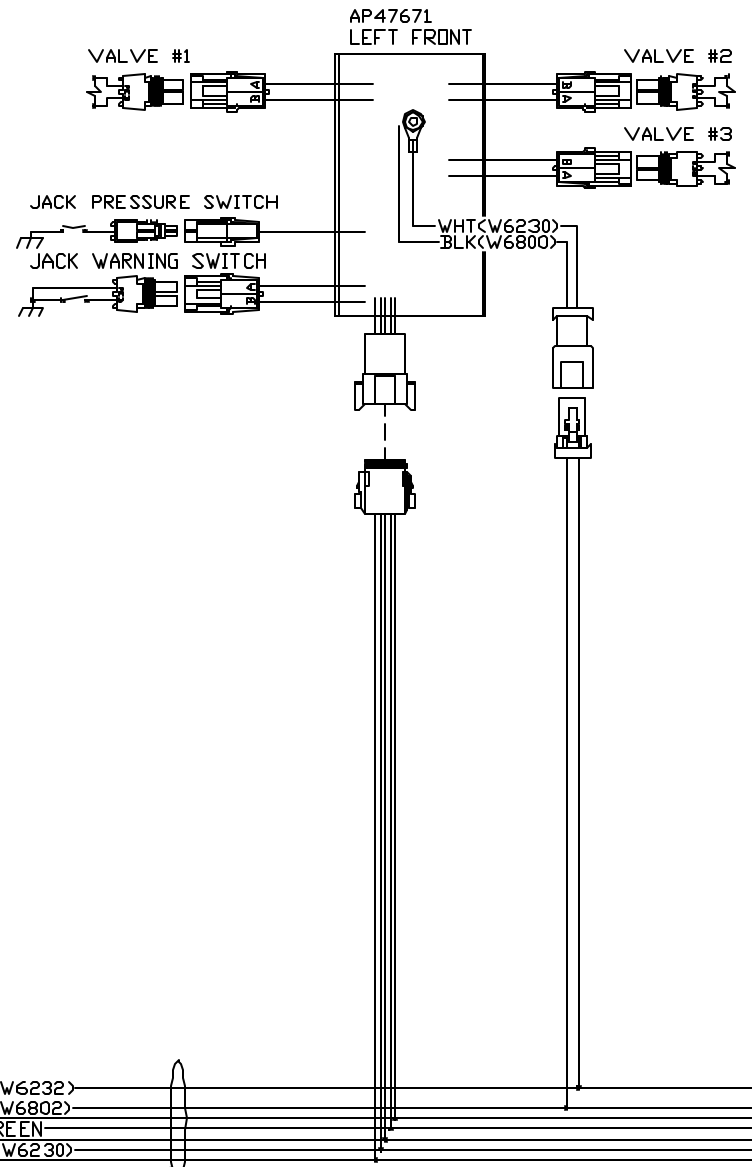
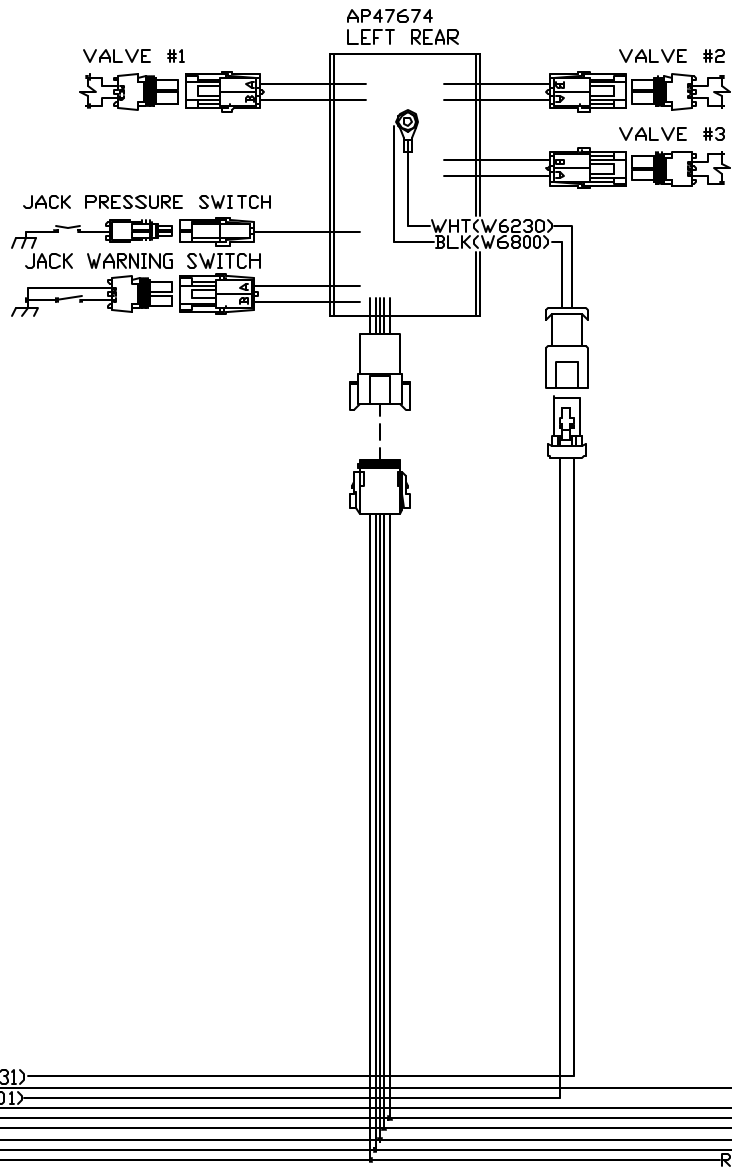
NOTE: INSTALLATION MUST CONFORM TO GOOD SHOP PRACTICES, SAE STANDARDS, RVIA STANDARDS, AND OTHER APPLICABLE STANDARDS.



NOTE: INSTALLATION MUST CONFORM TO GOOD SHOP PRACTICES, SAE STANDARDS, RVIA STANDARDS, AND OTHER APPLICABLE STANDARDS.



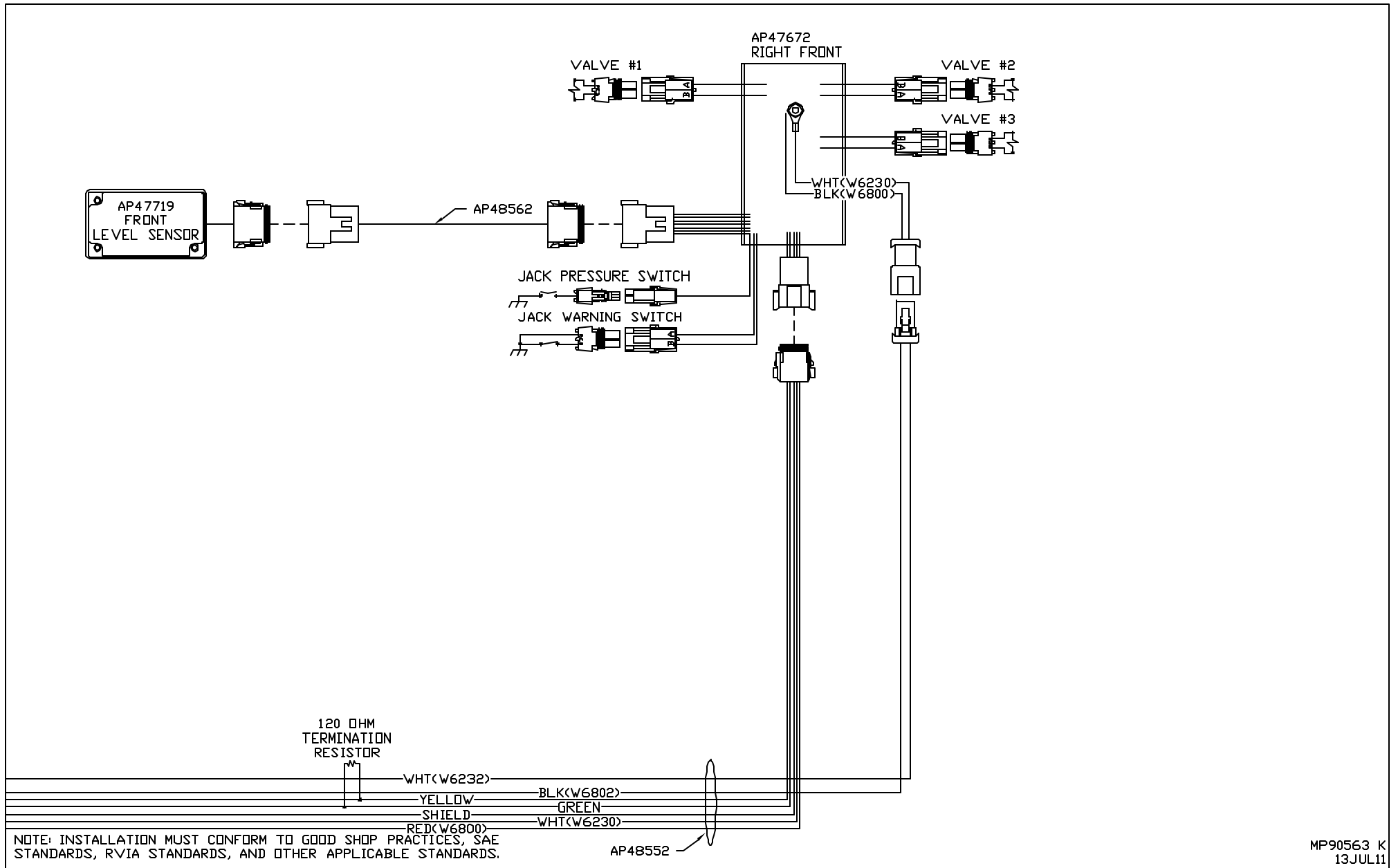


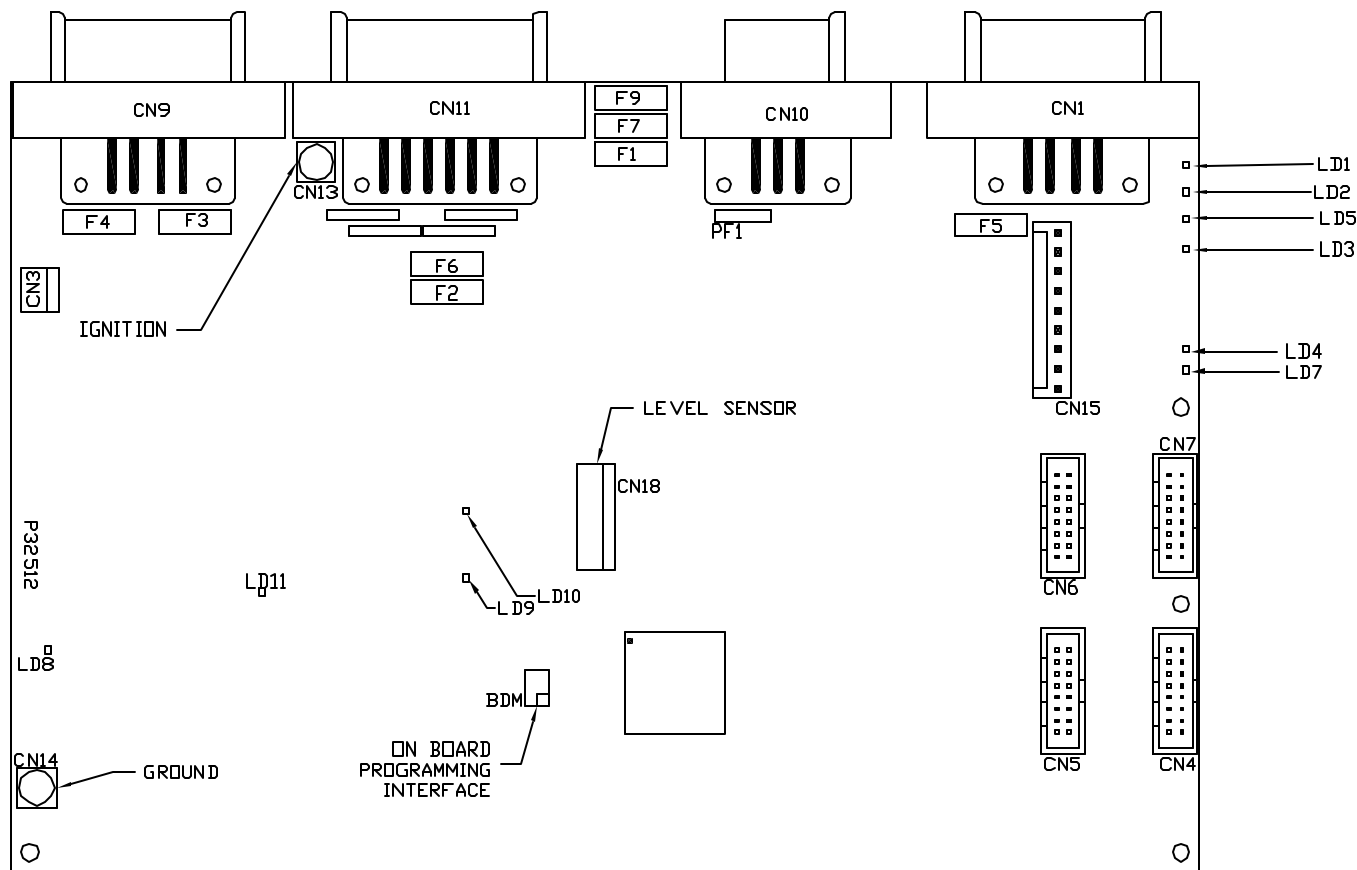


NOTE: INSTALLATION MUST CONFORM TO GOOD SHOP PRACTICES, SAE STANDARDS, RVIA STANDARDS, AND OTHER APPLICABLE STANDARDS.

AP48552

MP90563 J
13JUL11



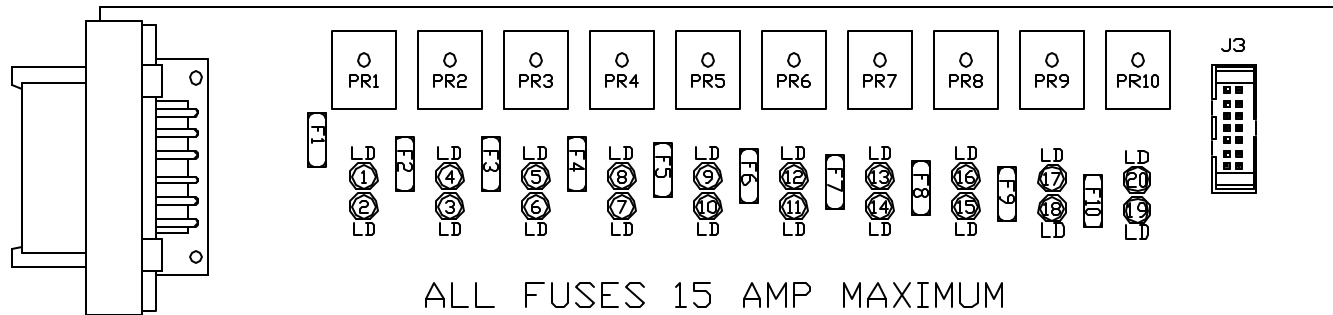


CENTRAL
CONTROL MODULE
LED LAYOUT

LED #	CONNECTOR	COLOR	DESCRIPTION
LED 1	CN 9 PIN 1	RED	MASTER RELAY
LED 2	CN 9 PIN 4	RED	PUMP RELAY
LED 3	CN 1 PIN 3	RED	SWITCHED 12V
LED 4	CN 11 PIN 12	RED	12V BATTERY
LED 5	NOT USED	RED	NOT USED
LED 7	NOT USED	RED	NOT USED
LED 8	NOT USED	RED	NOT USED
LED 9	NOT USED	RED	NOT USED
LED 10	CN 9 PIN 2	RED	SYSTEM PSW
LED 11	CN 11 PIN 11	RED	PARK BRAKE

FUSE #	DESCRIPTION
PF1	RESET OUT
F7 (3 AMP)	12V ACCESSORY
F1 (7.5 AMP)	12V IGNITION
F2 (15 AMP)	12V BATTERY
F3 (5 AMP)	MASTER RELAY
F4 (5 AMP)	PUMP RELAY
F5 (15 AMP)	12V SW. BATT TO CAN MODULES
F6 (3 AMP)	12V BATTERY
F9 (3 AMP)	NOT USED

NOTE: INSTALLATION MUST CONFORM TO GOOD SHOP PRACTICES, SAE STANDARDS, RVIA STANDARDS, AND OTHER APPLICABLE STANDARDS.



OUTPUTS
LED LAYOUT

LED #	COLOR	FUSE #	OUTPUT	RELAY #	DESCRIPTION
LED1	YELLOW	---	---	PR1	VALVE #5 (COIL)
LED2	RED	FUSE 1	PIN 1	PR1	VALVE #5 (CONTACT)
LED3	RED	FUSE 2	PIN 2	PR2	VALVE #4 (CONTACT)
LED4	YELLOW	---	---	PR2	VALVE #4 (COIL)
LED5	YELLOW	---	---	PR3	VALVE #6 (COIL)
LED6	RED	FUSE 3	PIN 3	PR3	VALVE #6 (CONTACT)
LED7	RED	FUSE 4	PIN 4	PR4	NOT USED
LED8	YELLOW	---	---	PR4	NOT USED
LED9	YELLOW	---	---	PR5	NOT USED
LED10	RED	FUSE 5	PIN 5	PR5	NOT USED
LED11	RED	FUSE 6	PIN 6	PR6	NOT USED
LED12	YELLOW	---	---	PR6	NOT USED
LED13	YELLOW	---	---	PR7	NOT USED
LED14	RED	FUSE 7	PIN 7	PR7	NOT USED
LED15	RED	FUSE 8	PIN 8	PR8	NOT USED
LED16	YELLOW	---	---	PR8	NOT USED
LED17	YELLOW	---	---	PR9	NOT USED
LED18	RED	FUSE 9	PIN 9	PR9	NOT USED
LED19	RED	FUSE 10	PIN 10	PR10	NOT USED
LED20	YELLOW	---	---	PR10	NOT USED

NOTE: INSTALLATION MUST CONFORM TO GOOD SHOP PRACTICES, SAE STANDARDS, RVIA STANDARDS, AND OTHER APPLICABLE STANDARDS.

MP90563 M
15JUN11