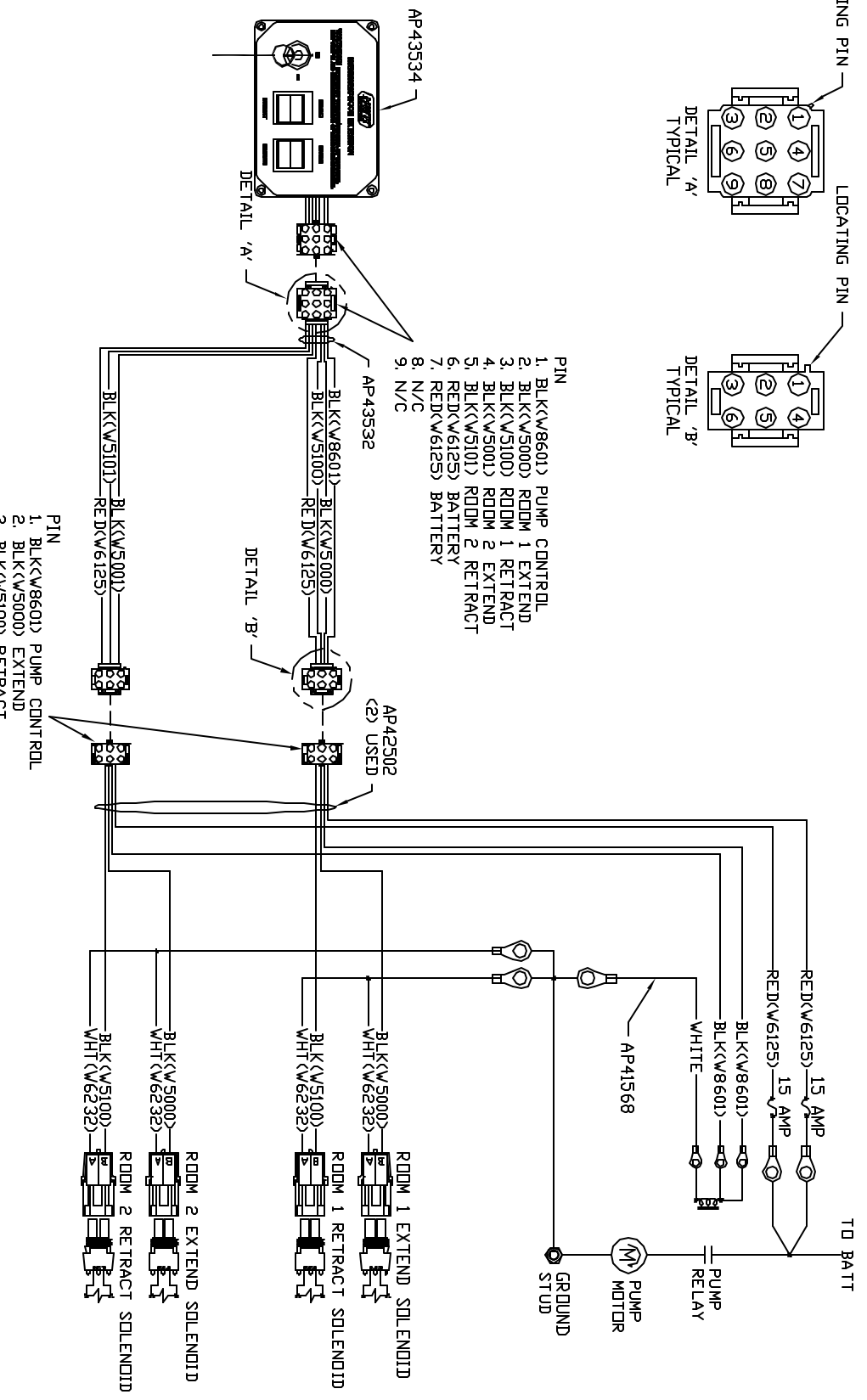


- PIN
1. BLK(W8601) PUMP CONTROL
  2. BLK(W5000) ROOM 1 EXTEND
  3. BLK(W5100) ROOM 1 RETRACT
  4. BLK(W5001) ROOM 2 EXTEND
  5. BLK(W5101) ROOM 2 RETRACT
  6. RED(W6125) BATTERY
  7. RED(W6125) BATTERY
  8. N/C
  9. N/C

- PIN
1. BLK(W8601) PUMP CONTROL
  2. BLK(W5000) EXTEND
  3. BLK(W5100) RETRACT
  4. N/C
  5. N/C
  6. RED(W6125) BATTERY



NOTE: INSTALLATION MUST CONFORM TO GOOD SHOP PRACTICES, SAE STANDARDS, RVIA STANDARDS, AND OTHER APPLICABLE STANDARDS.

NO.	DATE	REVISION

HWH	SCALE 1:3	DATE 07MAR11	DESIGNER H.W.
1-80 EXT 267 SOUTH	RT 1 MOSCOW, IOWA 52760		
<b>SYSTEM SCHEMATIC ELEC</b>			
DRAWING NUMBER			MP906130