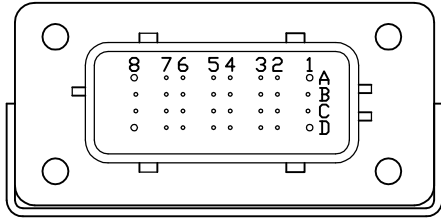
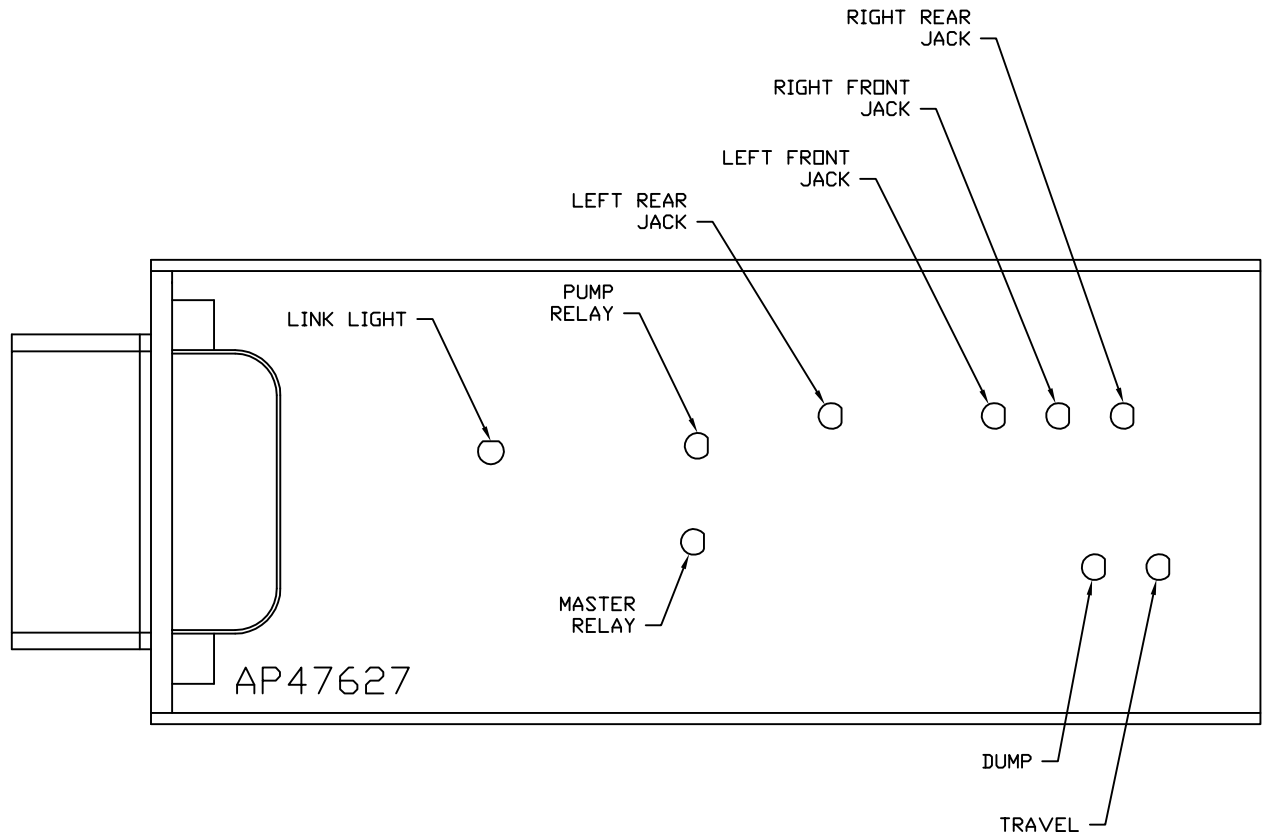


FRONT VIEW - AP47627



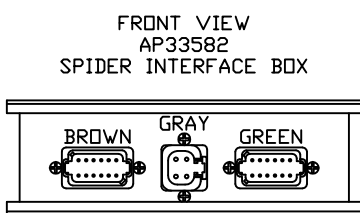
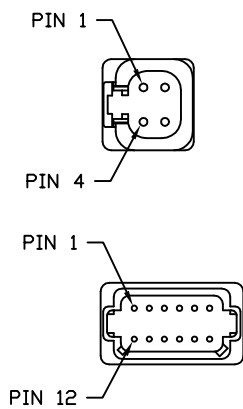
- PIN
- A1. BLK(W8601) - PUMP REQUEST
 - A2. YELLOW - CAN HIGH
 - A3. N/C
 - A4. N/C
 - A5. BLK(W2000) - RIGHT FRONT JACK WARNING SWITCH
 - A6. BLK(W2200) - RIGHT FRONT JACK PRESSURE SWITCH
 - A7. BLK(W3200) - RIGHT REAR JACK PRESSURE SWITCH
 - A8. BLK(W8101) - 50 LB. PRESSURE SWITCH
 - B1. RED(W6800) - TOUCH PANEL POWER
 - B2. GREEN - CAN LOW
 - B3. WHT(W6230) - TOUCH PANEL GROUND
 - B4. N/C
 - B5. BLK(W3000) - RIGHT REAR JACK WARNING SWITCH
 - B6. BLK(W4200) - LEFT REAR JACK PRESSURE SWITCH
 - B7. N/C
 - B8. BLK(W8100) - 3000 LB. PRESSURE SWITCH
 - C1. RED(W6121) - LEVEL SENSOR POWER
 - C2. CAN SHIELD
 - C3. WHT(W6231) - LEVEL SENSOR GROUND
 - C4. BLK(W0400) - REAR SENSE
 - C5. BLK(W4000) - LEFT REAR JACK WARNING SWITCH
 - C6. N/C
 - C7. N/C
 - C8. BLK(W0300) - RIGHT SIDE SENSE
 - D1. RED(W6120) - ACCESSORY
 - D2. WHT(W6235) - JACK WARNING SWITCH GROUND
 - D3. N/C
 - D4. BLK(W1000) - LEFT FRONT JACK WARNING SWITCH
 - D5. BLK(W1200) - LEFT FRONT JACK PRESSURE SWITCH
 - D6. BLK(W0100) - LEFT SIDE SENSE
 - D7. BLK(W0200) - FRONT SENSE
 - D8. BLK(W9000) - PARK BRAKE

NOTE: WIRE NUMBERS ON THIS SHEET ARE REFERENCED TO HARNESS PLUGS.



NOTE: INSTALLATION MUST CONFORM TO GOOD SHOP PRACTICES, SAE STANDARDS, RVIA STANDARDS, AND OTHER APPLICABLE STANDARDS.

			HWH			I-80 EXIT 267 SOUTH RT 1 MOSCOW, IOWA 52760		
			SCALE 1:3	DATE 15APR13	DRAWN BY .			
			SYSTEM SCHEMATIC ELEC					
NO.	DATE	REVISION						
THE INFORMATION DISCLOSED ON THIS DRAWING IS CONFIDENTIAL AND MUST NOT BE DISCLOSED OR USED IN ANY MANNER WHICH WILL BE DETRIMENTAL TO THE HWH CORPORATION			DRAWING NUMBER MP90857 A/E					



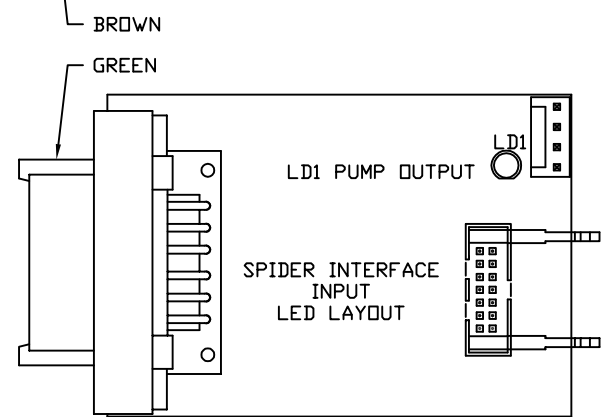
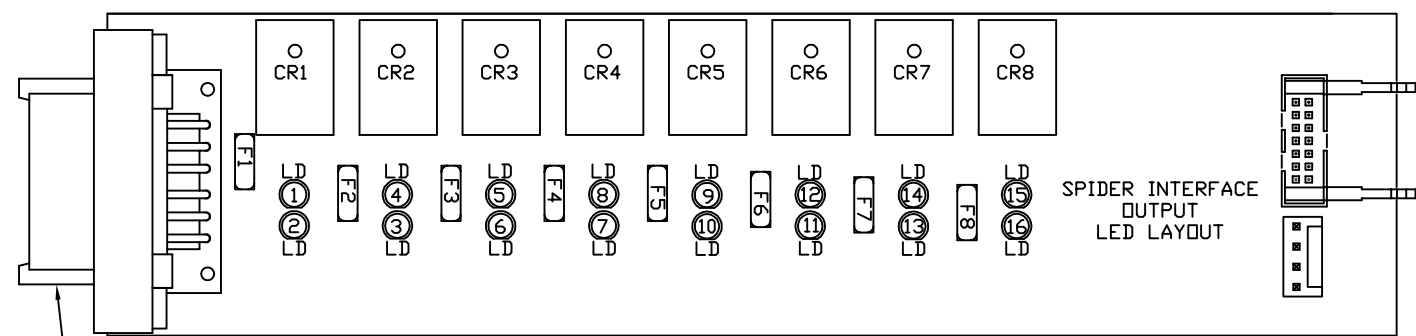
- BROWN PIN**
- 1) BLK(W5050) CYL. 1 EXTEND
 - 2) BLK(W5150) CYL. 1 RETRACT
 - 3) BLK(W5051) CYL. 2 EXTEND
 - 4) BLK(W5151) CYL. 2 RETRACT
 - 5) BLK(W5052) CYL. 3 EXTEND
 - 6) BLK(W5152) CYL. 3 RETRACT
 - 7) N/C
 - 8) N/C
 - 9) BLK(W5053) CYL. 4 EXTEND
 - 10) BLK(W5153) CYL. 4 RETRACT
 - 11) BLK(W8601) PUMP
 - 12) RED(W6100) BATT.

- GRAY PIN**
1. BLK(W6810) SW. BATT
 2. BLK(W6810) SW. BATT
 3. WHT(W6230) GROUND
 4. WHT(W6230) GROUND

- GREEN PIN**
1. BLK(W7502) CYL. 1 RETRACT
 2. BLK(W7505) CYL. 2 RETRACT
 3. BLK(W7508) CYL. 3 RETRACT
 4. BLK(W7511) CYL. 4 RETRACT
 5. BLK(W7513) NOT USED
 6. BLK(W7503) PUMP CONTROL
 7. N/C (KEY PIN)
 8. BLK(W7514) NOT USED
 9. BLK(W7510) CYL. 4 EXTEND
 10. BLK(W7507) CYL. 3 EXTEND
 11. BLK(W7504) CYL. 2 EXTEND
 12. BLK(W7501) CYL. 1 EXTEND

NOTE: DEUTSCH PIN NUMBERS TYPICAL UNLESS OTHERWISE NOTED

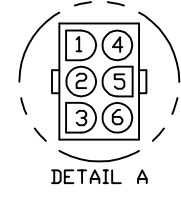
NOTE: WIRE NUMBERS ON THIS SHEET ARE REFERENCED TO HARNESS PLUGS.



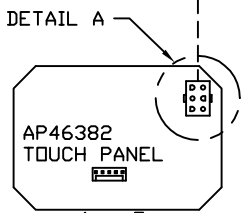
LED #	COLOR	INPUT J3	FUSE #	OUTPUT	RELAY #	DESCRIPTION
LED1	YELLOW	PIN 13	---	---	CR1	ROOM 1 EXTEND (COIL)
LED2	RED	---	FUSE 1 (15 AMP)	PIN 1	CR1	ROOM 1 EXTEND (CONTACT)
LED3	RED	---	FUSE 2 (15 AMP)	PIN 2	CR2	ROOM 1 RETRACT (CONTACT)
LED4	YELLOW	PIN 12	---	---	CR2	ROOM 1 RETRACT (COIL)
LED5	YELLOW	PIN 11	---	---	CR3	ROOM 2 EXTEND (COIL)
LED6	RED	---	FUSE 3 (15 AMP)	PIN 3	CR3	ROOM 2 EXTEND (CONTACT)
LED7	RED	---	FUSE 4 (15 AMP)	PIN 4	CR4	ROOM 2 RETRACT (CONTACT)
LED8	YELLOW	PIN 10	---	---	CR4	ROOM 2 RETRACT (COIL)
LED9	YELLOW	PIN 9	---	---	CR5	ROOM 3 EXTEND (COIL)
LED10	RED	---	FUSE 5 (15 AMP)	PIN 5	CR5	ROOM 3 EXTEND (CONTACT)
LED11	RED	---	FUSE 6 (15 AMP)	PIN 6	CR6	ROOM 3 RETRACT (CONTACT)
LED12	YELLOW	PIN 8	---	---	CR6	ROOM 3 RETRACT (COIL)
LED13	RED	---	FUSE 7 (15 AMP)	PIN 10	CR7	ROOM 4 RETRACT (CONTACT)
LED14	YELLOW	PIN 7	---	---	CR7	ROOM 4 RETRACT (COIL)
LED15	YELLOW	PIN 6	---	---	CR8	ROOM 4 EXTEND (COIL)
LED16	RED	---	FUSE 8 (15 AMP)	PIN 9	CR8	ROOM 4 EXTEND (CONTACT)

NOTE: INSTALLATION MUST CONFORM TO GOOD SHOP PRACTICES, SAE STANDARDS, RVIA STANDARDS, AND OTHER APPLICABLE STANDARDS.

NOTE: AP46382 TOUCH PANEL AND AP47709 CHIME KIT WHICH INCLUDES AP47711 AND AP47978 ARE ORDERED SEPARATELY FROM HWH CORP.



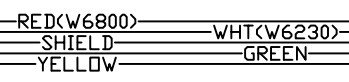
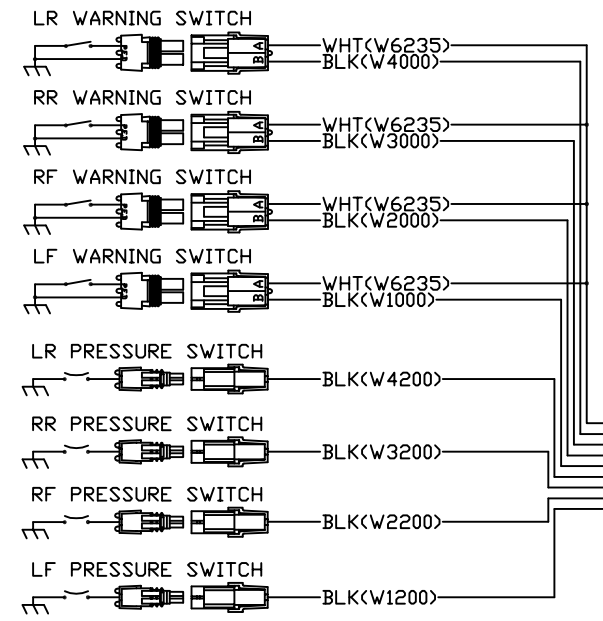
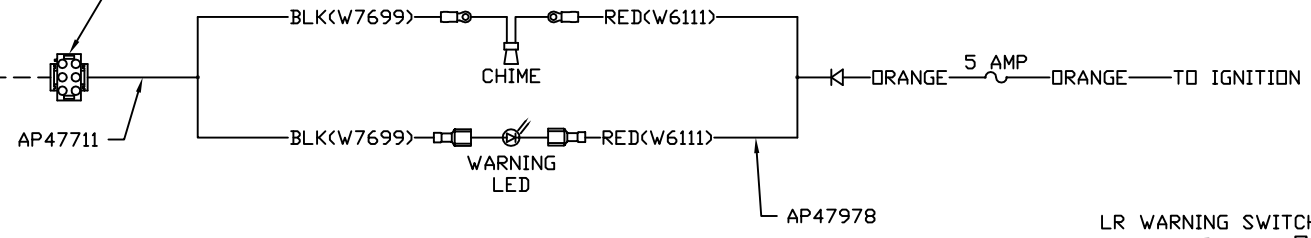
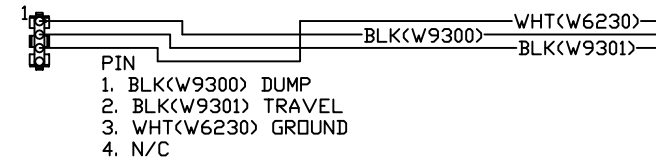
- PIN
1. N/C
 2. N/C
 3. N/C
 4. N/C
 5. BLK(W7699) WARNING LED/CHIME CONTROL
 6. N/C



- PIN
- 1 YELLOW CAN HI
 - 2 GREEN CAN LOW
 - 3 CAN SHIELD
 - 4 WHT(W6230) GROUND
 - 5 RED(W6800) POWER

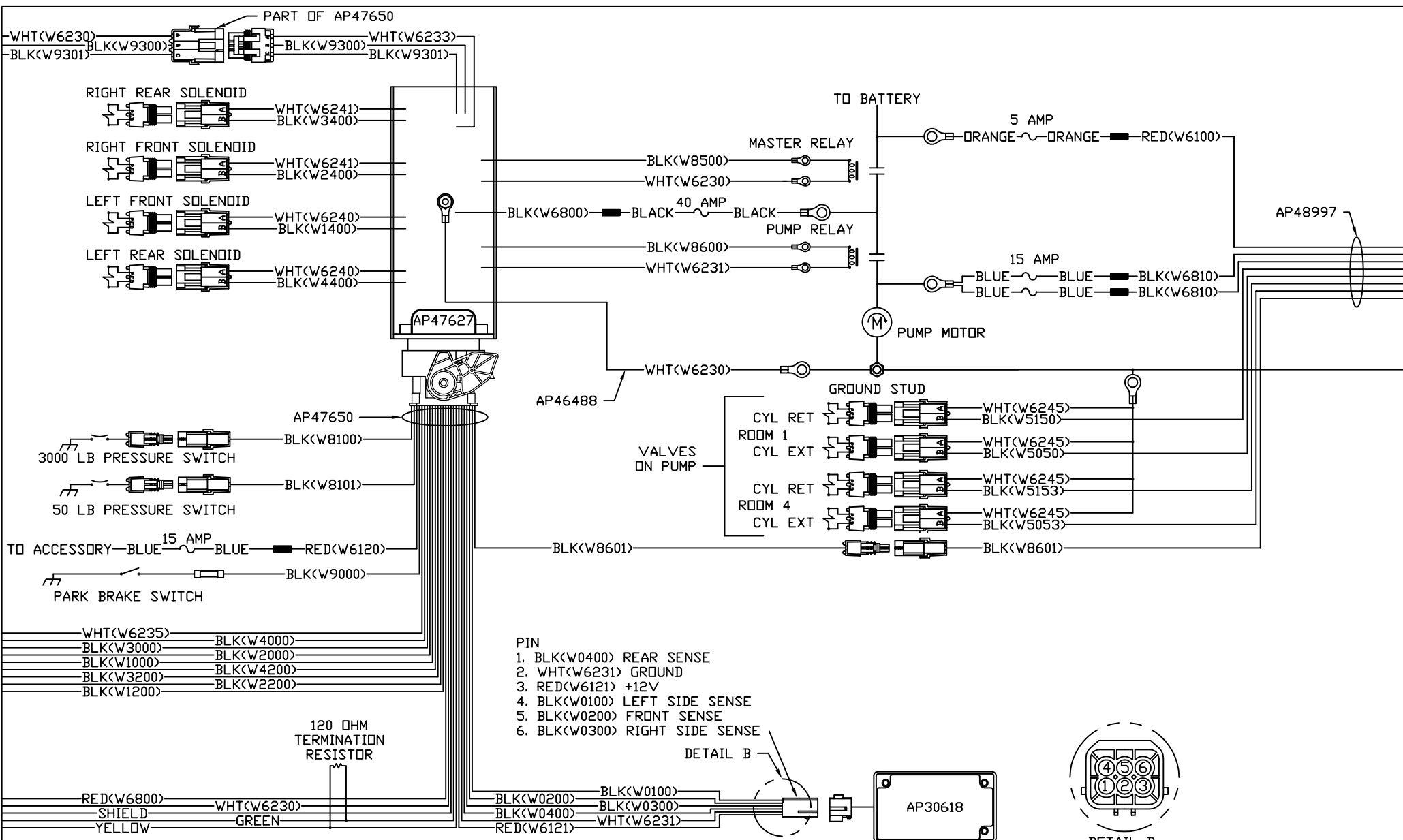
120 OHM
TERMINATION
RESISTOR

TO OEM PROVIDED
PILOT DUMP CONNECTION



NOTE: INSTALLATION MUST CONFORM TO GOOD SHOP PRACTICES, SAE STANDARDS, RVIA STANDARDS, AND OTHER APPLICABLE STANDARDS.

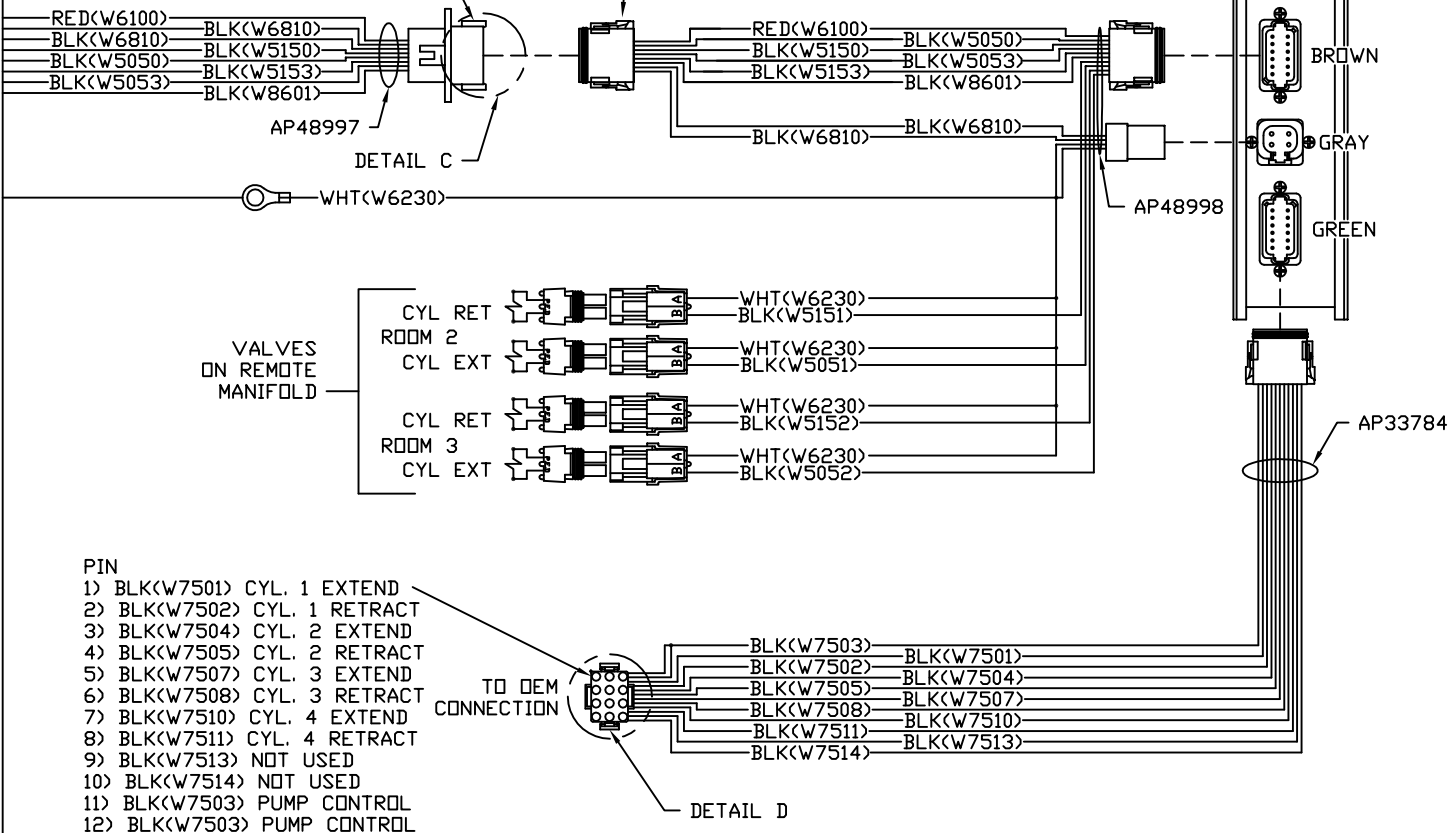
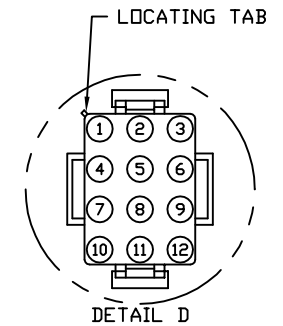
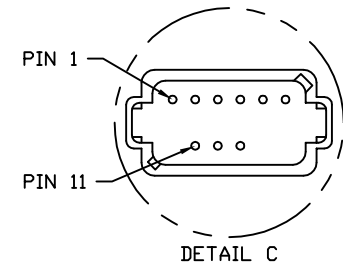
MP90857 C
15APR13



NOTE: INSTALLATION MUST CONFORM TO GOOD SHOP PRACTICES, SAE STANDARDS, RVIA STANDARDS, AND OTHER APPLICABLE STANDARDS.

- PIN
1. BLK(W6810) SW. BATT ROOM 1
 2. BLK(W5150) CYL. RETRACT ROOM 1
 3. BLK(W5050) CYL. EXTEND ROOM 1
 4. BLK(W6810) SW. BATT ROOM 4
 5. BLK(W5153) CYL. RETRACT ROOM 4
 6. BLK(W5053) CYL. EXTEND ROOM 4
 7. N/C
 8. N/C
 9. N/C (KEY PIN)
 10. BLK(W8601) PUMP REQUEST
 11. RED(W6100) BATTERY
 12. N/C

- PIN
1. BLK(W6810) SW. BATT ROOM 1
 2. BLK(W5150) CYL. RETRACT ROOM 1
 3. BLK(W5050) CYL. EXTEND ROOM 1
 4. BLK(W6810) SW. BATT ROOM 4
 5. BLK(W5153) CYL. RETRACT ROOM 4
 6. BLK(W5053) CYL. EXTEND ROOM 4
 7. N/C
 8. N/C (KEY PIN)
 9. N/C
 10. BLK(W8601) PUMP REQUEST
 11. RED(W6100) BATTERY
 12. N/C (KEY PIN)



- PIN
- 1) BLK(W7501) CYL. 1 EXTEND
 - 2) BLK(W7502) CYL. 1 RETRACT
 - 3) BLK(W7504) CYL. 2 EXTEND
 - 4) BLK(W7505) CYL. 2 RETRACT
 - 5) BLK(W7507) CYL. 3 EXTEND
 - 6) BLK(W7508) CYL. 3 RETRACT
 - 7) BLK(W7510) CYL. 4 EXTEND
 - 8) BLK(W7511) CYL. 4 RETRACT
 - 9) BLK(W7513) NOT USED
 - 10) BLK(W7514) NOT USED
 - 11) BLK(W7503) PUMP CONTROL
 - 12) BLK(W7503) PUMP CONTROL

NOTE: ROOM EXTEND AND RETRACT LOGIC IS CONTROLLED BY SPIDER

NOTE: INSTALLATION MUST CONFORM TO GOOD SHOP PRACTICES, SAE STANDARDS, RVIA STANDARDS, AND OTHER APPLICABLE STANDARDS.