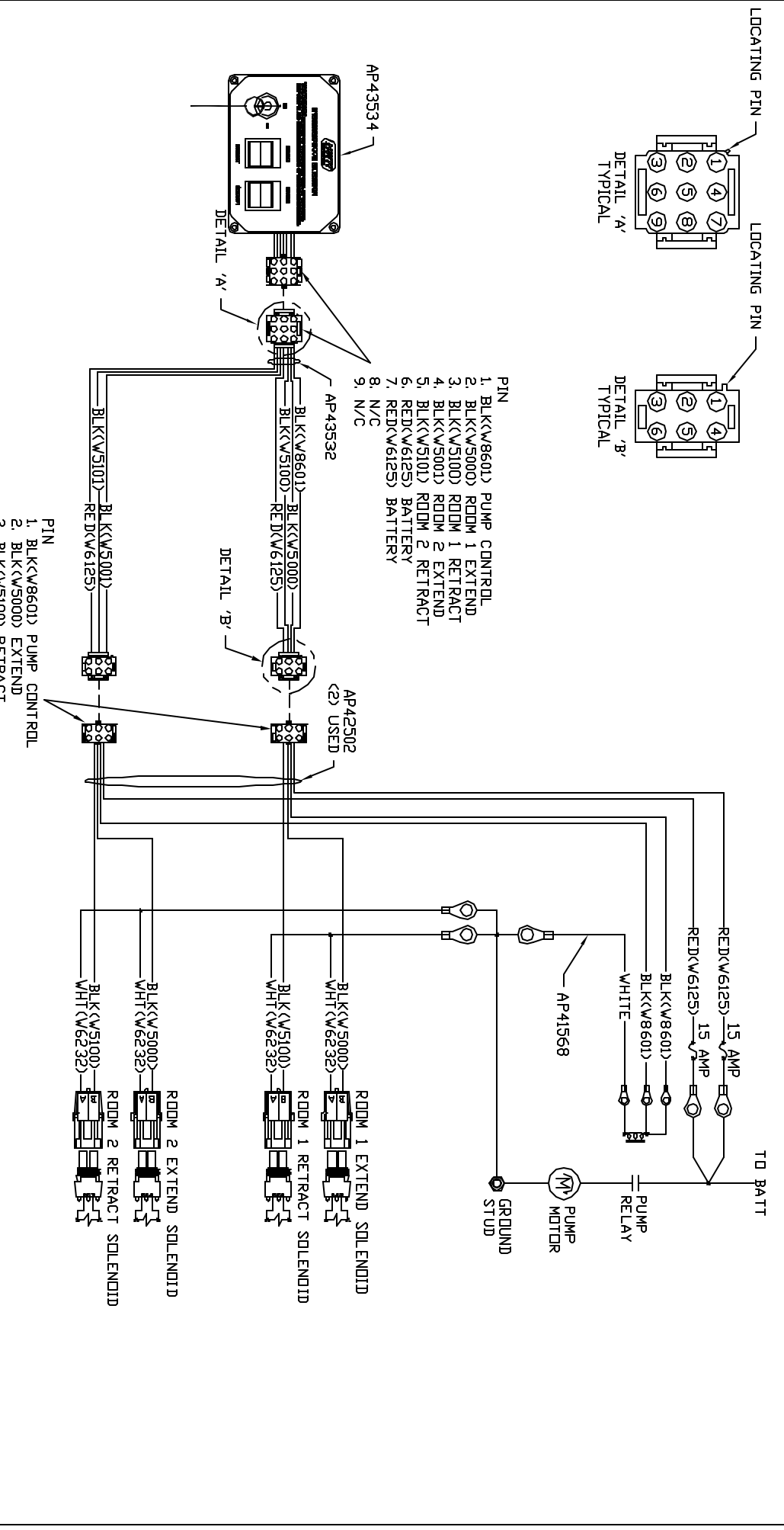


- PIN
1. BLK(W8601) PUMP CONTROL
 2. BLK(W5000) ROOM 1 EXTEND
 3. BLK(W5100) ROOM 1 RETRACT
 4. BLK(W5001) ROOM 2 EXTEND
 5. BLK(W5101) ROOM 2 RETRACT
 6. RED(W6125) BATTERY
 7. RED(W6125) BATTERY
 8. N/C
 9. N/C

- PIN
1. BLK(W8601) PUMP CONTROL
 2. BLK(W5000) EXTEND
 3. BLK(W5100) RETRACT
 4. N/C
 5. N/C
 6. RED(W6125) BATTERY



NOTE: INSTALLATION MUST CONFORM TO GOOD SHOP PRACTICES, SAE STANDARDS, RVIA STANDARDS, AND OTHER APPLICABLE STANDARDS.

NO.	DATE	REVISION

<p>THE INFORMATION DISCLOSED IN THIS DRAWING IS CONFIDENTIAL AND MUST NOT BE DISCLOSED OR USED IN ANY MANNER WHICH WILL BE DETRIMENTAL TO THE HW COMPANY</p>	<p>DRAWING NUMBER MP909610</p>
--	------------------------------------

HW H 1-80 EXT 267 SOUTH
 RT 1 MOSCOW, IDWA 52760
 SCALE 1:3 DATE 06DEC13 DRAWN BY
SYSTEM SCHEMATIC ELEC