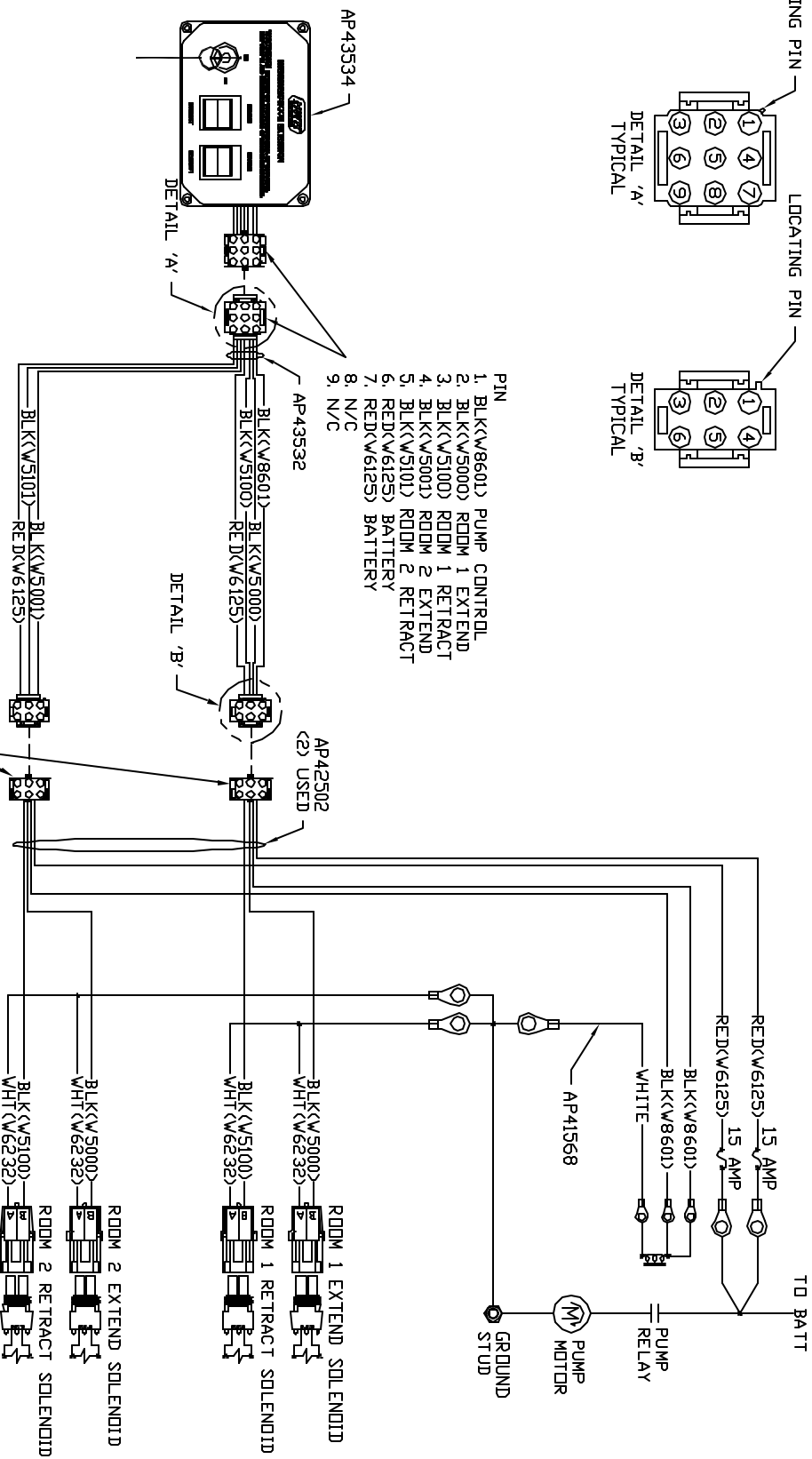


- ✓
- PIN
1. BLK<W860> PUMP CONTROL
  2. BLK<W500> EXTEND
  3. BLK<W5100> RETRACT
  4. N/C
  5. N/C
  6. RED<W6125> BATTERY



**NOTE: INSTALLATION MUST CONFORM TO GOOD SHOP PRACTICES, SAE STANDARDS, RVIA STANDARDS, AND OTHER APPLICABLE STANDARDS.**

	HWH			I-80 EXIT 267 SOUTH RT 1 MOSCOW, IDWA 52760	
	SCALE 1:3	DATE 10DEC13	DRAWN BY .		
	SYSTEM SCHEMATIC ELEC				
NO.	DATE	REVISION			
THE INFORMATION DISCLOSED ON THIS DRAWING IS CONFIDENTIAL AND MUST NOT BE DISCLOSED OR USED IN ANY MANNER WHICH WILL BE DETRIMENTAL TO THE HAN CORPORATION			DRAWING NUMBER MP909710		