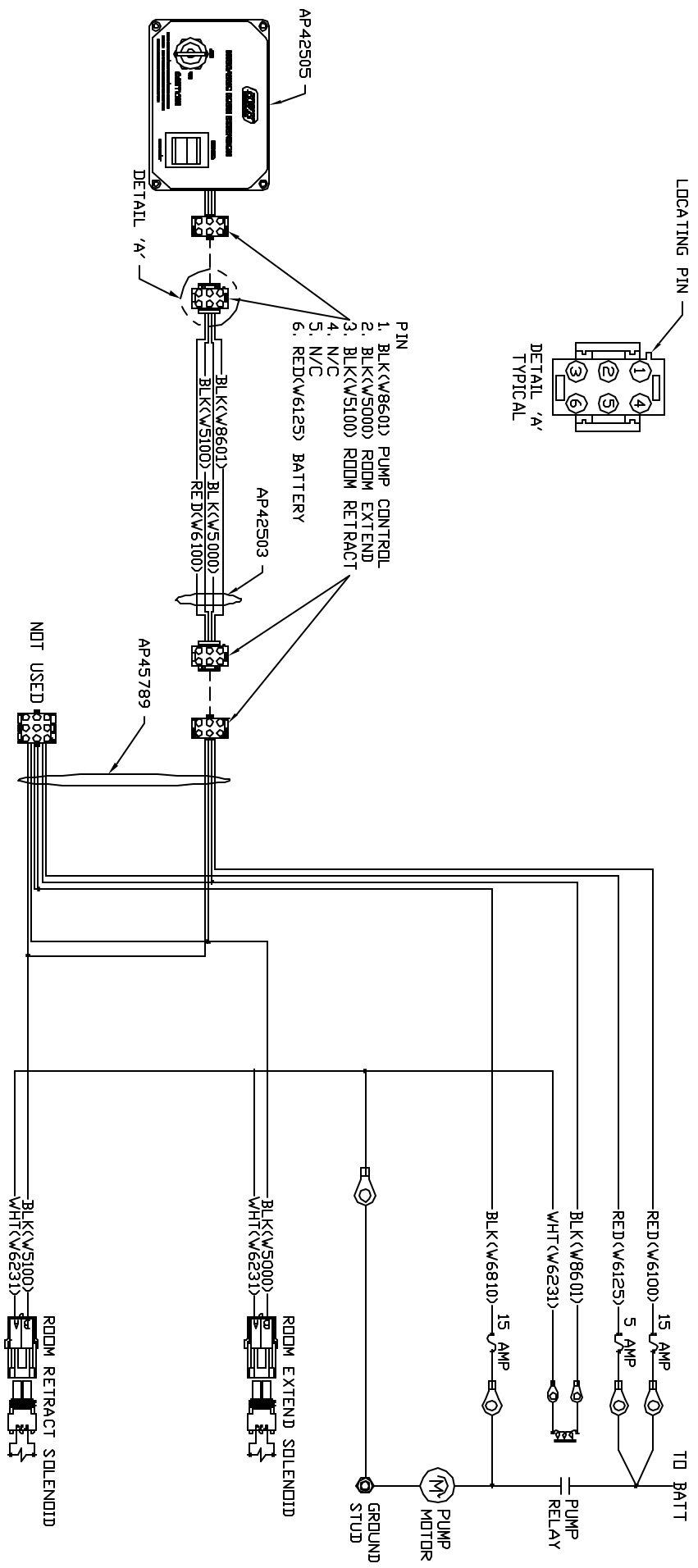


- PIN
1. BLK(W8601) PUMP CONTROL
 2. BLK(W5000) ROOM EXTEND
 3. BLK(W5100) ROOM RETRACT
 4. N/C
 5. N/C
 6. RED(W6125) BATTERY



NOTE: INSTALLATION MUST CONFORM TO GOOD SHOP PRACTICES, SAE STANDARDS, RVIA STANDARDS, AND OTHER APPLICABLE STANDARDS.

HWH		I-80 EXIT 267 SOUTH RT 1 MOSCOW, IOWA 52760	
SCALE	DATE	BY	REV.
1:3	28FEB14	BRAIN	1
SYSTEM SCHEMATIC ELEC			
NO.	DATE	REVISION	DRAWING NUMBER
			MP910100

THE INFORMATION DISCLOSED IN THIS DRAWING IS CONFIDENTIAL AND MUST NOT BE DISCLOSED OR USED IN ANY MANNER WHICH WILL BE DETRIMENTAL TO THE HWH CORPORATION