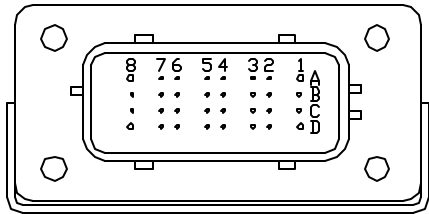
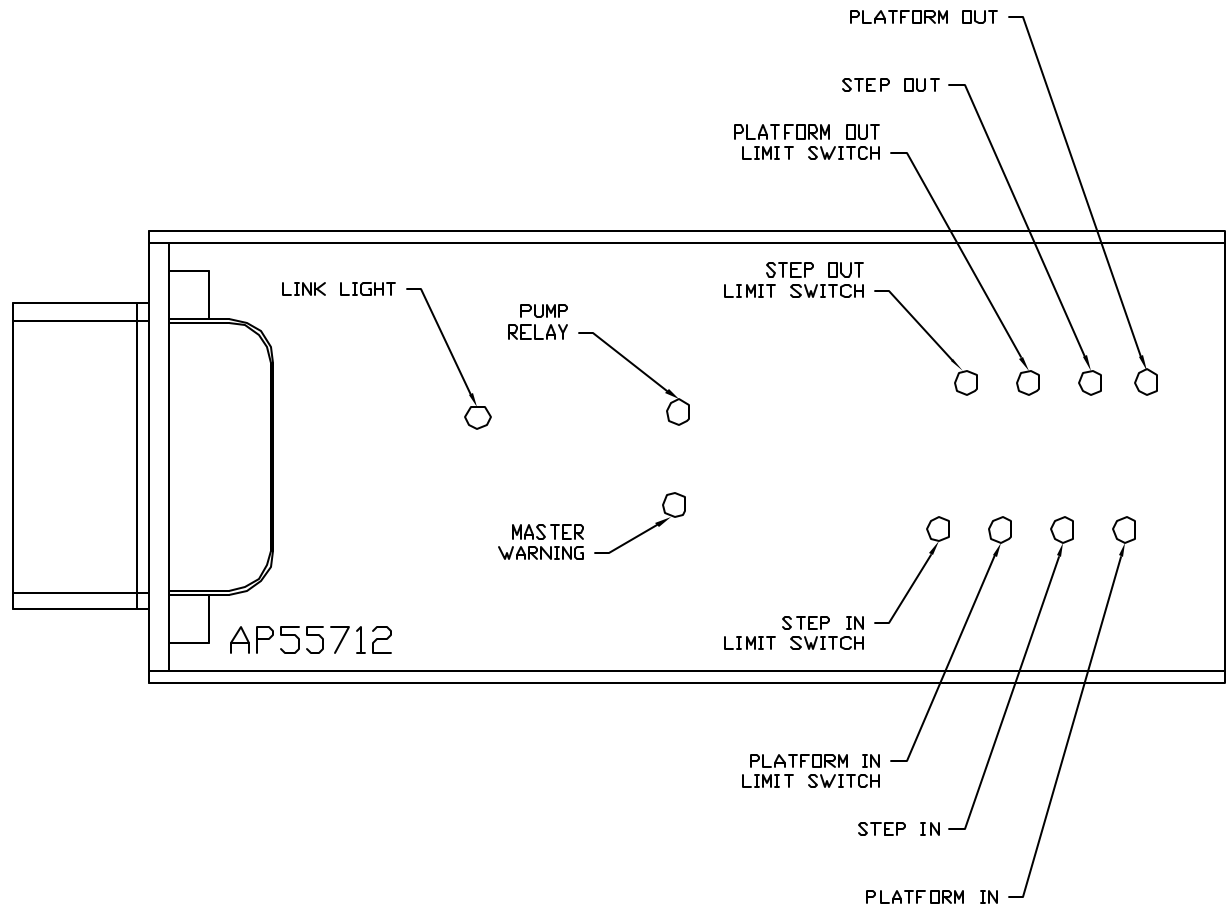


FRONT VIEW - AP55712



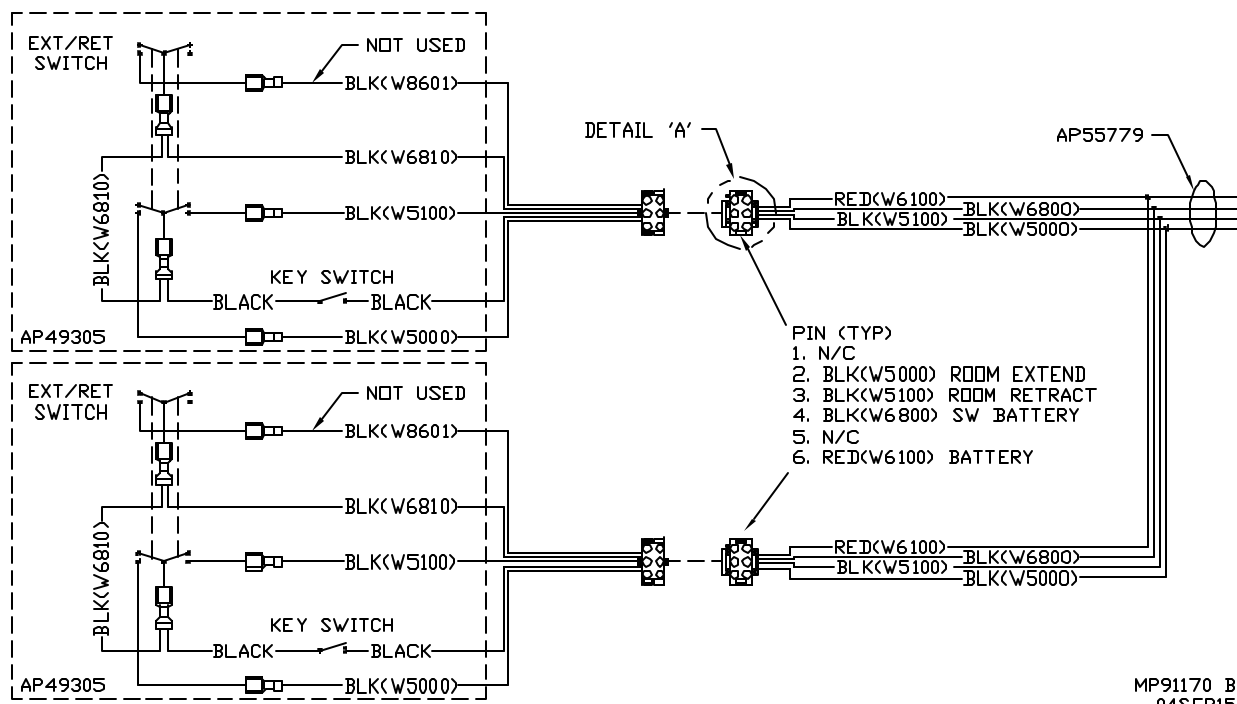
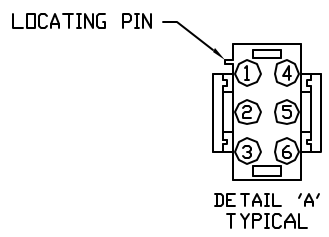
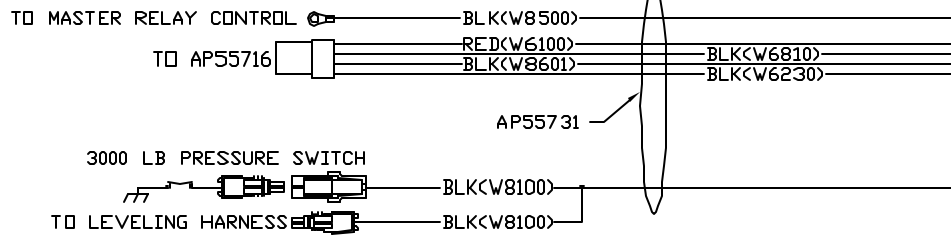
- PIN
- A1. RED(W6110) - IGNITION
 - A2. N/C
 - A3. N/C
 - A4. N/C
 - A5. BLK(W5701) - PLATFORM OUT LIMIT SWITCH
 - A6. N/C
 - A7. BLK(W5100) - STAIRWAY RETRACT
 - A8. N/C
 - B1. RED(W6801) - +12V TO LIMIT SWITCHES
 - B2. N/C
 - B3. N/C
 - B4. N/C
 - B5. BLK(W5700) - STEP IN LIMIT SWITCH
 - B6. BLK(W5000) - STAIRWAY EXTEND
 - B7. N/C
 - B8. BLK(W8100) - 3000 LB. PRESSURE SWITCH
 - C1. RED(W6802) - +12V TO LIMIT SWITCHES
 - C2. N/C
 - C3. WHT(W6230) - LIMIT SWITCH GROUND
 - C4. N/C
 - C5. BLK(W5702) - STEP OUT LIMIT SWITCH
 - C6. N/C
 - C7. N/C
 - C8. N/C
 - D1. BLK(W6800) - SWITCHED +12V TO MODULE
 - D2. N/C
 - D3. N/C
 - D4. BLK(W5703) - PLATFORM IN LIMIT SWITCH
 - D5. N/C
 - D6. N/C
 - D7. N/C
 - D8. BLK(W9000) - PARK BRAKE

NOTE: WIRE NUMBERS ON THIS SHEET ARE REFERENCED TO HARNESS PLUGS.



NOTE: INSTALLATION MUST CONFORM TO GOOD SHOP PRACTICES, SAE STANDARDS, RVIA STANDARDS, AND OTHER APPLICABLE STANDARDS.

		HWH		I-80 EXIT 267 SOUTH RT 1 MOSCOW, IOWA 52760	
		SCALE 1:3	DATE 04SEP15	DRAWN BY .	
		SYSTEM SCHEMATIC ELEC			
NO.	DATE	REVISION			
THE INFORMATION DISCLOSED ON THIS DRAWING IS CONFIDENTIAL AND MUST NOT BE DISCLOSED OR USED IN ANY MANNER WHICH WILL BE DETRIMENTAL TO THE HWH CORPORATION				DRAWING NUMBER MP91170 A/C	



NOTE: INSTALLATION MUST CONFORM TO GOOD SHOP PRACTICES, SAE STANDARDS, RVIA STANDARDS, AND OTHER APPLICABLE STANDARDS.

