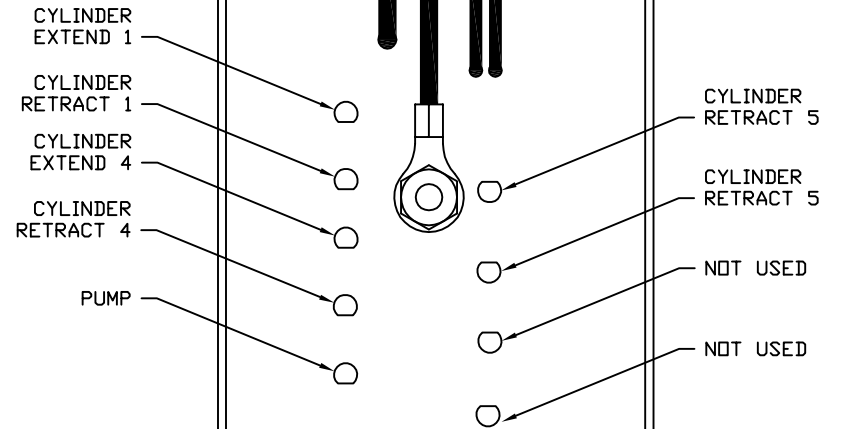
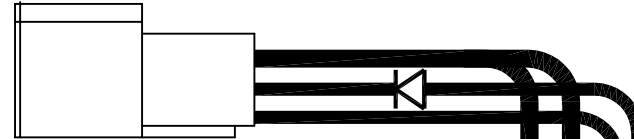
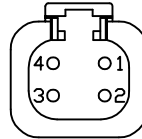
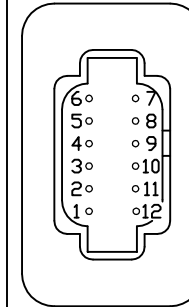


- PIN
1. BLK(W6810) SW. BATTERY FROM PUMP RELAY
  2. BLK(W6800) BATTERY
  3. BLK(W8601) PUMP (HAS DIODE)
  4. WHT(W6230) GROUND



- PIN
1. BLK(W5000) EXTEND ROOM 1
  2. BLK(W5100) RETRACT ROOM 1
  3. BLK(W5003) EXTEND STEP
  4. BLK(W5103) RETRACT STEP
  5. N/C
  6. N/C
  7. RED(W6805) +12V TO ROOM SWITCHES
  8. N/C
  9. BLK(W5004) EXTEND ROOM 4
  10. BLK(W5104) RETRACT ROOM 4
  11. N/C
  12. N/C



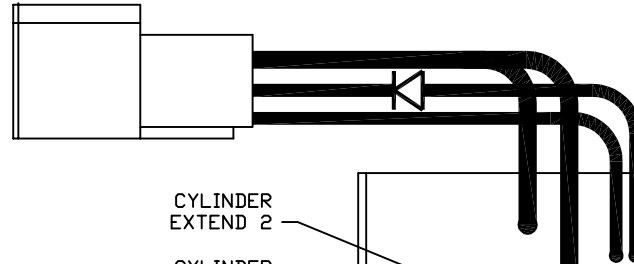
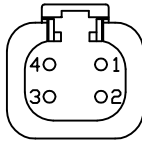
AP53292

		<b>HWH</b>		I-80 EXIT 267 SOUTH RT 1 MOSCOW, IOWA 52760	
		SCALE 1:3	DATE 14MAR16	DRAWN BY .	
		<b>SYSTEM SCHEMATIC ELEC</b>			
NO.	DATE	REVISION			
		THE INFORMATION DISCLOSED ON THIS DRAWING IS CONFIDENTIAL AND MUST NOT BE DISCLOSED OR USED IN ANY MANNER WHICH WILL BE DETRIMENTAL TO THE HWH CORPORATION			
		DRAWING NUMBER MP91214 A/E			

NOTE: INSTALLATION MUST CONFORM TO GOOD SHOP PRACTICES, SAE STANDARDS, RVIA STANDARDS, AND OTHER APPLICABLE STANDARDS.

PIN

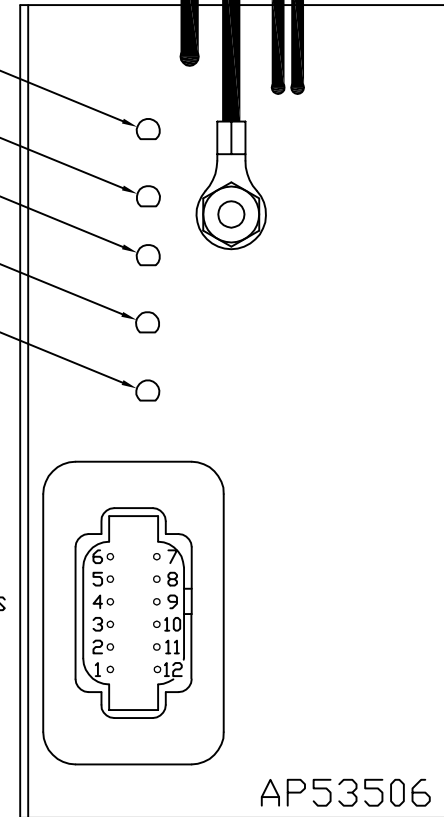
1. BLK(W6810) SW. BATTERY FROM PUMP RELAY
2. BLK(W6800) BATTERY
3. BLK(W8601) PUMP (HAS DIODE)
4. WHT(W6230) GROUND



- CYLINDER EXTEND 2
- CYLINDER RETRACT 2
- CYLINDER EXTEND 3
- CYLINDER RETRACT 3
- PUMP

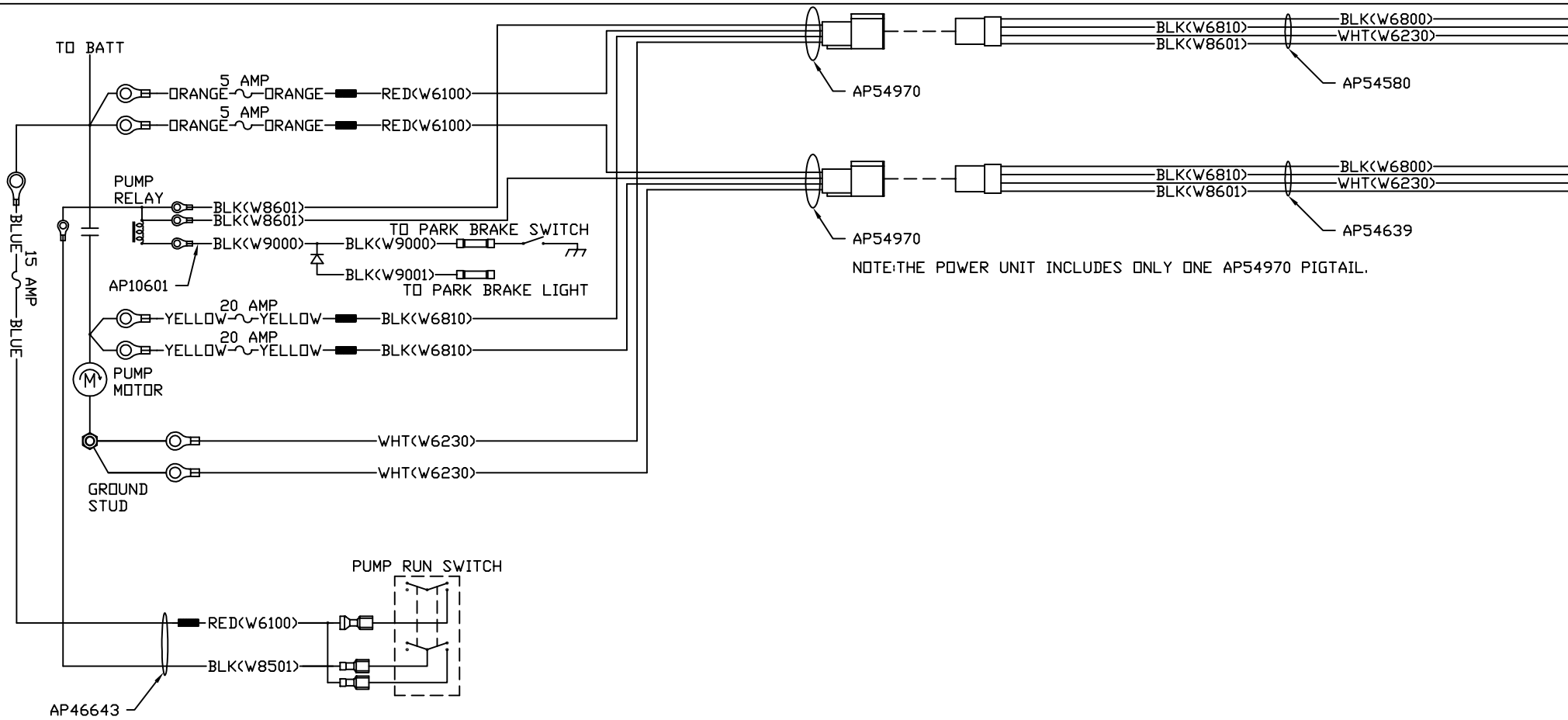
PIN

1. BLK(W5001) EXTEND ROOM 2
2. BLK(W5101) RETRACT ROOM 2
3. BLK(W5002) EXTEND ROOM 3
4. BLK(W5102) RETRACT ROOM 3
5. N/C
6. N/C
7. RED(W6805) +12V TO ROOM SWITCHES
8. N/C
9. N/C
10. N/C
11. N/C
12. N/C

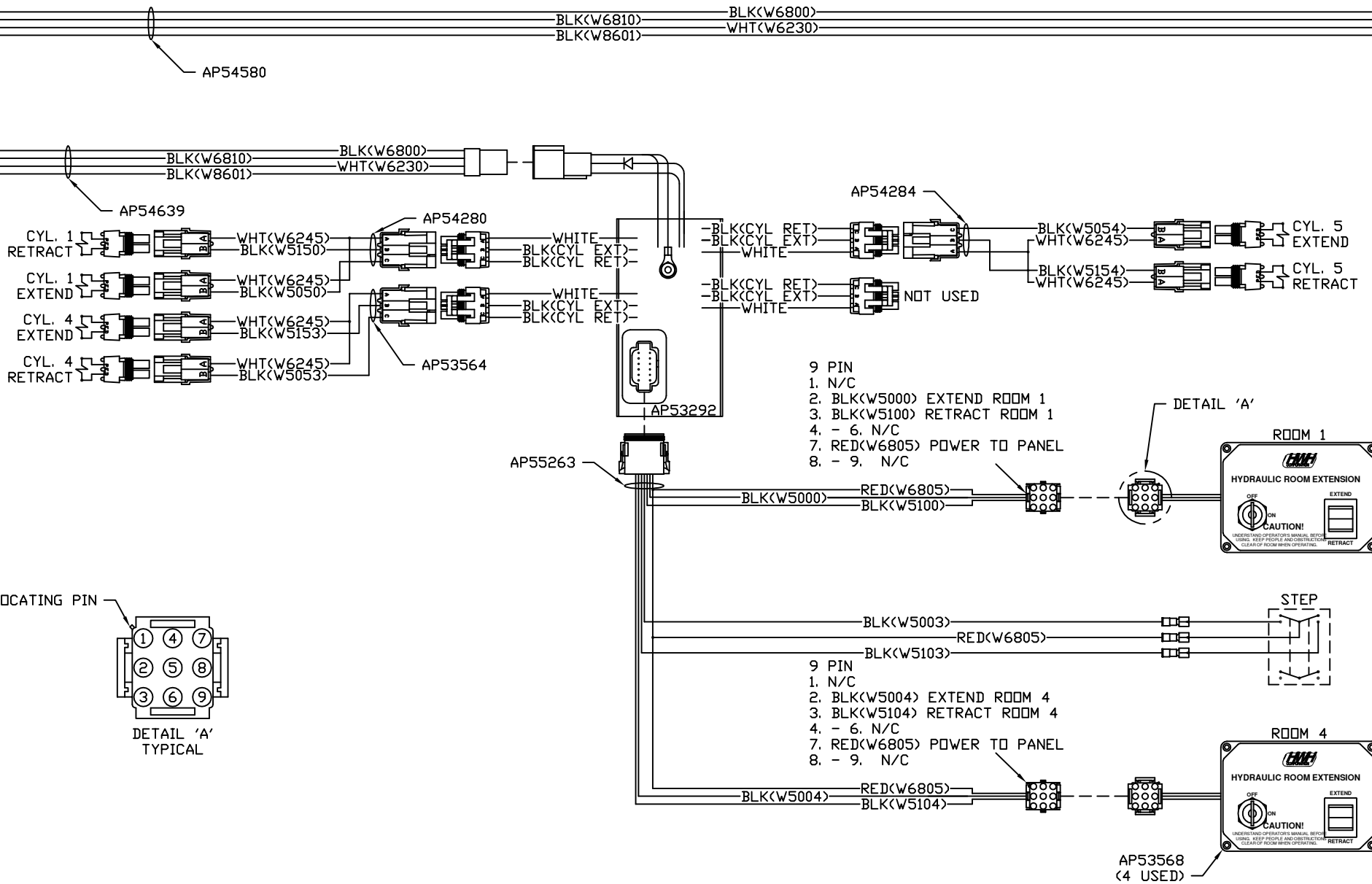


NOTE: INSTALLATION MUST CONFORM TO GOOD SHOP PRACTICES, SAE STANDARDS, RVIA STANDARDS, AND OTHER APPLICABLE STANDARDS.

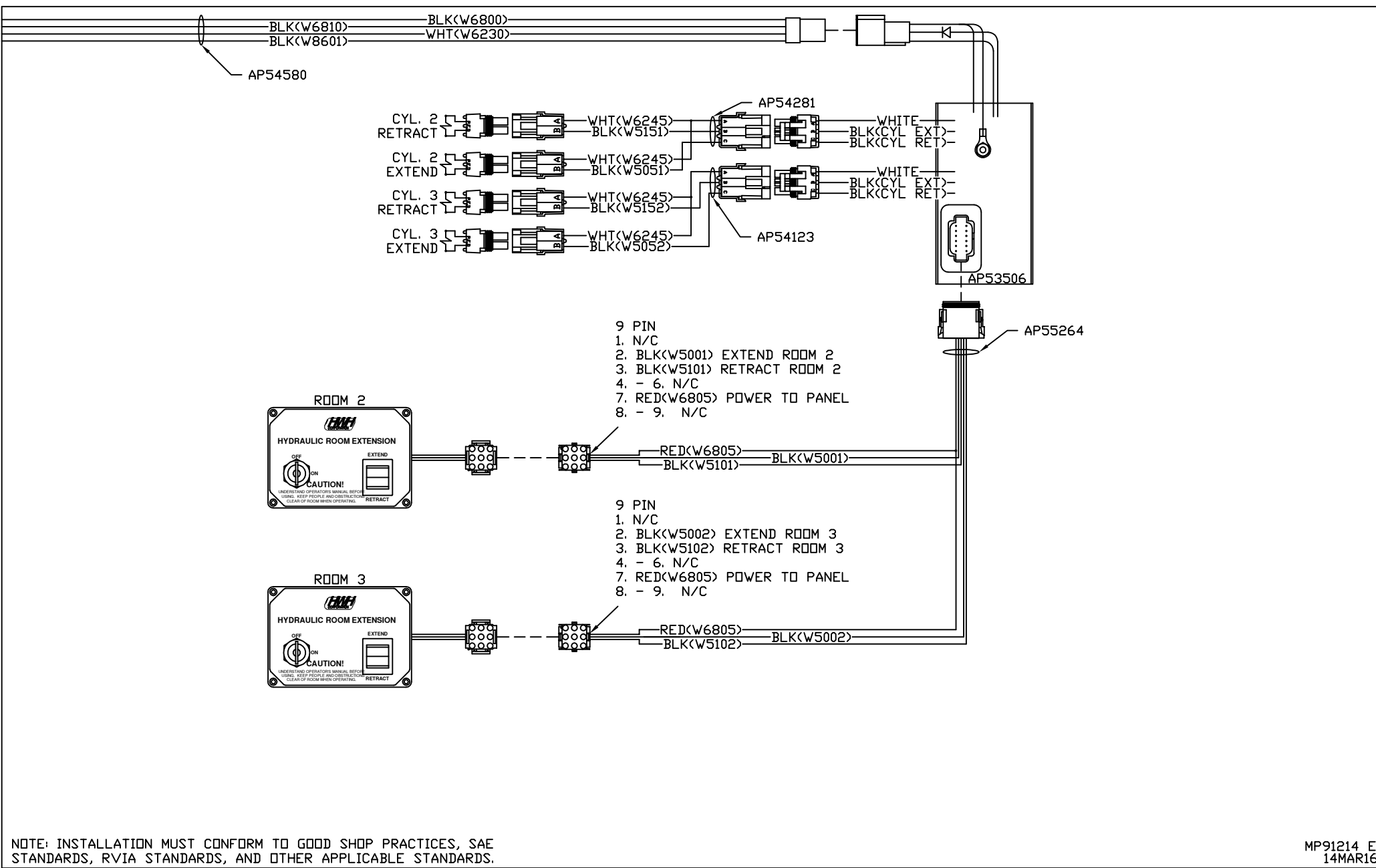
MP91214 B  
14MAR16



NOTE: INSTALLATION MUST CONFORM TO GOOD SHOP PRACTICES, SAE STANDARDS, RVIA STANDARDS, AND OTHER APPLICABLE STANDARDS.



NOTE: INSTALLATION MUST CONFORM TO GOOD SHOP PRACTICES, SAE STANDARDS, RVIA STANDARDS, AND OTHER APPLICABLE STANDARDS.



NOTE: INSTALLATION MUST CONFORM TO GOOD SHOP PRACTICES, SAE STANDARDS, RVIA STANDARDS, AND OTHER APPLICABLE STANDARDS.