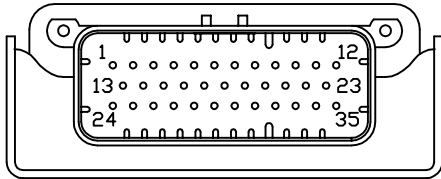
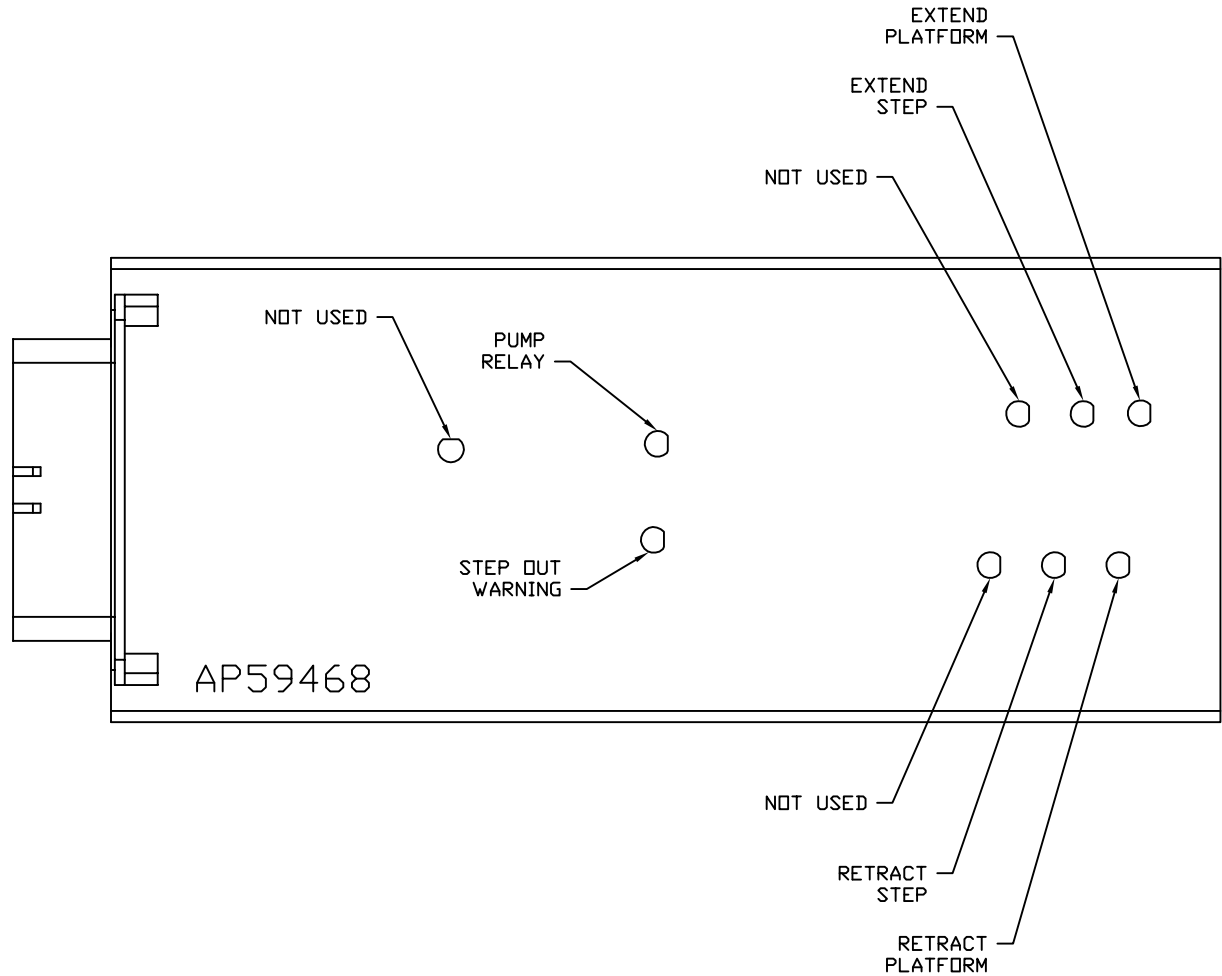


FRONT VIEW - AP59468



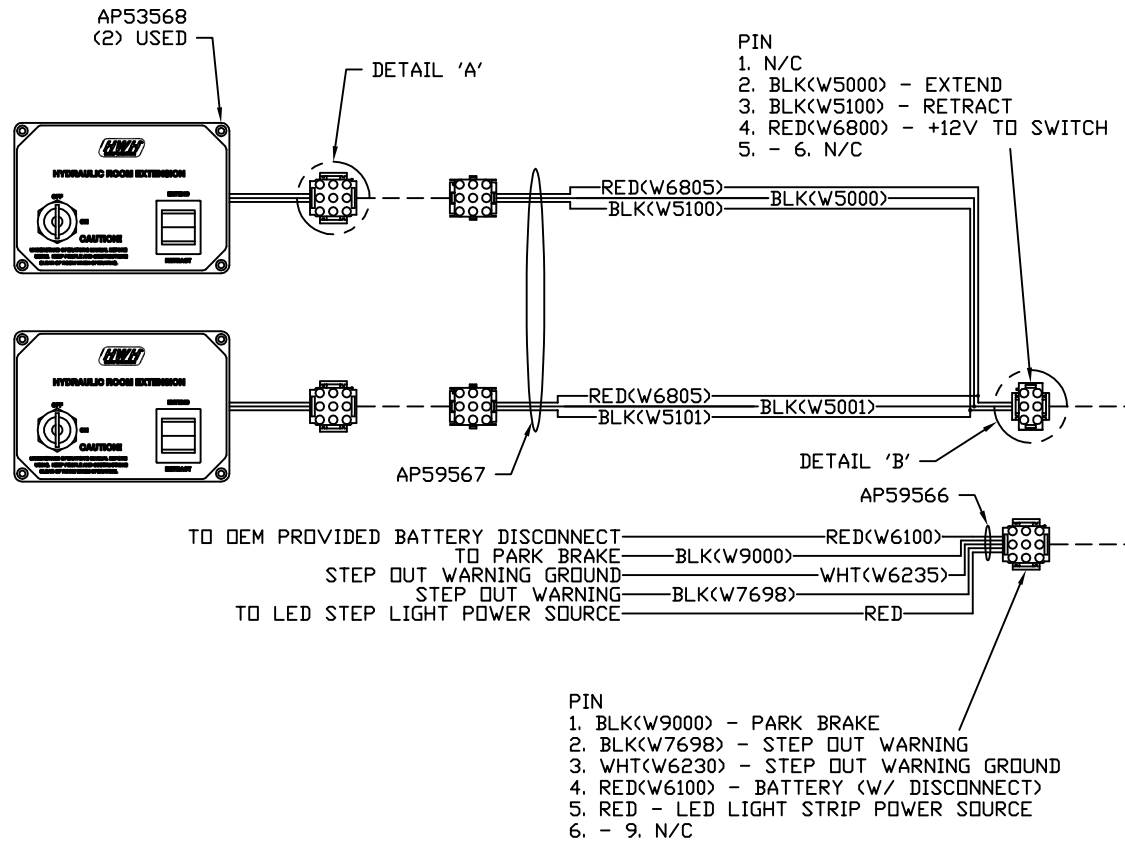
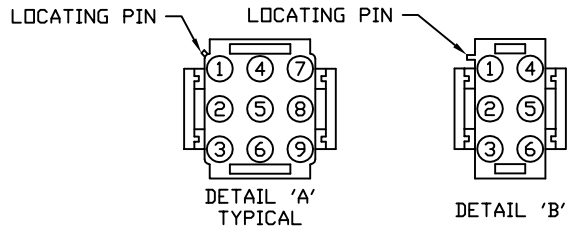
- PIN
1. BLK(W9000) - PARK BRAKE SWITCH
 2. N/C
 3. N/C
 4. N/C
 5. BLK(W5704) - HANDRAIL DOWN LIMIT SWITCH
 6. BLK(W5700) - STEP IN LIMIT SWITCH
 7. N/C
 8. N/C
 9. N/C
 10. N/C
 11. N/C
 12. N/C
 13. N/C
 14. N/C
 15. N/C
 16. N/C
 17. BLK(W5701) - PLATFORM OUT LIMIT SWITCH
 18. N/C
 19. N/C
 20. N/C
 21. N/C
 22. N/C
 23. N/C
 24. N/C
 25. BLK(W5000) - EXTEND
 26. N/C
 27. N/C
 28. BLK(W5703) - PLATFORM IN LIMIT SWITCH
 29. N/C
 30. BLK(W5100) - RETRACT
 31. N/C
 32. WHT(W6230) - LIMIT SWITCH GROUND
 33. N/C
 34. BLK(W6800) - +12V TO EXTEND / RETRACT SWITCH
 35. 5 AMP FUSEHOLDER TO RED(W6100) - BATTERY

NOTE: WIRE NUMBERS ON THIS SHEET ARE REFERENCED TO HARNESS PLUGS.



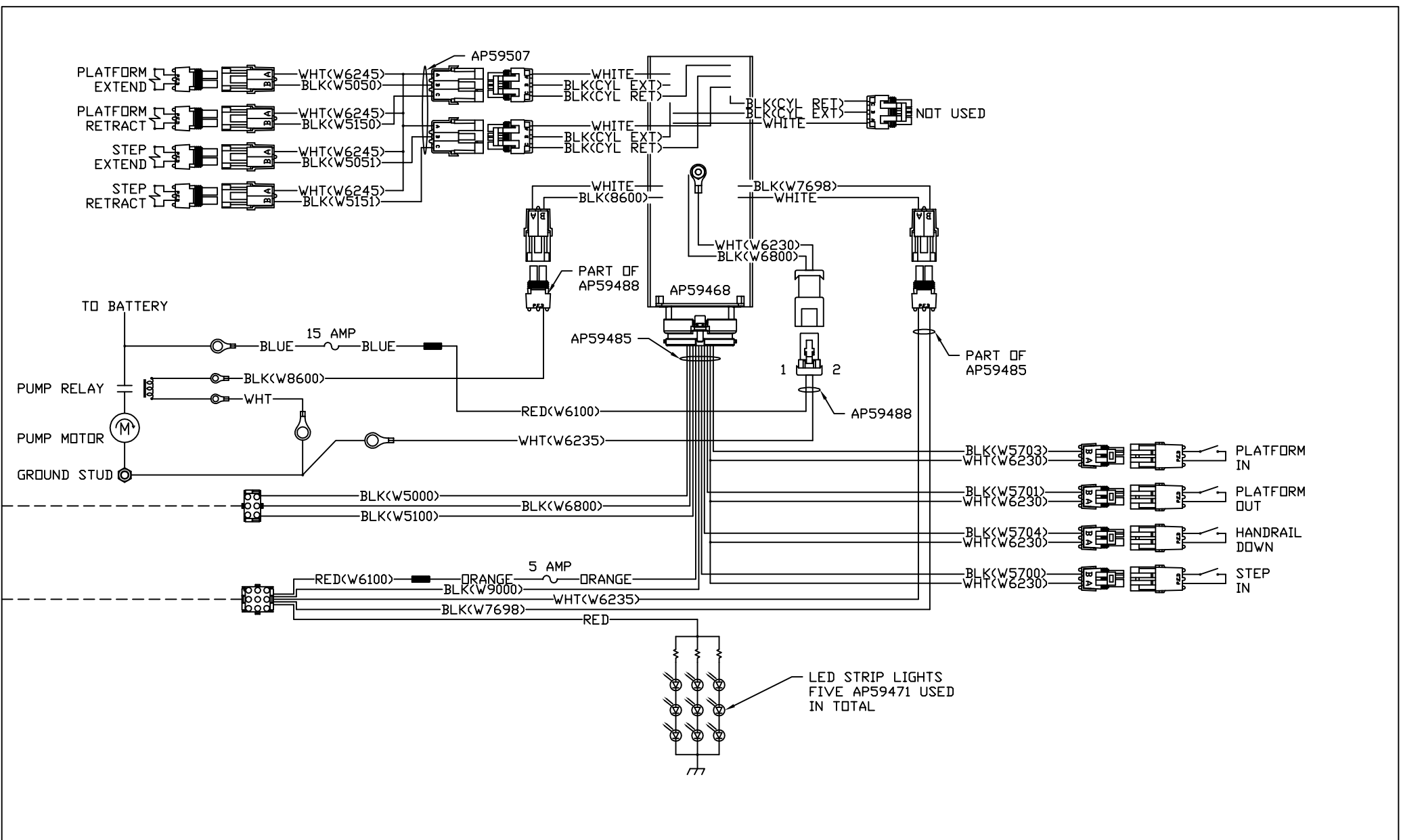
NOTE: INSTALLATION MUST CONFORM TO GOOD SHOP PRACTICES, SAE STANDARDS, RVIA STANDARDS, AND OTHER APPLICABLE STANDARDS.

		HWH		I-80 EXIT 267 SOUTH RT 1 MOSCOW, IOWA 52760	
		SCALE 1:3	DATE 11OCT18	DRAWN BY .	
		SYSTEM SCHEMATIC ELEC			
NO.	DATE	REVISION			
THE INFORMATION DISCLOSED ON THIS DRAWING IS CONFIDENTIAL AND MUST NOT BE DISCLOSED OR USED IN ANY MANNER WHICH WILL BE DETRIMENTAL TO THE HWH CORPORATION			DRAWING NUMBER MP91423 A/C		



NOTE: INSTALLATION MUST CONFORM TO GOOD SHOP PRACTICES, SAE STANDARDS, RVIA STANDARDS, AND OTHER APPLICABLE STANDARDS.

MP91423 B
11OCT18



NOTE: INSTALLATION MUST CONFORM TO GOOD SHOP PRACTICES, SAE STANDARDS, RVIA STANDARDS, AND OTHER APPLICABLE STANDARDS.