

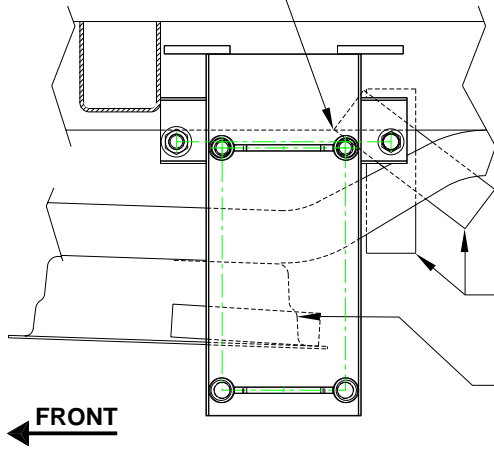
FRONT JACKS MOUNTING - SPRINTER CHASSIS

INSTRUCTION SHEET

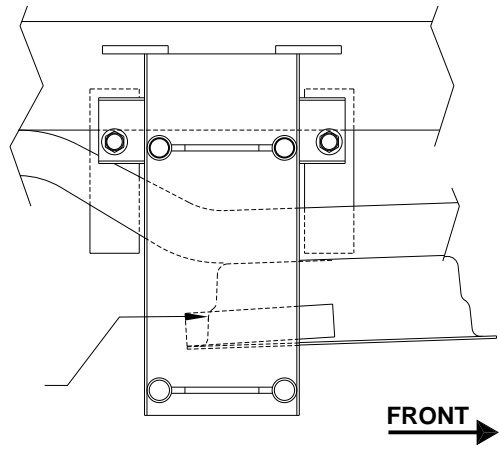
VS 30 FRONT KIT

CHANNEL **MAY** NEED TO BE ROTATED, DO NOT ALLOW CORNER TO DROP BELOW FRAME RAIL

MOUNTING BRACKETS SHOULD BE AS FAR FORWARD AS POSSIBLE AND STRAIGHT ACROSS FROM EACH OTHER. BRACKETS ARE RIGHT AND LEFT HAND SPECIFIC. THE SUPPORT BAR ON THE BACK OF EACH BRACKET SHOULD REST ON AND RUN PARALLEL TO THE LIP OF AND THE TRANSMISSION CROSS MEMBER.



DRIVERS SIDE (LH) - AP60503



PASSENGER SIDE (RH) - AP60506

a CHANNEL FORMED



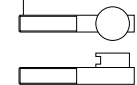
b WASHER 3/4" OD
1/4" THICK

c BOLT 3/8" x 4"

d NUT 3/8" WHIZ

e NUT 7/16" WHIZ

f 7/16" CLAMP THREADED**

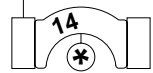


g BRACKET GROOVE

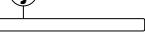


h BOLT 7/16" x 2.25"
AP52410

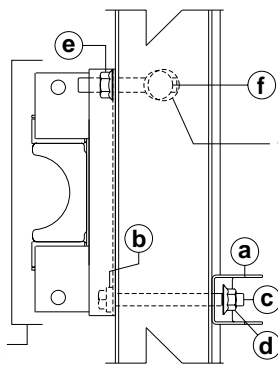
i BRACKET BARREL



j BOLT 7/16" x 4.5"



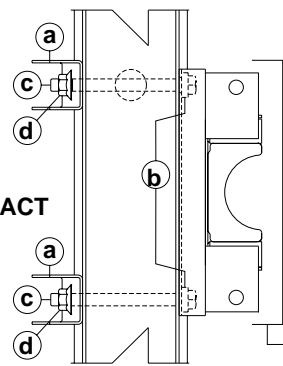
DRIVERS SIDE - TOP



(LH) BRACKET

FRONT ↑

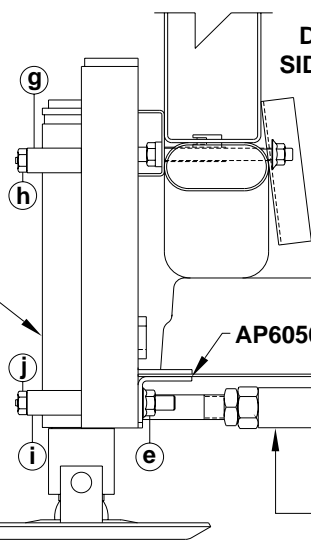
PASSENGER SIDE - TOP



(RH) BRACKET

HOLE FOR **SHOULDER SHOULD BE PRESENT FROM THE FACTORY, IF NOT, CONTACT HWH CORPORATION

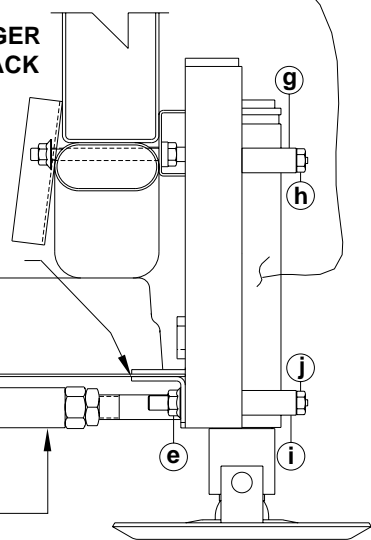
DRIVERS SIDE - BACK



PASSENGER SIDE - BACK

NOTE: USE BARREL GROOVES TO RAISE OR LOWER THE CYLINDER TO ACHIEVE OPTIMAL MOUNTING HEIGHT

AP54367



TRANSMISSION CROSS MEMBER
AP60502

SEE MI15.4751E FOR CROSSTIE INSTALLATION (LONG TIE ROD)

* BRACKETS ARE DIAMETER SPECIFIC. THE SMALLER DIAMETER MUST BE USED IN A GROOVE. THE LARGER DIAMETER MUST BE USED AROUND THE BARREL.

MI15.4751F
09APR21