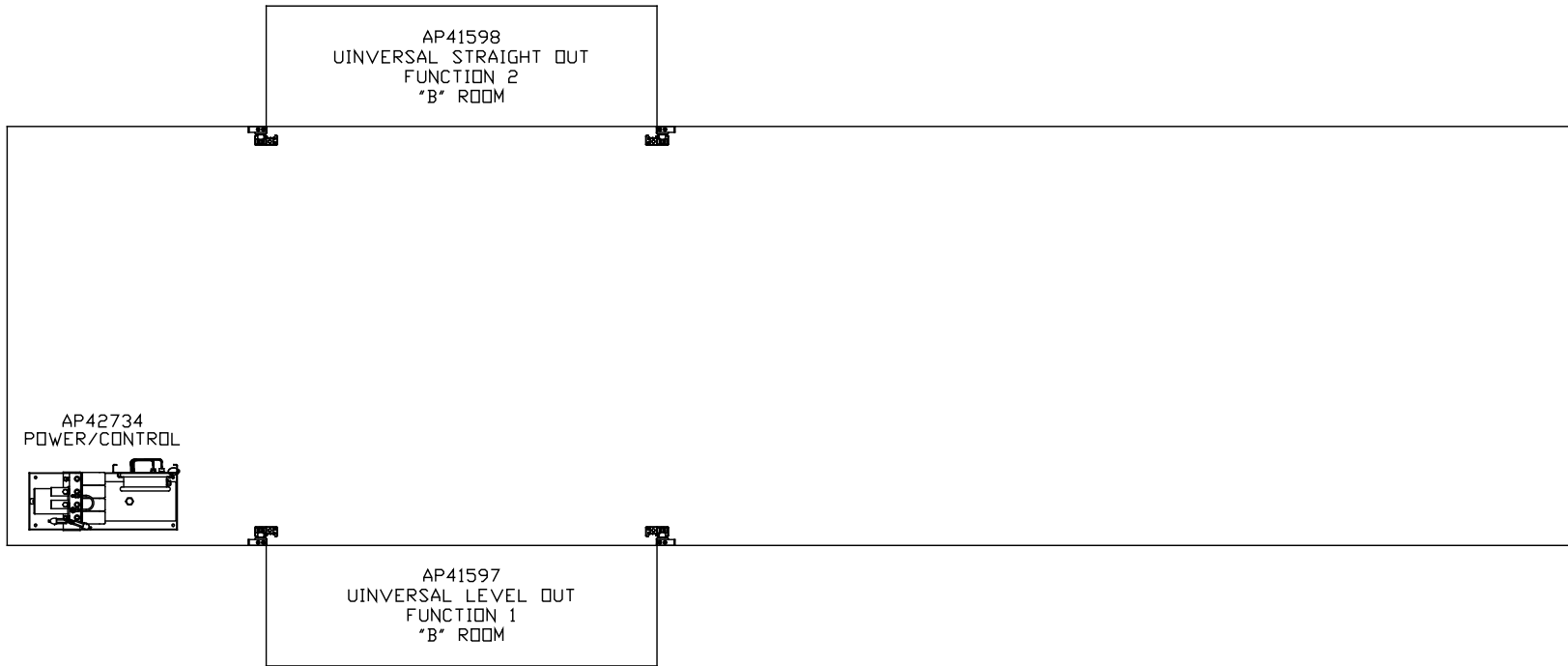


ORIENTATION  
 ← FRONT



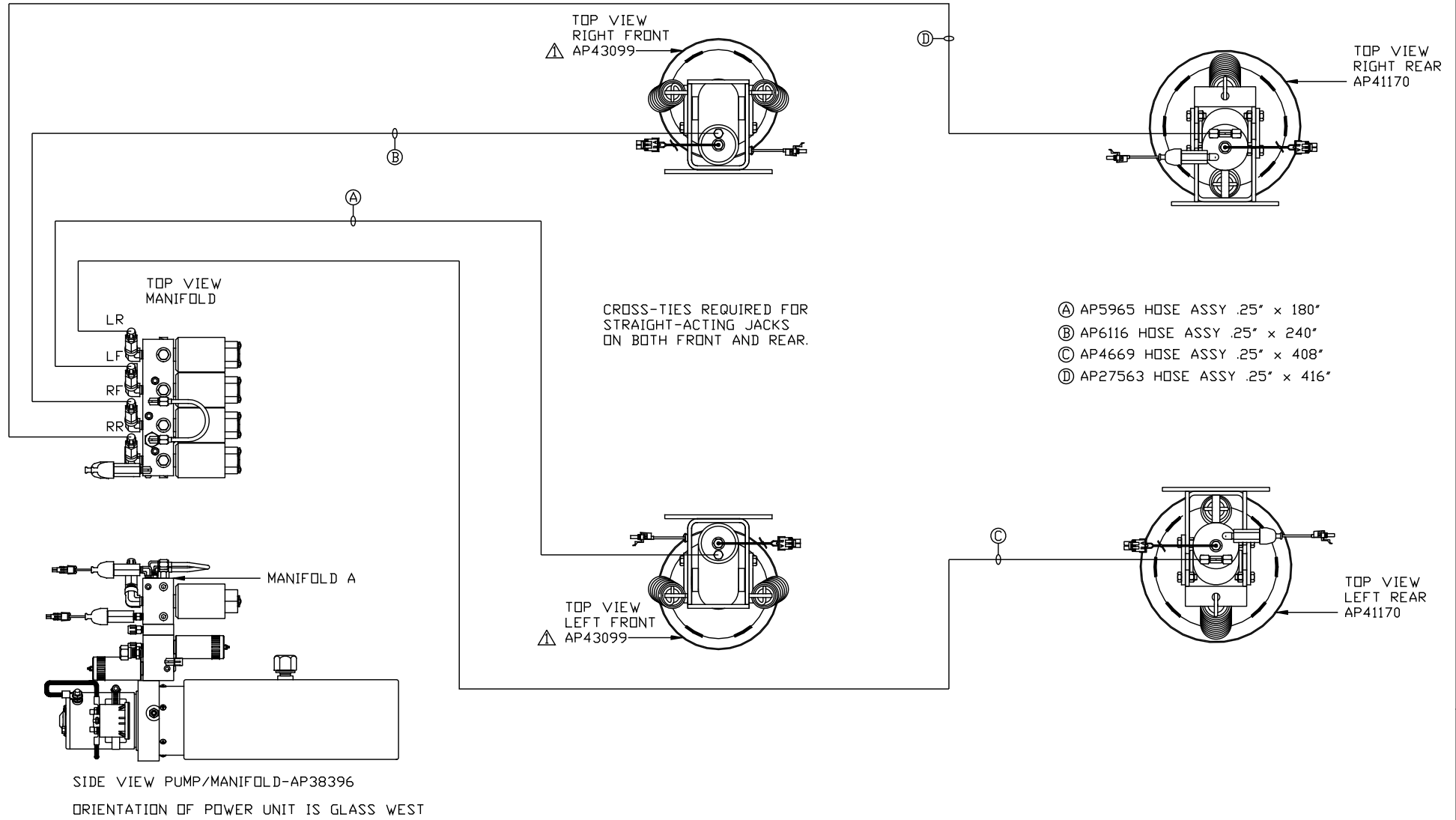
NOTE: INSTALLATION MUST CONFORM TO GOOD SHOP PRACTICES, SAE STANDARDS, RVIA STANDARDS, AND OTHER APPLICABLE STANDARDS.

LEVELING SYSTEM: AP42715

		HWH		I-80 EXIT 267 SOUTH RT 1 MOSCOW, IOWA 52760	
		SCALE 1:6	DATE 01MAY08	DRAWN BY .	
△	25JUL12	WAS AP30718			
NO.	DATE	REVISION			
THE INFORMATION DISCLOSED ON THIS DRAWING IS CONFIDENTIAL AND MUST NOT BE DISCLOSED OR USED IN ANY MANNER WHICH WILL BE DETRIMENTAL TO THE HWH CORPORATION					
TRIPLE E				DRAWING NUMBER MP70004 A/D	

HYD CONN DIAGRAM

ORIENTATION  
 ← FRONT



NOTE: INSTALLATION MUST CONFORM TO GOOD SHOP PRACTICES, SAE STANDARDS, RVIA STANDARDS, AND OTHER APPLICABLE STANDARDS.

MP70004 B/D  
 25JUL12

ORIENTATION

← FRONT

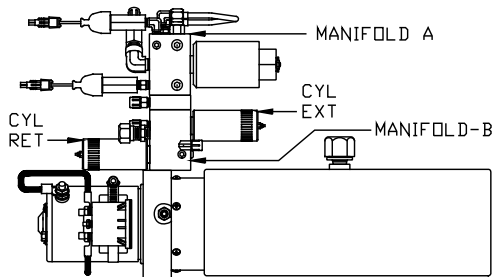
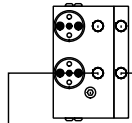
\*: PART OF THE ROOM  
EXTENSION MECHANISM.

- Ⓐ AP4061 HOSE ASSY .25" x 216"  
ROD END - ALWAYS PRESSURIZED
- Ⓑ AP4061 HOSE ASSY .25" x 216"  
CAP END
- Ⓒ AP23738 HOSE ASSY HWH02HP x 102"  
ROD END - ALWAYS PRESSURIZED - MUST  
BE HIGH PRESSURE HOSES OF EQUAL  
LENGTH AND DIAMETER
- Ⓓ AP24640 HOSE ASSY HWH02HP x 108"  
CAP END - MUST MAINTAIN EQUAL LENGTH  
AND DIAMETER

NOTE: HOSES Ⓐ AND Ⓑ ARE INCLUDED  
WITH THE ROOM EXTENSION MECHANISM.

- Ⓔ AP24818 HOSE ASSY HWH02HP x 86"  
CAP END - MUST MAINTAIN EQUAL LENGTH  
AND DIAMETER
- Ⓕ AP24632 HOSE ASSY HWH02HP x 48"  
ROD END - ALWAYS PRESSURIZED - MUST  
BE HIGH PRESSURE HOSES OF EQUAL  
LENGTH AND DIAMETER
- Ⓖ AP24639 HOSE ASSY HWH02HP x 96"  
CAP END - MUST BE HIGH PRESSURE HOSES  
OF EQUAL LENGTH AND DIAMETER

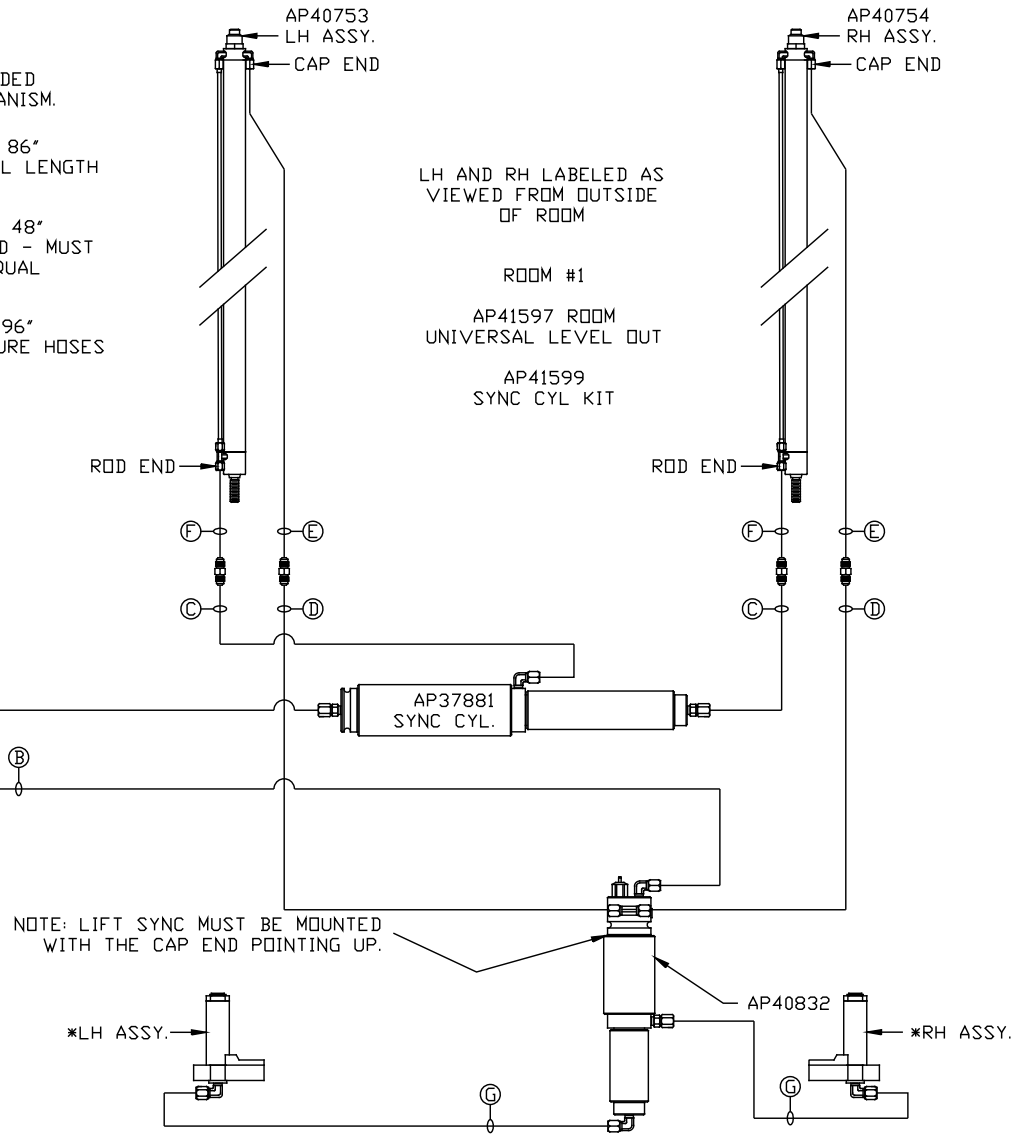
FRONT VIEW  
MANIFOLD-B



SIDE VIEW PUMP/MANIFOLD-AP38396

ORIENTATION OF POWER UNIT IS GLASS WEST

NOTE: INSTALLATION MUST CONFORM TO GOOD SHOP PRACTICES, SAE  
STANDARDS, RVIA STANDARDS, AND OTHER APPLICABLE STANDARDS.



ORIENTATION  
 ← FRONT

NOTE: HOSES (C) AND (F) ARE INCLUDED WITH THE ROOM EXTENSION MECHANISM

(A) AP5562 HOSE ASSY .25" x 276" ROD END - ALWAYS PRESSURIZED

(B) AP5562 HOSE ASSY .25" x 276" CAP END

(C) AP24642 HOSE ASSY HWH02HP x 120" ROD END - ALWAYS PRESSURIZED - MUST BE HIGH PRESSURE HOSES OF EQUAL LENGTH AND DIAMETER

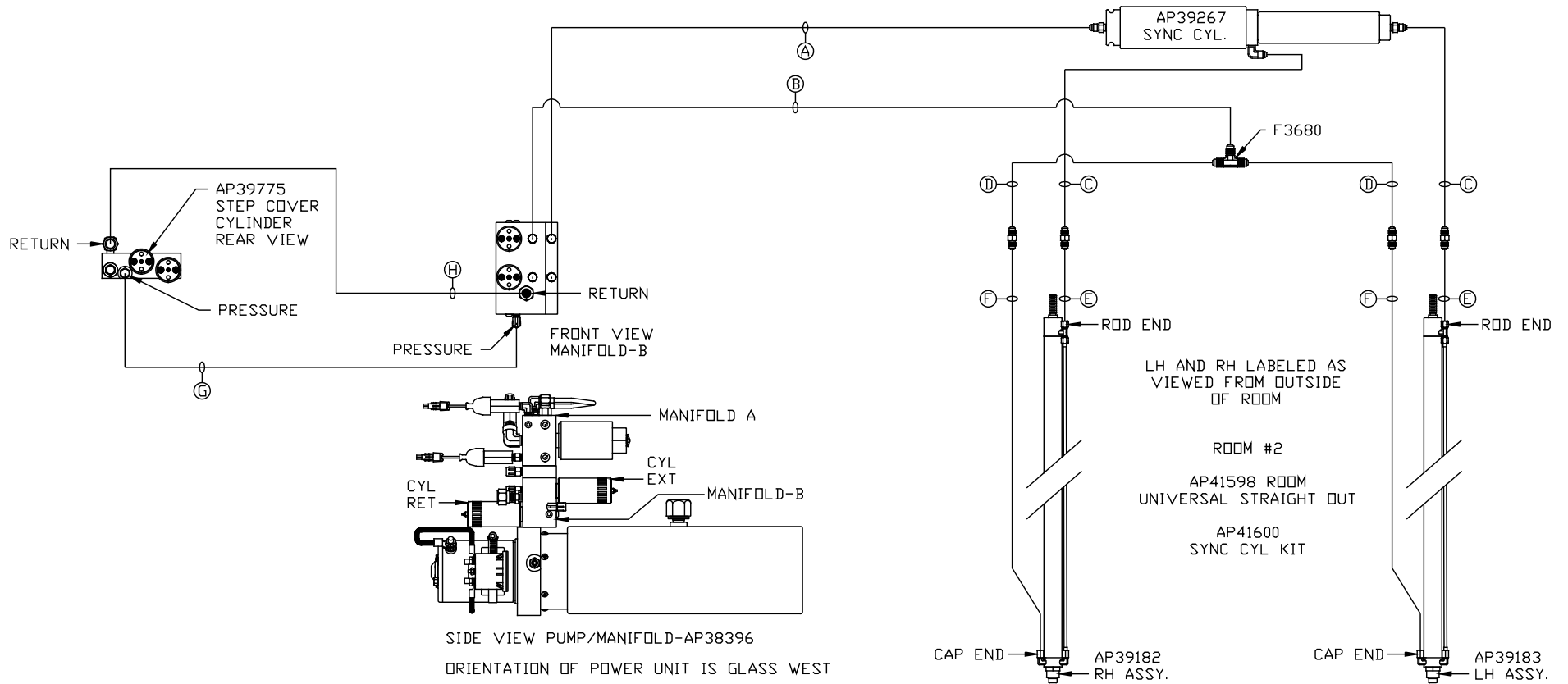
(D) AP24644 HOSE ASSY HWH02HP x 132" CAP END - MUST MAINTAIN EQUAL LENGTH AND DIAMETER

(E) AP24632 HOSE ASSY HWH02HP x 48" ROD END - ALWAYS PRESSURIZED - MUST BE HIGH PRESSURE HOSES OF EQUAL LENGTH AND DIAMETER

(F) AP24818 HOSE ASSY HWH02HP x 86" CAP END - MUST MAINTAIN EQUAL LENGTH AND DIAMETER

(G) .25" ID HOSE PRESSURE

(H) .5" ID TUBING RETURN



NOTE: INSTALLATION MUST CONFORM TO GOOD SHOP PRACTICES, SAE STANDARDS, RVIA STANDARDS, AND OTHER APPLICABLE STANDARDS.

MP70004 D/D  
 01MAY08