

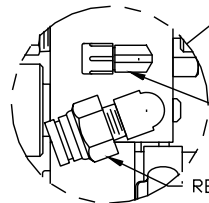
ORIENTATION
← FRONT

TOP VIEW
AP43629
RIGHT FRONT

CAP END
ROD END

TOP VIEW
AP43629
LEFT FRONT

CAP END
ROD END



PRESSURE PORT FOR REMOTE MANIFOLD

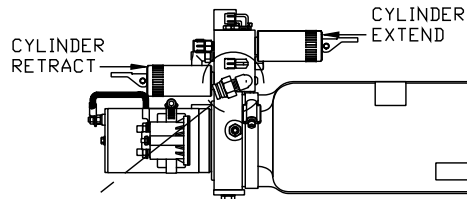
RETURN PORT FOR REMOTE MANIFOLD

- Ⓐ AP5965 HOSE ASSY .25" x 180"
ROD END - ALWAYS PRESSURIZED
- Ⓑ AP4162 HOSE ASSY .25" x 192"
CAP END
- Ⓒ AP24636 HOSE ASSY HWH02HP x 84"
ROD END - ALWAYS PRESSURIZED
HOSES MUST BE HIGH PRESSURE
HOSES OF EQUAL LENGTH AND DIAMETER
- Ⓓ AP24639 HOSE ASSY HWH02HP x 96"
CAP END - HOSES MUST MAINTAIN
EQUAL LENGTH AND DIAMETER
- Ⓔ AP24632 HOSE ASSY HWH02HP x 48"
ROD END - ALWAYS PRESSURIZED -
MUST BE HIGH PRESSURE HOSES OF
EQUAL LENGTH AND DIAMETER

- ⓕ AP24818 HOSE ASSY HWH02HP x 86"
CAP END - MUST MAINTAIN EQUAL
LENGTH AND DIAMETER
- ⓖ AP1412 HOSE ASSY .25" x 84"
ROD END
- ⓗ AP43249 HOSE ASSY .25/05 x 60"
CAP END
- ⓓ AP4827 HOSE ASSY .25" x 144"
ROD END
- ⓔ AP43250 HOSE ASSY .25/05 x 120"
CAP END

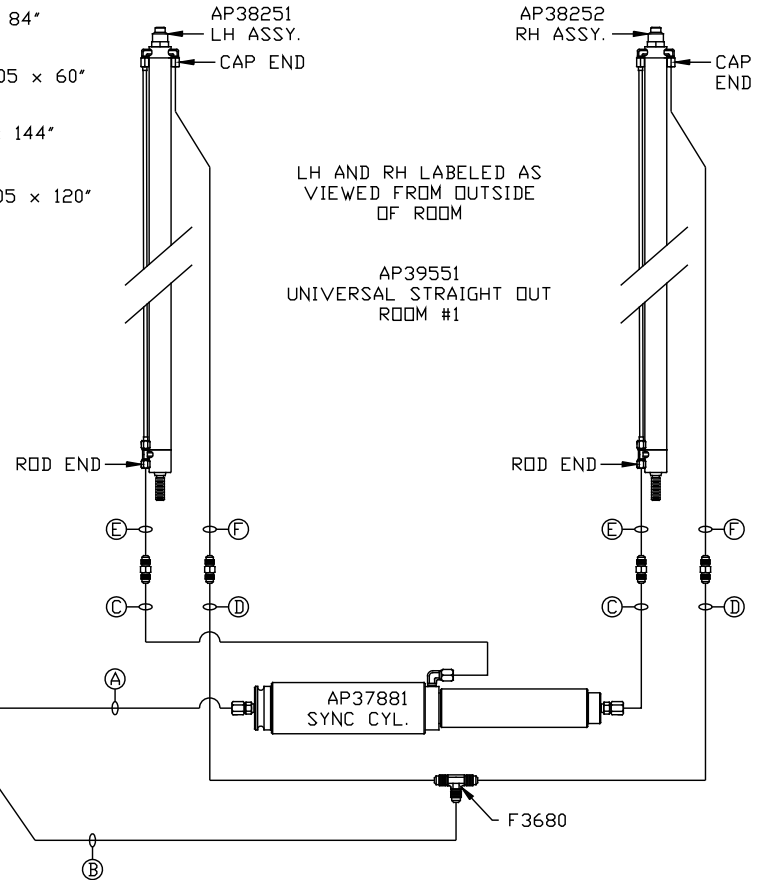
NOTE: HOSES Ⓒ AND Ⓔ ARE INCLUDED
WITH THE ROOM EXTENSION MECHANISM

TOP VIEW-PUMP MANIFOLD



SIDE VIEW PUMP/MANIFOLD-AP47431

LOCATION AND ORIENTATION OF
PUMP/MANIFOLD ASSEMBLY WILL
DIFFER DEPENDING UPON O.E.M.



LH AND RH LABELED AS
VIEWED FROM OUTSIDE
OF ROOM

AP39551
UNIVERSAL STRAIGHT OUT
ROOM #1

NOTE: INSTALLATION MUST CONFORM TO GOOD SHOP PRACTICES, SAE
STANDARDS, RVIA STANDARDS, AND OTHER APPLICABLE STANDARDS.

JACK KIT: AP43628 (2 USED)
CONTROL PACKAGE: AP43792

⚠	26JUL12	WAS AP43557
NO.	DATE	REVISION

THE INFORMATION DISCLOSED ON THIS DRAWING IS CONFIDENTIAL AND MUST NOT BE DISCLOSED OR USED IN ANY MANNER WHICH WILL BE DETRIMENTAL TO THE HWH CORPORATION

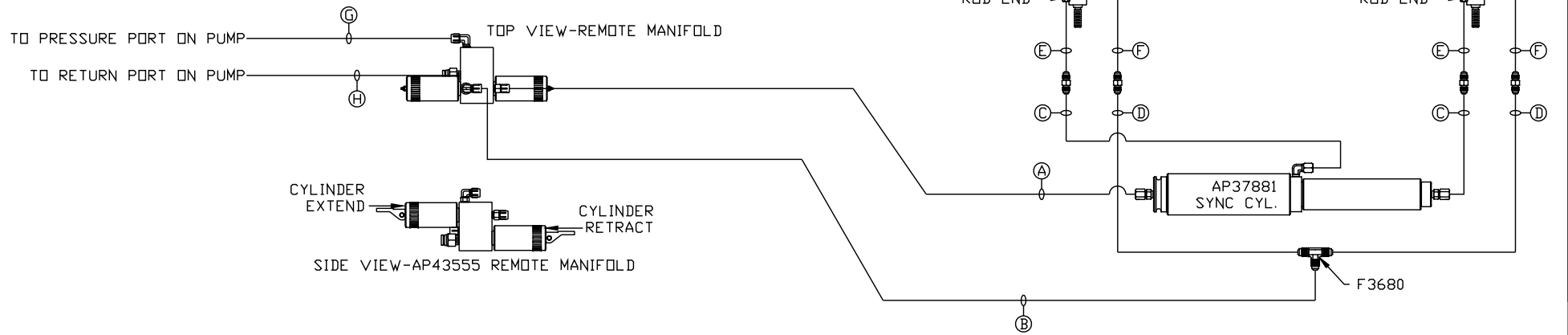
HWH			I-80 EXIT 267 SOUTH RT 1 MOSCOW, IOWA 52760		
SCALE 1:6	DATE 25NOV08	DRAWN BY .			
HYD CONN DIAGRAM					
BLOOMER				DRAWING NUMBER MP70075 A/B	

ORIENTATION

← FRONT

NOTE: HOSES (E) AND (F) ARE INCLUDED WITH THE ROOM EXTENSION MECHANISM

- (A) AP5965 HOSE ASSY .25" x 180"
ROD END - ALWAYS PRESSURIZED
- (B) AP4162 HOSE ASSY .25" x 192"
CAP END
- (C) AP24636 HOSE ASSY HWH02HP x 84"
ROD END - ALWAYS PRESSURIZED
HOSES MUST BE HIGH PRESSURE
HOSES OF EQUAL LENGTH AND DIAMETER
- (D) AP24639 HOSE ASSY HWH02HP x 96"
CAP END - HOSES MUST MAINTAIN
EQUAL LENGTH AND DIAMETER
- (E) AP24632 HOSE ASSY HWH02HP x 48"
ROD END - ALWAYS PRESSURIZED -
MUST BE HIGH PRESSURE HOSES OF
EQUAL LENGTH AND DIAMETER
- (F) AP24818 HOSE ASSY HWH02HP x 86"
CAP END - MUST MAINTAIN EQUAL
LENGTH AND DIAMETER
- (G) AP4060 HOSE ASSY .25" x 24"
- (H) M402375 3/8 OD TUBING



NOTE: INSTALLATION MUST CONFORM TO GOOD SHOP PRACTICES, SAE STANDARDS, RVIA STANDARDS, AND OTHER APPLICABLE STANDARDS.

MP70075 B/B
25NOV08