

ORIENTATION
← FRONT

TOP VIEW
AP43629
RIGHT FRONT

CAP END
ROD END

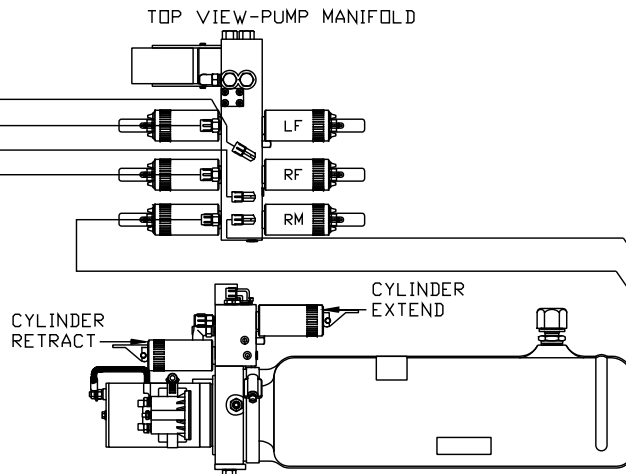
TOP VIEW
AP43629
LEFT FRONT

CAP END
ROD END

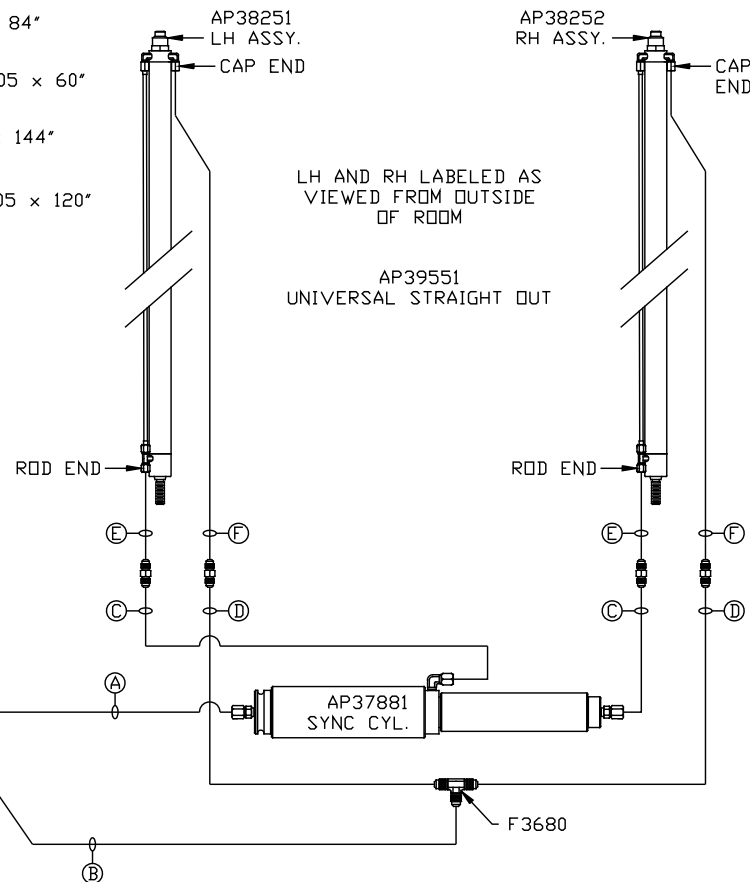
- Ⓐ AP5965 HOSE ASSY .25" x 180"
ROD END - ALWAYS PRESSURIZED
- Ⓑ AP4162 HOSE ASSY .25" x 192"
CAP END
- Ⓒ AP24636 HOSE ASSY HWH02HP x 84"
ROD END - ALWAYS PRESSURIZED
HOSES MUST BE HIGH PRESSURE
HOSES OF EQUAL LENGTH AND DIAMETER
- Ⓓ AP24639 HOSE ASSY HWH02HP x 96"
CAP END - HOSES MUST MAINTAIN
EQUAL LENGTH AND DIAMETER
- Ⓔ AP24632 HOSE ASSY HWH02HP x 48"
ROD END - ALWAYS PRESSURIZED -
MUST BE HIGH PRESSURE HOSES OF
EQUAL LENGTH AND DIAMETER

- ⓕ AP24818 HOSE ASSY HWH02HP x 86"
CAP END - MUST MAINTAIN EQUAL
LENGTH AND DIAMETER
- ⓖ AP1412 HOSE ASSY .25" x 84"
ROD END
- ⓗ AP43249 HOSE ASSY .25/05 x 60"
CAP END
- ⓓ AP4827 HOSE ASSY .25" x 144"
ROD END
- ⓔ AP43250 HOSE ASSY .25/05 x 120"
CAP END

NOTE: HOSES Ⓒ AND Ⓓ ARE INCLUDED
WITH THE ROOM EXTENSION MECHANISM



SIDE VIEW PUMP/MANIFOLD-AP49275 ⚠
LOCATION AND ORIENTATION OF
PUMP/MANIFOLD ASSEMBLY WILL
DIFFER DEPENDING UPON O.E.M.



LH AND RH LABELED AS
VIEWED FROM OUTSIDE
OF ROOM

AP39551
UNIVERSAL STRAIGHT OUT

HWH I-80 EXIT 267 SOUTH
RT 1 MOSCOW, IOWA 52760

SCALE 1:6 DATE 25NOV08 DRAWN BY .

NO.	DATE	REVISION
⚠	26JUL12	WAS AP42486

HYD CONN DIAGRAM

NOTE: INSTALLATION MUST CONFORM TO GOOD SHOP PRACTICES, SAE STANDARDS, RVIA STANDARDS, AND OTHER APPLICABLE STANDARDS.

JACK KIT: AP43628 (2 USED)
CONTROL PACKAGE: AP43793

THE INFORMATION DISCLOSED ON THIS DRAWING IS CONFIDENTIAL AND MUST NOT BE DISCLOSED OR USED IN ANY MANNER WHICH WILL BE DETRIMENTAL TO THE HWH CORPORATION

BLOOMER

DRAWING NUMBER
MP70076