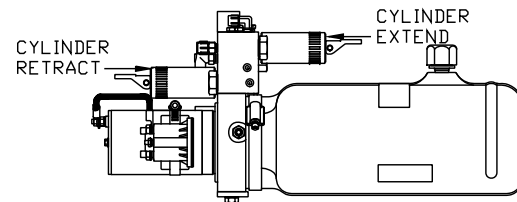
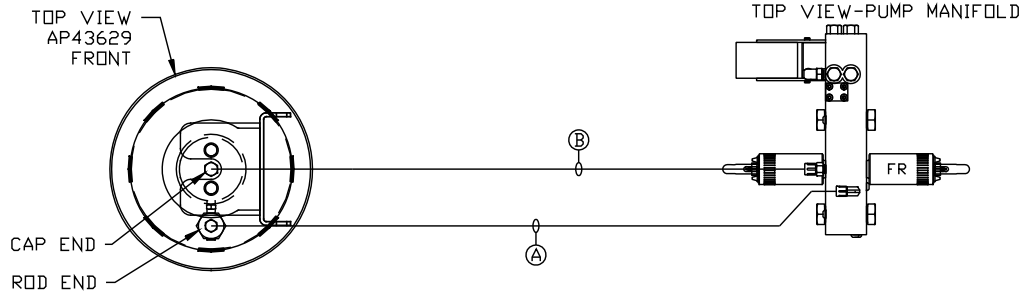


ORIENTATION  
 ← FRONT

Ⓐ AP1412 HOSE ASSY .25" x 84"  
 ROD END

Ⓑ AP43249 HOSE ASSY .25/05 x 60"  
 CAP END



SIDE VIEW PUMP/MANIFOLD-AP44523 ⚠

LOCATION AND ORIENTATION OF  
 PUMP/MANIFOLD ASSEMBLY WILL  
 DIFFER DEPENDING UPON O.E.M.

			HWH	I-80 EXIT 267 SOUTH
				RT 1 MOSCOW, IOWA 52760
			SCALE 1:6	DATE 25NOV08
				DRAWN BY .
⚠	26JUL12	WAS AP43556	HYD CONN DIAGRAM	
NO.	DATE	REVISION		
NOTE: INSTALLATION MUST CONFORM TO GOOD SHOP PRACTICES, SAE STANDARDS, RVIA STANDARDS, AND OTHER APPLICABLE STANDARDS.			DRAWING NUMBER	
JACK KIT: AP43628 (1 USED) CONTROL PACKAGE: AP43794			BLOOMER	
THE INFORMATION DISCLOSED ON THIS DRAWING IS CONFIDENTIAL AND MUST NOT BE DISCLOSED OR USED IN ANY MANNER WHICH WILL BE DETRIMENTAL TO THE HWH CORPORATION			MP70077	