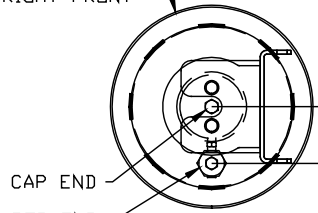
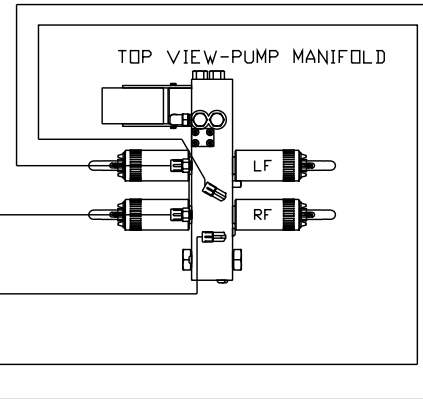


ORIENTATION
← FRONT

TOP VIEW
AP43629
RIGHT FRONT



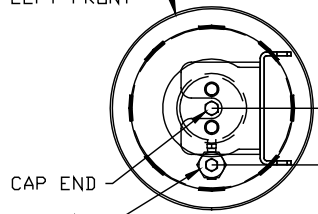
CAP END
ROD END



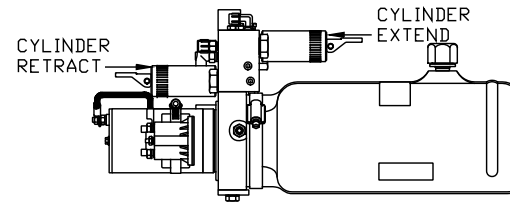
TOP VIEW-PUMP MANIFOLD

- Ⓐ AP1412 HOSE ASSY .25" x 84" ROD END
- Ⓑ AP43249 HOSE ASSY .25/05 x 60" CAP END
- Ⓒ AP4827 HOSE ASSY .25" x 144" ROD END
- Ⓓ AP43250 HOSE ASSY .25/05 x 120" CAP END

TOP VIEW
AP43629
LEFT FRONT



CAP END
ROD END



CYLINDER
RETRACT

CYLINDER
EXTEND

SIDE VIEW PUMP/MANIFOLD-AP44197 ⚠

LOCATION AND ORIENTATION OF
PUMP/MANIFOLD ASSEMBLY WILL
DIFFER DEPENDING UPON O.E.M.

NOTE: INSTALLATION MUST CONFORM TO GOOD SHOP PRACTICES, SAE STANDARDS, RVIA STANDARDS, AND OTHER APPLICABLE STANDARDS.

JACK KIT: AP43628 (2 USED)
CONTROL PACKAGE: AP43803

⚠	26JUL12	WAS AP43094
NO.	DATE	REVISION

HWH I-80 EXIT 267 SOUTH
RT 1 MOSCOW, IOWA 52760

SCALE 1:6 DATE 25NOV08 DRAWN BY .

HYD CONN DIAGRAM

BLOOMER

DRAWING NUMBER
MP70079

THE INFORMATION DISCLOSED ON THIS DRAWING IS CONFIDENTIAL AND MUST NOT BE DISCLOSED OR USED IN ANY MANNER WHICH WILL BE DETRIMENTAL TO THE HWH CORPORATION