

NOTE: CROSS TIE REQUIRED FOR FRONT AND REAR JACKS

- Ⓐ AP3314 HOSE ASSY .25" x 48"
- Ⓑ AP6116 HOSE ASSY .25" x 240"
- Ⓒ AP5216 HOSE ASSY .25" x 312"
- Ⓓ AP4163 HOSE ASSY .25" x 360"

SIDE VIEW PUMP/MANIFOLD-AP36775

LOCATION AND ORIENTATION OF PUMP/MANIFOLD ASSEMBLY WILL DIFFER DEPENDING UPON O.E.M.

NOTE: INSTALLATION MUST CONFORM TO GOOD SHOP PRACTICES, SAE STANDARDS, RVIA STANDARDS, AND OTHER APPLICABLE STANDARDS.

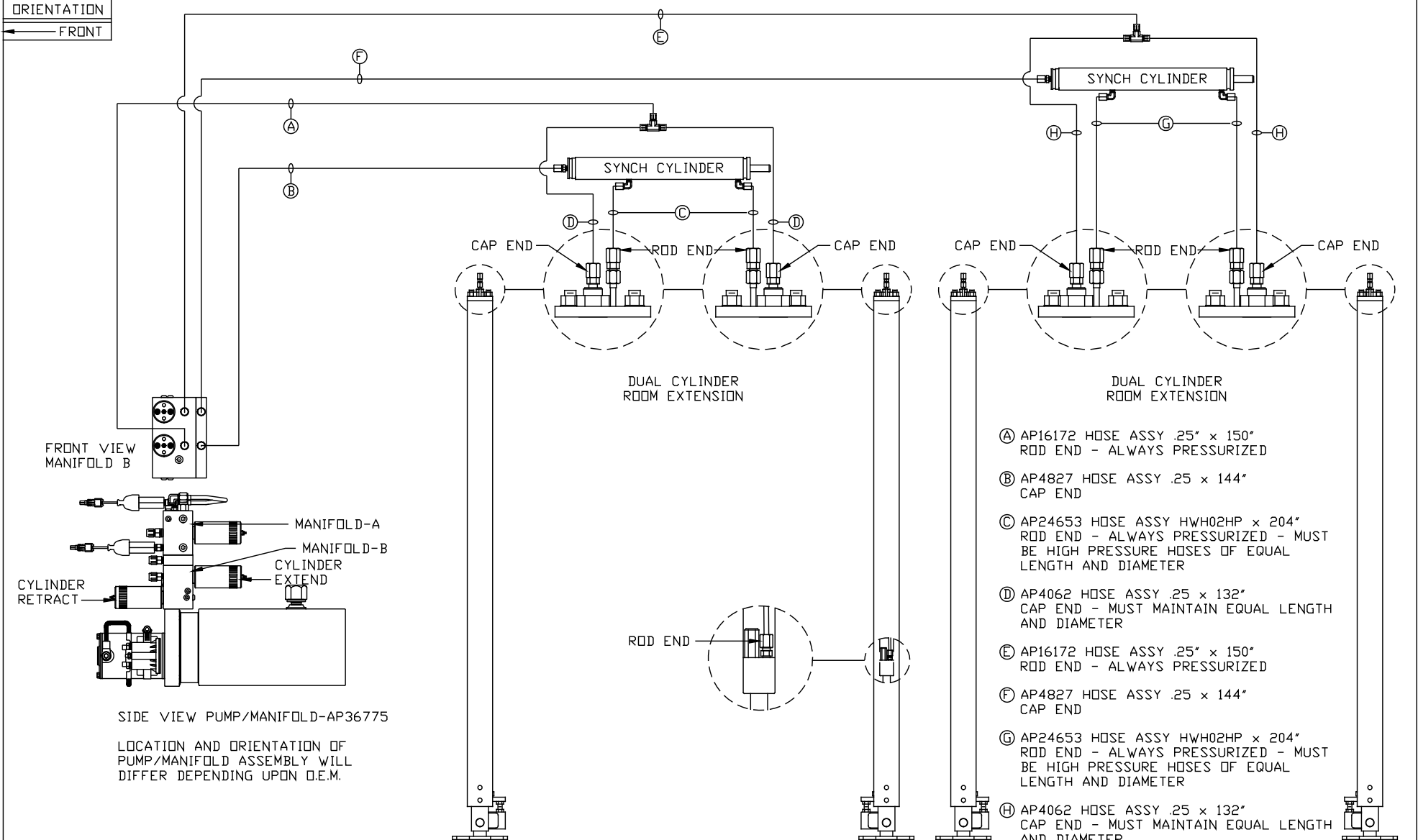
HOSE KIT 2 ROOM: AP41202
LEVELING SYSTEM: AP44045

⚠	30JUN12	WAS AP35344 & AP31701
NO.	DATE	REVISION

THE INFORMATION DISCLOSED ON THIS DRAWING IS CONFIDENTIAL AND MUST NOT BE DISCLOSED OR USED IN ANY MANNER WHICH WILL BE DETRIMENTAL TO THE HWH CORPORATION

HWH			I-80 EXIT 267 SOUTH RT 1 MOSCOW, IOWA 52760		
SCALE 1:6	DATE 15JAN09	DRAWN BY .			
HYD CONN DIAGRAM					
REXHALL				DRAWING NUMBER MP70105 A/B	

ORIENTATION
← FRONT



- Ⓐ AP16172 HOSE ASSY .25" x 150"
ROD END - ALWAYS PRESSURIZED
- Ⓑ AP4827 HOSE ASSY .25 x 144"
CAP END
- Ⓒ AP24653 HOSE ASSY HWH02HP x 204"
ROD END - ALWAYS PRESSURIZED - MUST
BE HIGH PRESSURE HOSES OF EQUAL
LENGTH AND DIAMETER
- Ⓓ AP4062 HOSE ASSY .25 x 132"
CAP END - MUST MAINTAIN EQUAL LENGTH
AND DIAMETER
- Ⓔ AP16172 HOSE ASSY .25" x 150"
ROD END - ALWAYS PRESSURIZED
- Ⓕ AP4827 HOSE ASSY .25 x 144"
CAP END
- Ⓖ AP24653 HOSE ASSY HWH02HP x 204"
ROD END - ALWAYS PRESSURIZED - MUST
BE HIGH PRESSURE HOSES OF EQUAL
LENGTH AND DIAMETER
- Ⓗ AP4062 HOSE ASSY .25 x 132"
CAP END - MUST MAINTAIN EQUAL LENGTH
AND DIAMETER

SIDE VIEW PUMP/MANIFOLD-AP36775

LOCATION AND ORIENTATION OF
PUMP/MANIFOLD ASSEMBLY WILL
DIFFER DEPENDING UPON O.E.M.

NOTE: INSTALLATION MUST CONFORM TO GOOD SHOP PRACTICES, SAE
STANDARDS, RVIA STANDARDS, AND OTHER APPLICABLE STANDARDS.