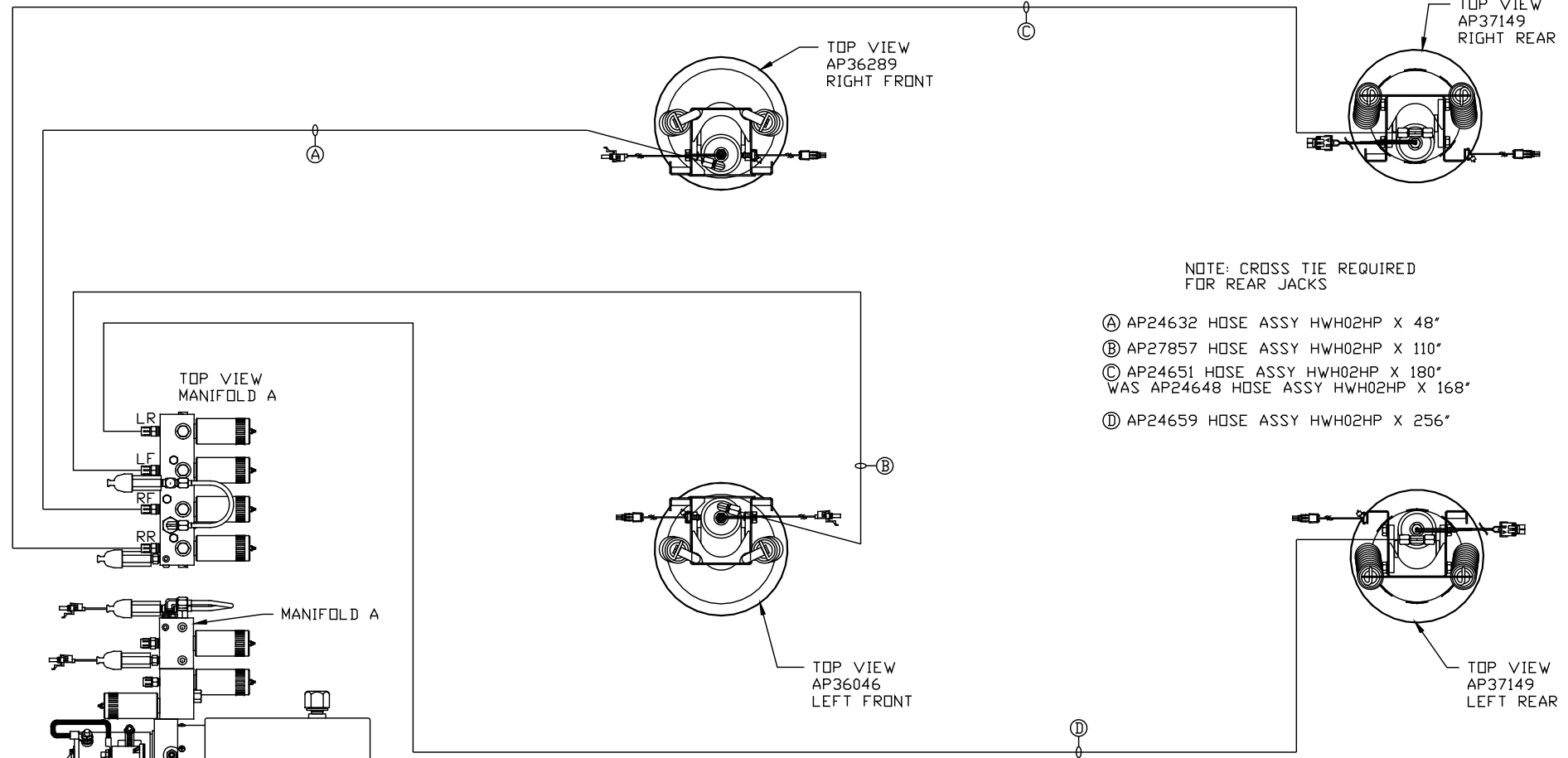


ORIENTATION
 ← FRONT



NOTE: CROSS TIE REQUIRED FOR REAR JACKS

- Ⓐ AP24632 HOSE ASSY HWH02HP X 48"
- Ⓑ AP27857 HOSE ASSY HWH02HP X 110"
- Ⓒ AP24651 HOSE ASSY HWH02HP X 180"
WAS AP24648 HOSE ASSY HWH02HP X 168"
- Ⓓ AP24659 HOSE ASSY HWH02HP X 256"

TOP VIEW
 MANIFOLD A

MANIFOLD A

TOP VIEW
 AP36289
 RIGHT FRONT

TOP VIEW
 AP37149
 RIGHT REAR

TOP VIEW
 AP36046
 LEFT FRONT

TOP VIEW
 AP37149
 LEFT REAR

SIDE VIEW PUMP/MANIFOLD-AP32408

LOCATION AND ORIENTATION OF PUMP/MANIFOLD ASSEMBLY WILL DIFFER DEPENDING UPON O.E.M.

NOTE: INSTALLATION MUST CONFORM TO GOOD SHOP PRACTICES, SAE STANDARDS, RVIA STANDARDS, AND OTHER APPLICABLE STANDARDS.

LEVELING SYSTEM: AP46104

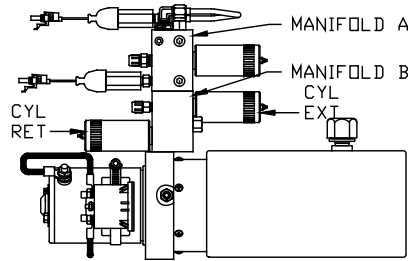
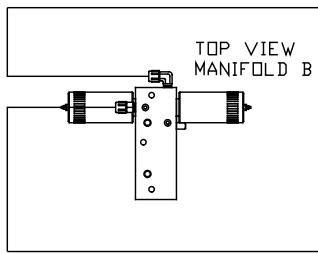
1	31JUL12	UPDATED HOSES
NO.	DATE	REVISION

THE INFORMATION DISCLOSED ON THIS DRAWING IS CONFIDENTIAL AND MUST NOT BE DISCLOSED OR USED IN ANY MANNER WHICH WILL BE DETRIMENTAL TO THE HWH CORPORATION

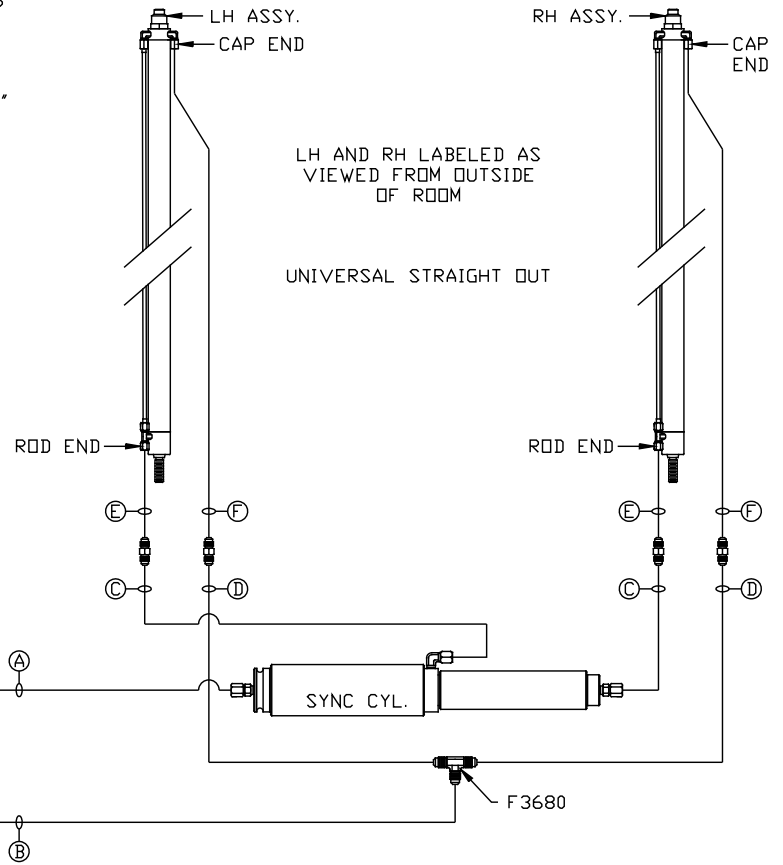
HWH			I-80 EXIT 267 SOUTH RT 1 MOSCOW, IOWA 52760		
SCALE 1:6	DATE 21MAY10	DRAWN BY .			
HYD CONN DIAGRAM					
COACH HOUSE				DRAWING NUMBER MP70249 A/B	

NOTE: HOSES (C) AND (F) ARE INCLUDED WITH THE ROOM EXTENSION MECHANISM

- (A) .25 ID HOSE
ROD END - ALWAYS PRESSURIZED
- (B) .25 ID HOSE
CAP END
- (C) .125 ID HP HOSE
ROD END - ALWAYS PRESSURIZED
HOSES MUST BE HIGH PRESSURE
HOSES OF EQUAL LENGTH AND DIAMETER
- (D) .25 ID HOSE
CAP END - HOSES MUST MAINTAIN
EQUAL LENGTH AND DIAMETER
- (E) AP24632 HOSE ASSY HWH02HP x 48"
ROD END - ALWAYS PRESSURIZED -
MUST BE HIGH PRESSURE HOSES OF
EQUAL LENGTH AND DIAMETER
- (F) AP24818 HOSE ASSY HWH02HP x 86"
CAP END - MUST MAINTAIN EQUAL
LENGTH AND DIAMETER



SIDE VIEW PUMP/MANIFOLD-AP32408
LOCATION AND ORIENTATION OF
PUMP/MANIFOLD ASSEMBLY WILL
DIFFER DEPENDING UPON O.E.M.



NOTE: INSTALLATION MUST CONFORM TO GOOD SHOP PRACTICES, SAE STANDARDS, RVIA STANDARDS, AND OTHER APPLICABLE STANDARDS.

MP70249 B/B
21MAY10