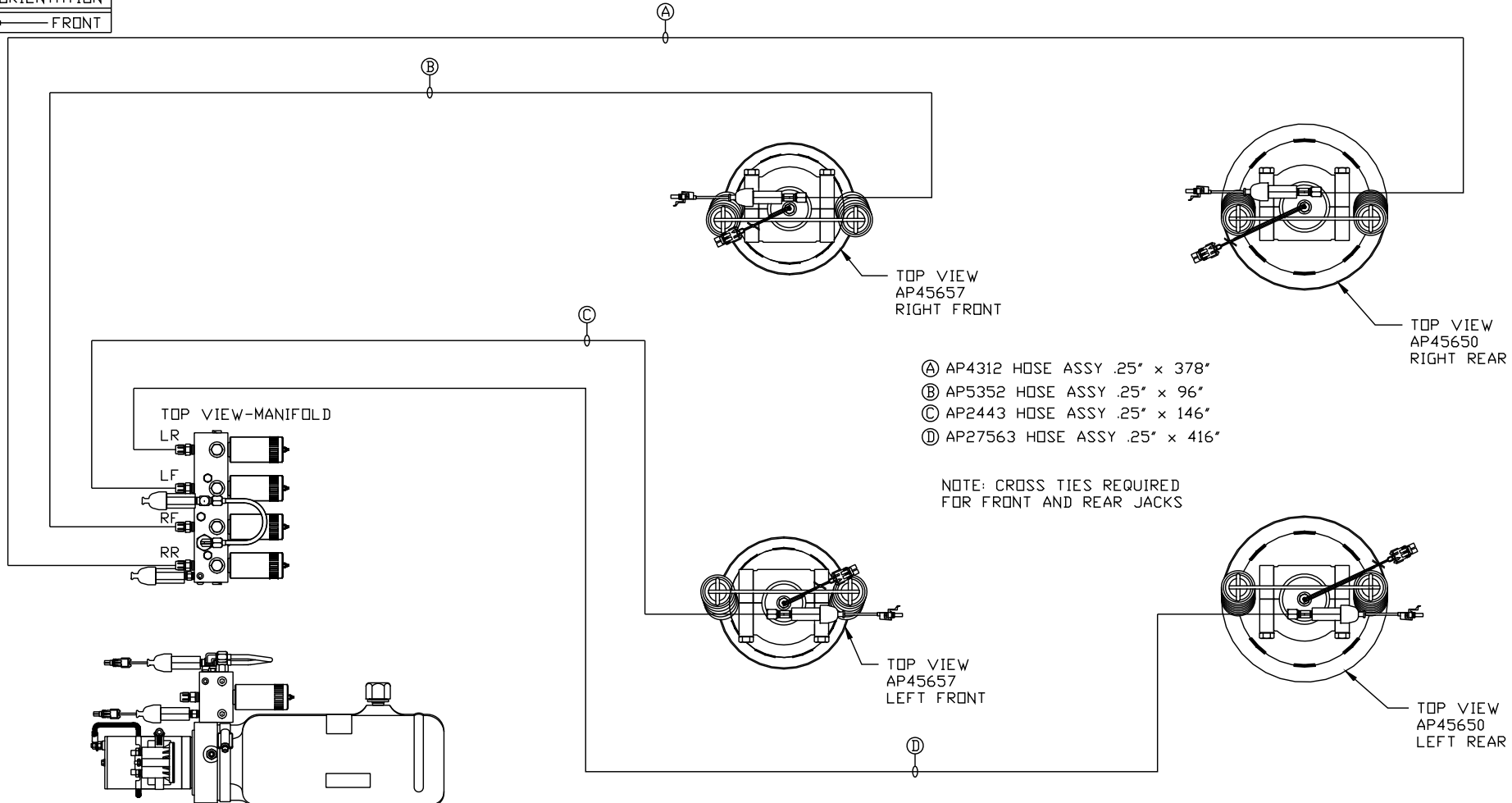


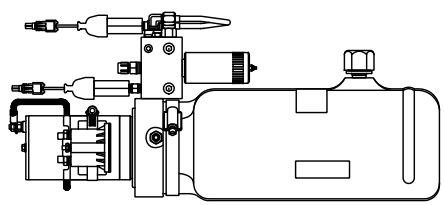
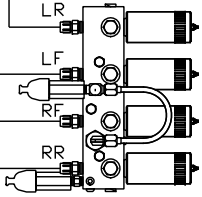
ORIENTATION
← FRONT



- Ⓐ AP4312 HOSE ASSY .25" x 378"
- Ⓑ AP5352 HOSE ASSY .25" x 96"
- Ⓒ AP2443 HOSE ASSY .25" x 146"
- Ⓓ AP27563 HOSE ASSY .25" x 416"

NOTE: CROSS TIES REQUIRED FOR FRONT AND REAR JACKS

TOP VIEW-MANIFOLD



SIDE VIEW PWR/UNIT-AP46675 ⚠

LOCATION AND ORIENTATION OF PUMP/MANIFOLD ASSEMBLY WILL DIFFER DEPENDING UPON O.E.M.

NOTE: INSTALLATION MUST CONFORM TO GOOD SHOP PRACTICES, SAE STANDARDS, RVIA STANDARDS, AND OTHER APPLICABLE STANDARDS.

LEVELING SYSTEM: AP46234

1	31JUL12	WAS AP46395, ADDED HOSES
NO.	DATE	REVISION
THE INFORMATION DISCLOSED ON THIS DRAWING IS CONFIDENTIAL AND MUST NOT BE DISCLOSED OR USED IN ANY MANNER WHICH WILL BE DETRIMENTAL TO THE HWH CORPORATION		

HWH		I-80 EXIT 267 SOUTH RT 1 MOSCOW, IOWA 52760	
SCALE 1:6	DATE 19APR10	DRAWN BY .	
HYD CONN DIAGRAM			
WINNEBAGO			DRAWING NUMBER MP70256