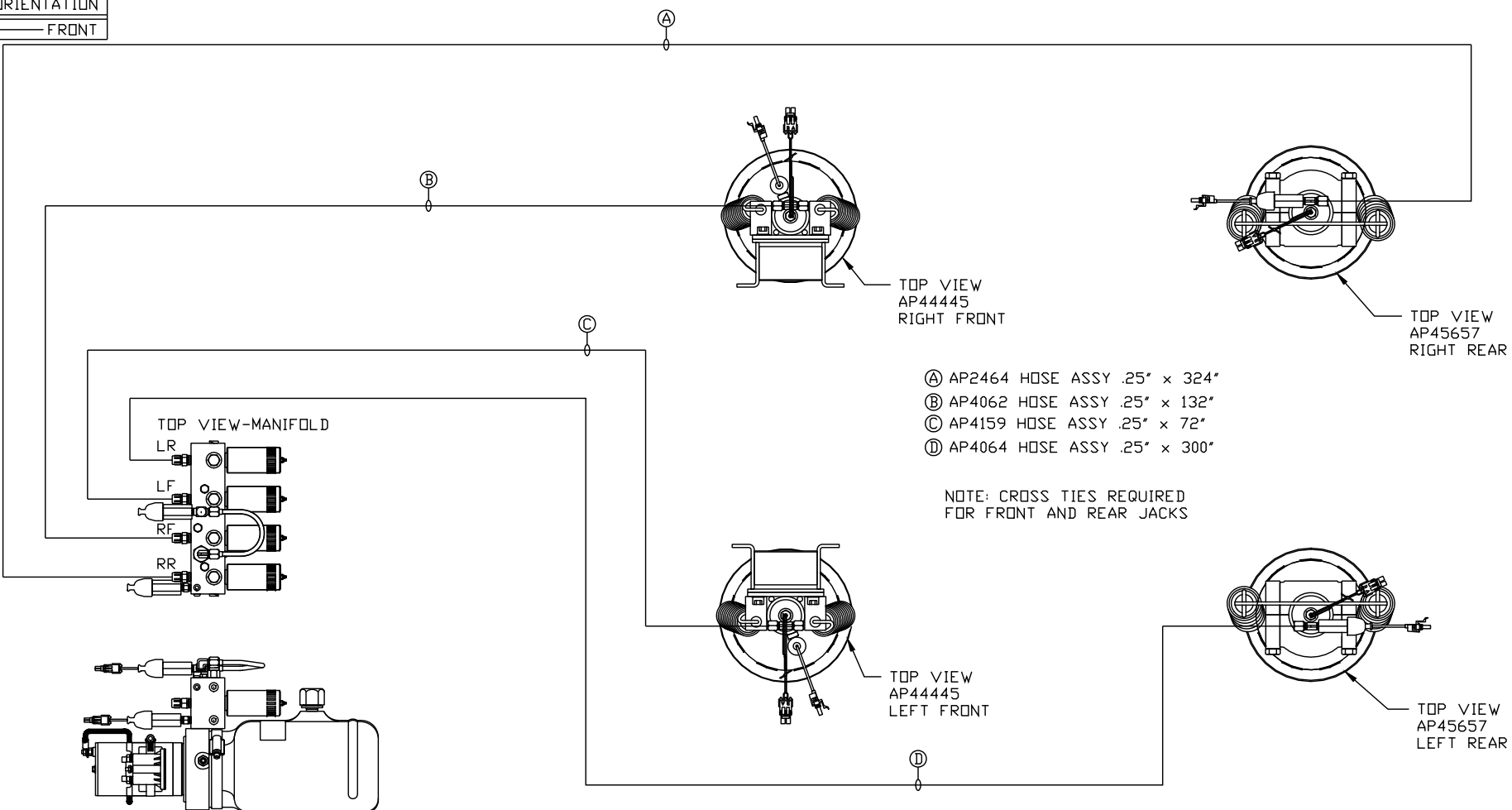


ORIENTATION
← FRONT



TOP VIEW
AP44445
RIGHT FRONT

TOP VIEW
AP45657
RIGHT REAR

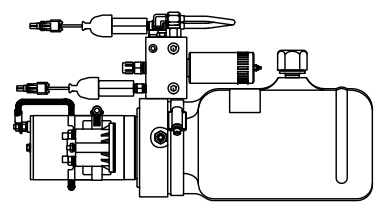
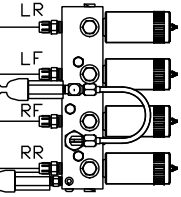
- Ⓐ AP2464 HOSE ASSY .25" x 324"
- Ⓑ AP4062 HOSE ASSY .25" x 132"
- Ⓒ AP4159 HOSE ASSY .25" x 72"
- Ⓓ AP4064 HOSE ASSY .25" x 300"

NOTE: CROSS TIES REQUIRED FOR FRONT AND REAR JACKS

TOP VIEW
AP44445
LEFT FRONT

TOP VIEW
AP45657
LEFT REAR

TOP VIEW-MANIFOLD



SIDE VIEW PWR/UNIT-AP40608

LOCATION AND ORIENTATION OF PUMP/MANIFOLD ASSEMBLY WILL DIFFER DEPENDING UPON O.E.M.

NOTE: INSTALLATION MUST CONFORM TO GOOD SHOP PRACTICES, SAE STANDARDS, RVIA STANDARDS, AND OTHER APPLICABLE STANDARDS.

LEVELING SYSTEM: AP46397

1	31JUL12	ADDED HOSES
NO.	DATE	REVISION
THE INFORMATION DISCLOSED ON THIS DRAWING IS CONFIDENTIAL AND MUST NOT BE DISCLOSED OR USED IN ANY MANNER WHICH WILL BE DETRIMENTAL TO THE HWH CORPORATION		

HWH		I-80 EXIT 267 SOUTH RT 1 MOSCOW, IOWA 52760	
SCALE 1:6	DATE 19APR10	DRAWN BY .	
HYD CONN DIAGRAM			
WINNEBAGO		DRAWING NUMBER MP70261	