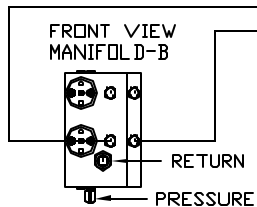


NOTE: INSTALLATION MUST CONFORM TO GOOD SHOP PRACTICES, SAE STANDARDS, RVIA STANDARDS, AND OTHER APPLICABLE STANDARDS.



PUMP/MANIFOLD-AP48999 (NOT SHOWN)

AP48959
UNIVERSAL STRAIGHT OUT HD
ROOM #1

AP49291 LH ASSY.
CAP END

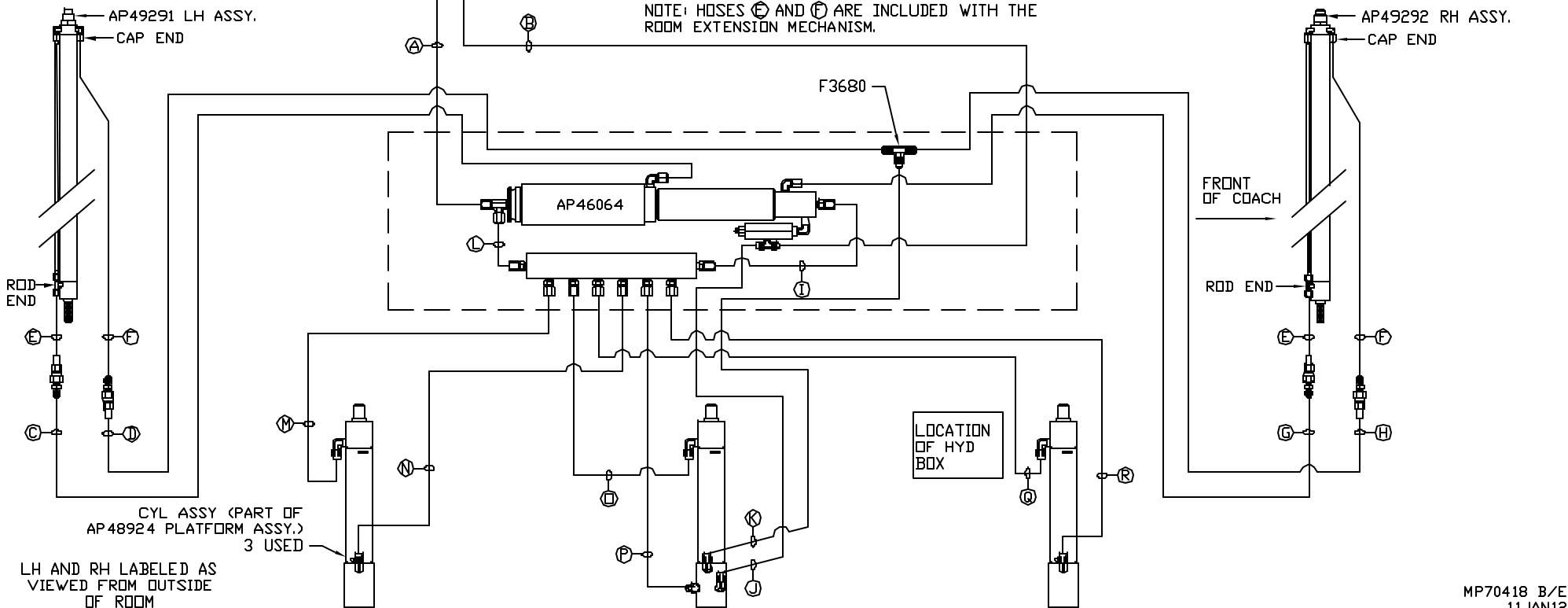
ROD
END

Ⓒ

Ⓓ

CYL ASSY (PART OF
AP48924 PLATFORM ASSY.)
3 USED

LH AND RH LABELED AS
VIEWED FROM OUTSIDE
OF ROOM



Ⓐ AP4062 HOSE ASSY .25' X 132
ROD END - ALWAYS PRESSURIZED

Ⓑ AP4827 HOSE ASSY .25' X 144
CAP END

Ⓒ AP49740 HOSE ASSY 03 X 210
ROD END (ROOM)
ALWAYS PRESSURIZED
HOSES MUST BE HIGH PRESSURE

Ⓓ AP5965 HOSE ASSY .25' X 180
CAP END (ROOM)

Ⓔ AP24632 HOSE ASSY HWH02HP x 48'
ROD END (ROOM)
ALWAYS PRESSURIZED
HOSES MUST BE HIGH PRESSURE

Ⓕ AP24818 HOSE ASSY HWH02HP x 86'
CAP END (ROOM)

NOTE: HOSES Ⓒ AND Ⓕ ARE INCLUDED WITH THE
ROOM EXTENSION MECHANISM.

Ⓖ AP49517 HOSE ASSY 03 X 180
ROD END (ROOM)
ALWAYS PRESSURIZED
HOSES MUST BE HIGH PRESSURE

Ⓗ AP4162 HOSE ASSY .25' X 192
CAP END (ROOM)

Ⓖ AP41194 HOSE ASSY .25' X 28
CAP END

Ⓖ AP49727 HOSE ASSY 03 X 65
CAP END

Ⓖ AP49726 HOSE ASSY 03 X 62
CAP END

Ⓖ AP5212 HOSE ASSY .25' X 15
ROD END
ALWAYS PRESSURIZED

Ⓜ AP49734 HOSE ASSY 03 X 118
ROD END
ALWAYS PRESSURIZED

Ⓝ AP49731 HOSE ASSY 03 X 103
CAP END

Ⓓ AP49729 HOSE ASSY 03 X 71
ROD END
ALWAYS PRESSURIZED

Ⓟ AP49725 HOSE ASSY 03 X 59
CAP END

Ⓖ AP49735 HOSE ASSY 03 X 121
ROD END
ALWAYS PRESSURIZED

Ⓡ AP49732 HOSE ASSY 03 X 104
CAP END

Ⓐ AP7385 HOSE ASSY .25" x 252"
ROD END - ALWAYS PRESSURIZED

Ⓑ AP6216 HOSE ASSY .25" x 264"
CAP END

Ⓒ AP24630 HOSE ASSY HWH02HP x 36"
ROD END - ALWAYS PRESSURIZED

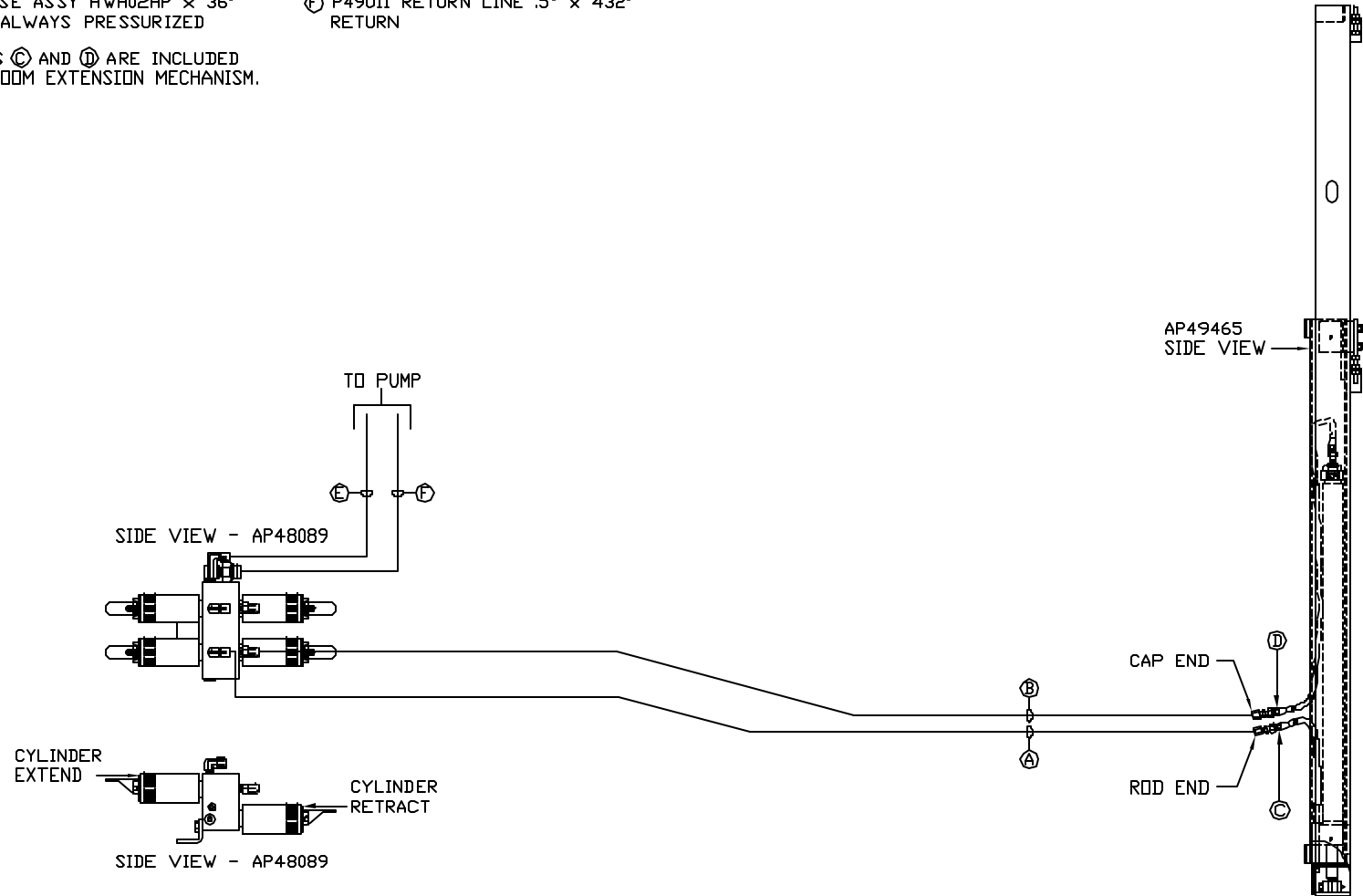
Ⓓ AP24634 HOSE ASSY HWH02HP x 60"
CAP END

Ⓔ AP6117 HOSE ASSY .25" x 432"
PRESSURE

Ⓕ P49011 RETURN LINE .5" x 432"
RETURN

NOTE: HOSES Ⓒ AND Ⓓ ARE INCLUDED
WITH THE ROOM EXTENSION MECHANISM.

ROOM #2
AP49464
BED SLIDE KIT



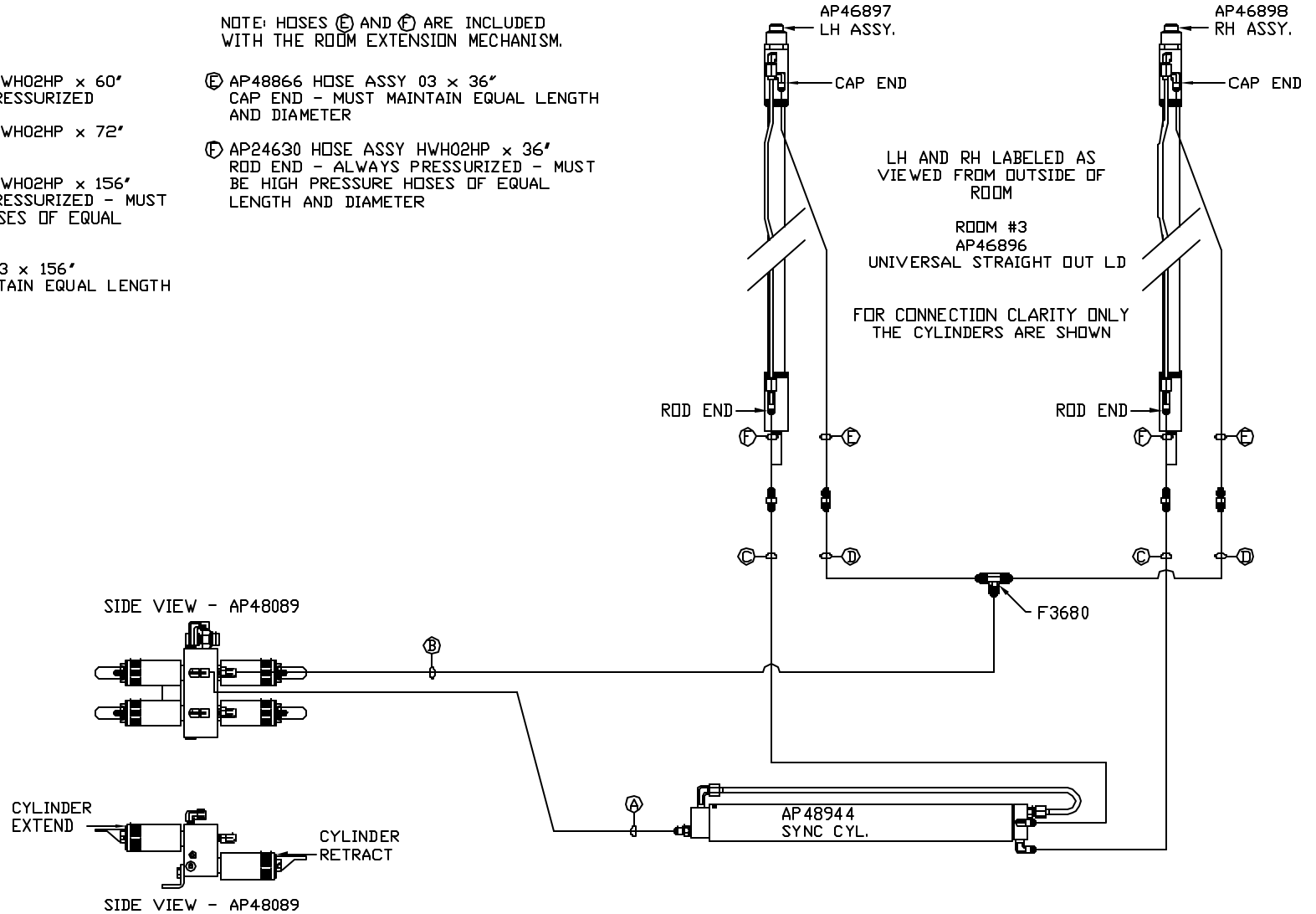
NOTE: INSTALLATION MUST CONFORM TO GOOD SHOP PRACTICES, SAE
STANDARDS, RVIA STANDARDS, AND OTHER APPLICABLE STANDARDS.

MP70418 C/E
12JAN12

NOTE: HOSES (E) AND (F) ARE INCLUDED WITH THE ROOM EXTENSION MECHANISM.

- (A) AP24634 HOSE ASSY HWH02HP x 60'
ROD END - ALWAYS PRESSURIZED
- (B) AP24635 HOSE ASSY HWH02HP x 72'
CAP END
- (C) AP24646 HOSE ASSY HWH02HP x 156'
ROD END - ALWAYS PRESSURIZED - MUST BE HIGH PRESSURE HOSES OF EQUAL LENGTH AND DIAMETER
- (D) AP49246 HOSE ASSY 03 x 156'
CAP END - MUST MAINTAIN EQUAL LENGTH AND DIAMETER

- (E) AP48866 HOSE ASSY 03 x 36"
CAP END - MUST MAINTAIN EQUAL LENGTH AND DIAMETER
- (F) AP24630 HOSE ASSY HWH02HP x 36'
ROD END - ALWAYS PRESSURIZED - MUST BE HIGH PRESSURE HOSES OF EQUAL LENGTH AND DIAMETER



NOTE: INSTALLATION MUST CONFORM TO GOOD SHOP PRACTICES, SAE STANDARDS, RVIA STANDARDS, AND OTHER APPLICABLE STANDARDS.

MP70418 D/E
11APR12

NOTE: INSTALLATION MUST CONFORM TO GOOD SHOP PRACTICES, SAE STANDARDS, RVIA STANDARDS, AND OTHER APPLICABLE STANDARDS.

Ⓐ AP4065 HOSE ASSY .25" X 156
ROD END - ALWAYS PRESSURIZED

Ⓒ AP49738 HOSE ASSY 03 X 168
ROD END (ROOM)
ALWAYS PRESSURIZED
HOSES MUST BE HIGH PRESSURE

Ⓜ AP49734 HOSE ASSY 03 X 118
ROD END
ALWAYS PRESSURIZED

Ⓑ AP6115 HOSE ASSY .25" X 168
CAP END

Ⓜ AP5965 HOSE ASSY .25" X 180
CAP END (ROOM)

Ⓝ AP49731 HOSE ASSY 03 X 103
CAP END

Ⓒ AP49740 HOSE ASSY 03 X 210
ROD END (ROOM)
ALWAYS PRESSURIZED
HOSES MUST BE HIGH PRESSURE

Ⓛ AP41194 HOSE ASSY .25" X 28
CAP END

Ⓞ AP49729 HOSE ASSY 03 X 71
ROD END
ALWAYS PRESSURIZED

Ⓛ AP5965 HOSE ASSY .25" X 180
CAP END (ROOM)

Ⓜ AP49727 HOSE ASSY 03 X 65
CAP END

Ⓟ AP49725 HOSE ASSY 03 X 59
CAP END

Ⓞ AP24632 HOSE ASSY HWH02HP x 48'
ROD END (ROOM)
ALWAYS PRESSURIZED
HOSES MUST BE HIGH PRESSURE

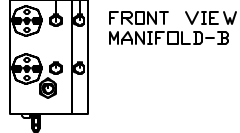
Ⓚ AP49726 HOSE ASSY 03 X 62
CAP END

Ⓞ AP49728 HOSE ASSY 03 X 68
ROD END
ALWAYS PRESSURIZED

Ⓟ AP24818 HOSE ASSY HWH02HP x 86'
CAP END (ROOM)

Ⓛ AP5212 HOSE ASSY .25" X 15
ROD END
ALWAYS PRESSURIZED

Ⓠ AP49724 HOSE ASSY 03 X 51
CAP END

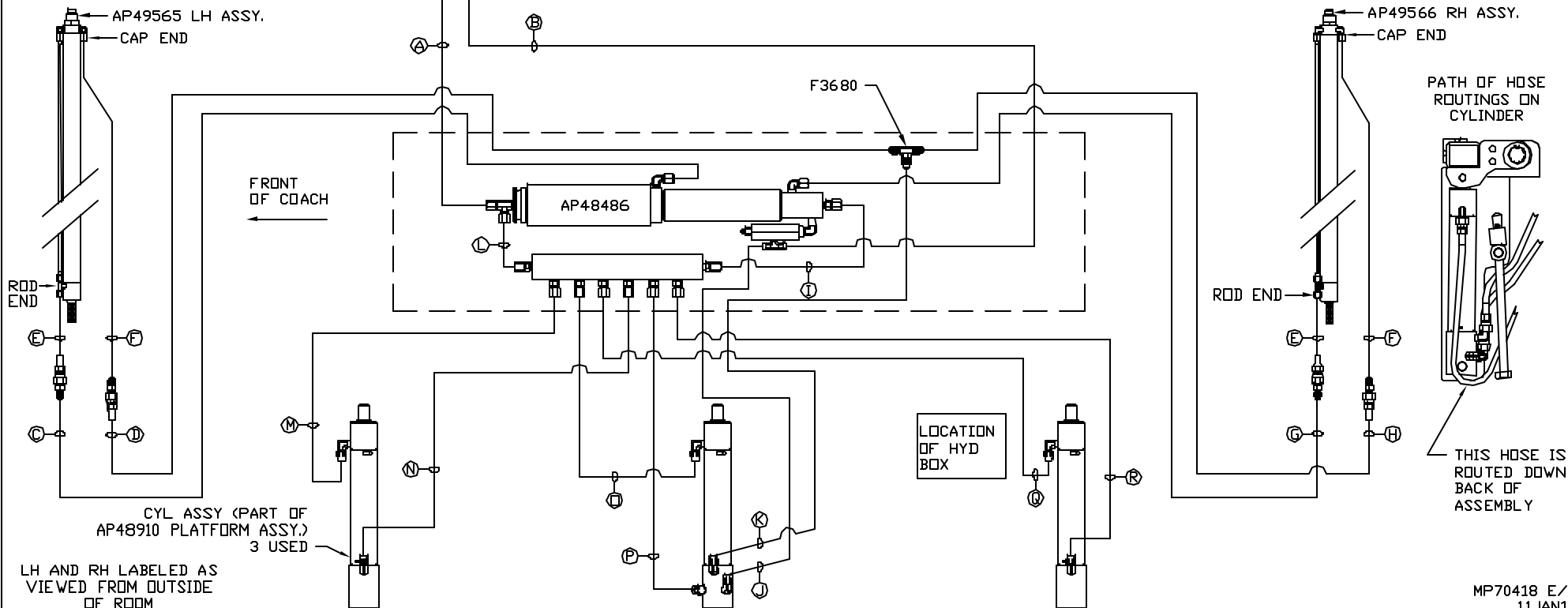


FRONT VIEW
MANIFOLD-B

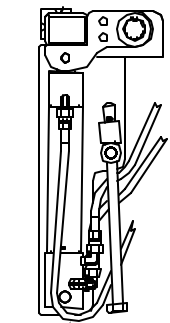
PUMP/MANIFOLD-AP48999 (NOT SHOWN)

NOTE: HOSES Ⓒ AND Ⓟ ARE INCLUDED WITH THE ROOM EXTENSION MECHANISM.

AP48974
UNIVERSAL STRAIGHT OUT HD
ROOM #4



PATH OF HOSE
ROUTINGS ON
CYLINDER



THIS HOSE IS
ROUTED DOWN
BACK OF
ASSEMBLY