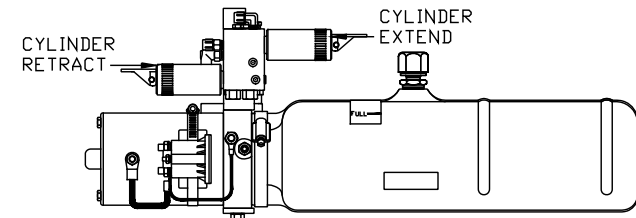
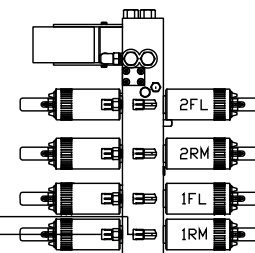


- Ⓐ HOSE ASSY .25"
ROD END - ALWAYS PRESSURIZED
- Ⓑ HOSE ASSY .25"
CAP END
- Ⓒ HOSE ASSY HWH02HP OR 03
ROD END - ALWAYS PRESSURIZED - MUST
BE EQUAL LENGTH AND DIAMETER
- Ⓓ HOSE ASSY .25"
CAP END - MUST MAINTAIN EQUAL LENGTH
AND DIAMETER

TOP VIEW
MANIFOLD



SIDE VIEW PUMP/MANIFOLD-AP50086

LOCATION AND ORIENTATION OF
PUMP/MANIFOLD ASSEMBLY WILL
DIFFER DEPENDING UPON O.E.M.

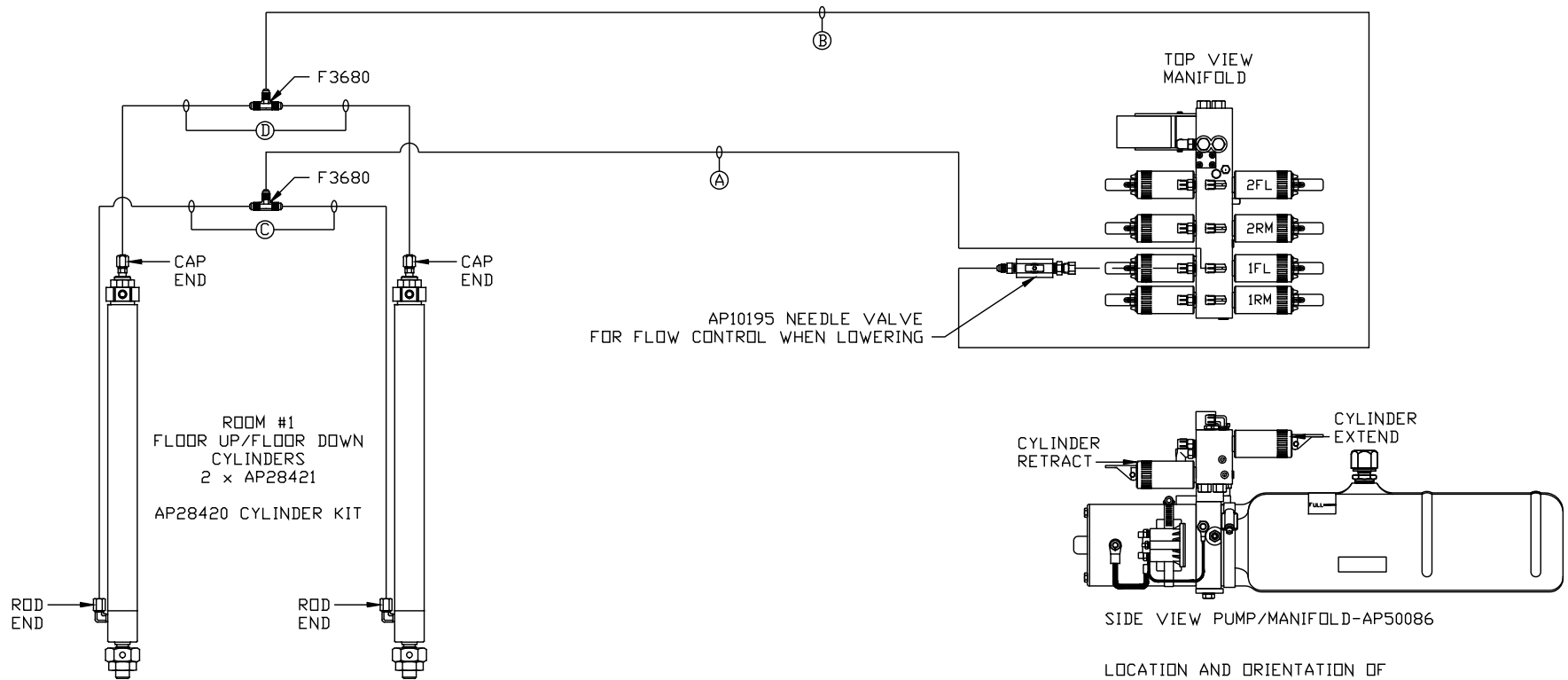
NOTE: INSTALLATION MUST CONFORM TO GOOD SHOP PRACTICES, SAE
STANDARDS, RVIA STANDARDS, AND OTHER APPLICABLE STANDARDS.

CONTROL PKG: AP50103

		HWH I-80 EXIT 267 SOUTH RT 1 MOSCOW, IOWA 52760	
		SCALE 1:6	DATE 04MAY12
		DRAWN BY .	
		HYD CONN DIAGRAM	
NO.	DATE	REVISION	
		WESTERN SHELTER	
		DRAWING NUMBER MP70529 A/D	

THE INFORMATION DISCLOSED ON THIS DRAWING IS CON-
FIDENTIAL AND MUST NOT BE DISCLOSED OR USED IN ANY
MANNER WHICH WILL BE DETRIMENTAL TO THE HWH CORPORATION

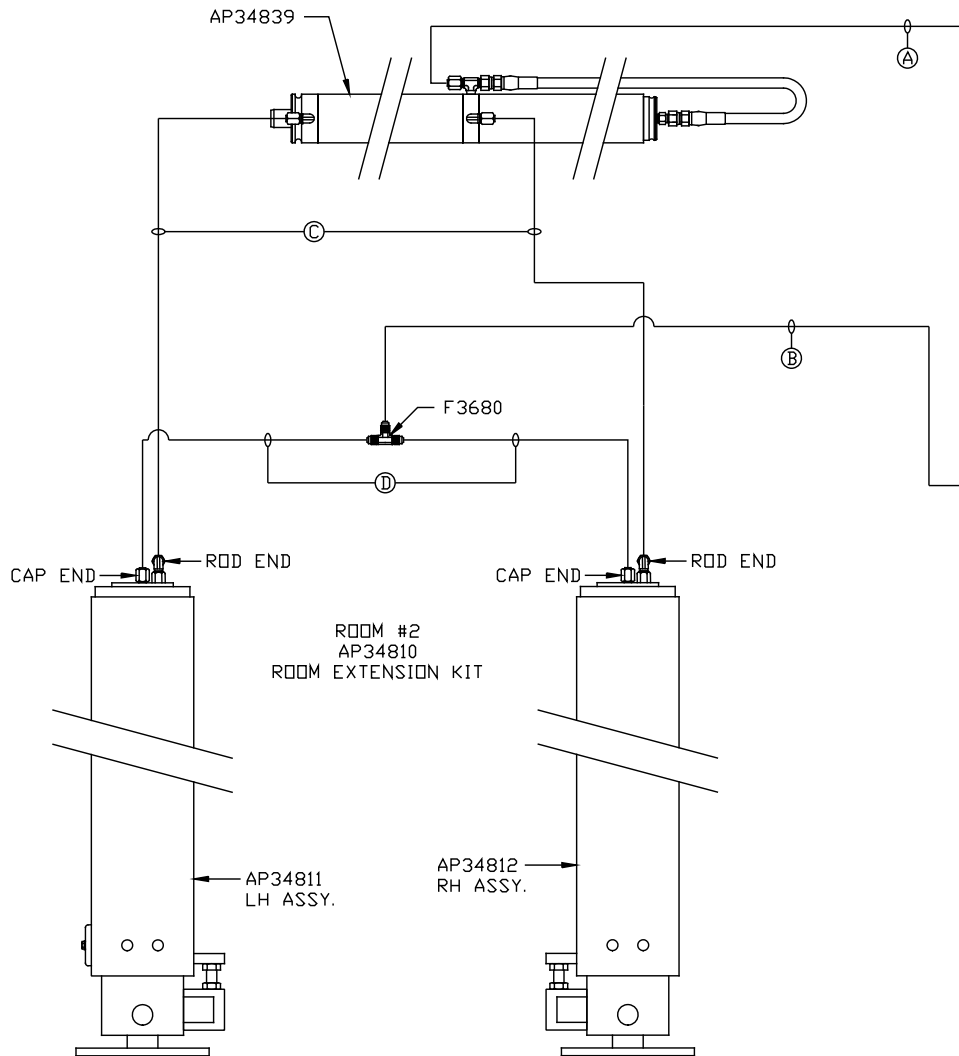
- Ⓐ HOSE ASSY .25"
ROD END - ALWAYS PRESSURIZED
- Ⓑ HOSE ASSY .25"
CAP END
- Ⓒ HOSE ASSY HWH02HP OR 03
ROD END - ALWAYS PRESSURIZED - MUST
BE EQUAL LENGTH AND DIAMETER
- Ⓓ HOSE ASSY .25"
CAP END - MUST MAINTAIN EQUAL LENGTH
AND DIAMETER



LOCATION AND ORIENTATION OF
PUMP/MANIFOLD ASSEMBLY WILL
DIFFER DEPENDING UPON O.E.M.

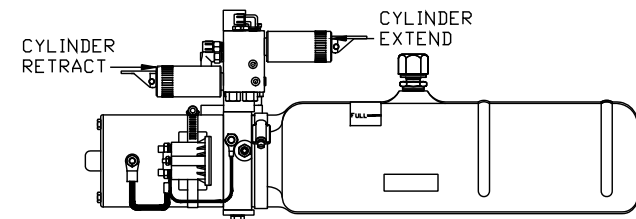
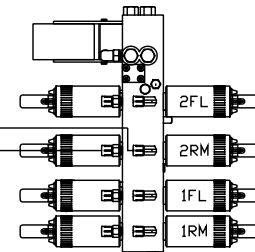
NOTE: INSTALLATION MUST CONFORM TO GOOD SHOP PRACTICES, SAE
STANDARDS, RVIA STANDARDS, AND OTHER APPLICABLE STANDARDS.

MP70529 B/D
04MAY12



- Ⓐ HOSE ASSY .25"
ROD END - ALWAYS PRESSURIZED
- Ⓑ HOSE ASSY .25"
CAP END
- Ⓒ HOSE ASSY HWH02HP OR 03
ROD END - ALWAYS PRESSURIZED - MUST
BE EQUAL LENGTH AND DIAMETER
- Ⓓ HOSE ASSY .25"
CAP END - MUST MAINTAIN EQUAL LENGTH
AND DIAMETER

TOP VIEW
MANIFOLD



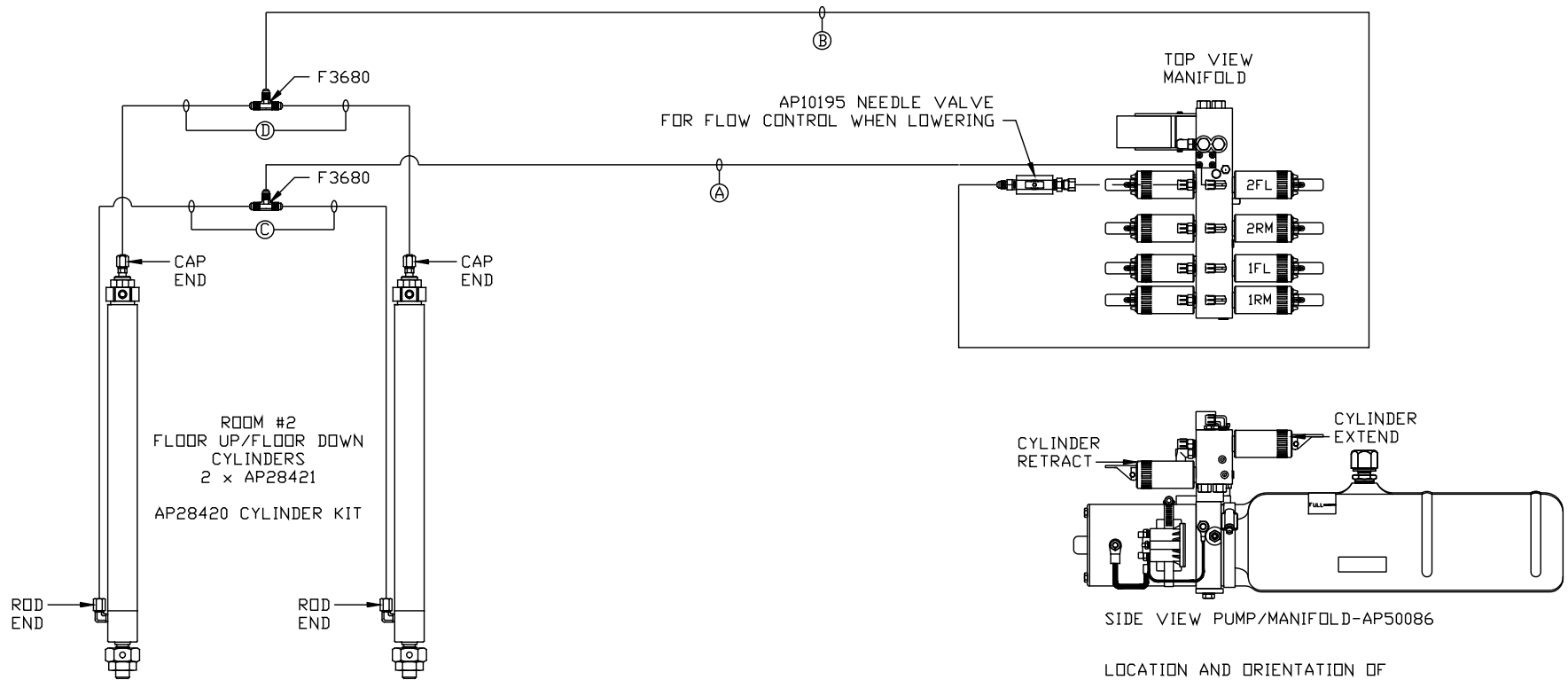
SIDE VIEW PUMP/MANIFOLD-AP50086

LOCATION AND ORIENTATION OF
PUMP/MANIFOLD ASSEMBLY WILL
DIFFER DEPENDING UPON O.E.M.

NOTE: INSTALLATION MUST CONFORM TO GOOD SHOP PRACTICES, SAE
STANDARDS, RVIA STANDARDS, AND OTHER APPLICABLE STANDARDS.

MP70529 C/D
04MAY12

- Ⓐ HOSE ASSY .25"
ROD END - ALWAYS PRESSURIZED
- Ⓑ HOSE ASSY .25"
CAP END
- Ⓒ HOSE ASSY HWH02HP OR 03
ROD END - ALWAYS PRESSURIZED - MUST
BE EQUAL LENGTH AND DIAMETER
- Ⓓ HOSE ASSY .25"
CAP END - MUST MAINTAIN EQUAL LENGTH
AND DIAMETER



LOCATION AND ORIENTATION OF
PUMP/MANIFOLD ASSEMBLY WILL
DIFFER DEPENDING UPON O.E.M.

NOTE: INSTALLATION MUST CONFORM TO GOOD SHOP PRACTICES, SAE
STANDARDS, RVIA STANDARDS, AND OTHER APPLICABLE STANDARDS.

MP70529 D/D
04MAY12