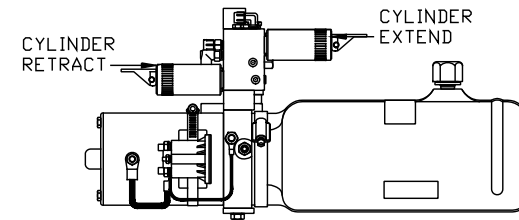
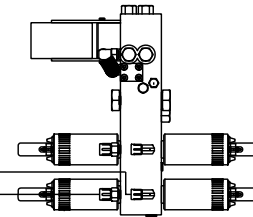


- Ⓐ HOSE ASSY .25"
ROD END - ALWAYS PRESSURIZED
- Ⓑ HOSE ASSY .25"
CAP END
- Ⓒ HOSE ASSY HWH02HP OR 03
ROD END - ALWAYS PRESSURIZED - MUST
BE EQUAL LENGTH AND DIAMETER
- Ⓓ HOSE ASSY .25"
CAP END - MUST MAINTAIN EQUAL LENGTH
AND DIAMETER

TOP VIEW
MANIFOLD



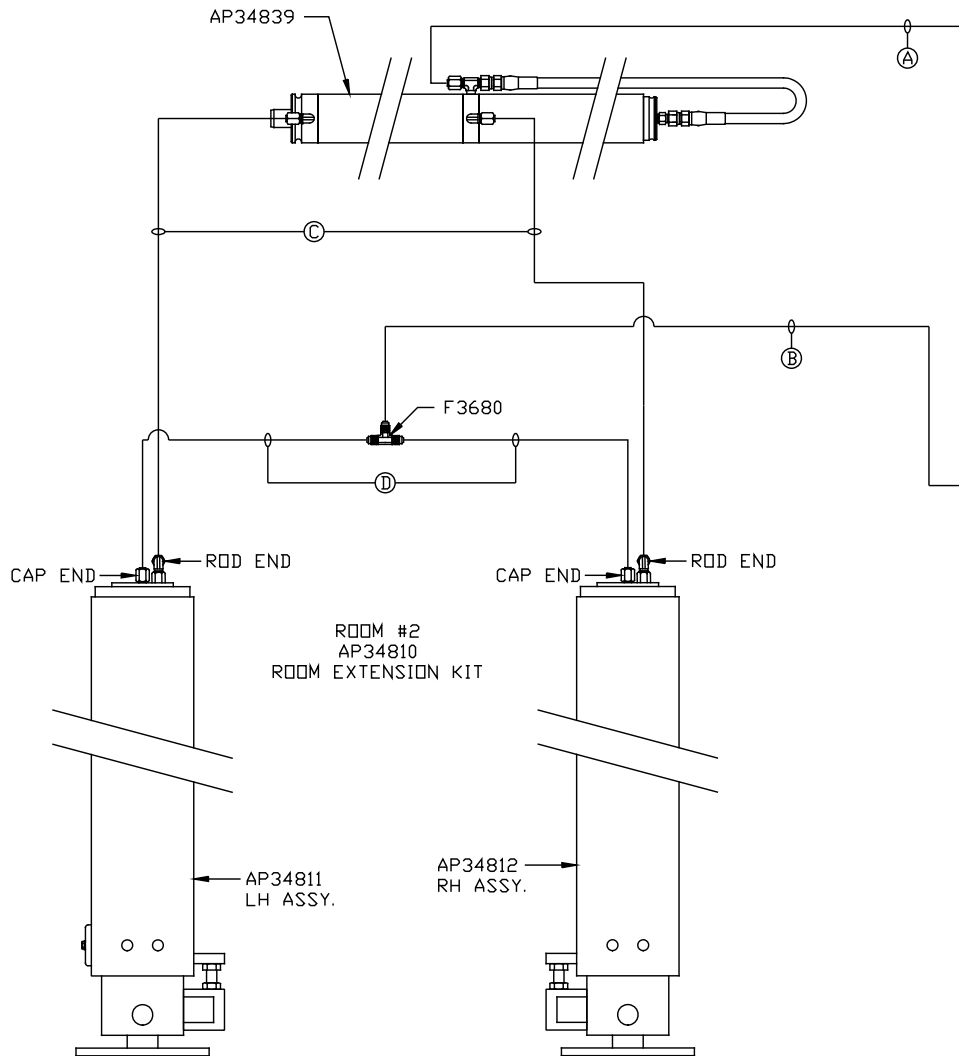
SIDE VIEW PUMP/MANIFOLD-AP50316

LOCATION AND ORIENTATION OF
PUMP/MANIFOLD ASSEMBLY WILL
DIFFER DEPENDING UPON O.E.M.

NOTE: INSTALLATION MUST CONFORM TO GOOD SHOP PRACTICES, SAE
STANDARDS, RVIA STANDARDS, AND OTHER APPLICABLE STANDARDS.

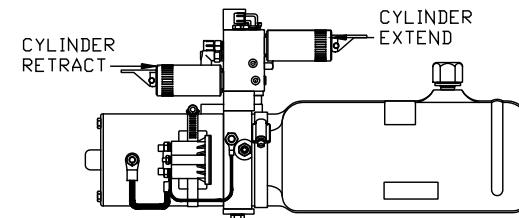
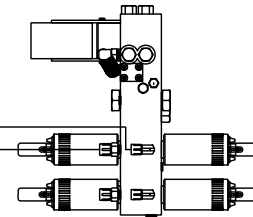
CONTROL PKG: AP50307

		HWH I-80 EXIT 267 SOUTH RT 1 MOSCOW, IOWA 52760	
		SCALE 1:6	DATE 16MAY12
		DRAWN BY .	
		HYD CONN DIAGRAM	
NO.	DATE	REVISION	
		THE INFORMATION DISCLOSED ON THIS DRAWING IS CONFIDENTIAL AND MUST NOT BE DISCLOSED OR USED IN ANY MANNER WHICH WILL BE DETRIMENTAL TO THE HWH CORPORATION	
		WESTERN SHELTER	DRAWING NUMBER MP70531 A/B



- Ⓐ HOSE ASSY .25"
ROD END - ALWAYS PRESSURIZED
- Ⓑ HOSE ASSY .25"
CAP END
- Ⓒ HOSE ASSY HWH02HP OR 03
ROD END - ALWAYS PRESSURIZED - MUST
BE EQUAL LENGTH AND DIAMETER
- Ⓓ HOSE ASSY .25"
CAP END - MUST MAINTAIN EQUAL LENGTH
AND DIAMETER

TOP VIEW
MANIFOLD



SIDE VIEW PUMP/MANIFOLD-AP50316

LOCATION AND ORIENTATION OF
PUMP/MANIFOLD ASSEMBLY WILL
DIFFER DEPENDING UPON O.E.M.

NOTE: INSTALLATION MUST CONFORM TO GOOD SHOP PRACTICES, SAE
STANDARDS, RVIA STANDARDS, AND OTHER APPLICABLE STANDARDS.

MP70531 B/B
16MAY12