

- ① AP6115 HOSE ASSY .25" x 168" - RF ROD END
- ② .25/05 HOSE - RF CAP END
- ③ AP4161 HOSE ASSY .25" x 120" - LF ROD END
- ④ .25/05 HOSE - LF CAP END
- ⑤ AP4164 HOSE ASSY .25" x 384" - RR ROD END
- ⑥ .25/05 HOSE - RR CAP END
- ⑦ AP5561 HOSE ASSY .25" x 336" - LR ROD END
- ⑧ .25/05 HOSE - LR CAP END
- ⑨ AP4073 HOSE ASSY .25" x 60" - PRESSURE TO REMOTE MANIFOLD
- ⑩ P4165 RETURN LINE .5" x 60"

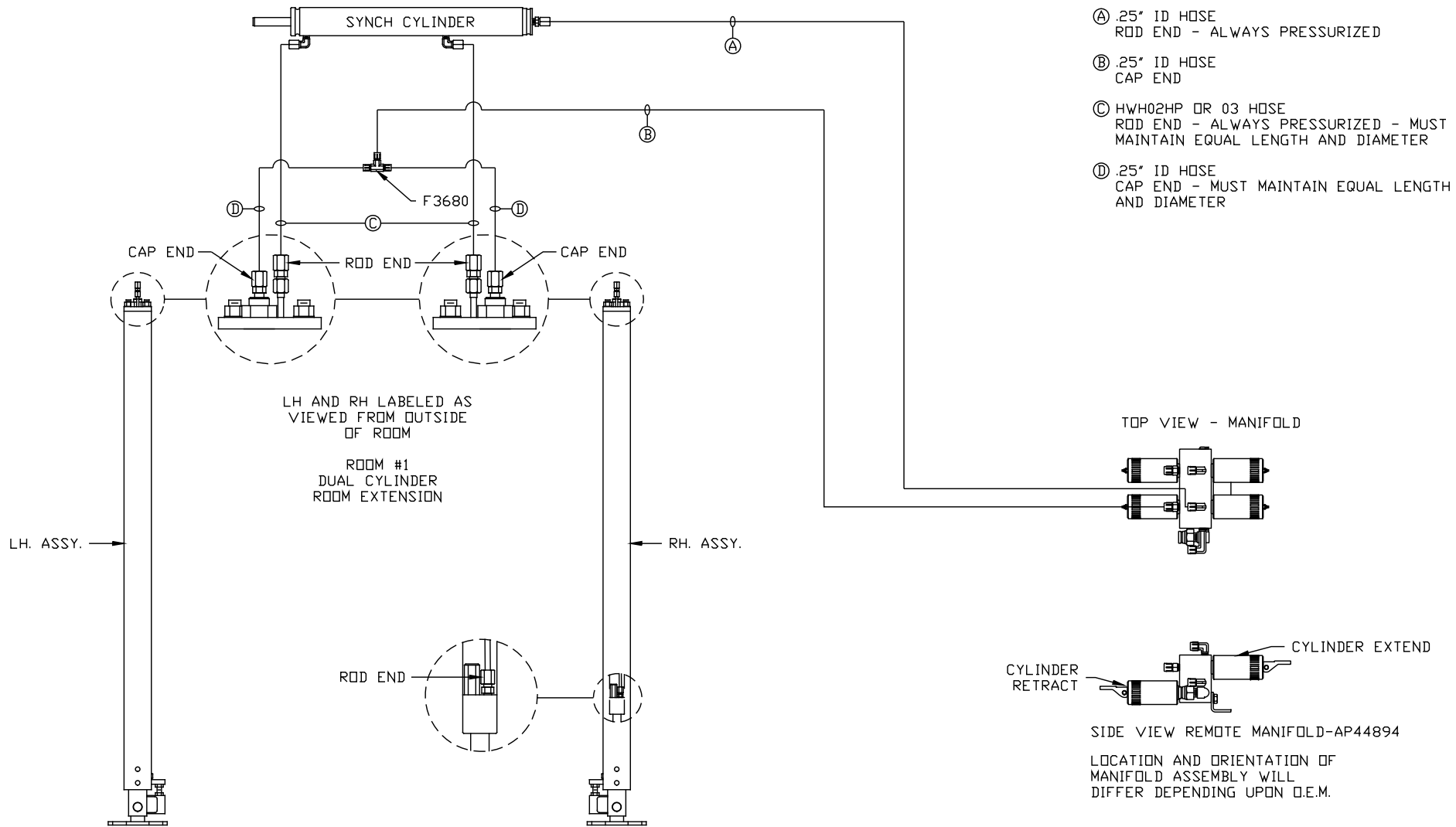
NOTE: INSTALLATION MUST CONFORM TO GOOD SHOP PRACTICES, SAE STANDARDS, RVIA STANDARDS, AND OTHER APPLICABLE STANDARDS.

LEVELING SYSTEM: AP50332

NO.	DATE	REVISION

THE INFORMATION DISCLOSED ON THIS DRAWING IS CONFIDENTIAL AND MUST NOT BE DISCLOSED OR USED IN ANY MANNER WHICH WILL BE DETRIMENTAL TO THE HWH CORPORATION

HWH			I-80 EXIT 267 SOUTH RT 1 MOSCOW, IOWA 52760	
SCALE 1:6	DATE 29MAY12	DRAWN BY .		
HYD CONN DIAGRAM				
JEROME FIRE			DRAWING NUMBER MP70538 A/C	

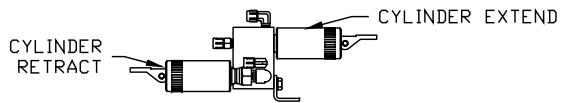
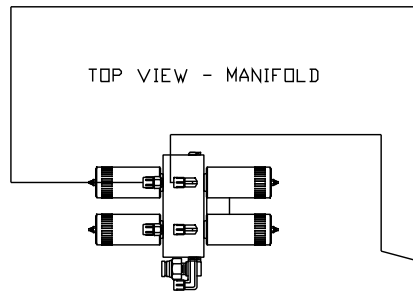


NOTE: INSTALLATION MUST CONFORM TO GOOD SHOP PRACTICES, SAE STANDARDS, RVIA STANDARDS, AND OTHER APPLICABLE STANDARDS.

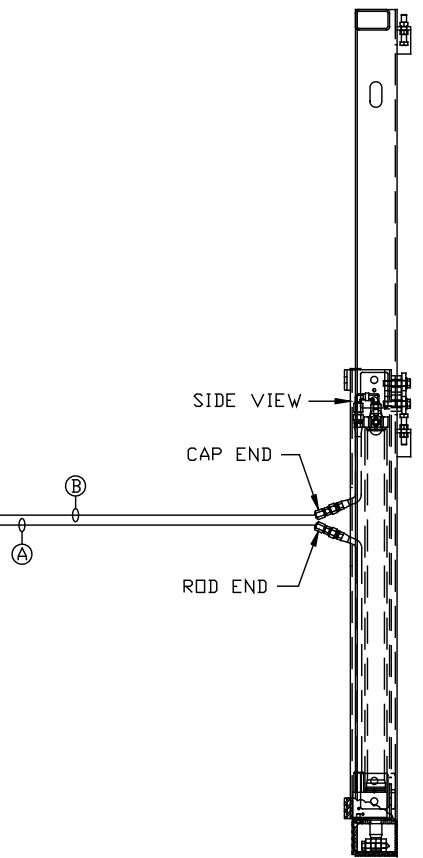
MP70538 B/C  
29MAY12

- Ⓐ HOSE ASSY .25"  
ROD END - ALWAYS PRESSURIZED
- Ⓑ HOSE ASSY .25"  
CAP END

ROOM #2  
BED SLIDE



LOCATION AND ORIENTATION OF  
MANIFOLD ASSEMBLY WILL  
DIFFER DEPENDING UPON O.E.M.



NOTE: INSTALLATION MUST CONFORM TO GOOD SHOP PRACTICES, SAE STANDARDS, RVIA STANDARDS, AND OTHER APPLICABLE STANDARDS.

MP70538 C/C  
29MAY12