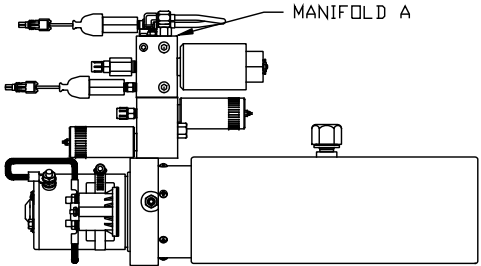
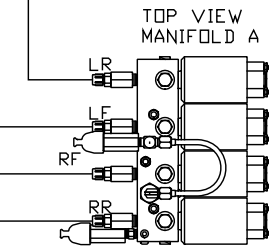
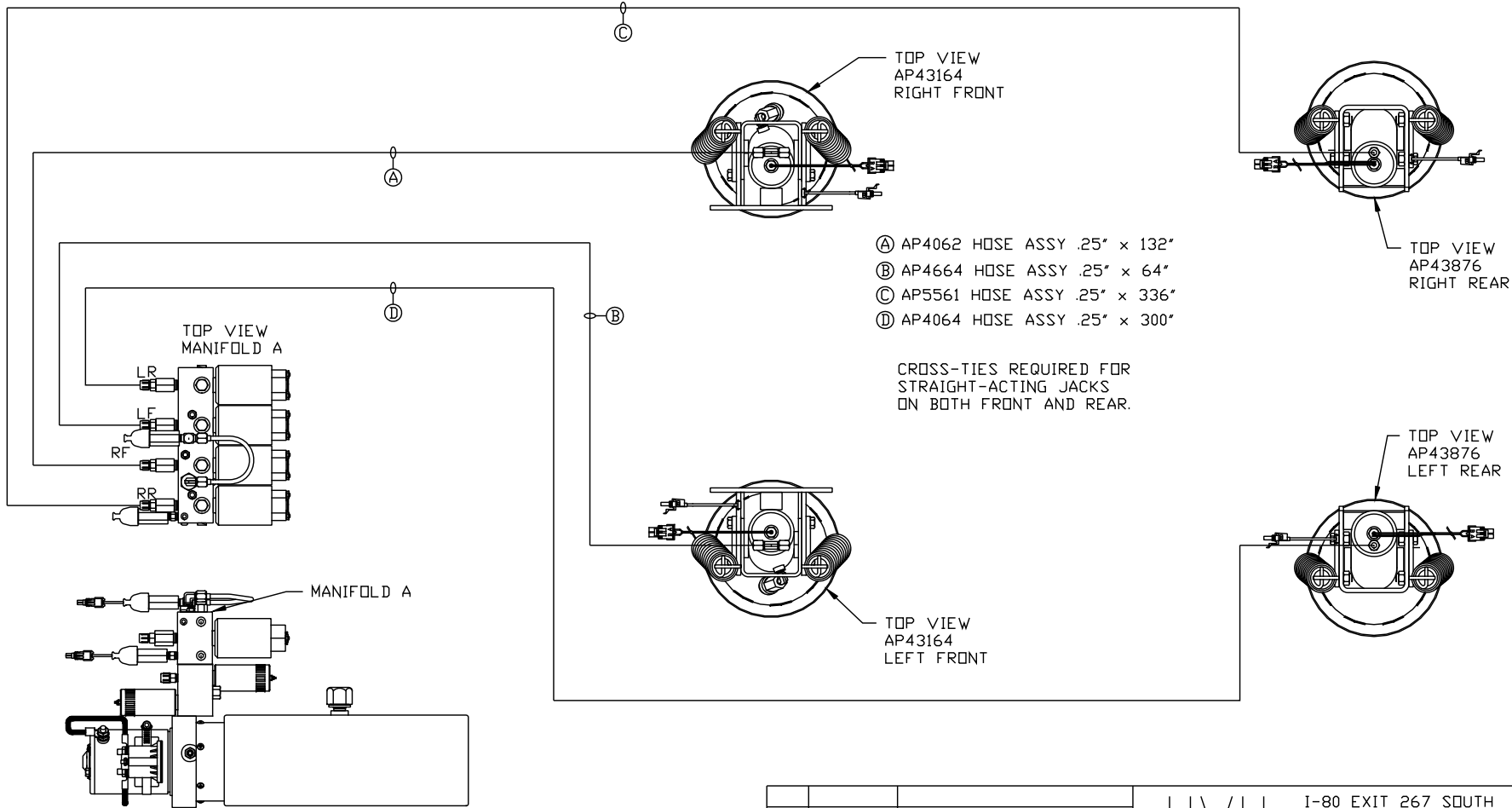


ORIENTATION  
 ← FRONT



SIDE VIEW PUMP/MANIFOLD-AP38506  
 LOCATION AND ORIENTATION OF  
 PUMP/MANIFOLD ASSEMBLY WILL  
 DIFFER DEPENDING UPON O.E.M.

TOP VIEW  
AP43164  
RIGHT FRONT

TOP VIEW  
AP43876  
RIGHT REAR

- Ⓐ AP4062 HOSE ASSY .25" x 132"
- Ⓑ AP4664 HOSE ASSY .25" x 64"
- Ⓒ AP5561 HOSE ASSY .25" x 336"
- Ⓓ AP4064 HOSE ASSY .25" x 300"

CROSS-TIES REQUIRED FOR  
 STRAIGHT-ACTING JACKS  
 ON BOTH FRONT AND REAR.

TOP VIEW  
AP43164  
LEFT FRONT

TOP VIEW  
AP43876  
LEFT REAR

NOTE: INSTALLATION MUST CONFORM TO GOOD SHOP PRACTICES, SAE STANDARDS, RVIA STANDARDS, AND OTHER APPLICABLE STANDARDS.

LEVELING SYSTEM: AP49620

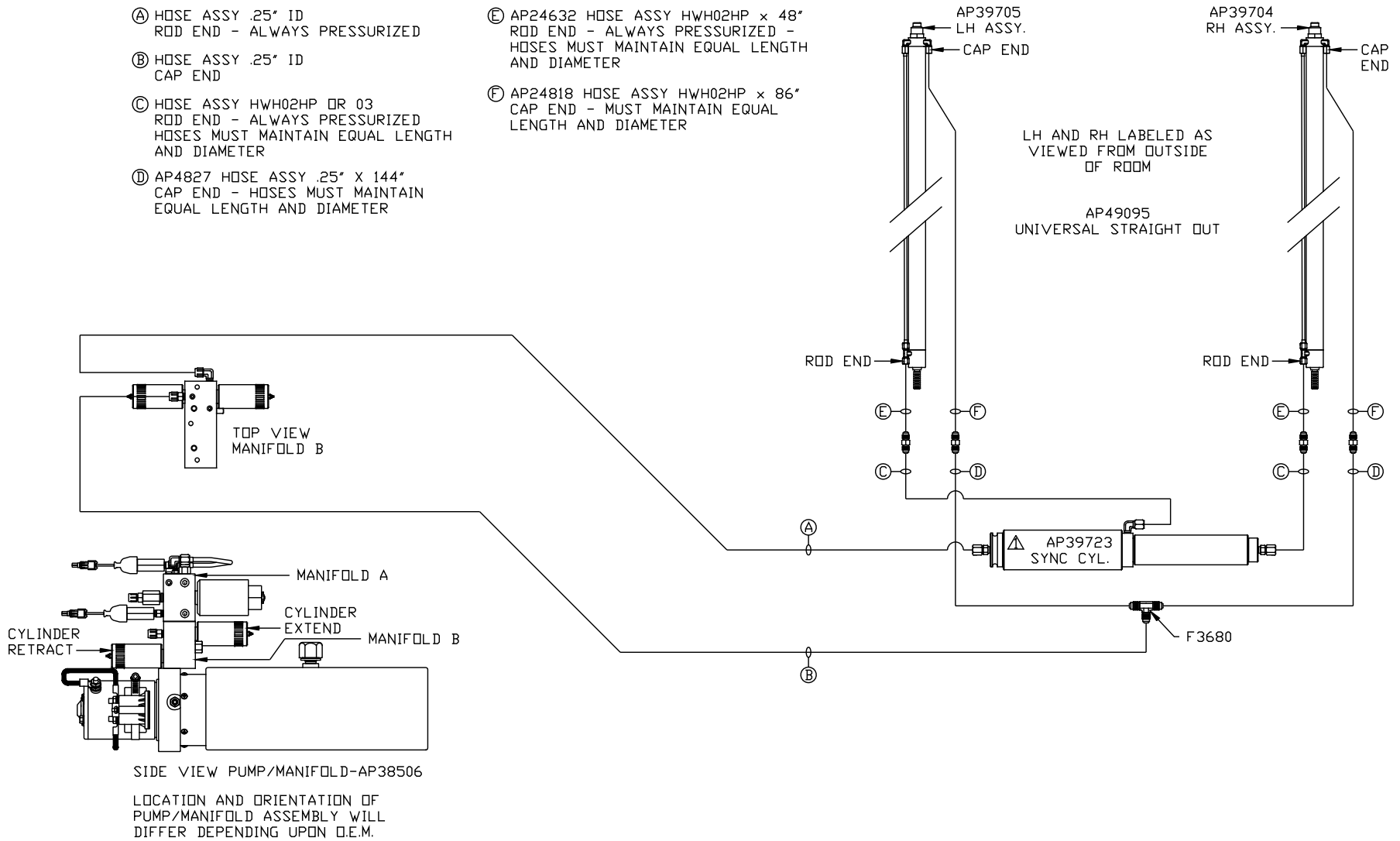
△	06MAY15	WAS AP37881
NO.	DATE	REVISION

HWH			I-80 EXIT 267 SOUTH RT 1 MOSCOW, IOWA 52760		
SCALE 1:6	DATE 14AUG12	DRAWN BY .			
HYD CONN DIAGRAM					
AMERICAN CUSTOM				DRAWING NUMBER MP70576 A/B	

THE INFORMATION DISCLOSED ON THIS DRAWING IS CONFIDENTIAL AND MUST NOT BE DISCLOSED OR USED IN ANY MANNER WHICH WILL BE DETRIMENTAL TO THE HWH CORPORATION

NOTE: HOSES (C) AND (F) ARE INCLUDED WITH THE ROOM EXTENSION MECHANISM

- (A) HOSE ASSY .25" ID  
ROD END - ALWAYS PRESSURIZED
- (B) HOSE ASSY .25" ID  
CAP END
- (C) HOSE ASSY HWH02HP OR 03  
ROD END - ALWAYS PRESSURIZED  
HOSES MUST MAINTAIN EQUAL LENGTH AND DIAMETER
- (D) AP4827 HOSE ASSY .25" X 144"  
CAP END - HOSES MUST MAINTAIN EQUAL LENGTH AND DIAMETER
- (E) AP24632 HOSE ASSY HWH02HP x 48"  
ROD END - ALWAYS PRESSURIZED -  
HOSES MUST MAINTAIN EQUAL LENGTH AND DIAMETER
- (F) AP24818 HOSE ASSY HWH02HP x 86"  
CAP END - MUST MAINTAIN EQUAL LENGTH AND DIAMETER



NOTE: INSTALLATION MUST CONFORM TO GOOD SHOP PRACTICES, SAE STANDARDS, RVIA STANDARDS, AND OTHER APPLICABLE STANDARDS.

MP70576 B/B  
06MAY15