

- Ⓐ HOSE ASSY .25" - RF ROD END
- Ⓑ HOSE ASSY .25/05 - RF CAP END
- Ⓒ HOSE ASSY .25" - LF ROD END
- Ⓓ HOSE ASSY .25/05 - LF CAP END
- Ⓔ HOSE ASSY .25" - RR ROD END
- Ⓕ HOSE ASSY .25/05 - RR CAP END
- Ⓖ HOSE ASSY .25" - LR ROD END
- Ⓗ HOSE ASSY .25/05 - LR CAP END

SIDE VIEW PUMP/MANIFOLD-AP51876

LOCATION AND ORIENTATION OF PUMP/MANIFOLD ASSEMBLY WILL DIFFER DEPENDING UPON O.E.M.

NOTE: INSTALLATION MUST CONFORM TO GOOD SHOP PRACTICES, SAE STANDARDS, RVIA STANDARDS, AND OTHER APPLICABLE STANDARDS.

PROJECT KIT: AP52068

⚠	07MAY15	WAS AP46190
NO.	DATE	REVISION

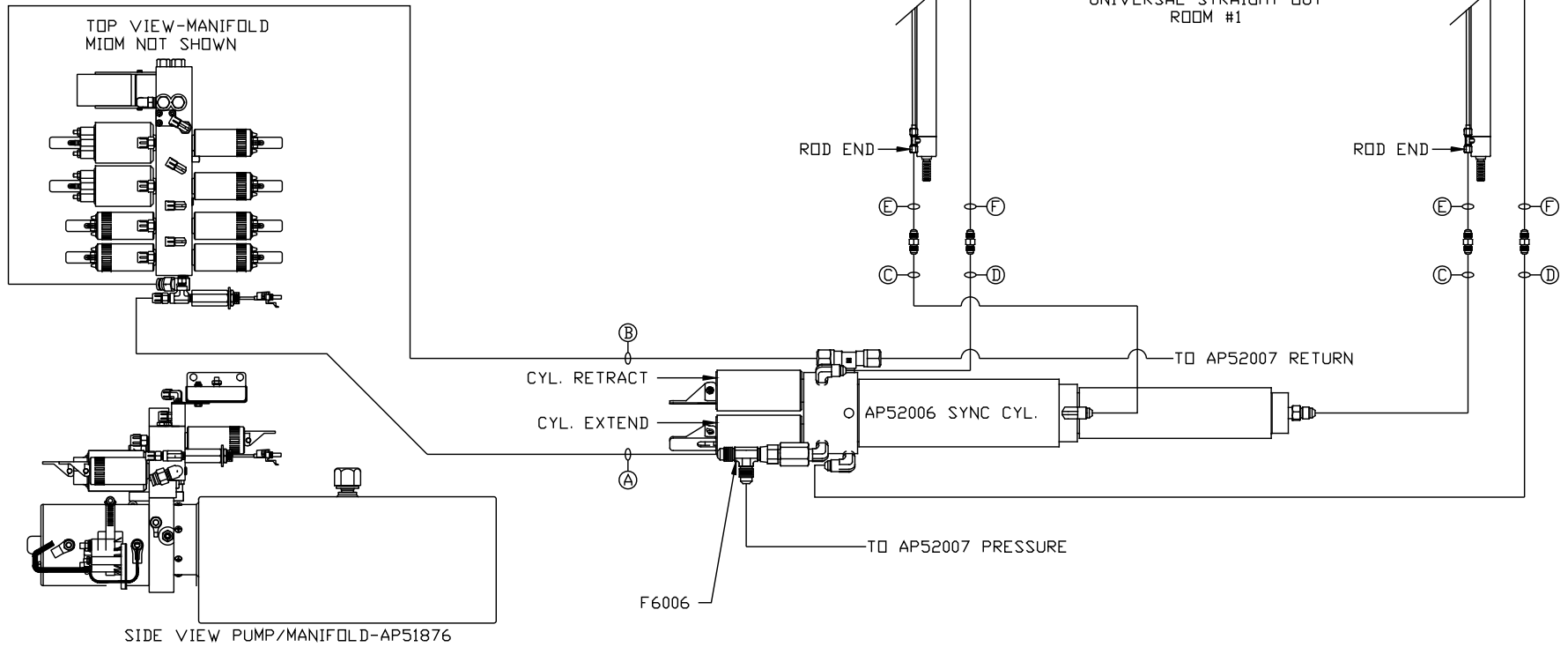
THE INFORMATION DISCLOSED ON THIS DRAWING IS CONFIDENTIAL AND MUST NOT BE DISCLOSED OR USED IN ANY MANNER WHICH WILL BE DETRIMENTAL TO THE HWH CORPORATION

HWH			I-80 EXIT 267 SOUTH RT 1 MOSCOW, IOWA 52760		
SCALE 1:6	DATE 22OCT13	DRAWN BY .			
HYD CONN DIAGRAM					
CHARIOT VANS				DRAWING NUMBER MP70661 A/C	

NOTE: HOSES (C) AND (F) ARE INCLUDED WITH THE ROOM EXTENSION MECHANISM

- (A) HOSE ASSY .125" ID PRESSURE
- (B) .375" OD NYLON TUBING RETURN
- (C) HOSE ASSY .125" ID DR 03 ROD END - ALWAYS PRESSURIZED HOSES MUST MAINTAIN EQUAL LENGTH AND DIAMETER
- (D) HOSE ASSY .25" ID CAP END - HOSES MUST MAINTAIN EQUAL LENGTH AND DIAMETER

- (E) AP24632 HOSE ASSY HWH02HP x 48" ROD END - ALWAYS PRESSURIZED - HOSES MUST MAINTAIN EQUAL LENGTH AND DIAMETER
- (F) AP24818 HOSE ASSY HWH02HP x 86" CAP END - MUST MAINTAIN EQUAL LENGTH AND DIAMETER

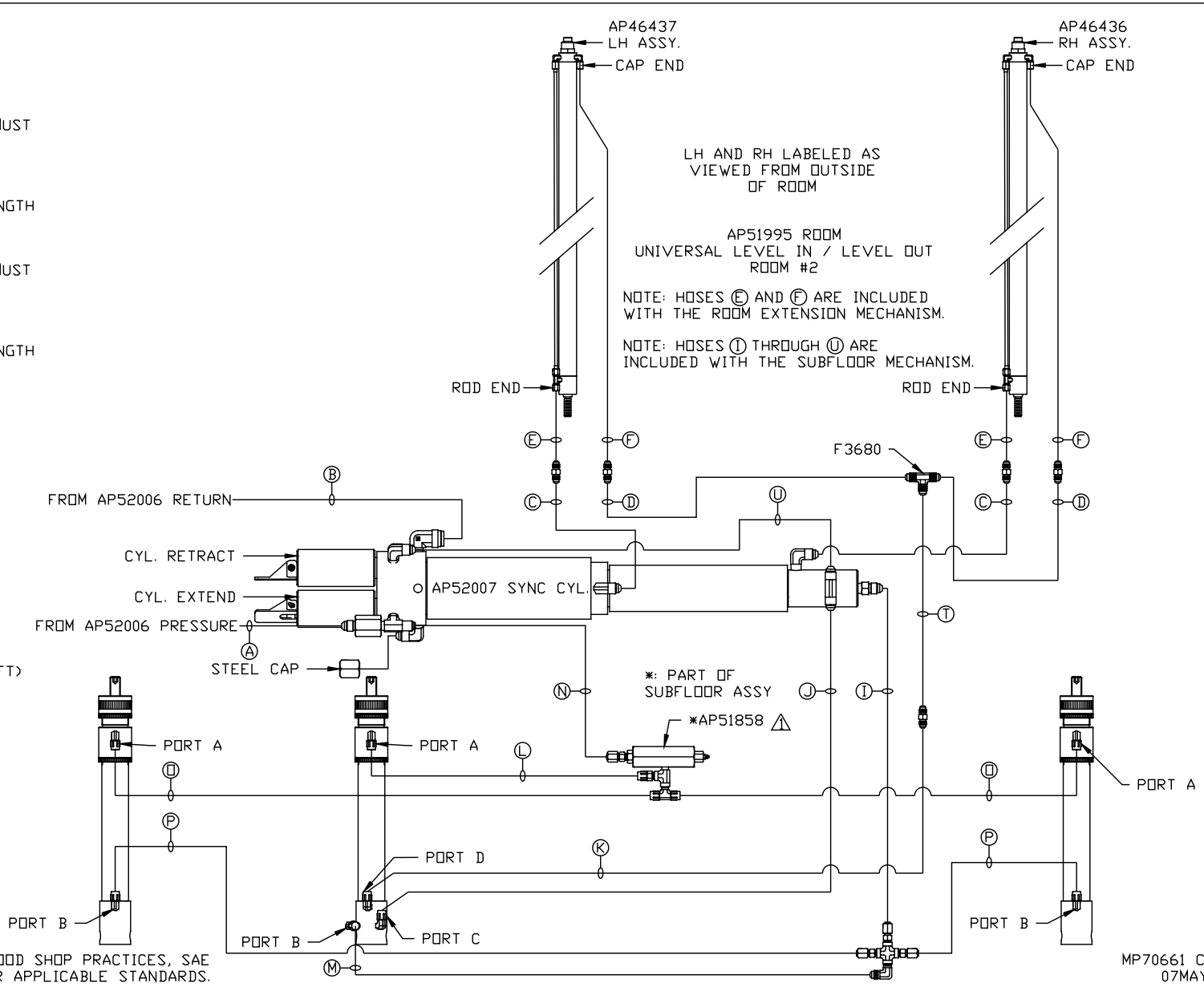


LOCATION AND ORIENTATION OF PUMP/MANIFOLD ASSEMBLY WILL DIFFER DEPENDING UPON O.E.M.

NOTE: INSTALLATION MUST CONFORM TO GOOD SHOP PRACTICES, SAE STANDARDS, RVIA STANDARDS, AND OTHER APPLICABLE STANDARDS.

MP70661 B/C
22OCT13

- (A) HOSE ASSY .25" ID PRESSURE
- (B) .375" OD NYLON TUBING RETURN
- (C) HOSE ASSY .125" ID OR 03 ROD END - ALWAYS PRESSURIZED - MUST BE HIGH PRESSURE HOSES OF EQUAL LENGTH AND DIAMETER
- (D) HOSE ASSY .25" ID CAP END - MUST MAINTAIN EQUAL LENGTH AND DIAMETER
- (E) AP24632 HOSE ASSY HWH02HP x 48" ROD END - ALWAYS PRESSURIZED - MUST BE HIGH PRESSURE HOSES OF EQUAL LENGTH AND DIAMETER
- (F) AP24818 HOSE ASSY HWH02HP x 86" CAP END - MUST MAINTAIN EQUAL LENGTH AND DIAMETER
- (I) AP4218 HOSE ASSY .25" x 40" CAP END (LIFT)
- (J) AP2443 HOSE ASSY .25" x 146" CAP END (LIFT)
- (K) AP4767 HOSE ASSY .25" x 80" CAP END (ROOM)
- (L) AP54060 HOSE ASSY .25" x 24" ROD END (LIFT) - ALWAYS PRESSURIZED
- (M) AP4217 HOSE ASSY .25" x 30" CAP END (LIFT)
- (N) AP4075 HOSE ASSY .25" x 42" ROD END - ALWAYS PRESSURIZED (LIFT)
- (O) AP5384 HOSE ASSY .25" x 116" ROD END (LIFT) - ALWAYS PRESSURIZED - MUST BE HOSES OF EQUAL LENGTH AND DIAMETER
- (P) AP4906 HOSE ASSY .25" x 125" CAP END (LIFT) - MUST BE HOSES OF EQUAL LENGTH AND DIAMETER
- (S) HOSE ASSY .25" ID CAP END (LIFT)
- (T) HOSE ASSY .25" ID CAP END (ROOM)



NOTE: INSTALLATION MUST CONFORM TO GOOD SHOP PRACTICES, SAE STANDARDS, RVIA STANDARDS, AND OTHER APPLICABLE STANDARDS.