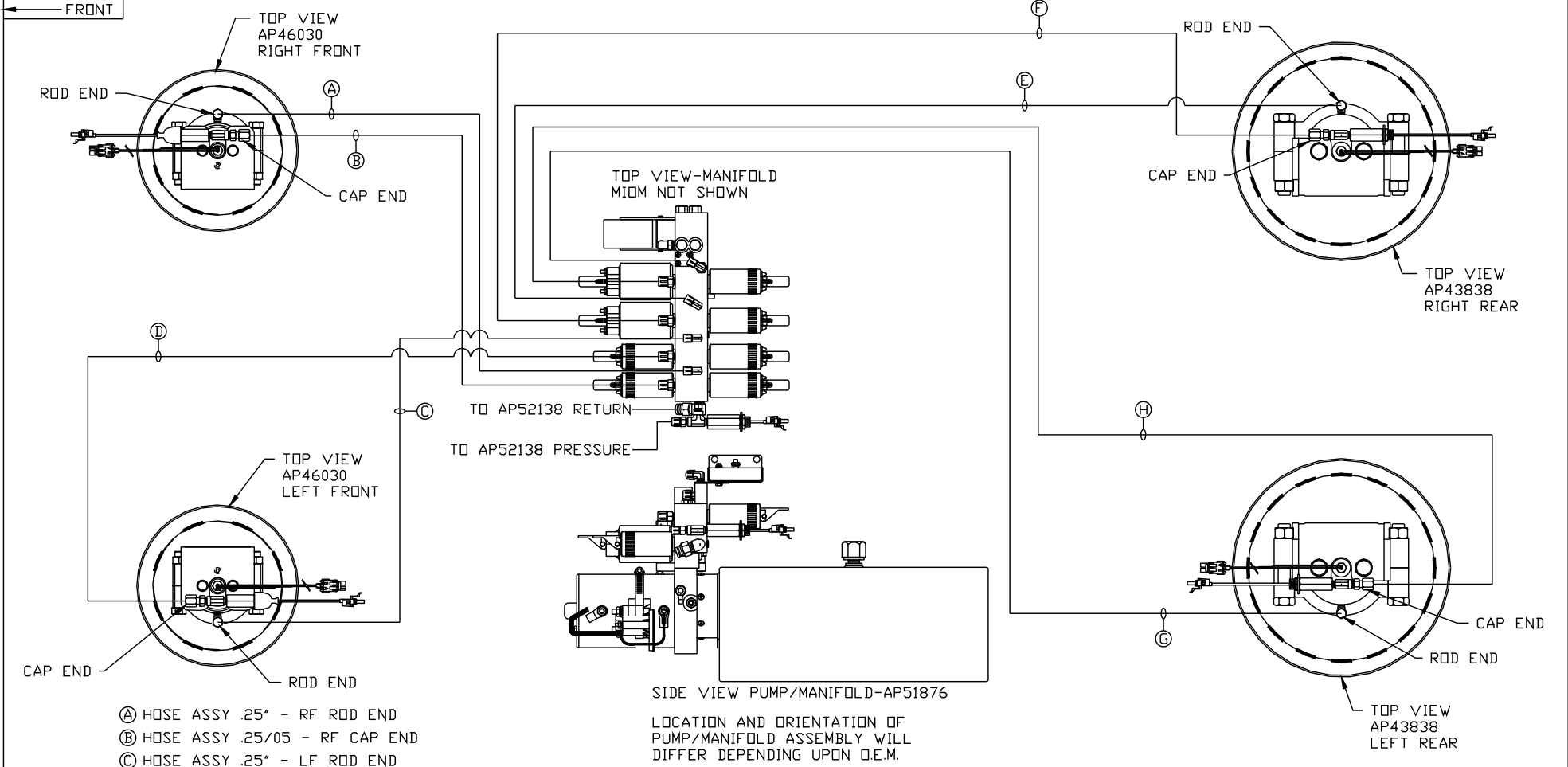


ORIENTATION
← FRONT



- Ⓐ HOSE ASSY .25" - RF ROD END
- Ⓑ HOSE ASSY .25/05 - RF CAP END
- Ⓒ HOSE ASSY .25" - LF ROD END
- Ⓓ HOSE ASSY .25/05 - LF CAP END
- Ⓔ HOSE ASSY .25" - RR ROD END
- Ⓕ HOSE ASSY .25/05 - RR CAP END
- Ⓖ HOSE ASSY .25" - LR ROD END
- Ⓗ HOSE ASSY .25/05 - LR CAP END

NOTE: INSTALLATION MUST CONFORM TO GOOD SHOP PRACTICES, SAE STANDARDS, RVIA STANDARDS, AND OTHER APPLICABLE STANDARDS.

PROJECT KIT: AP52170

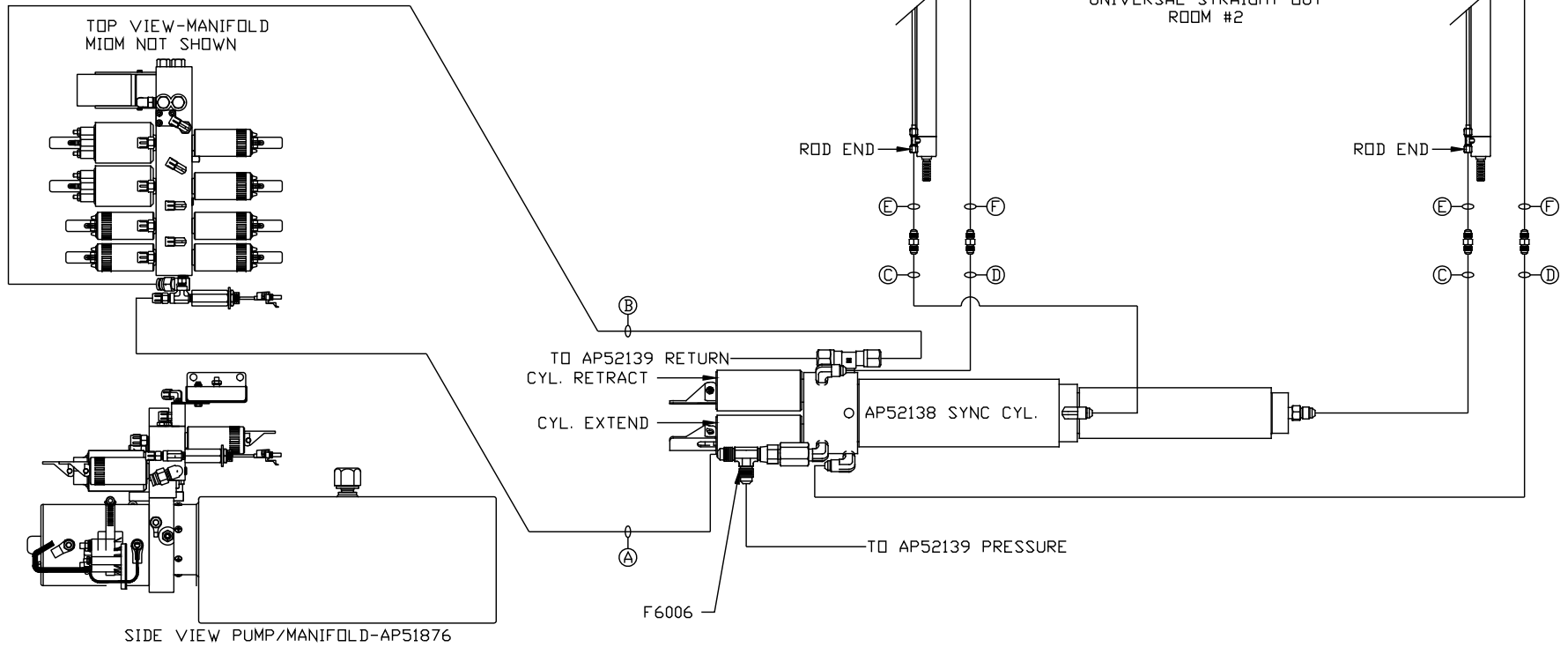
NO.	DATE	REVISION
THE INFORMATION DISCLOSED ON THIS DRAWING IS CONFIDENTIAL AND MUST NOT BE DISCLOSED OR USED IN ANY MANNER WHICH WILL BE DETRIMENTAL TO THE HWH CORPORATION		

HWH		I-80 EXIT 267 SOUTH RT 1 MOSCOW, IOWA 52760	
SCALE 1:6	DATE 22OCT13	DRAWN BY .	
HYD CONN DIAGRAM			
CHARIOT VANS			DRAWING NUMBER MP70662 A/C

NOTE: HOSES (C) AND (F) ARE INCLUDED WITH THE ROOM EXTENSION MECHANISM

- (A) HOSE ASSY .25" ID PRESSURE
- (B) .375" OD NYLON TUBING RETURN
- (C) HOSE ASSY 3/16" ID ROD END - ALWAYS PRESSURIZED HOSES MUST MAINTAIN EQUAL LENGTH AND DIAMETER
- (D) HOSE ASSY .25" ID CAP END - HOSES MUST MAINTAIN EQUAL LENGTH AND DIAMETER

- (E) AP24631 HOSE ASSY HWH02HP X 42" ROD END - ALWAYS PRESSURIZED - HOSES MUST MAINTAIN EQUAL LENGTH AND DIAMETER
- (F) AP24637 HOSE ASSY HWH02HP X 66" CAP END - MUST MAINTAIN EQUAL LENGTH AND DIAMETER



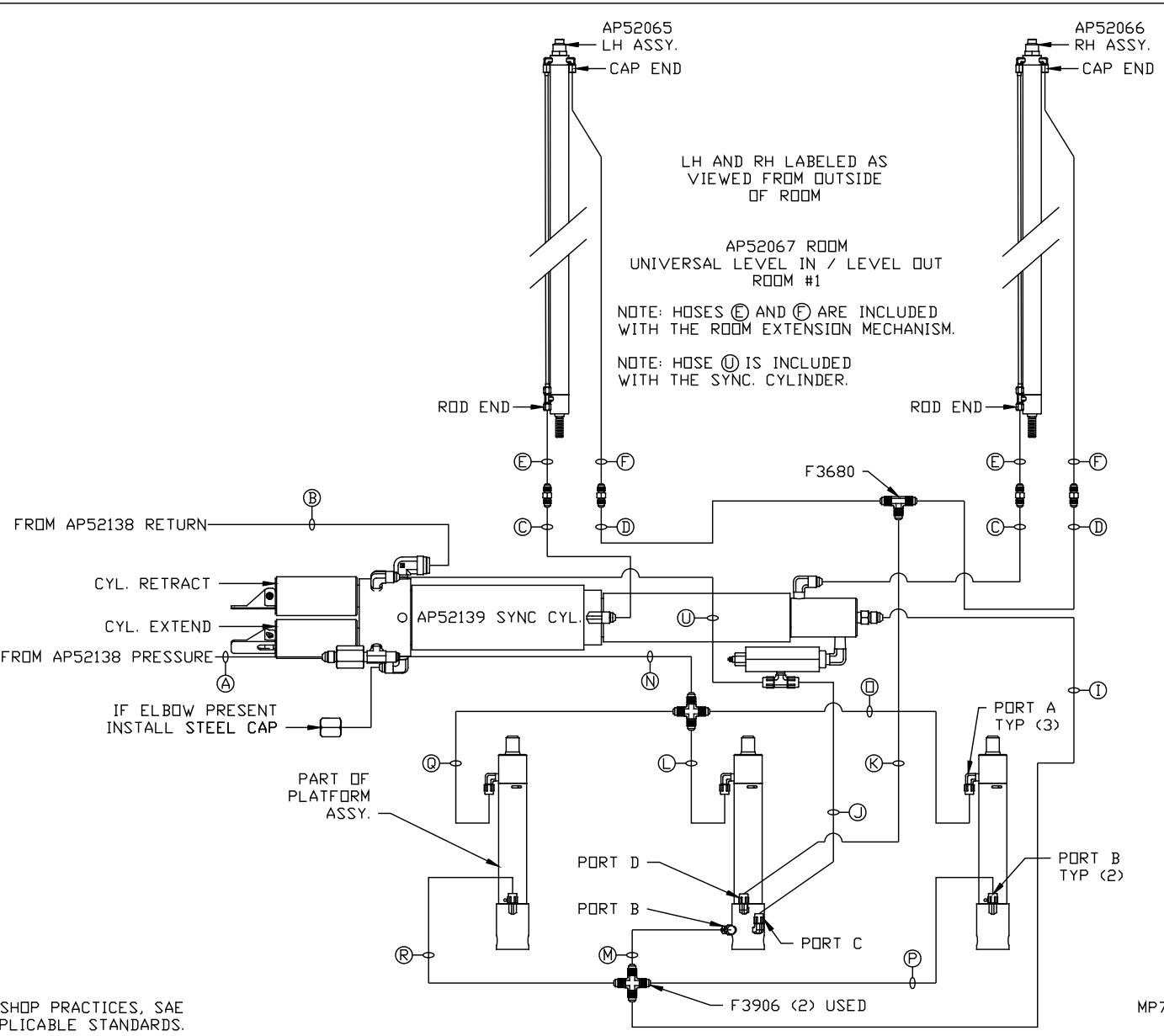
LH AND RH LABELED AS VIEWED FROM OUTSIDE OF ROOM

AP52056
UNIVERSAL STRAIGHT OUT ROOM #2

LOCATION AND ORIENTATION OF PUMP/MANIFOLD ASSEMBLY WILL DIFFER DEPENDING UPON O.E.M.

NOTE: INSTALLATION MUST CONFORM TO GOOD SHOP PRACTICES, SAE STANDARDS, RVIA STANDARDS, AND OTHER APPLICABLE STANDARDS.

- (A) HOSE ASSY .25" ID PRESSURE
- (B) .375" OD NYLON TUBING RETURN
- (C) HOSE ASSY 3/16" ID ROD END - ALWAYS PRESSURIZED - MUST BE HIGH PRESSURE HOSES OF EQUAL LENGTH AND DIAMETER
- (D) HOSE ASSY .25" ID CAP END - MUST MAINTAIN EQUAL LENGTH AND DIAMETER
- (E) AP24632 HOSE ASSY HWH02HP x 48" ROD END - ALWAYS PRESSURIZED - MUST BE HIGH PRESSURE HOSES OF EQUAL LENGTH AND DIAMETER
- (F) AP24818 HOSE ASSY HWH02HP x 86" CAP END - MUST MAINTAIN EQUAL LENGTH AND DIAMETER
- (I) .25" ID HOSE ASSY CAP END (LIFT)
- (J) HOSE ASSY 3/16" ID CAP END (ROOM)
- (K) HOSE ASSY 3/16" ID CAP END (ROOM)
- (L) HOSE ASSY 3/16" ID ROD END (LIFT) ALWAYS PRESSURIZED
- (M) HOSE ASSY 3/16" ID CAP END (LIFT)
- (N) .25" ID HOSE ASSY ROD END - ALWAYS PRESSURIZED (LIFT) FROM AP52138 PRESSURE
- (O) HOSE ASSY 3/16" ID ROD END (LIFT) ALWAYS PRESSURIZED
- (P) HOSE ASSY 3/16" ID CAP END LIFT
- (Q) HOSE ASSY 3/16" ID ROD END (LIFT) ALWAYS PRESSURIZED
- (R) HOSE ASSY 3/16" ID CAP END LIFT
- (U) HOSE ASSY .25" ID CAP END (LIFT)



NOTE: INSTALLATION MUST CONFORM TO GOOD SHOP PRACTICES, SAE STANDARDS, RVIA STANDARDS, AND OTHER APPLICABLE STANDARDS.

MP70662 C/C
22OCT13