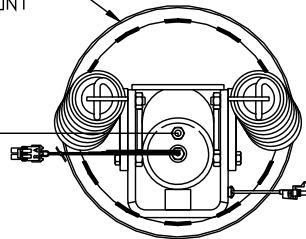
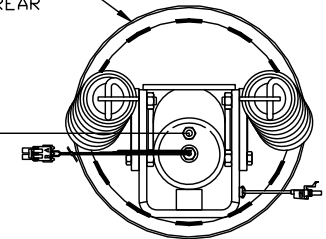


ORIENTATION
← FRONT

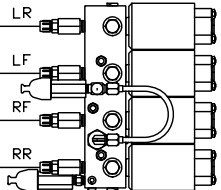
TOP VIEW
AP38147
RIGHT FRONT



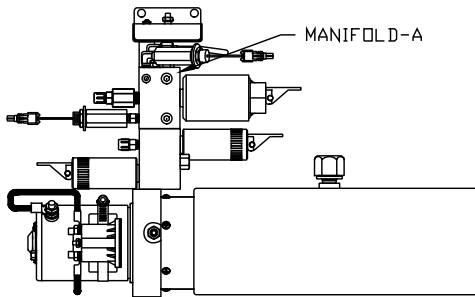
TOP VIEW
AP38147
RIGHT REAR



TOP VIEW
MANIFOLD-A
MIDM NOT SHOWN



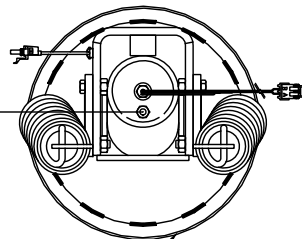
MANIFOLD-A



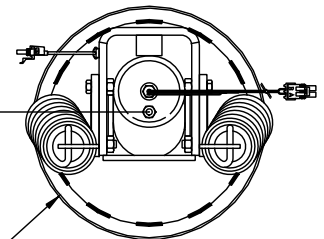
SIDE VIEW PUMP/MANIFOLD-AP49717

LOCATION AND ORIENTATION OF
PUMP/MANIFOLD ASSEMBLY WILL
DIFFER DEPENDING UPON O.E.M.

TOP VIEW
AP38147
LEFT FRONT



TOP VIEW
AP38147
LEFT REAR



- Ⓐ AP1410 HOSE ASSY .25" x 139"
- Ⓑ AP5965 HOSE ASSY .25" x 180"
- Ⓒ AP4164 HOSE ASSY .25" x 384"
- Ⓓ AP6388 HOSE ASSY .25" x 462"

CROSS TIES REQUIRED FOR
FRONT AND REAR JACKS

NOTE: INSTALLATION MUST CONFORM TO GOOD SHOP PRACTICES, SAE STANDARDS, RVIA STANDARDS, AND OTHER APPLICABLE STANDARDS.

LEVELING SYSTEM: AP51239

NO.	DATE	REVISION

THE INFORMATION DISCLOSED ON THIS DRAWING IS CONFIDENTIAL AND MUST NOT BE DISCLOSED OR USED IN ANY MANNER WHICH WILL BE DETRIMENTAL TO THE HWH CORPORATION

HWH I-80 EXIT 267 SOUTH
RT 1 MOSCOW, IOWA 52760

SCALE 1:6 DATE 18NOV13 DRAWN BY .

HYD CONN DIAGRAM

ARMOR METAL

DRAWING NUMBER
MP70672 A/B

