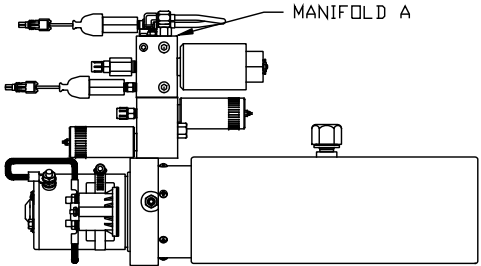
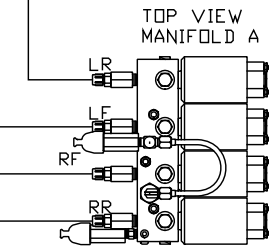
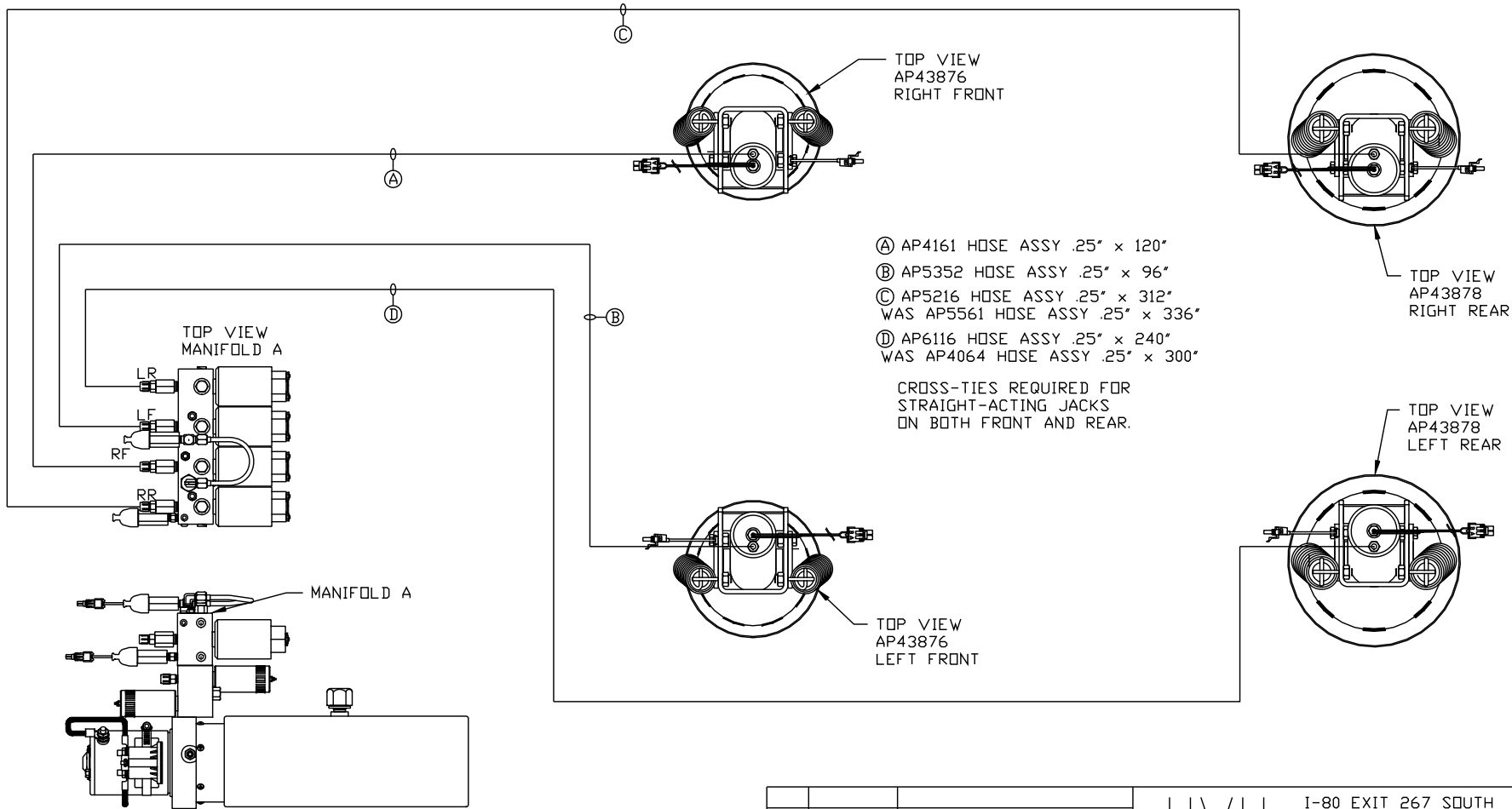


ORIENTATION
 ← FRONT



SIDE VIEW PUMP/MANIFOLD-AP38506
 LOCATION AND ORIENTATION OF
 PUMP/MANIFOLD ASSEMBLY WILL
 DIFFER DEPENDING UPON O.E.M.

TOP VIEW
AP43876
RIGHT FRONT

TOP VIEW
AP43878
RIGHT REAR

TOP VIEW
AP43878
LEFT REAR

TOP VIEW
AP43876
LEFT FRONT

- Ⓐ AP4161 HOSE ASSY .25" x 120"
- Ⓑ AP5352 HOSE ASSY .25" x 96"
- Ⓒ AP5216 HOSE ASSY .25" x 312"
WAS AP5561 HOSE ASSY .25" x 336"
- Ⓓ AP6116 HOSE ASSY .25" x 240"
WAS AP4064 HOSE ASSY .25" x 300"

CROSS-TIES REQUIRED FOR
STRAIGHT-ACTING JACKS
ON BOTH FRONT AND REAR.

NOTE: INSTALLATION MUST CONFORM TO GOOD SHOP PRACTICES, SAE STANDARDS, RVIA STANDARDS, AND OTHER APPLICABLE STANDARDS.

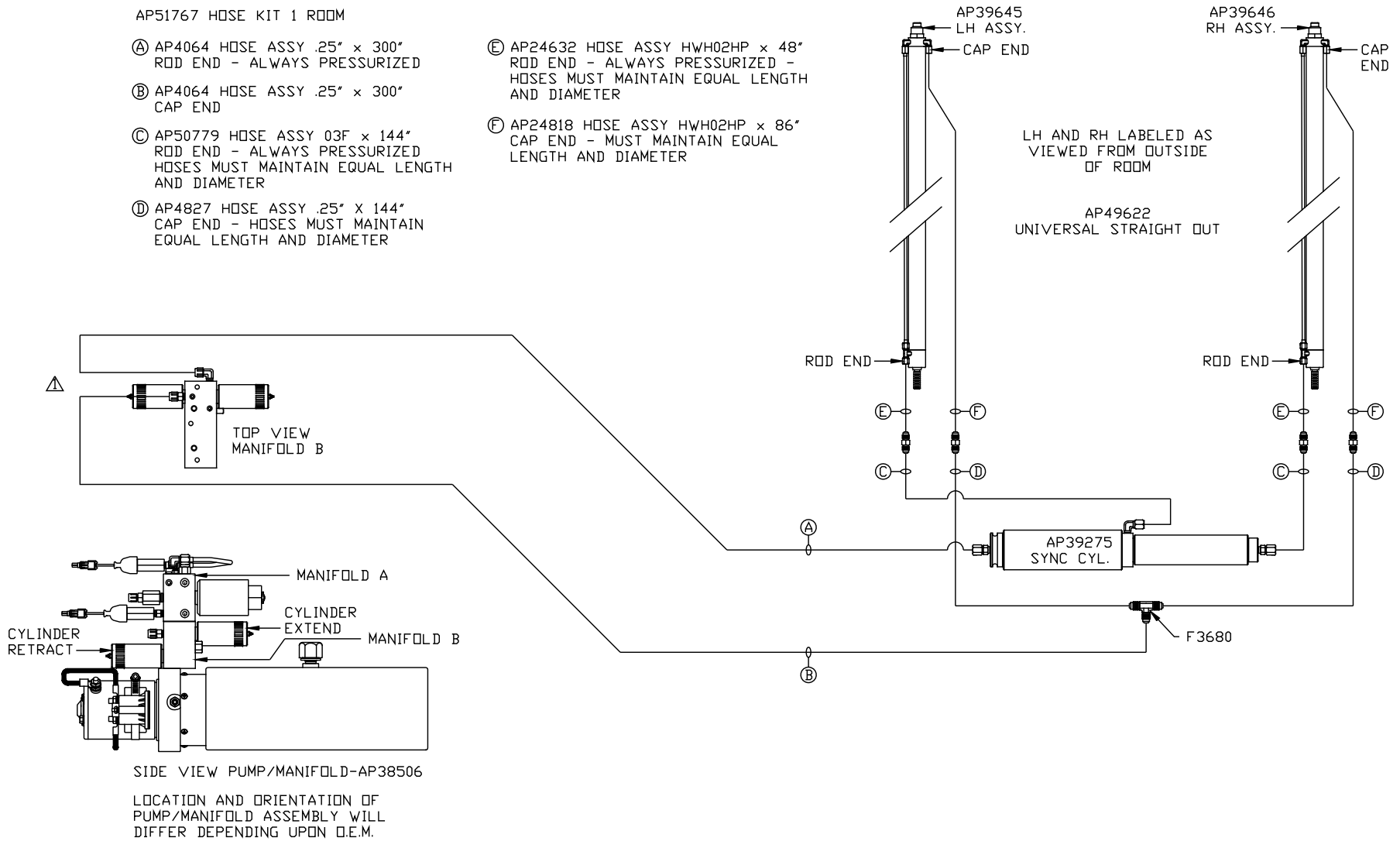
LEVELING SYSTEM: AP51765

		HWH		I-80 EXIT 267 SOUTH RT 1 MOSCOW, IOWA 52760	
2	18FEB16	UPDATED HOSES		SCALE 1:6	DATE 08DEC13
△	06MAY15	CORR. CAP / ROD		DRAWN BY .	
NO.	DATE	REVISION		HYD CONN DIAGRAM	
THE INFORMATION DISCLOSED ON THIS DRAWING IS CONFIDENTIAL AND MUST NOT BE DISCLOSED OR USED IN ANY MANNER WHICH WILL BE DETRIMENTAL TO THE HWH CORPORATION				AMERICAN CUSTOM	
				DRAWING NUMBER MP70728 A/B	

NOTE: HOSES ③ AND ④ ARE INCLUDED WITH THE ROOM EXTENSION MECHANISM

AP51767 HOSE KIT 1 ROOM

- ① AP4064 HOSE ASSY .25" x 300" ROD END - ALWAYS PRESSURIZED
- ② AP4064 HOSE ASSY .25" x 300" CAP END
- ③ AP50779 HOSE ASSY 03F x 144" ROD END - ALWAYS PRESSURIZED HOSES MUST MAINTAIN EQUAL LENGTH AND DIAMETER
- ④ AP4827 HOSE ASSY .25" X 144" CAP END - HOSES MUST MAINTAIN EQUAL LENGTH AND DIAMETER
- ⑤ AP24632 HOSE ASSY HWH02HP x 48" ROD END - ALWAYS PRESSURIZED - HOSES MUST MAINTAIN EQUAL LENGTH AND DIAMETER
- ⑥ AP24818 HOSE ASSY HWH02HP x 86" CAP END - MUST MAINTAIN EQUAL LENGTH AND DIAMETER



NOTE: INSTALLATION MUST CONFORM TO GOOD SHOP PRACTICES, SAE STANDARDS, RVIA STANDARDS, AND OTHER APPLICABLE STANDARDS.

MP70728 B/B
06MAY15