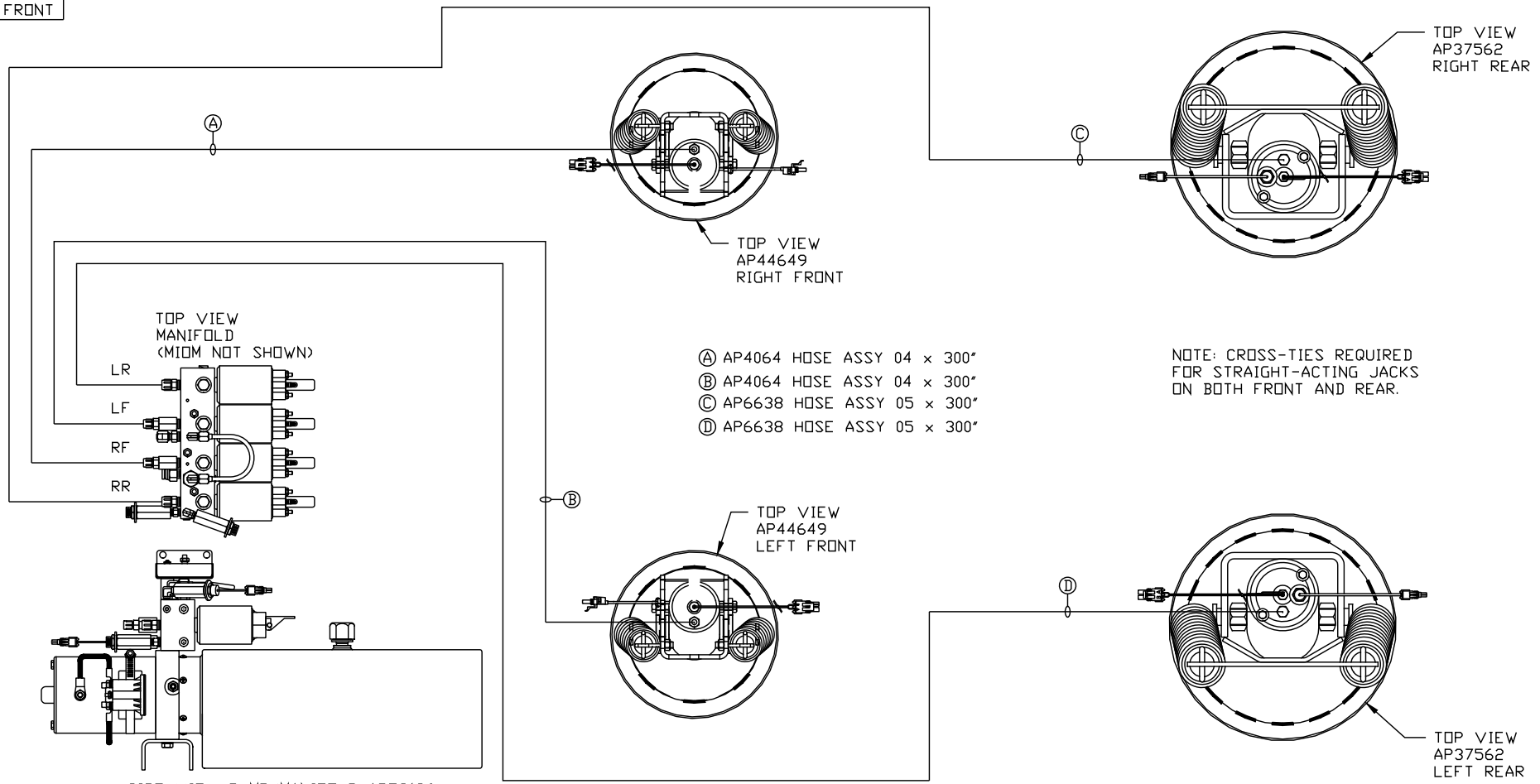
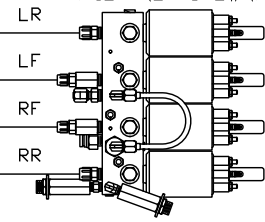


ORIENTATION
← FRONT



TOP VIEW
MANIFOLD
(MIDM NOT SHOWN)



- Ⓐ AP4064 HOSE ASSY 04 x 300"
- Ⓑ AP4064 HOSE ASSY 04 x 300"
- Ⓒ AP6638 HOSE ASSY 05 x 300"
- Ⓓ AP6638 HOSE ASSY 05 x 300"

NOTE: CROSS-TIES REQUIRED
FOR STRAIGHT-ACTING JACKS
ON BOTH FRONT AND REAR.

SIDE VIEW PUMP/MANIFOLD-AP53196
LOCATION AND ORIENTATION OF
PUMP/MANIFOLD ASSEMBLY WILL
DIFFER DEPENDING UPON O.E.M.

NOTE: INSTALLATION MUST CONFORM TO GOOD SHOP PRACTICES, SAE
STANDARDS, RVIA STANDARDS, AND OTHER APPLICABLE STANDARDS.

LEVELING SYSTEM: AP54666

△	14MAY15	CORRECTED TYPO
NO.	DATE	REVISION
THE INFORMATION DISCLOSED ON THIS DRAWING IS CONFIDENTIAL AND MUST NOT BE DISCLOSED OR USED IN ANY MANNER WHICH WILL BE DETRIMENTAL TO THE HWH CORPORATION		

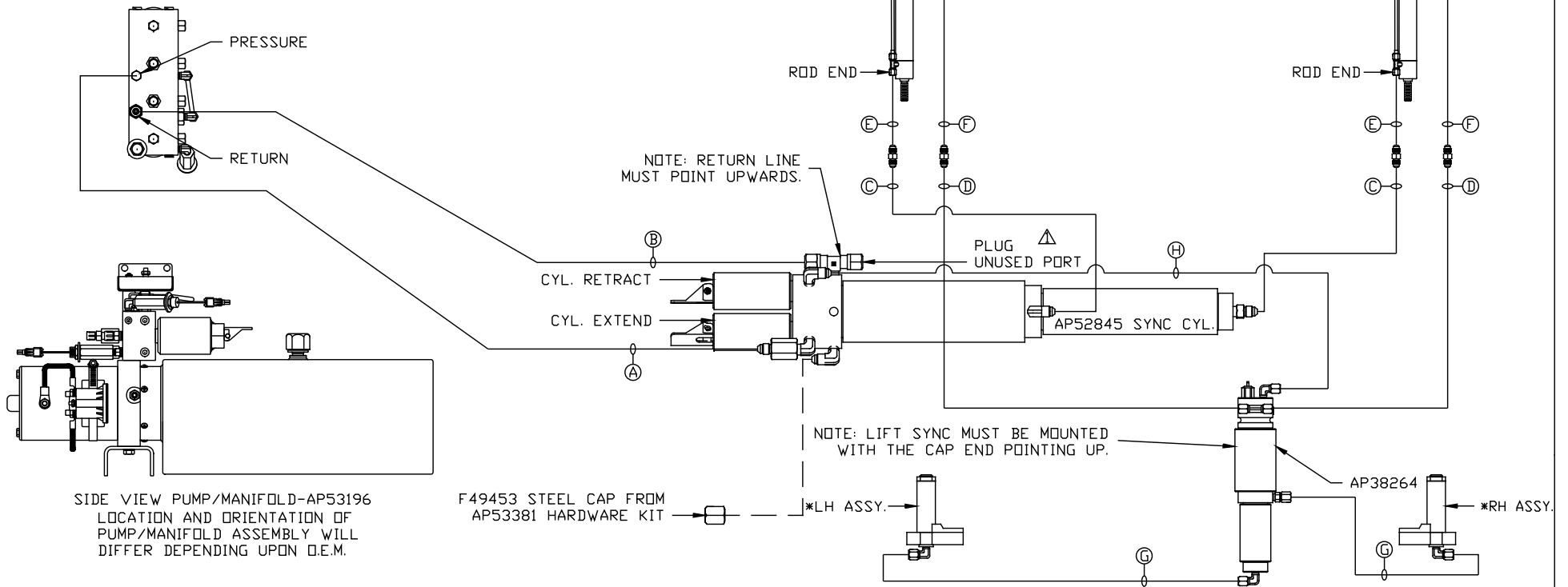
HWH			I-80 EXIT 267 SOUTH RT 1 MOSCOW, IOWA 52760		
SCALE 1:6	DATE 14JAN15	DRAWN BY .			
HYD CONN DIAGRAM					
MATTHEWS				DRAWING NUMBER MP70838 A/B	

*: PART OF THE ROOM EXTENSION MECHANISM.

NOTE: HOSES (C) AND (F) ARE INCLUDED WITH THE ROOM EXTENSION MECHANISM.

- (A) HOSE ASSY 04 PRESSURE
- (B) .375" OD NYLON TUBING RETURN
- (C) HOSE ASSY 03 ROD END - ALWAYS PRESSURIZED - HOSES MUST MAINTAIN EQUAL LENGTH AND DIAMETER
- (D) HOSE ASSY 04 CAP END - HOSES MUST MAINTAIN EQUAL LENGTH AND DIAMETER

- (E) AP24632 HOSE ASSY HWH02HP X 48" ROD END - ALWAYS PRESSURIZED - HOSES MUST MAINTAIN EQUAL LENGTH AND DIAMETER
- (F) AP24818 HOSE ASSY HWH02HP X 86" CAP END - MUST MAINTAIN EQUAL LENGTH AND DIAMETER
- (G) HOSE ASSY 03 CAP END - HOSES MUST MAINTAIN EQUAL LENGTH AND DIAMETER
- (H) HOSE ASSY 04 CAP END



NOTE: INSTALLATION MUST CONFORM TO GOOD SHOP PRACTICES, SAE STANDARDS, RVIA STANDARDS, AND OTHER APPLICABLE STANDARDS.

MP70838 B/B
14MAY15