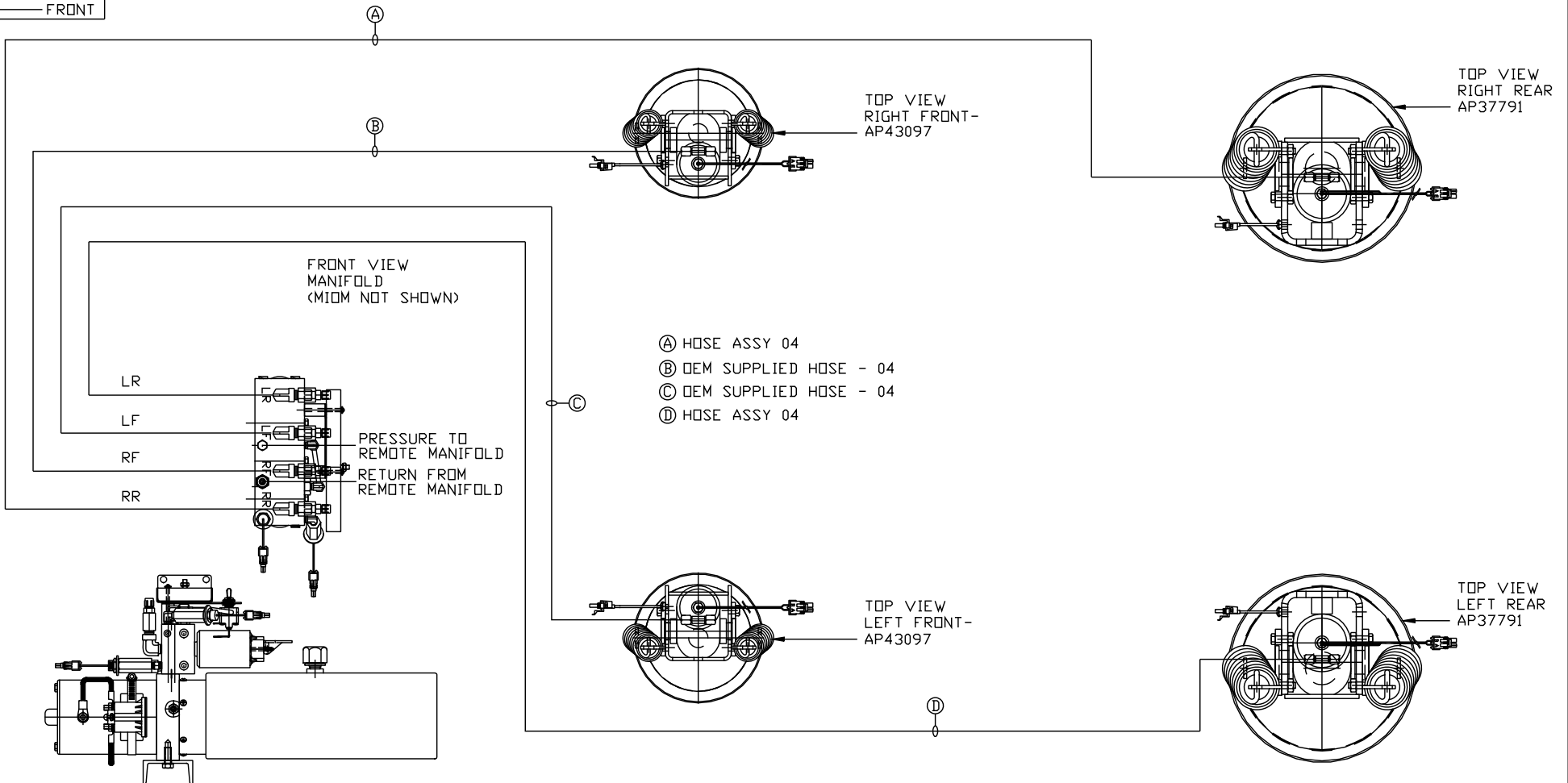


ORIENTATION
← FRONT



SIDE VIEW PUMP/MANIFOLD-AP54558
LOCATION AND ORIENTATION OF PUMP/MANIFOLD ASSEMBLY WILL DIFFER DEPENDING UPON O.E.M.

NOTE: INSTALLATION MUST CONFORM TO GOOD SHOP PRACTICES, SAE STANDARDS, RVIA STANDARDS, AND OTHER APPLICABLE STANDARDS.

LEVELING SYSTEM: AP54291

NO.	DATE	REVISION
THE INFORMATION DISCLOSED ON THIS DRAWING IS CONFIDENTIAL AND MUST NOT BE DISCLOSED OR USED IN ANY MANNER WHICH WILL BE DETRIMENTAL TO THE HWH CORPORATION		

HWH		I-80 EXIT 267 SOUTH RT 1 MOSCOW, IOWA 52760	
SCALE 1:6	DATE 25NOV15	DRAWN BY .	
HYD CONN DIAGRAM			
NEWMAR		DRAWING NUMBER MP70916 A/B	

- Ⓐ HOSE ASSY 04
PRESSURE
- Ⓑ .375" OD NYLON TUBING
RETURN
- Ⓒ HOSE ASSY 03
ROD END - ALWAYS PRESSURIZED
HOSES MUST BE HIGH PRESSURE
HOSES OF EQUAL LENGTH AND DIAMETER
- Ⓓ HOSE ASSY 04
CAP END - HOSES MUST MAINTAIN
EQUAL LENGTH AND DIAMETER
- Ⓚ HOSE ASSY 04
CAP END (LIFT)
- Ⓛ HOSE ASSY 04
CAP END (ROOM)
- Ⓚ HOSE ASSY 04
CAP END (ROOM)
- Ⓛ HOSE ASSY 03 - ROD END (LIFT)
ALWAYS PRESSURIZED
- Ⓜ HOSE ASSY 04
CAP END (LIFT)
- Ⓝ HOSE ASSY 03 - ROD END (LIFT)
ALWAYS PRESSURIZED
- Ⓛ HOSE ASSY 03 - ROD END (LIFT)
ALWAYS PRESSURIZED
- Ⓟ HOSE ASSY 04
CAP END (LIFT)

NOTE: GENERIC VIEWS FOR CLARITY. CYLINDERS MAY BE REVERSED

NOTE: PLUG THIS END WITH PLUG FROM PUMP.
TEE MUST POINT UPWARDS.

ROOM MECHANISM # AP54868
134 1/8" ODS

CYL ASSY (PART OF
PLATFORM ASSY.)
2 USED

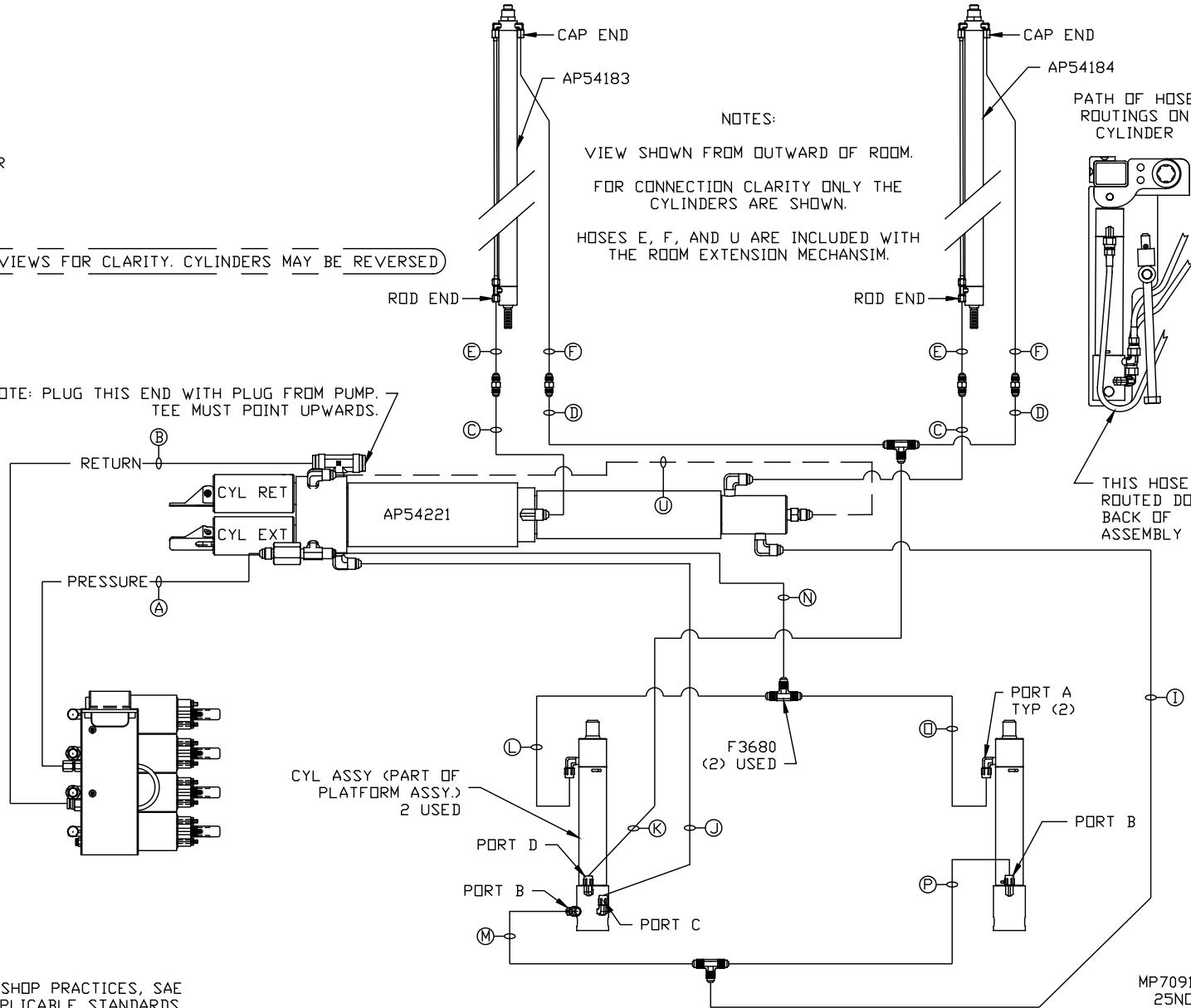
NOTES:
VIEW SHOWN FROM OUTWARD OF ROOM.
FOR CONNECTION CLARITY ONLY THE
CYLINDERS ARE SHOWN.
HOSES E, F, AND U ARE INCLUDED WITH
THE ROOM EXTENSION MECHANISM.

PATH OF HOSE
ROUTINGS ON
CYLINDER

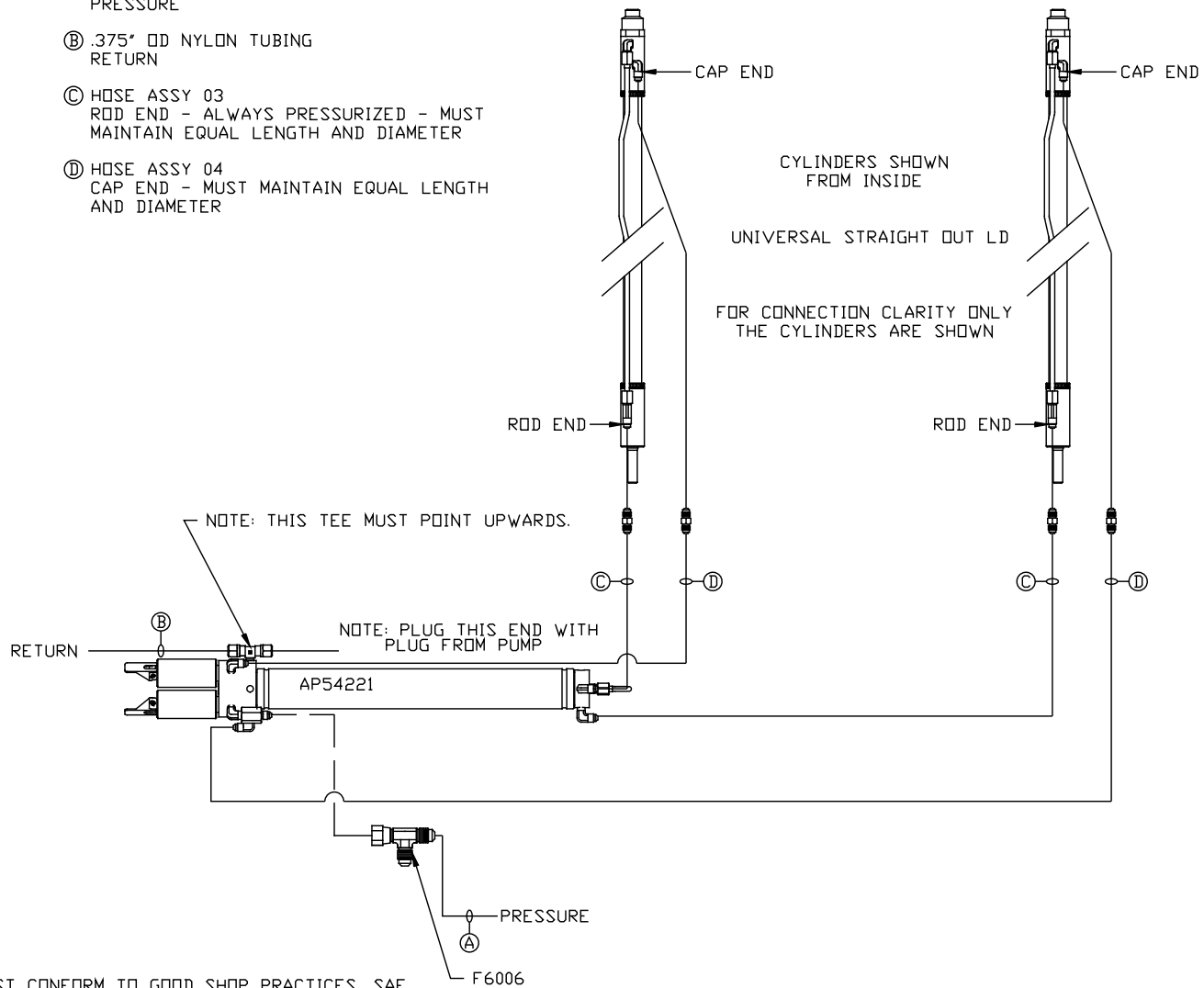
THIS HOSE IS
ROUTED DOWN
BACK OF
ASSEMBLY

NOTE: INSTALLATION MUST CONFORM TO GOOD SHOP PRACTICES, SAE
STANDARDS, RVIA STANDARDS, AND OTHER APPLICABLE STANDARDS.

MP70916 B
25NOV15



- Ⓐ HOSE ASSY 04
PRESSURE
- Ⓑ .375" OD NYLON TUBING
RETURN
- Ⓒ HOSE ASSY 03
ROD END - ALWAYS PRESSURIZED - MUST
MAINTAIN EQUAL LENGTH AND DIAMETER
- Ⓓ HOSE ASSY 04
CAP END - MUST MAINTAIN EQUAL LENGTH
AND DIAMETER



NOTE: INSTALLATION MUST CONFORM TO GOOD SHOP PRACTICES, SAE STANDARDS, RVIA STANDARDS, AND OTHER APPLICABLE STANDARDS.

MP70916 C
25NOV15