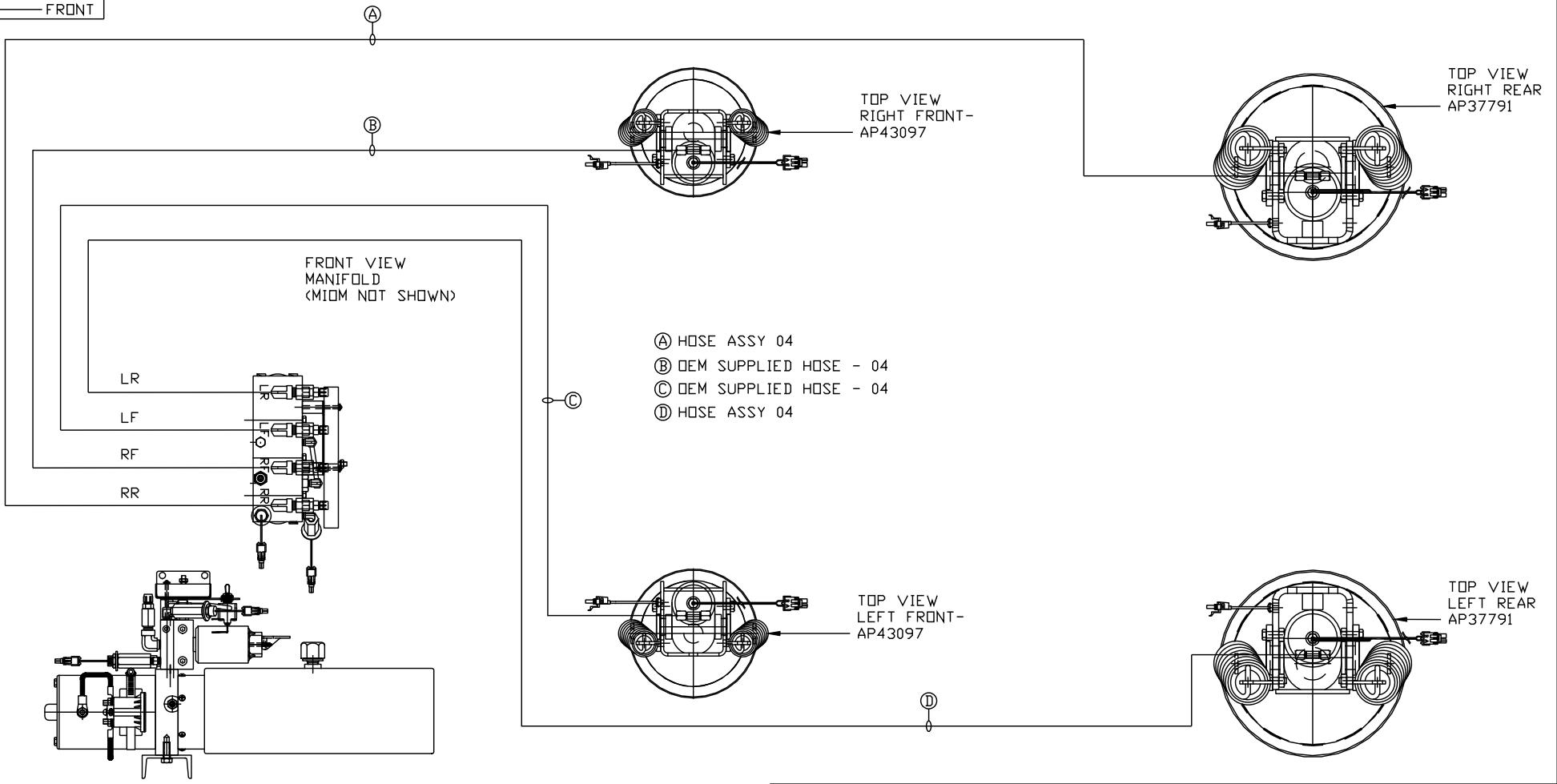


ORIENTATION  
 ← FRONT



- (A) HOSE ASSY 04
- (B) OEM SUPPLIED HOSE - 04
- (C) OEM SUPPLIED HOSE - 04
- (D) HOSE ASSY 04

SIDE VIEW PUMP/MANIFOLD-AP54558

LOCATION AND ORIENTATION OF PUMP/MANIFOLD ASSEMBLY WILL DIFFER DEPENDING UPON O.E.M.

NOTE: INSTALLATION MUST CONFORM TO GOOD SHOP PRACTICES, SAE STANDARDS, RVIA STANDARDS, AND OTHER APPLICABLE STANDARDS.

LEVELING SYSTEM: AP54291

NO.	DATE	REVISION

HWH I-80 EXIT 267 SOUTH  
 RT 1 MOSCOW, IOWA 52760  
 SCALE 1:6 DATE 25NOV15 DRAWN BY .

HYD CONN DIAGRAM

THE INFORMATION DISCLOSED ON THIS DRAWING IS CONFIDENTIAL AND MUST NOT BE DISCLOSED OR USED IN ANY MANNER WHICH WILL BE DETRIMENTAL TO THE HWH CORPORATION

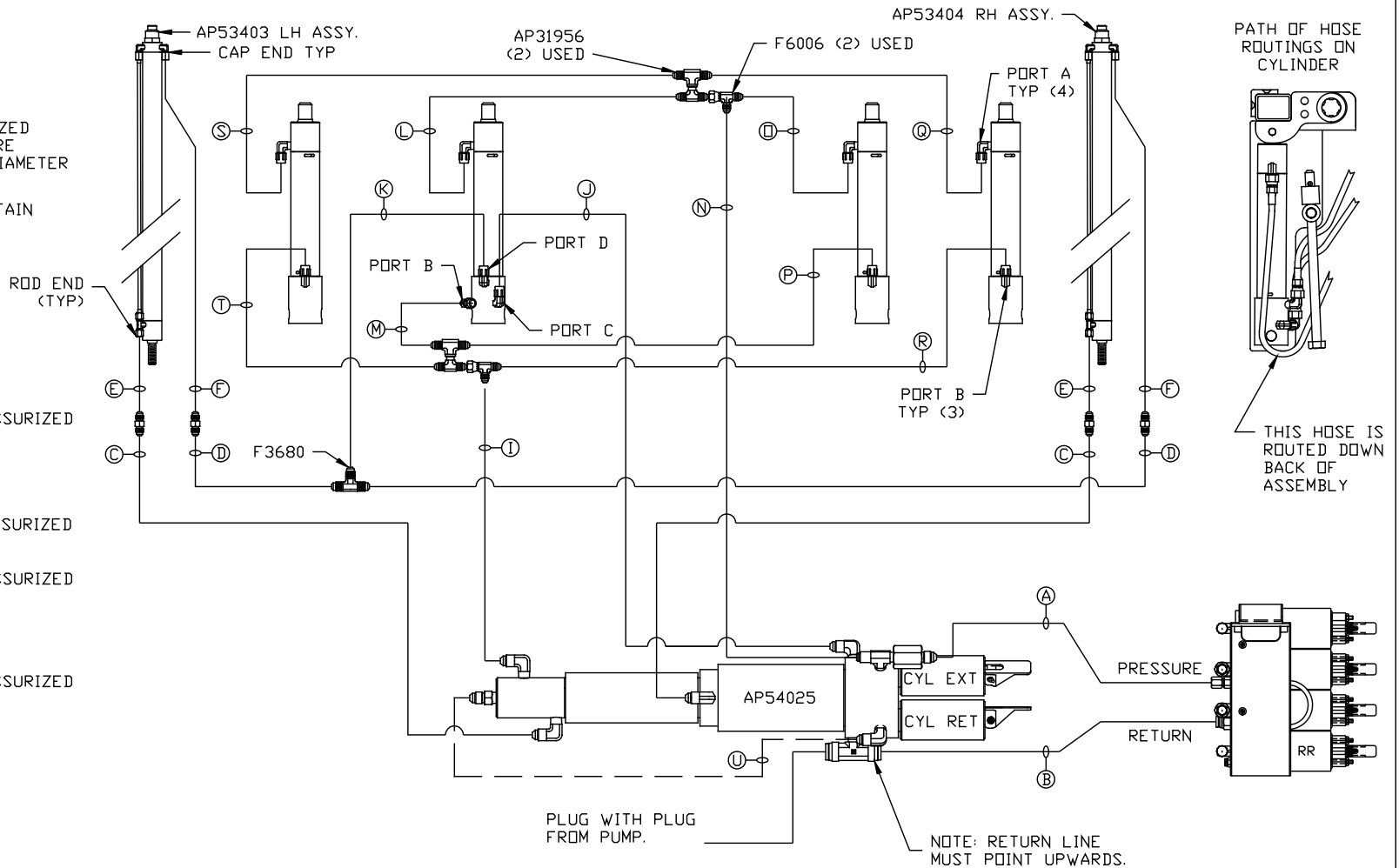
NEWMAR

DRAWING NUMBER  
 MP70918 A/B

- Ⓐ AP HOSE ASSY 04  
PRESSURE
- Ⓑ P .375" OD NYLON TUBING  
RETURN
- Ⓒ AP HOSE ASSY 03  
ROD END - ALWAYS PRESSURIZED  
HOSES MUST BE HIGH PRESSURE  
AND OF EQUAL LENGTH AND DIAMETER
- Ⓓ AP HOSE ASSY 04  
CAP END - HOSES MUST MAINTAIN  
EQUAL LENGTH AND DIAMETER
- Ⓛ AP HOSE ASSY 04  
CAP END (LIFT) WAS AP4060
- Ⓜ AP HOSE ASSY 04  
CAP END (ROOM)
- Ⓚ AP HOSE ASSY 03  
CAP END (ROOM)
- Ⓛ AP HOSE ASSY 03  
ROD END (LIFT) ALWAYS PRESSURIZED
- Ⓜ AP HOSE ASSY 04  
CAP END (LIFT)
- Ⓝ AP HOSE ASSY 03  
ROD END (LIFT) ALWAYS PRESSURIZED
- Ⓟ AP HOSE ASSY 04  
CAP END (LIFT)
- Ⓠ AP HOSE ASSY 03  
ROD END (LIFT) ALWAYS PRESSURIZED
- Ⓡ AP HOSE ASSY 04  
CAP END (LIFT)
- Ⓢ AP HOSE ASSY 03  
ROD END (LIFT)  
ALWAYS PRESSURIZED
- Ⓣ AP HOSE ASSY 04  
CAP END (LIFT)

ROOM MECHANISM # AP55588  
302 5/8" PLATFORM ODS

NOTE: INSTALLATION MUST CONFORM TO GOOD SHOP PRACTICES, SAE STANDARDS, RVIA STANDARDS, AND OTHER APPLICABLE STANDARDS.



NOTES:

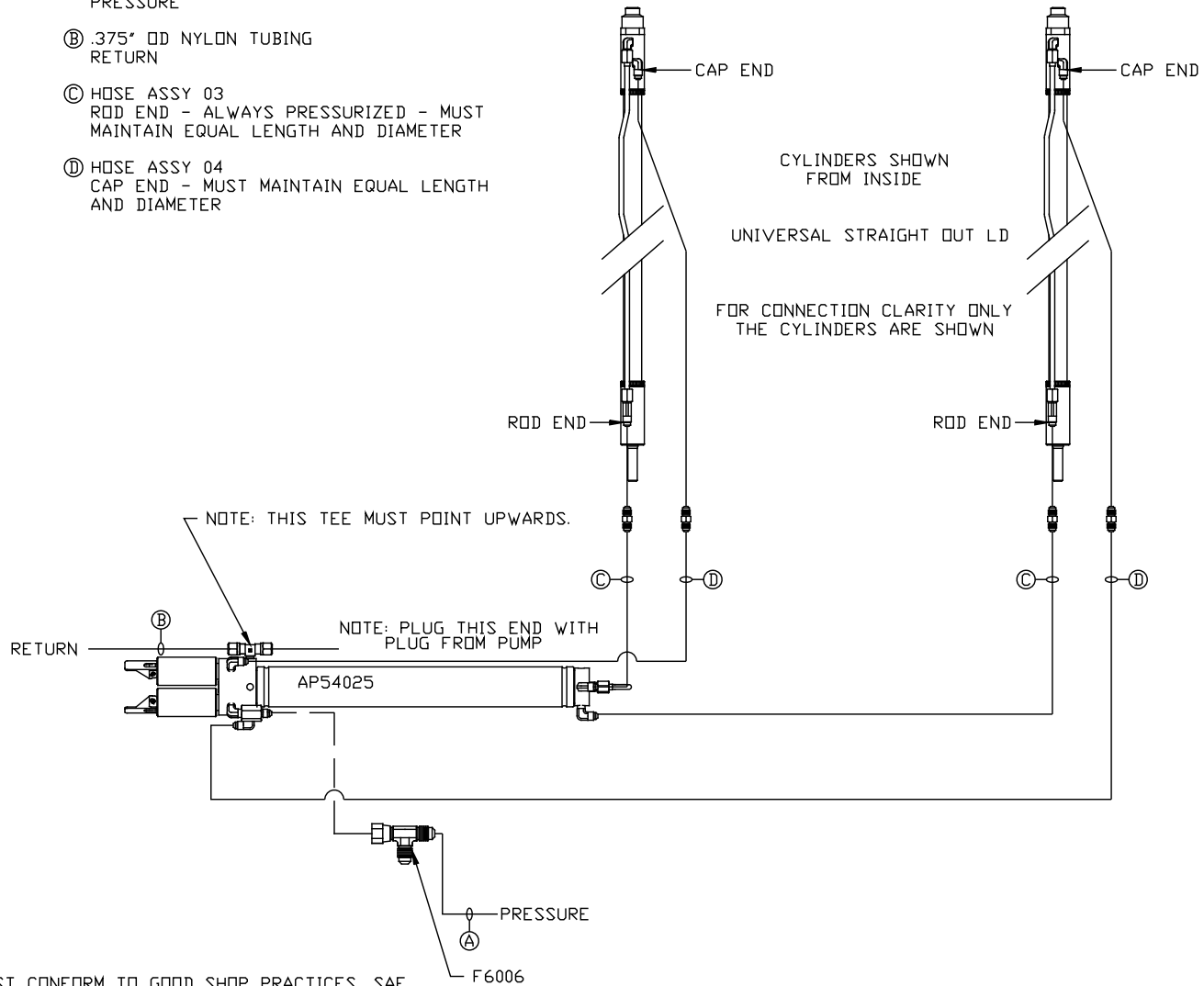
LH AND RH LABELED AS VIEWD FROM OUTSIDE OF ROOM.

FOR CONNECTION CLARITY ONLY THE CYLINDERS ARE SHOWN.

HOSES E, F, AND U ARE INCLUDED WITH THE ROOM EXTENSION MECHANISM.

MP70918 B  
25NOV15

- Ⓐ HOSE ASSY 04  
PRESSURE
- Ⓑ .375" OD NYLON TUBING  
RETURN
- Ⓒ HOSE ASSY 03  
ROD END - ALWAYS PRESSURIZED - MUST  
MAINTAIN EQUAL LENGTH AND DIAMETER
- Ⓓ HOSE ASSY 04  
CAP END - MUST MAINTAIN EQUAL LENGTH  
AND DIAMETER



NOTE: INSTALLATION MUST CONFORM TO GOOD SHOP PRACTICES, SAE STANDARDS, RVIA STANDARDS, AND OTHER APPLICABLE STANDARDS.