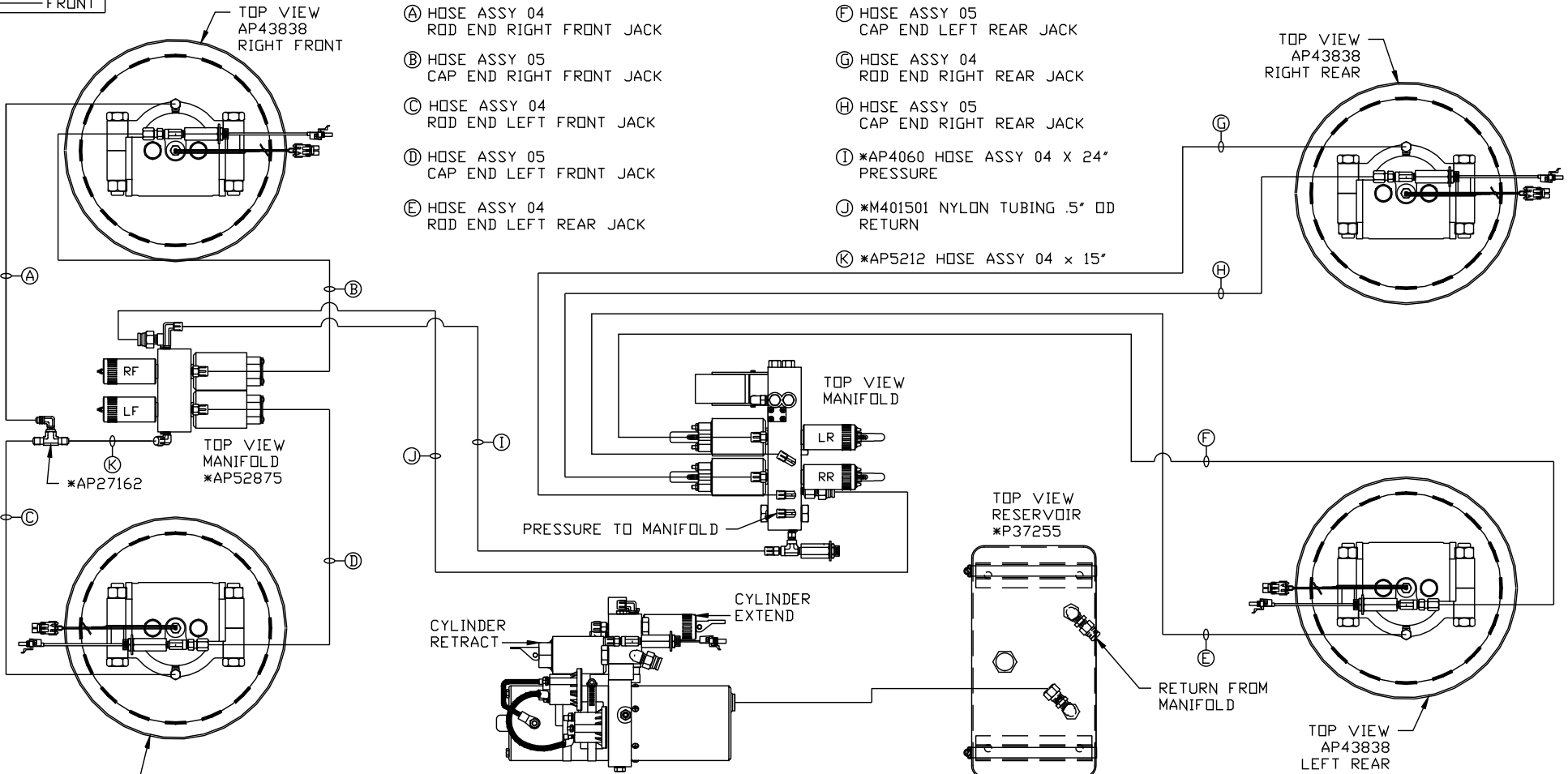


ORIENTATION
← FRONT



- (A) HOSE ASSY 04
ROD END RIGHT FRONT JACK
- (B) HOSE ASSY 05
CAP END RIGHT FRONT JACK
- (C) HOSE ASSY 04
ROD END LEFT FRONT JACK
- (D) HOSE ASSY 05
CAP END LEFT FRONT JACK
- (E) HOSE ASSY 04
ROD END LEFT REAR JACK

- (F) HOSE ASSY 05
CAP END LEFT REAR JACK
- (G) HOSE ASSY 04
ROD END RIGHT REAR JACK
- (H) HOSE ASSY 05
CAP END RIGHT REAR JACK
- (I) *AP4060 HOSE ASSY 04 X 24"
PRESSURE
- (J) *M401501 NYLON TUBING .5" OD
RETURN
- (K) *AP5212 HOSE ASSY 04 X 15"

SIDE VIEW OF PUMP/MANIFOLD-*AP52881
LOCATION AND ORIENTATION OF
PUMP/MANIFOLD ASSEMBLY WILL
DIFFER DEPENDING UPON O.E.M.
* NOTE: PART OF AP55057 POWER CONTROL

NO.	DATE	REVISION
THE INFORMATION DISCLOSED ON THIS DRAWING IS CONFIDENTIAL AND MUST NOT BE DISCLOSED OR USED IN ANY MANNER WHICH WILL BE DETRIMENTAL TO THE HWH CORPORATION		

HWH I-80 EXIT 267 SOUTH
RT 1 MOSCOW, IOWA 52760

SCALE 1:6 DATE 09MAY16 DRAWN BY .

HYD CONN DIAGRAM

MDW

DRAWING NUMBER
MP70989 A/C

NOTE: INSTALLATION MUST CONFORM TO GOOD SHOP PRACTICES, SAE STANDARDS, RVIA STANDARDS, AND OTHER APPLICABLE STANDARDS.

LEVELING SYSTEM: AP55936

Ⓐ HOSE ASSY 04
ROD END - ALWAYS PRESSURIZED

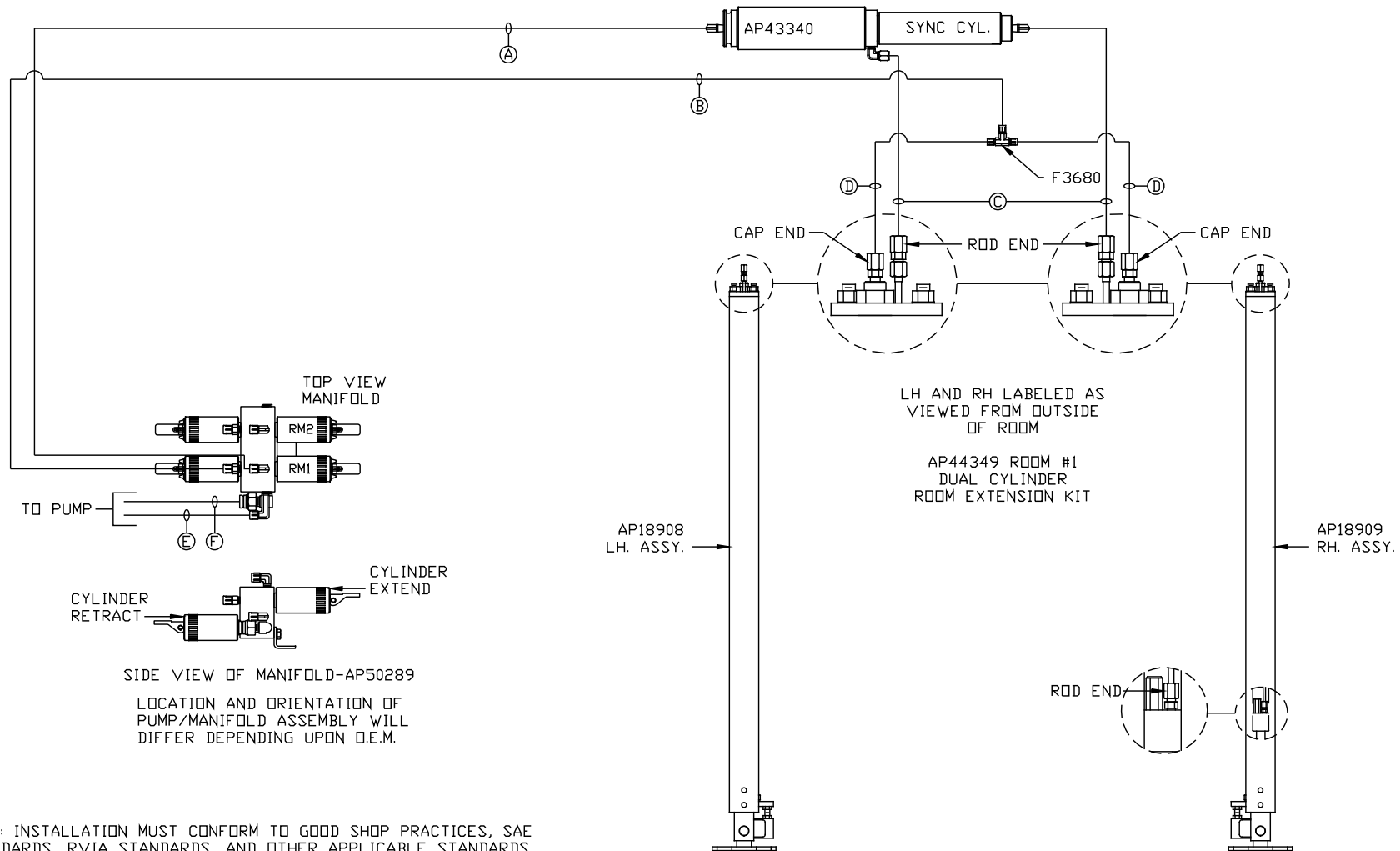
Ⓑ HOSE ASSY 04
CAP END

Ⓒ HOSE ASSY 03
ROD END - ALWAYS PRESSURIZED
HOSES MUST MAINTAIN EQUAL LENGTH
AND DIAMETER

Ⓓ HOSE ASSY 04
CAP END - HOSES MUST MAINTAIN
EQUAL LENGTH AND DIAMETER

Ⓔ HOSE ASSY 04
PRESSURE

Ⓕ .375 OD NYLON TUBING
RETURN



NOTE: INSTALLATION MUST CONFORM TO GOOD SHOP PRACTICES, SAE STANDARDS, RVIA STANDARDS, AND OTHER APPLICABLE STANDARDS.

MP70989 B/C
09MAY16

Ⓐ HOSE ASSY 04
ROD END - ALWAYS PRESSURIZED

Ⓑ HOSE ASSY 04
CAP END

Ⓒ HOSE ASSY 03
ROD END - ALWAYS PRESSURIZED
HOSES MUST MAINTAIN EQUAL LENGTH
AND DIAMETER

Ⓓ HOSE ASSY 04
CAP END - HOSES MUST MAINTAIN
EQUAL LENGTH AND DIAMETER

