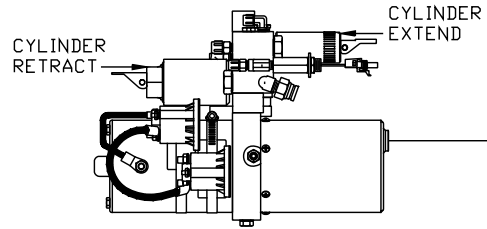
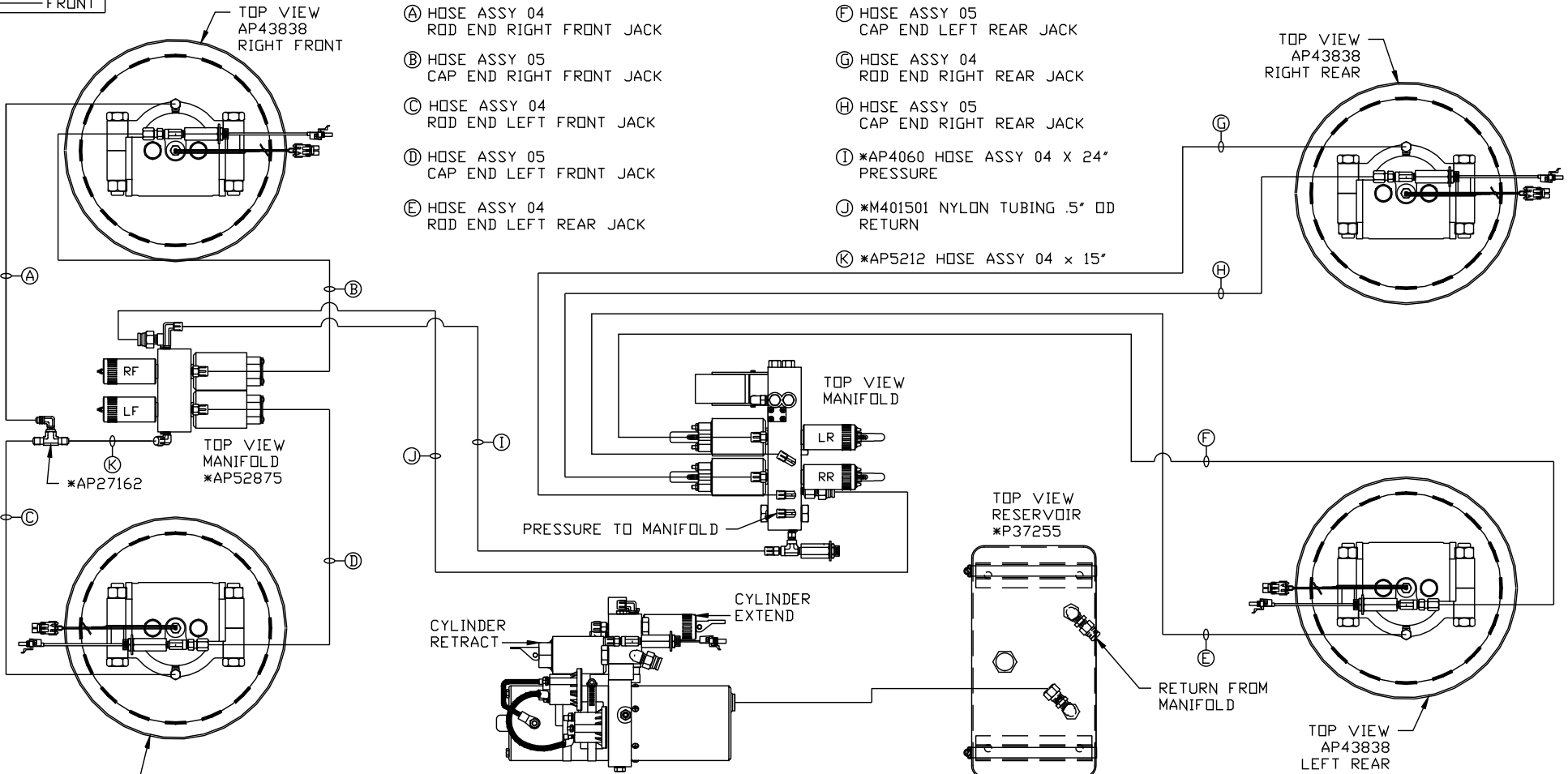


ORIENTATION
← FRONT



SIDE VIEW OF PUMP/MANIFOLD-*AP52881
 LOCATION AND ORIENTATION OF PUMP/MANIFOLD ASSEMBLY WILL DIFFER DEPENDING UPON O.E.M.
 * NOTE: PART OF AP55057 POWER CONTROL

NOTE: INSTALLATION MUST CONFORM TO GOOD SHOP PRACTICES, SAE STANDARDS, RVIA STANDARDS, AND OTHER APPLICABLE STANDARDS.

LEVELING SYSTEM: AP56610

NO.	DATE	REVISION
THE INFORMATION DISCLOSED ON THIS DRAWING IS CONFIDENTIAL AND MUST NOT BE DISCLOSED OR USED IN ANY MANNER WHICH WILL BE DETRIMENTAL TO THE HWH CORPORATION		

HWH I-80 EXIT 267 SOUTH
 RT 1 MOSCOW, IOWA 52760

SCALE 1:6 DATE 09MAY16 DRAWN BY .

HYD CONN DIAGRAM

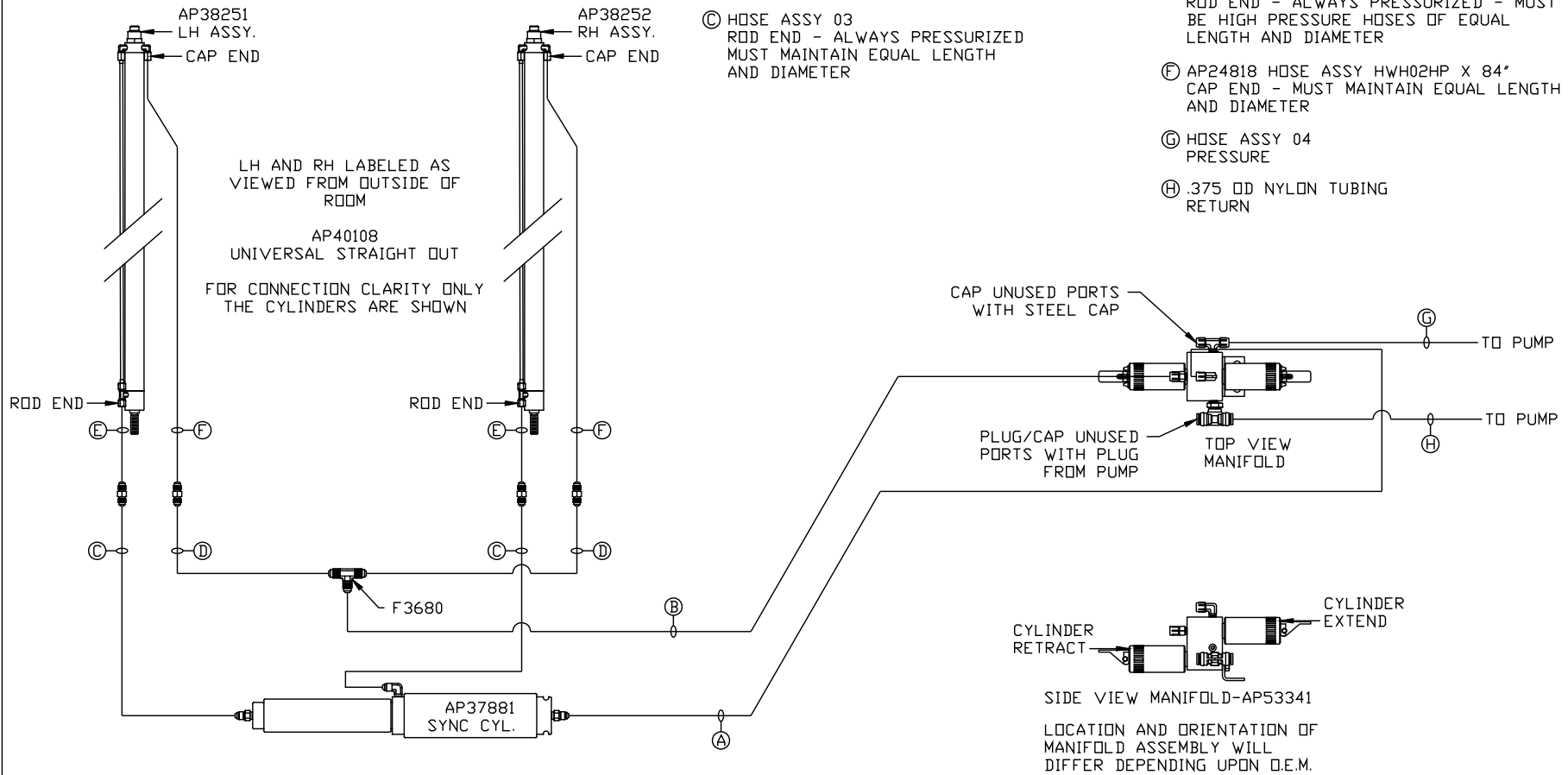
MDW

DRAWING NUMBER
 MP70993 A/B

NOTE: HOSES (C) AND (F) ARE INCLUDED WITH THE ROOM EXTENSION MECHANISM

- (A) HOSE ASSY 04
ROD END - ALWAYS PRESSURIZED
- (B) HOSE ASSY 04
CAP END
- (C) HOSE ASSY 03
ROD END - ALWAYS PRESSURIZED
MUST MAINTAIN EQUAL LENGTH AND DIAMETER

- (D) HOSE ASSY 04
CAP END - MUST MAINTAIN EQUAL LENGTH AND DIAMETER
- (E) AP24632 HOSE ASSY HWH02HP X 48"
ROD END - ALWAYS PRESSURIZED - MUST BE HIGH PRESSURE HOSES OF EQUAL LENGTH AND DIAMETER
- (F) AP24818 HOSE ASSY HWH02HP X 84"
CAP END - MUST MAINTAIN EQUAL LENGTH AND DIAMETER
- (G) HOSE ASSY 04
PRESSURE
- (H) .375 OD NYLON TUBING
RETURN



NOTE: INSTALLATION MUST CONFORM TO GOOD SHOP PRACTICES, SAE STANDARDS, RVIA STANDARDS, AND OTHER APPLICABLE STANDARDS.

MP70993 B/B
09MAY16