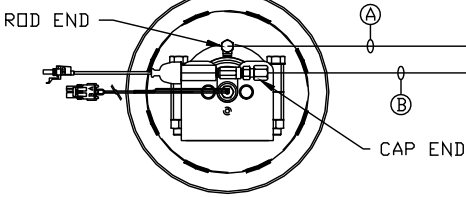
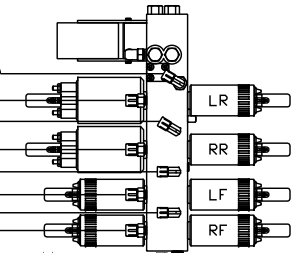


ORIENTATION
← FRONT

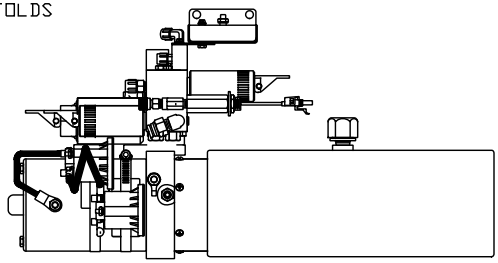
TOP VIEW
AP46030
RIGHT FRONT



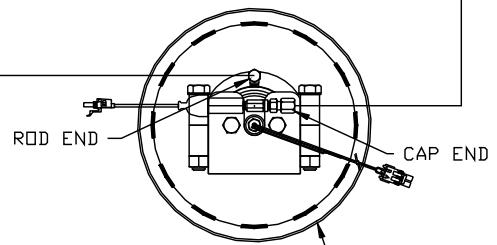
TOP VIEW-MANIFOLD
(MIDM NOT SHOWN)



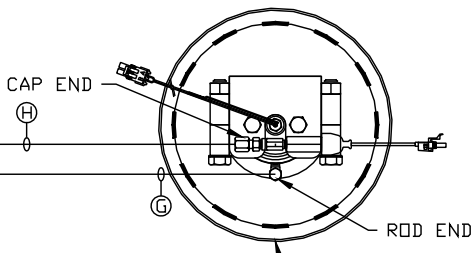
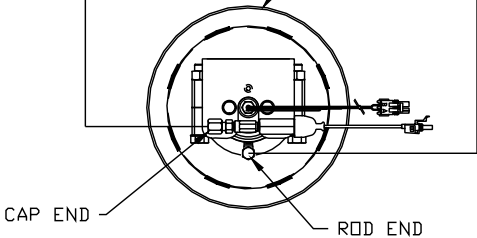
RETURN FROM
REMOTE MANIFOLDS
PRESSURE TO
REMOTE MANIFOLDS



LOCATION AND ORIENTATION OF
PUMP/MANIFOLD ASSEMBLY WILL
DIFFER DEPENDING UPON O.E.M.



TOP VIEW
AP46030
LEFT FRONT



- Ⓐ AP5924 HOSE ASSY 04 x 228" - RF ROD END
- Ⓑ AP31034 HOSE ASSY 05 x 228" - RF CAP END
- Ⓒ AP6216 HOSE ASSY 04 x 264" - LF ROD END
- Ⓓ AP24985 HOSE ASSY 05 x 264" - LF CAP END
- Ⓔ AP5924 HOSE ASSY 04 x 228" - RR ROD END
- Ⓕ AP31034 HOSE ASSY 05 x 228" - RR CAP END
- Ⓖ AP6216 HOSE ASSY 04 x 264" - LR ROD END
- Ⓗ AP24985 HOSE ASSY 05 x 264" - LR CAP END

NOTE: INSTALLATION MUST CONFORM TO GOOD SHOP PRACTICES, SAE STANDARDS, RVIA STANDARDS, AND OTHER APPLICABLE STANDARDS.

LEVELING SYSTEM: AP56595

NO.	DATE	REVISION
THE INFORMATION DISCLOSED ON THIS DRAWING IS CONFIDENTIAL AND MUST NOT BE DISCLOSED OR USED IN ANY MANNER WHICH WILL BE DETRIMENTAL TO THE HWH CORPORATION		

HWH I-80 EXIT 267 SOUTH
RT 1 MOSCOW, IOWA 52760

SCALE 1:6 DATE 02MAY16 DRAWN BY .

HYD CONN DIAGRAM

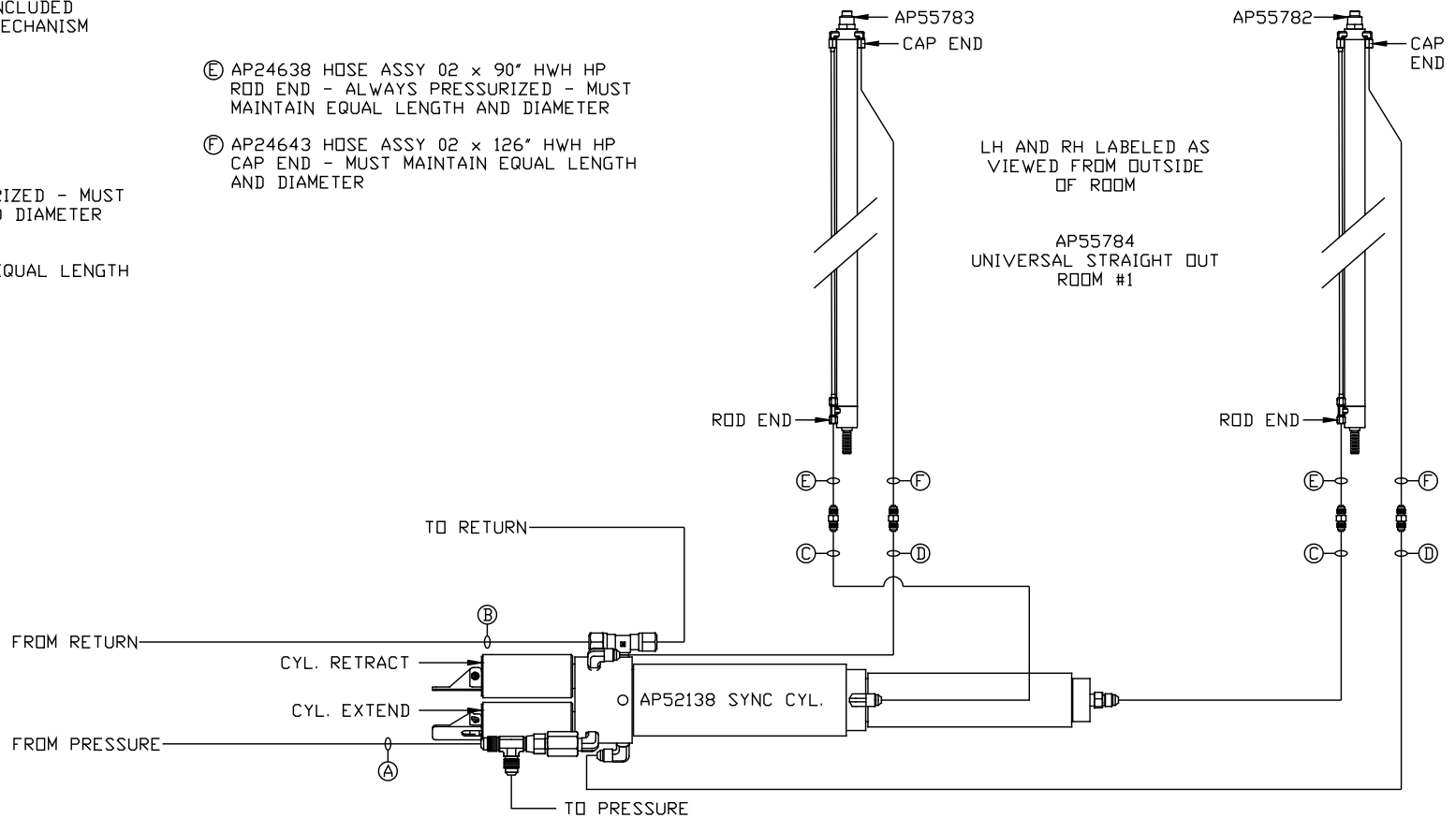
FARBER

DRAWING NUMBER
MP70994 A/C

NOTE: HOSES (E) AND (F) ARE INCLUDED WITH THE ROOM EXTENSION MECHANISM

- (A) HOSE ASSY 04
PRESSURE
- (B) .375" TUBING
RETURN
- (C) HOSE ASSY 03
ROD END - ALWAYS PRESSURIZED - MUST MAINTAIN EQUAL LENGTH AND DIAMETER
- (D) HOSE ASSY 04
CAP END - MUST MAINTAIN EQUAL LENGTH AND DIAMETER

- (E) AP24638 HOSE ASSY 02 x 90" HWH HP
ROD END - ALWAYS PRESSURIZED - MUST MAINTAIN EQUAL LENGTH AND DIAMETER
- (F) AP24643 HOSE ASSY 02 x 126" HWH HP
CAP END - MUST MAINTAIN EQUAL LENGTH AND DIAMETER



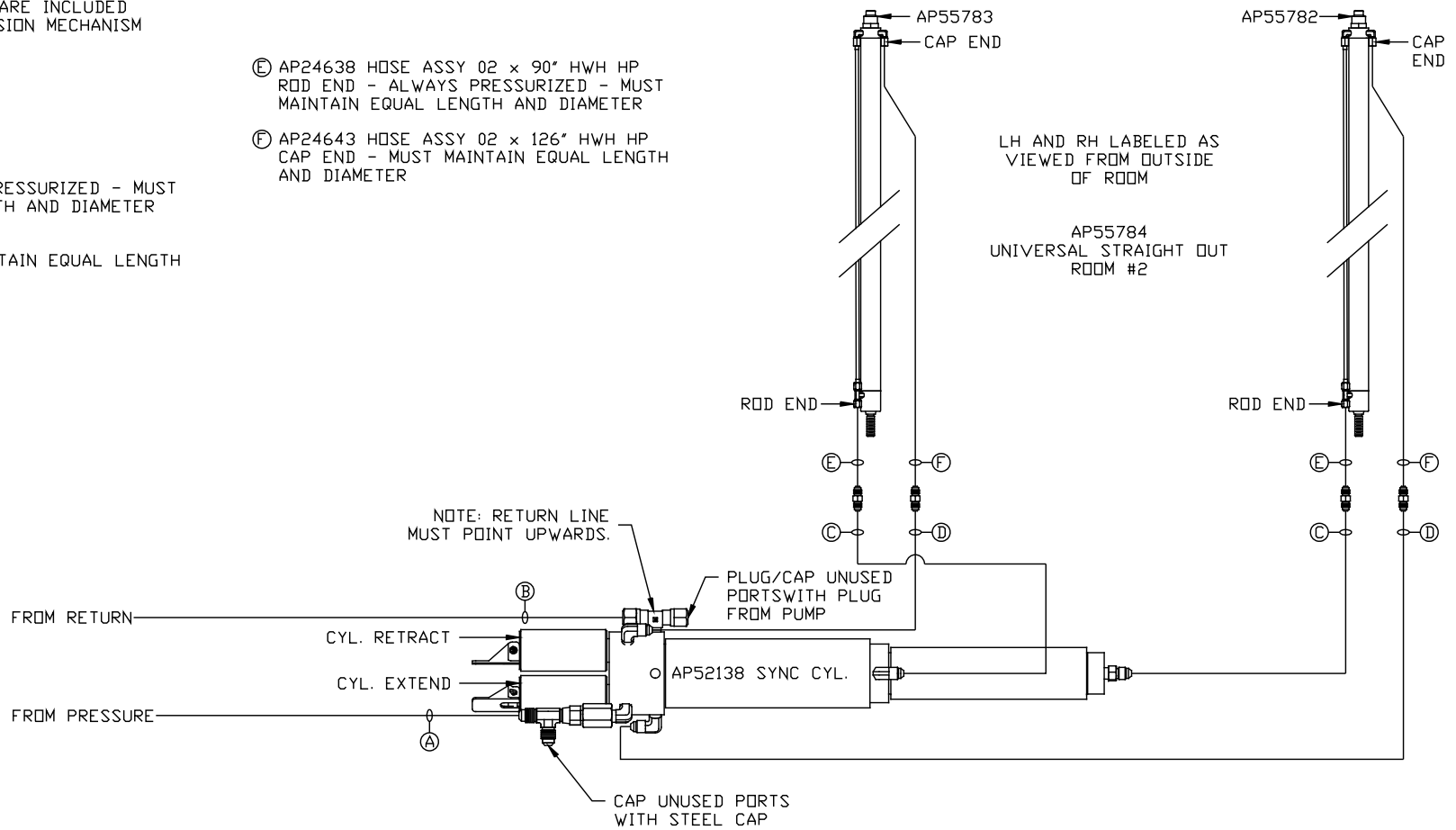
NOTE: INSTALLATION MUST CONFORM TO GOOD SHOP PRACTICES, SAE STANDARDS, RVIA STANDARDS, AND OTHER APPLICABLE STANDARDS.

MP70994 B/C
02MAY16

NOTE: HOSES (E) AND (F) ARE INCLUDED WITH THE ROOM EXTENSION MECHANISM

- (A) HOSE ASSY 04
PRESSURE
- (B) .375" TUBING
RETURN
- (C) HOSE ASSY 03
ROD END - ALWAYS PRESSURIZED - MUST MAINTAIN EQUAL LENGTH AND DIAMETER
- (D) HOSE ASSY 04
CAP END - MUST MAINTAIN EQUAL LENGTH AND DIAMETER

- (E) AP24638 HOSE ASSY 02 x 90" HWH HP
ROD END - ALWAYS PRESSURIZED - MUST MAINTAIN EQUAL LENGTH AND DIAMETER
- (F) AP24643 HOSE ASSY 02 x 126" HWH HP
CAP END - MUST MAINTAIN EQUAL LENGTH AND DIAMETER



NOTE: INSTALLATION MUST CONFORM TO GOOD SHOP PRACTICES, SAE STANDARDS, RVIA STANDARDS, AND OTHER APPLICABLE STANDARDS.

MP70994 C/C
02MAY16