

SIDE VIEW PUMP/MANIFOLD-AP53482

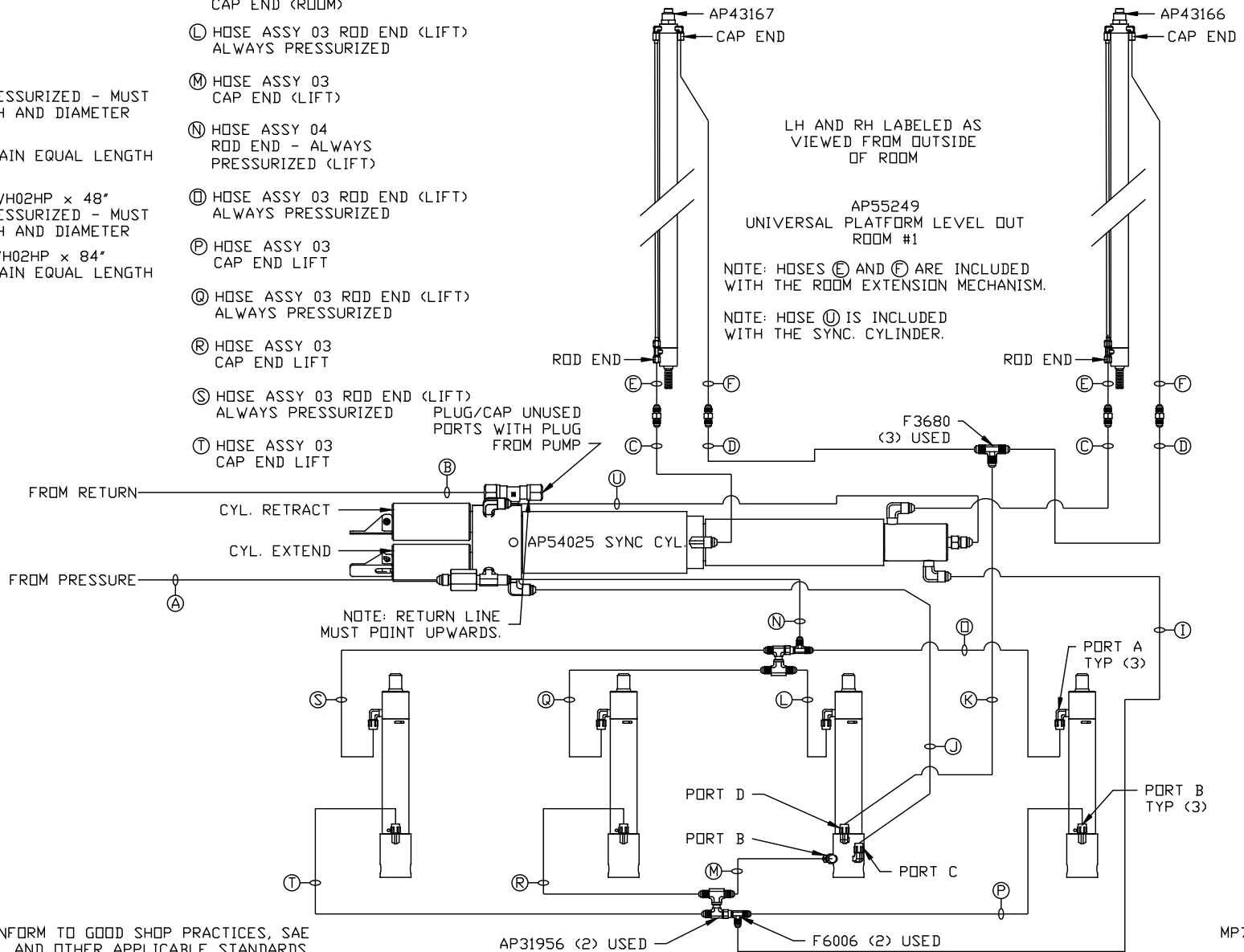
LOCATION AND ORIENTATION OF  
PUMP/MANIFOLD ASSEMBLY WILL  
DIFFER DEPENDING UPON O.E.M.

NOTE: INSTALLATION MUST CONFORM TO GOOD SHOP PRACTICES, SAE STANDARDS, RVIA STANDARDS, AND OTHER APPLICABLE STANDARDS.

			HWH I-80 EXIT 267 SOUTH RT 1 MOSCOW, IOWA 52760	
			SCALE 1:6	DATE 10MAY16
			DRAWN BY .	
			HYD CONN DIAGRAM	
NO.	DATE	REVISION		
THE INFORMATION DISCLOSED ON THIS DRAWING IS CONFIDENTIAL AND MUST NOT BE DISCLOSED OR USED IN ANY MANNER WHICH WILL BE DETRIMENTAL TO THE HWH CORPORATION			LIFELINE	DRAWING NUMBER MP70998 A/B

- (A) HOSE ASSY 04  
PRESSURE
- (B) .375" OD NYLON TUBING  
RETURN
- (C) HOSE ASSY 03  
ROD END - ALWAYS PRESSURIZED - MUST  
MAINTAIN EQUAL LENGTH AND DIAMETER
- (D) HOSE ASSY 04  
CAP END - MUST MAINTAIN EQUAL LENGTH  
AND DIAMETER
- (E) AP24632 HOSE ASSY HWH02HP x 48"  
ROD END - ALWAYS PRESSURIZED - MUST  
MAINTAIN EQUAL LENGTH AND DIAMETER
- (F) AP24818 HOSE ASSY HWH02HP x 84"  
CAP END - MUST MAINTAIN EQUAL LENGTH  
AND DIAMETER
- (I) HOSE ASSY 04  
CAP END (LIFT)
- (J) HOSE ASSY 03  
CAP END (ROOM)

- (K) HOSE ASSY 03  
CAP END (ROOM)
- (L) HOSE ASSY 03 ROD END (LIFT)  
ALWAYS PRESSURIZED
- (M) HOSE ASSY 03  
CAP END (LIFT)
- (N) HOSE ASSY 04  
ROD END - ALWAYS  
PRESSURIZED (LIFT)
- (O) HOSE ASSY 03 ROD END (LIFT)  
ALWAYS PRESSURIZED
- (P) HOSE ASSY 03  
CAP END LIFT
- (Q) HOSE ASSY 03 ROD END (LIFT)  
ALWAYS PRESSURIZED
- (R) HOSE ASSY 03  
CAP END LIFT
- (S) HOSE ASSY 03 ROD END (LIFT)  
ALWAYS PRESSURIZED
- (T) HOSE ASSY 03  
CAP END LIFT



NOTE: INSTALLATION MUST CONFORM TO GOOD SHOP PRACTICES, SAE STANDARDS, RVIA STANDARDS, AND OTHER APPLICABLE STANDARDS.

MP70998 B/B  
10MAY16