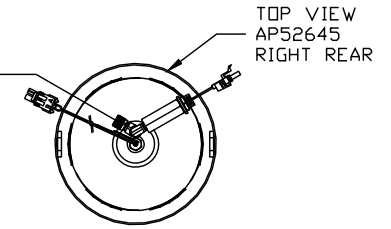
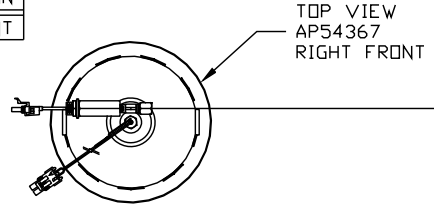
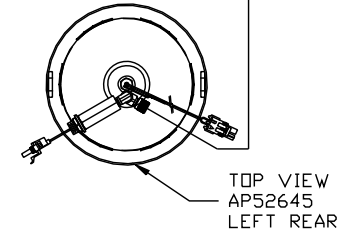
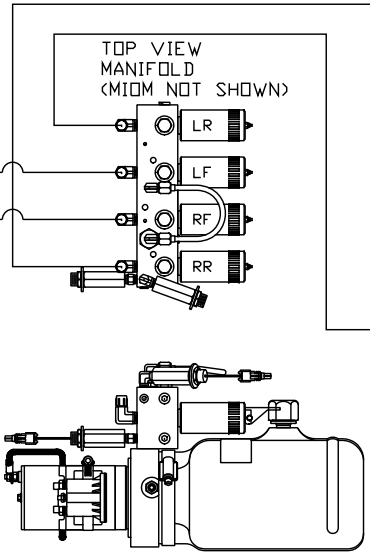
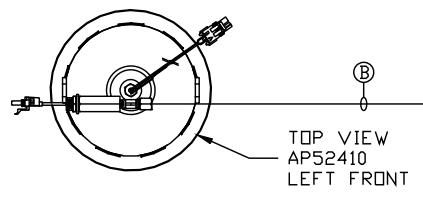


ORIENTATION  
← FRONT



- Ⓐ AP50766 HOSE ASSY 03 x 96"
- Ⓑ AP51456 HOSE ASSY 03 x 192"
- Ⓒ AP51457 HOSE ASSY 03 x 288"
- Ⓓ AP50911 HOSE ASSY 03 x 240"

CROSS TIE REQUIRED  
FOR FRONT AND REAR JACKS.



LOCATION AND ORIENTATION OF  
PUMP/MANIFOLD ASSEMBLY WILL  
DIFFER DEPENDING UPON O.E.M.

NOTE: INSTALLATION MUST CONFORM TO GOOD SHOP PRACTICES, SAE STANDARDS, RVIA STANDARDS, AND OTHER APPLICABLE STANDARDS.

LEVELING SYSTEM: AP58811

|     |      |          |
|-----|------|----------|
|     |      |          |
|     |      |          |
|     |      |          |
|     |      |          |
| NO. | DATE | REVISION |

THE INFORMATION DISCLOSED ON THIS DRAWING IS CONFIDENTIAL AND MUST NOT BE DISCLOSED OR USED IN ANY MANNER WHICH WILL BE DETRIMENTAL TO THE HWH CORPORATION

|                  |              |            |                                                |                           |  |
|------------------|--------------|------------|------------------------------------------------|---------------------------|--|
| HWH              |              |            | I-80 EXIT 267 SOUTH<br>RT 1 MOSCOW, IOWA 52760 |                           |  |
| SCALE 1:6        | DATE 18APR18 | DRAWN BY . |                                                |                           |  |
| HYD CONN DIAGRAM |              |            |                                                |                           |  |
| WINNEBAGO        |              |            |                                                | DRAWING NUMBER<br>MP71174 |  |