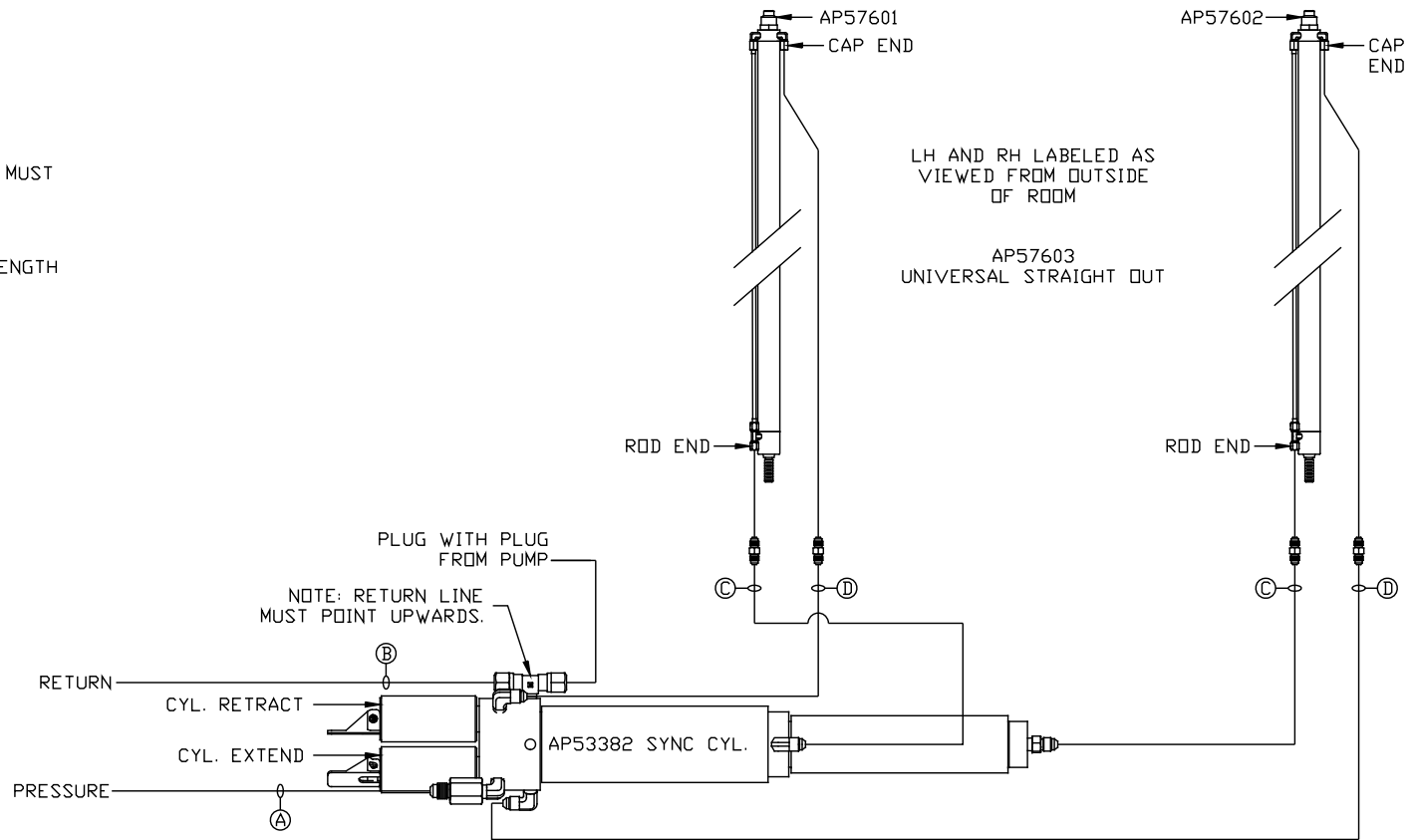


- Ⓐ HOSE ASSY 04
PRESSURE
- Ⓑ .375" OD NYLON TUBING
RETURN
- Ⓒ HOSE ASSY 03
ROD END - ALWAYS PRESSURIZED - MUST
BE HIGH PRESSURE HOSES OF EQUAL
LENGTH AND DIAMETER
- Ⓓ HOSE ASSY 04
CAP END - MUST MAINTAIN EQUAL LENGTH
AND DIAMETER



*NOTE: ISOLATED PRESSURE IF
AVAILABLE, SEE LEVELING
SYSTEM DIAGRAM

| | | | | |
|--|------|----------|-------------------------|--|
| | | | HWH | I-80 EXIT 267 SOUTH RT 1 MOSCOW, IOWA 52760 |
| | | | SCALE 1:6 | DATE 13FEB20 |
| | | | DRAWN BY . | |
| NO. | DATE | REVISION | HYD CONN DIAGRAM | |
| THE INFORMATION DISCLOSED ON THIS DRAWING IS CONFIDENTIAL AND MUST NOT BE DISCLOSED OR USED IN ANY MANNER WHICH WILL BE DETRIMENTAL TO THE HWH CORPORATION | | | NEWMAR | DRAWING NUMBER MP71279 |

NOTE: INSTALLATION MUST CONFORM TO GOOD SHOP PRACTICES, SAE STANDARDS, RVIA STANDARDS, AND OTHER APPLICABLE STANDARDS.