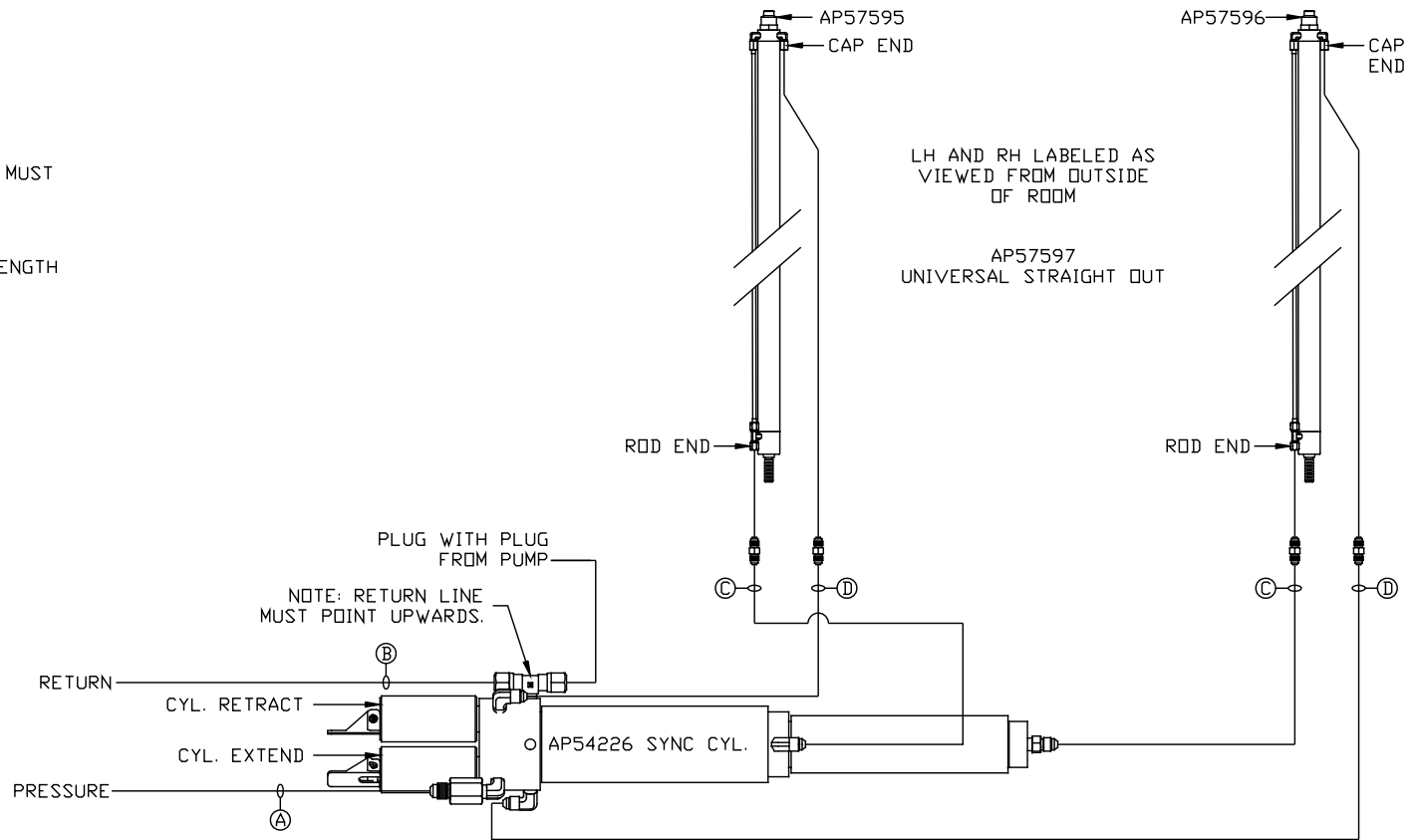


- Ⓐ HOSE ASSY 04
PRESSURE
- Ⓑ .375" OD NYLON TUBING
RETURN
- Ⓒ HOSE ASSY 03
ROD END - ALWAYS PRESSURIZED - MUST
BE HIGH PRESSURE HOSES OF EQUAL
LENGTH AND DIAMETER
- Ⓓ HOSE ASSY 04
CAP END - MUST MAINTAIN EQUAL LENGTH
AND DIAMETER



LH AND RH LABELED AS
VIEWED FROM OUTSIDE
OF ROOM

AP57597
UNIVERSAL STRAIGHT OUT

PLUG WITH PLUG
FROM PUMP
NOTE: RETURN LINE
MUST POINT UPWARDS.

*NOTE: ISOLATED PRESSURE IF
AVAILABLE, SEE LEVELING
SYSTEM DIAGRAM

NOTE: INSTALLATION MUST CONFORM TO GOOD SHOP PRACTICES, SAE
STANDARDS, RVIA STANDARDS, AND OTHER APPLICABLE STANDARDS.

			HWH I-80 EXIT 267 SOUTH RT 1 MOSCOW, IOWA 52760		
SCALE 1:6		DATE 13FEB20	DRAWN BY .		
NO. DATE REVISION			HYD CONN DIAGRAM		
THE INFORMATION DISCLOSED ON THIS DRAWING IS CONFIDENTIAL AND MUST NOT BE DISCLOSED OR USED IN ANY MANNER WHICH WILL BE DETRIMENTAL TO THE HWH CORPORATION			NEWMAR		DRAWING NUMBER MP71280