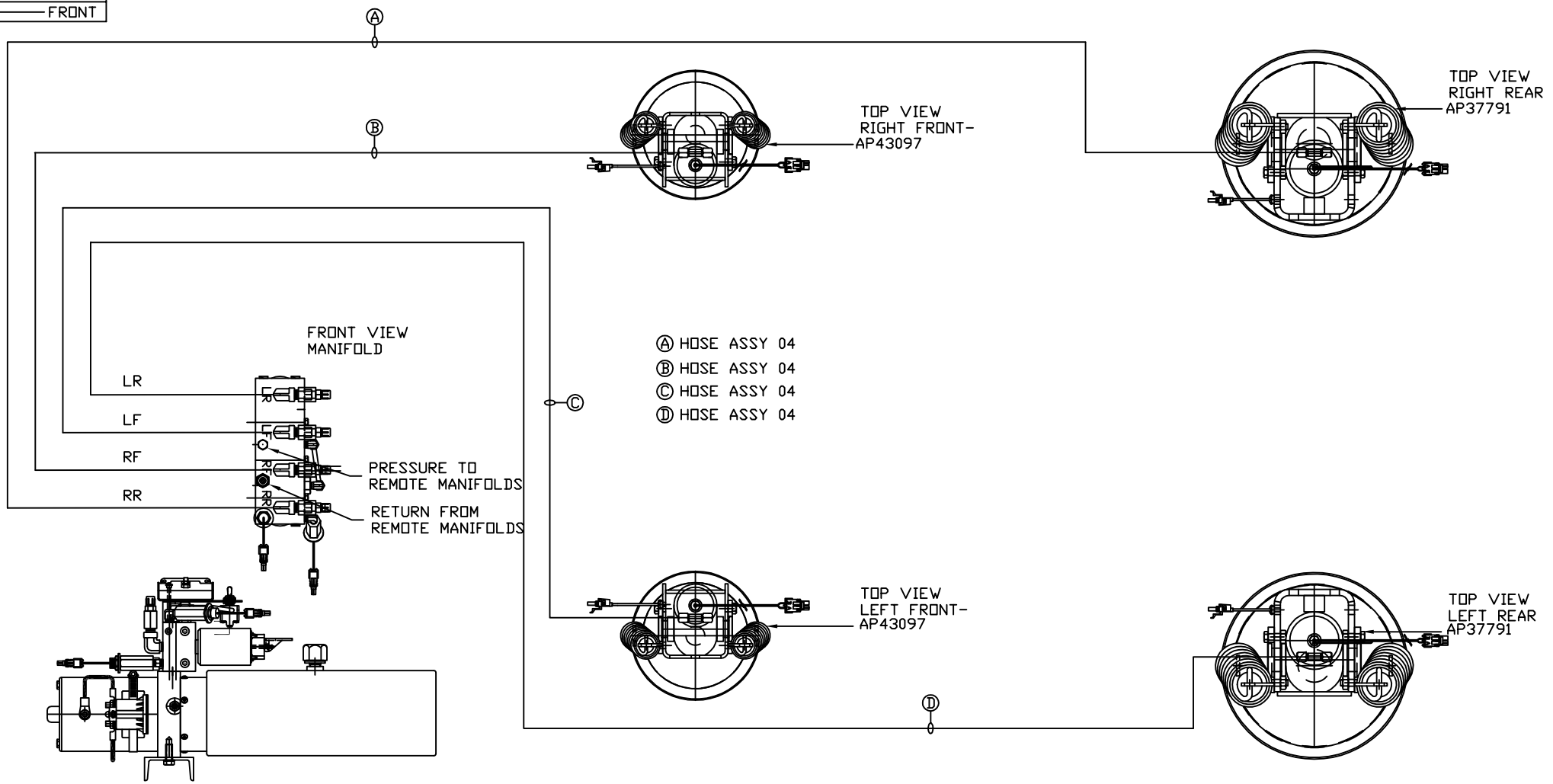


ORIENTATION  
← FRONT



- Ⓐ HOSE ASSY 04
- Ⓑ HOSE ASSY 04
- Ⓒ HOSE ASSY 04
- Ⓓ HOSE ASSY 04

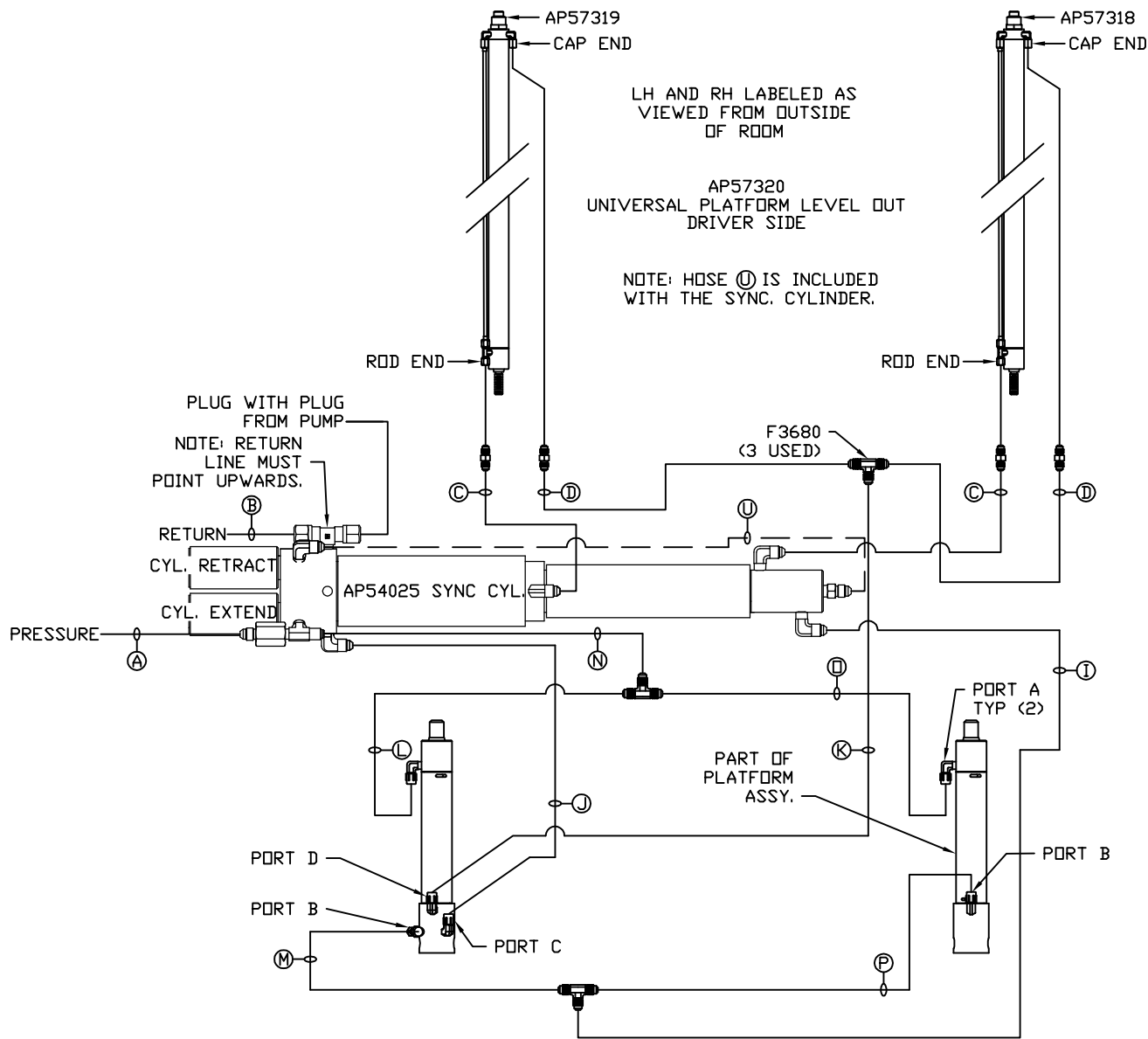
SIDE VIEW PUMP/MANIFOLD-AP58661-01

LOCATION AND ORIENTATION OF PUMP/MANIFOLD ASSEMBLY WILL DIFFER DEPENDING UPON O.E.M.

NOTE: INSTALLATION MUST CONFORM TO GOOD SHOP PRACTICES, SAE STANDARDS, RVIA STANDARDS, AND OTHER APPLICABLE STANDARDS.

PARTS LIST: PL62293

		HWH I-80 EXIT 267 SOUTH RT 1 MOSCOW, IOWA 52760	
		SCALE 1:6	DATE 21JAN21
		DRAWN BY .	
HYD CONN DIAGRAM			
NO.	DATE	REVISION	
THE INFORMATION DISCLOSED ON THIS DRAWING IS CONFIDENTIAL AND MUST NOT BE DISCLOSED OR USED IN ANY MANNER WHICH WILL BE DETRIMENTAL TO THE HWH CORPORATION			
		NEWMAR	DRAWING NUMBER MP71310 A/B



- (A) HOSE ASSY 04  
PRESSURE
- (B) .375" OD NYLON TUBING  
RETURN
- (C) HOSE ASSY 03  
ROD END - ALWAYS PRESSURIZED - MUST  
BE HIGH PRESSURE HOSES OF EQUAL  
LENGTH AND DIAMETER
- (D) HOSE ASSY 04  
CAP END - MUST MAINTAIN EQUAL LENGTH  
AND DIAMETER
- (E) HOSE ASSY 04  
CAP END (LIFT)
- (F) HOSE ASSY 03  
CAP END (ROOM)
- (G) HOSE ASSY 03  
CAP END (ROOM)
- (H) HOSE ASSY 03  
ROD END (LIFT) - ALWAYS PRESSURIZED
- (M) HOSE ASSY 03  
CAP END (LIFT)
- (N) HOSE ASSY 04  
ROD END - ALWAYS PRESSURIZED (LIFT)
- (O) HOSE ASSY 03  
ROD END (LIFT) - ALWAYS PRESSURIZED
- (P) HOSE ASSY 03  
CAP END LIFT
- (Q) STEEL TUBE  
CAP END (LIFT)

NOTE: INSTALLATION MUST CONFORM TO GOOD SHOP PRACTICES, SAE STANDARDS, RVIA STANDARDS, AND OTHER APPLICABLE STANDARDS.

MP71310 B/B  
21JAN21