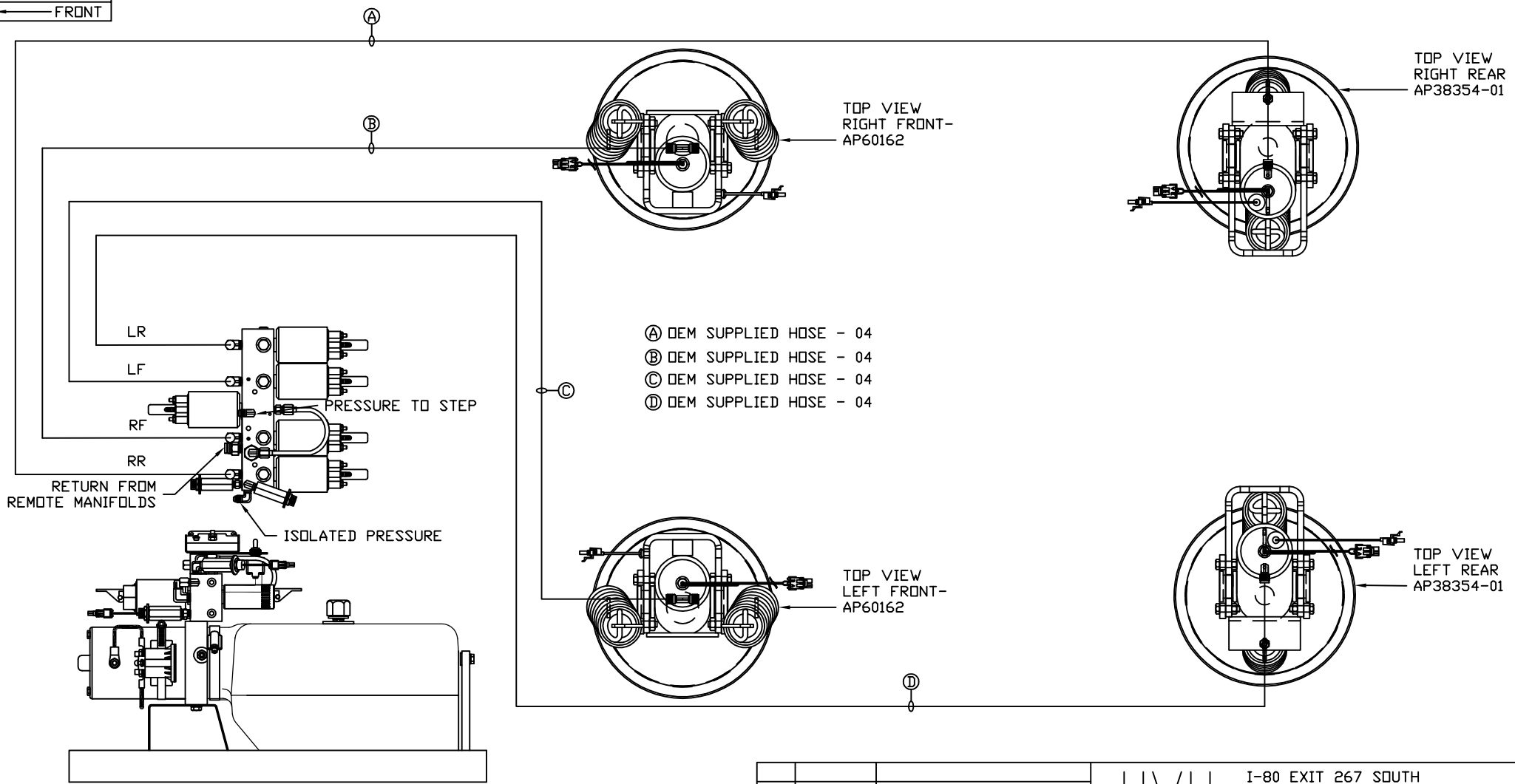


ORIENTATION  
← FRONT



SIDE VIEW PUMP/MANIFOLD-AP59850-01

LOCATION AND ORIENTATION OF PUMP/MANIFOLD ASSEMBLY WILL DIFFER DEPENDING UPON O.E.M.

NOTE: INSTALLATION MUST CONFORM TO GOOD SHOP PRACTICES, SAE STANDARDS, RVIA STANDARDS, AND OTHER APPLICABLE STANDARDS.

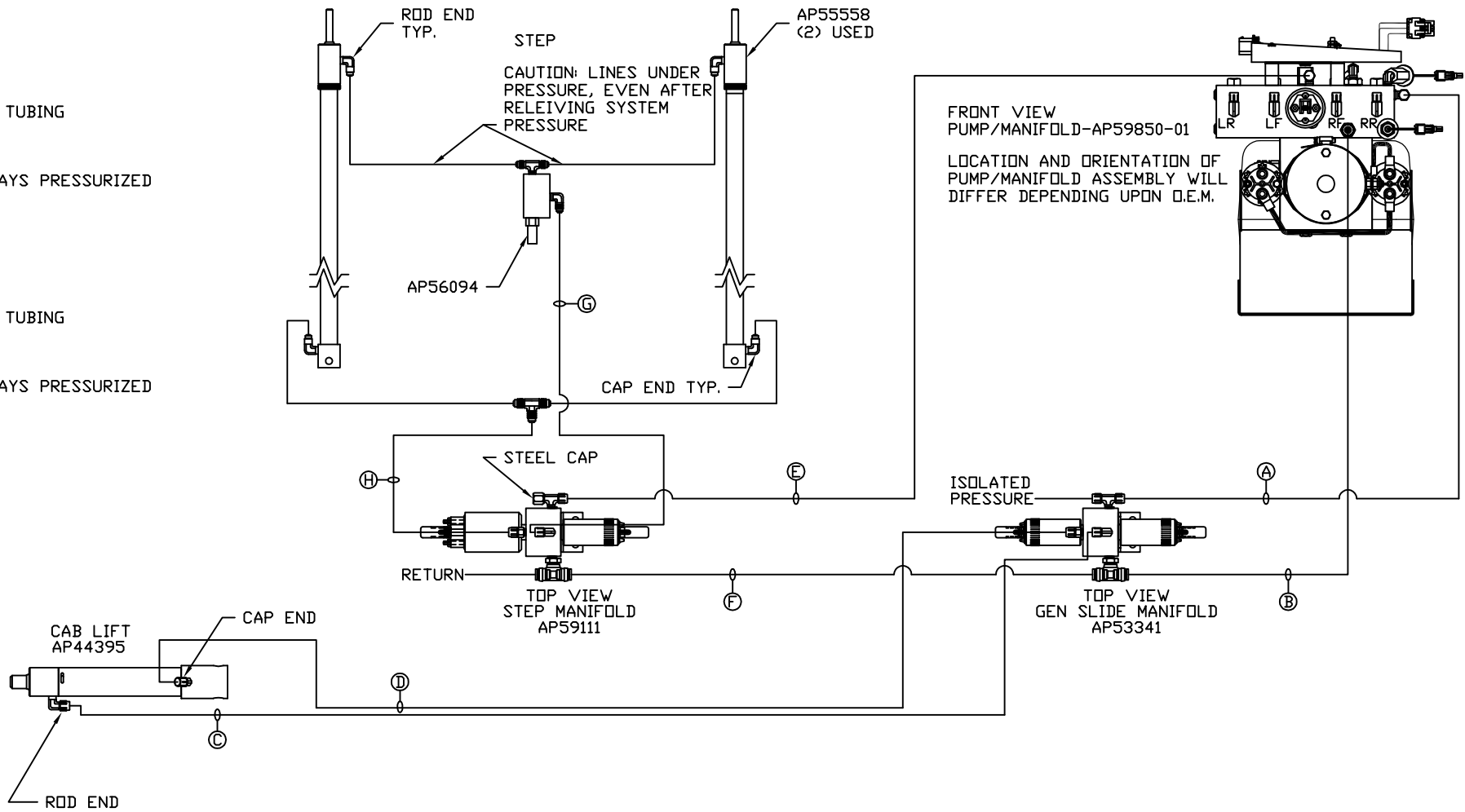
PARTS LIST: PL62331

		HWH		I-80 EXIT 267 SOUTH RT 1 MOSCOW, IOWA 52760	
		SCALE 1:6	DATE 28JAN21	DRAWN BY .	
		HYD CONN DIAGRAM			
NO.	DATE	REVISION			
		NEWMAR		DRAWING NUMBER MP71346 A/B	
<p>THE INFORMATION DISCLOSED ON THIS DRAWING IS CONFIDENTIAL AND MUST NOT BE DISCLOSED OR USED IN ANY MANNER WHICH WILL BE DETRIMENTAL TO THE HWH CORPORATION</p>					

ORIENTATION

← FRONT

- Ⓐ HOSE ASSY 04 PRESSURE
- Ⓑ .375" OD NYLON TUBING RETURN
- Ⓒ HOSE ASSY 04 ROD END - ALWAYS PRESSURIZED
- Ⓓ HOSE ASSY 04 CAP END
- Ⓔ HOSE ASSY 04 PRESSURE
- Ⓕ .375" OD NYLON TUBING RETURN
- Ⓖ HOSE ASSY 04 ROD END - ALWAYS PRESSURIZED
- Ⓗ HOSE ASSY 04 CAP END



NOTE: INSTALLATION MUST CONFORM TO GOOD SHOP PRACTICES, SAE STANDARDS, RVIA STANDARDS, AND OTHER APPLICABLE STANDARDS.

MP71346 B/B  
28JAN21