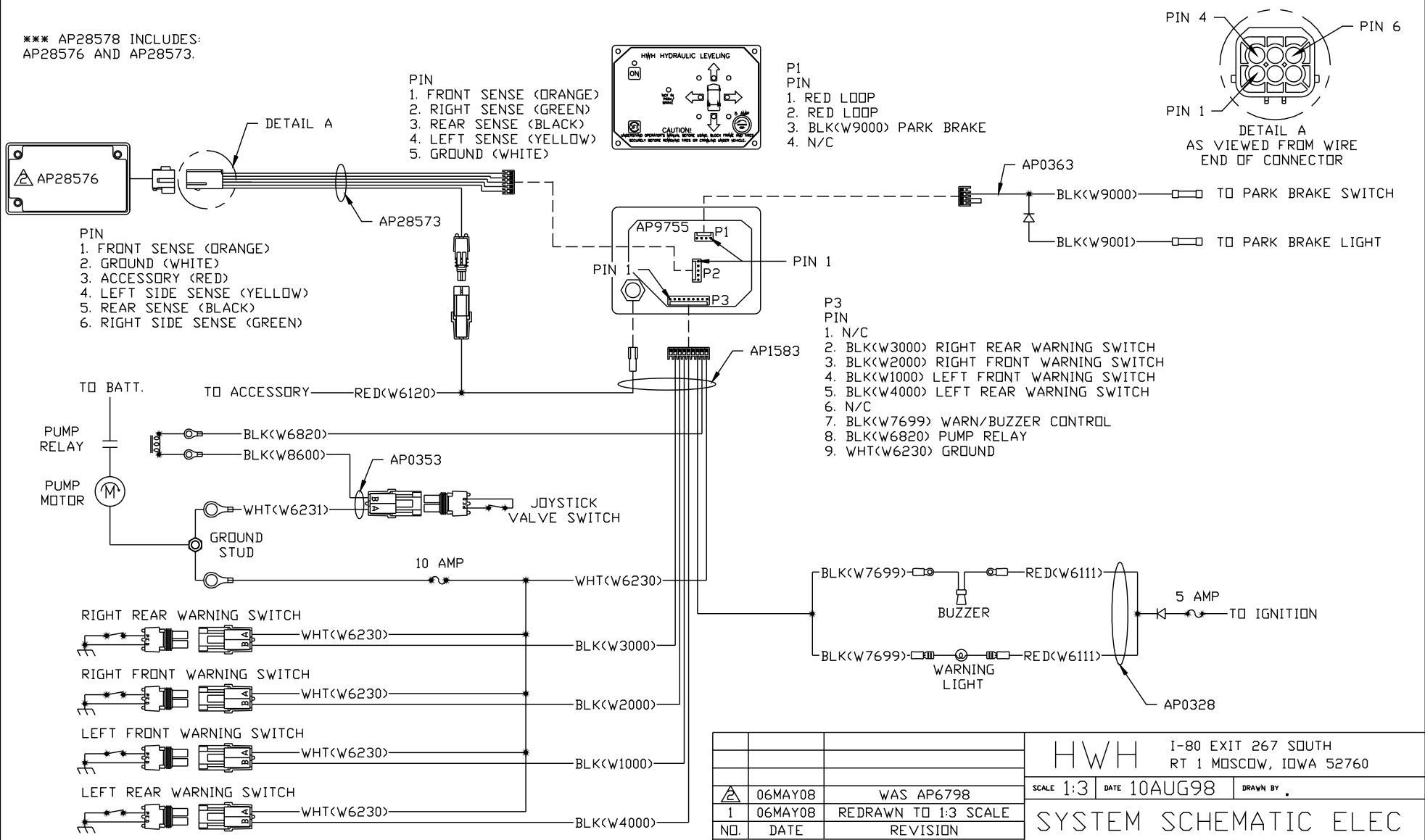


*** AP28578 INCLUDES:
AP28576 AND AP28573.



NOTE: INSTALLATION MUST CONFORM TO GOOD SHOP PRACTICES, SAE STANDARDS, RVIA STANDARDS, AND OTHER APPLICABLE STANDARDS.

		HWH I-80 EXIT 267 SOUTH RT 1 MOSCOW, IOWA 52760	
	06MAY08	WAS AP6798	SCALE 1:3
	06MAY08	REDRAWN TO 1:3 SCALE	DATE 10AUG98
NO.	DATE	REVISION	DRAWN BY .
SYSTEM SCHEMATIC ELEC			DRAWING NUMBER
THE INFORMATION DISCLOSED ON THIS DRAWING IS CONFIDENTIAL AND MUST NOT BE DISCLOSED OR USED IN ANY MANNER WHICH WILL BE DETRIMENTAL TO THE HWH CORPORATION			MP882870