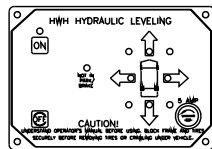
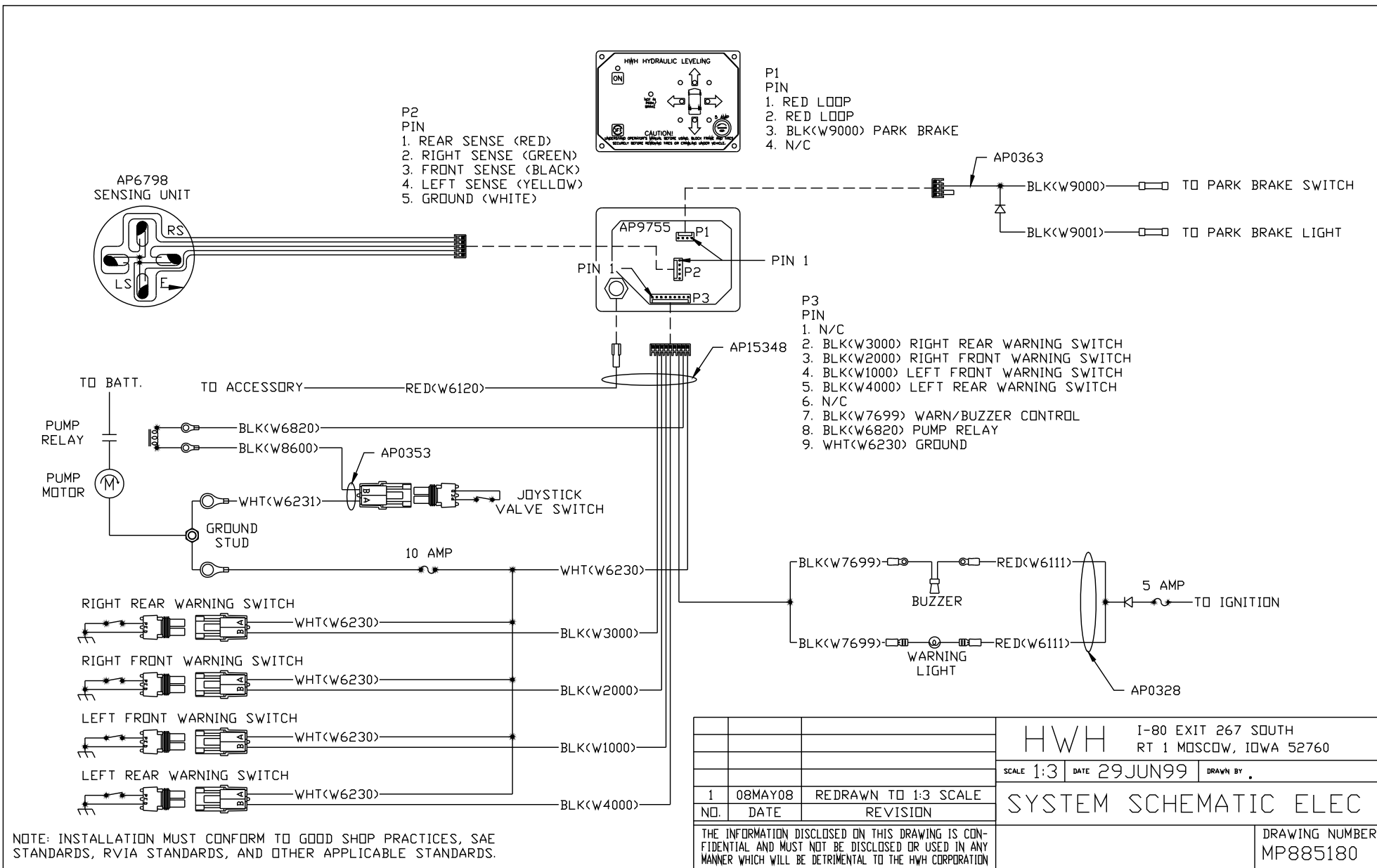


- P2
PIN
1. REAR SENSE (RED)
 2. RIGHT SENSE (GREEN)
 3. FRONT SENSE (BLACK)
 4. LEFT SENSE (YELLOW)
 5. GROUND (WHITE)



- P1
PIN
1. RED LOOP
 2. RED LOOP
 3. BLK(W9000) PARK BRAKE
 4. N/C

- P3
PIN
1. N/C
 2. BLK(W3000) RIGHT REAR WARNING SWITCH
 3. BLK(W2000) RIGHT FRONT WARNING SWITCH
 4. BLK(W1000) LEFT FRONT WARNING SWITCH
 5. BLK(W4000) LEFT REAR WARNING SWITCH
 6. N/C
 7. BLK(W7699) WARN/BUZZER CONTROL
 8. BLK(W6820) PUMP RELAY
 9. WHT(W6230) GROUND



NOTE: INSTALLATION MUST CONFORM TO GOOD SHOP PRACTICES, SAE STANDARDS, RVIA STANDARDS, AND OTHER APPLICABLE STANDARDS.

1	08MAY08	REDRAWN TO 1:3 SCALE
NO.	DATE	REVISION

			I-80 EXIT 267 SOUTH RT 1 MOSCOW, IOWA 52760		
SCALE 1:3	DATE 29JUN99	DRAWN BY .			
SYSTEM SCHEMATIC ELEC					

THE INFORMATION DISCLOSED ON THIS DRAWING IS CONFIDENTIAL AND MUST NOT BE DISCLOSED OR USED IN ANY MANNER WHICH WILL BE DETRIMENTAL TO THE HW H CORPORATION

DRAWING NUMBER
MP885180