

AP16225 CNI
PIN
1 BLK(W7695) SYSTEM WAKE UP
2 N/C
3 RED(W6800) SW_BATT
4 WHT(W6230) GND
5 CAN SHIELD
6 RED(W6110) IGNITION
7 GRN CAN LOW
8 YEL CAN HI

AP16225 CN10
PIN
1 BLK (W7599) RST LGT CNTRL
2 RED (W6100) RST LGT SUPPLY
3 BLK (W7550) RST BUTTON CNTRL
4 RED (W6121) WARN LIGHT SUPPLY
5 WHT (W6230) RESET BUTTON GND
6 BLK (W7699) WARN LIGHT CNTRL

AP16225 CN11
PIN
1 RED (W6110) IGNITION
2 N/C
3 N/C
4 N/C
5 RED (W6120) ACCESSORY
6 RED (W6101) HOUSE BATTERY
7 WHT (W6230) GROUND
8 BLK (W9961) NEUTRAL HOLD
9 BLK (W9955) NEUTRAL HOLD
10 N/C
11 BLK (W9000) PARK BRAKE SWITCH
12 RED (W6100) ENGINE BATTERY

AP16225 CN9
PIN
1 BLK (W8500) MASTER RELAY CNTRL
2 BLK (W8100) SYSTEM PSW.
3 BLK (W8101) 50 LBS. PSW.
4 BLK (W8600) PMP RELAY CNTRL
5 BLK (W9900) SPEED SWITCH
6 BLK (W9901) SW. BATT PUMP RELAY
7 N/C
8 N/C

CN99
PIN
1 RED
2 GRN
3 BLK
4 YLW
5 WHT
6 N/C
7 N/C
8 N/C

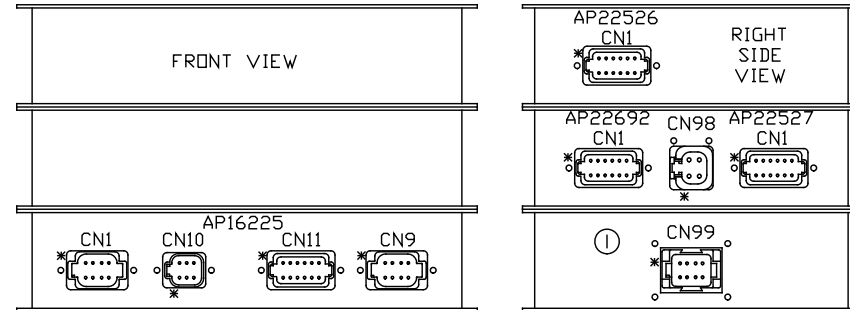
CN98
PIN
1 BLK (W6801) SW_BATT
2 BLK (W6801) SW_BATT
3 WHT (W6230) GND
4 WHT (W6230) GND

AP22692 CNI
PIN
1 N/C
2 N/C
3 N/C
4 N/C
5 BLK (W3400) RR JACK SOLENOID
6 BLK (W7601) CRX
7 BLK (W4400) LR JACK SOLENOID
8 N/C
9 N/C
10 N/C
11 N/C
12 N/C

AP22527 CNI
PIN
1 BLK (W5300) RM 3 UNLOCK
2 BLK (W5200) RM 3 LOCK
3 BLK (W5100) RM 3 RETRACT
4 BLK (W5000) RM 3 EXTEND
5 N/C
6 N/C
7 N/C
8 N/C
9 N/C
10 N/C
11 N/C
12 N/C

AP22526 CNI
PIN
1 BLK (W5000) RM 1 EXTEND
2 BLK (W5100) RM 1 RETRACT
3 BLK (W5200) RM 1 LOCK
4 BLK (W5300) RM 1 UNLOCK
5 BLK (W5400) RM 1 FLOOR UP
6 BLK (W5500) RM 1 FLOOR DWN
7 BLK (W5201) RM 2 LOCK
8 BLK (W5301) RM 2 UNLOCK
9 BLK (W5101) RM 2 RETRACT
10 BLK (W5001) RM 2 EXTEND
11 N/C
12 N/C

AP22690
CENTRAL CONTROL MODULE



* DESIGNATES PIN 1 OF CONNECTORS

AP NUMBERS REFER TO PRINTED CIRCUIT BOARDS.

			HWH I-80 EXIT 267 SOUTH RT 1 MOSCOW, IOWA 52760	
			SCALE 1:3	DATE 21OCT00
			DRAWN BY .	
1	21JUL05	UPDATED PART NUMBERS	SCHEMATICS SYS ELEC	
NO.	DATE	REVISION		
THE INFORMATION DISCLOSED ON THIS DRAWING IS CONFIDENTIAL AND MUST NOT BE DISCLOSED OR USED IN ANY MANNER WHICH WILL BE DETRIMENTAL TO THE HWH CORPORATION			AA22345	DRAWING NUMBER MP88636 A/K

CN98
PIN
1 BLK (W6801) SW BATT
2 BLK (W6801) SW BATT
3 WHT (W6231) GROUND
4 WHT (W6231) GROUND

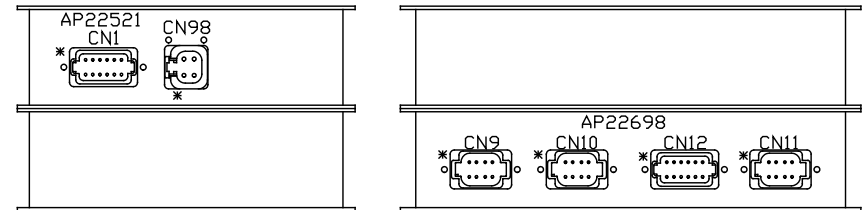
AP22698 CN9
PIN
1 BLK(W7695) SYS WAKE UP
2 N/C
3 RED(W6800) SW BATT
4 WHT(W6230) GROUND
5 CAN SHIELD
6 RED(W6110) IGNITION
7 GRN CAN LOW
8 YEL CAN HI

AP22521 CN1
PIN
1 N/C
2 BLK (W1500) LEFT FRONT RAISE
3 BLK (W1600) LEFT FRONT LOWER
4 BLK (W2500) RIGHT FRONT RAISE
5 BLK (W2600) RIGHT FRONT LOWER
6 BLK (W9700) COMPRESSOR
7 N/C
8 BLK (W1700) TRAVEL
9 N/C
10 N/C
11 WHT (W6254) GROUND
12 N/C

AP22698 CN11
PIN
1 N/C
2 N/C
3 BLK (W1210) LEFT FRONT PSW
4 WHT (W6255) GROUND
5 N/C
6 BLK (W2210) RIGHT FRONT PSW
7 N/C
8 N/C

AP22698 CN10
PIN
1 N/C
2 N/C
3 N/C
4 N/C
5 N/C
6 N/C
7 N/C
8 N/C

AP22700
FRONT AIR MODULE * DESIGNATES PIN 1 OF CONNECTORS



CN98
PIN
1 BLK (W6801) SW BATT
2 BLK (W6801) SW BATT
3 WHT (W6231) GROUND
4 WHT (W6231) GROUND

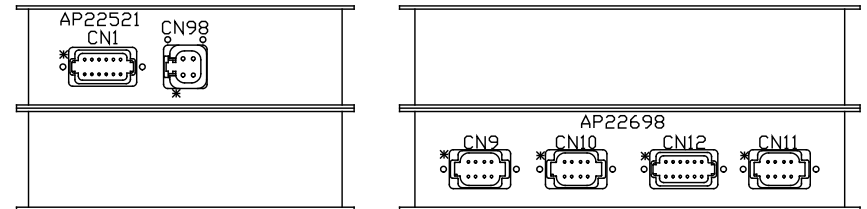
AP22698 CN9
PIN
1 BLK(W7695) SYS WAKE UP
2 N/C
3 RED(W6800) SW BATT
4 WHT(W6230) GROUND
5 CAN SHIELD
6 RED(W6110) IGNITION
7 GRN CAN LOW
8 YEL CAN HI

AP22521 CN1
PIN
1 N/C
2 BLK (W4500)
3 BLK (W4600)
4 BLK (W3500)
5 BLK (W3600)
6 N/C
7 N/C
8 BLK (W3700)
9 N/C
10 N/C
11 WHT (W6258)
12 N/C

AP22698 CN12
PIN
1 WHT (W6235)
2 N/C
3 N/C
4 N/C
5 BLK (W3200)
6 BLK (W3000)
7 BLK (W4000)
8 BLK (W4200)
9 N/C
10 N/C
11 N/C
12 N/C

AP22698 CN11
PIN
1 WHT (W6259)
2 N/C
3 N/C
4 N/C
5 N/C
6 N/C
7 BLK (W3215)
8 N/C

AP22740
REAR AIR MODULE



* DESIGNATES PIN 1 OF CONNECTORS

AP NUMBERS REFER TO PRINTED CIRCUIT BOARDS.

AP22694 CN9
PIN

1 BLK(W7630)
2 N/C
3 RED(W6800)
4 WHT(W6230)
5 CAN SHIELD
6 N/C
7 GRN
8 YEL

AP22694 CN10
PIN

1 N/C
2 BLK (W7510)
3 BLK (W7530)
4 BLK (W7501)
5 BLK (W7502)
6 RED (W6805)
7 BLK (W7631)
8 WHT (W6230)

AP22694 CN 11
PIN

1 BLK (W5700)
2 BLK (W5716)
3 BLK (W5702)
4 WHT (W6230)
5 RED (W6120)
6 BLK (W5703)
7 BLK (W7695)
8 BLK (W5701)

AP22694 CN12
PIN

1 WHT (W6230)
2 BLK (W5714)
3 BLK (W5707)
4 BLK (W5705)
5 BLK (W5711)
6 BLK (W5709)
7 BLK (W5708)
8 BLK (W5710)
9 BLK (W5704)
10 BLK (W5706)
11 BLK (W5713)
12 RED (W6120)

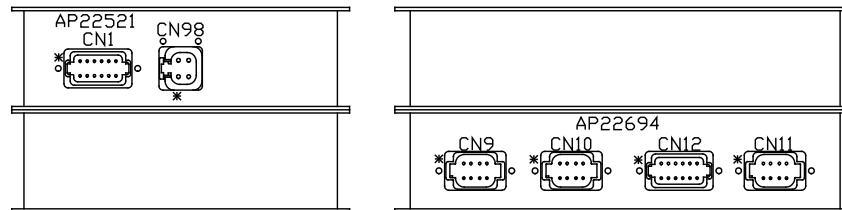
CN98
PIN

1 BLK (W6801)
2 BLK (W6801)
3 WHT (W6231)
4 WHT (W6231)

AP22521 CN1
PIN

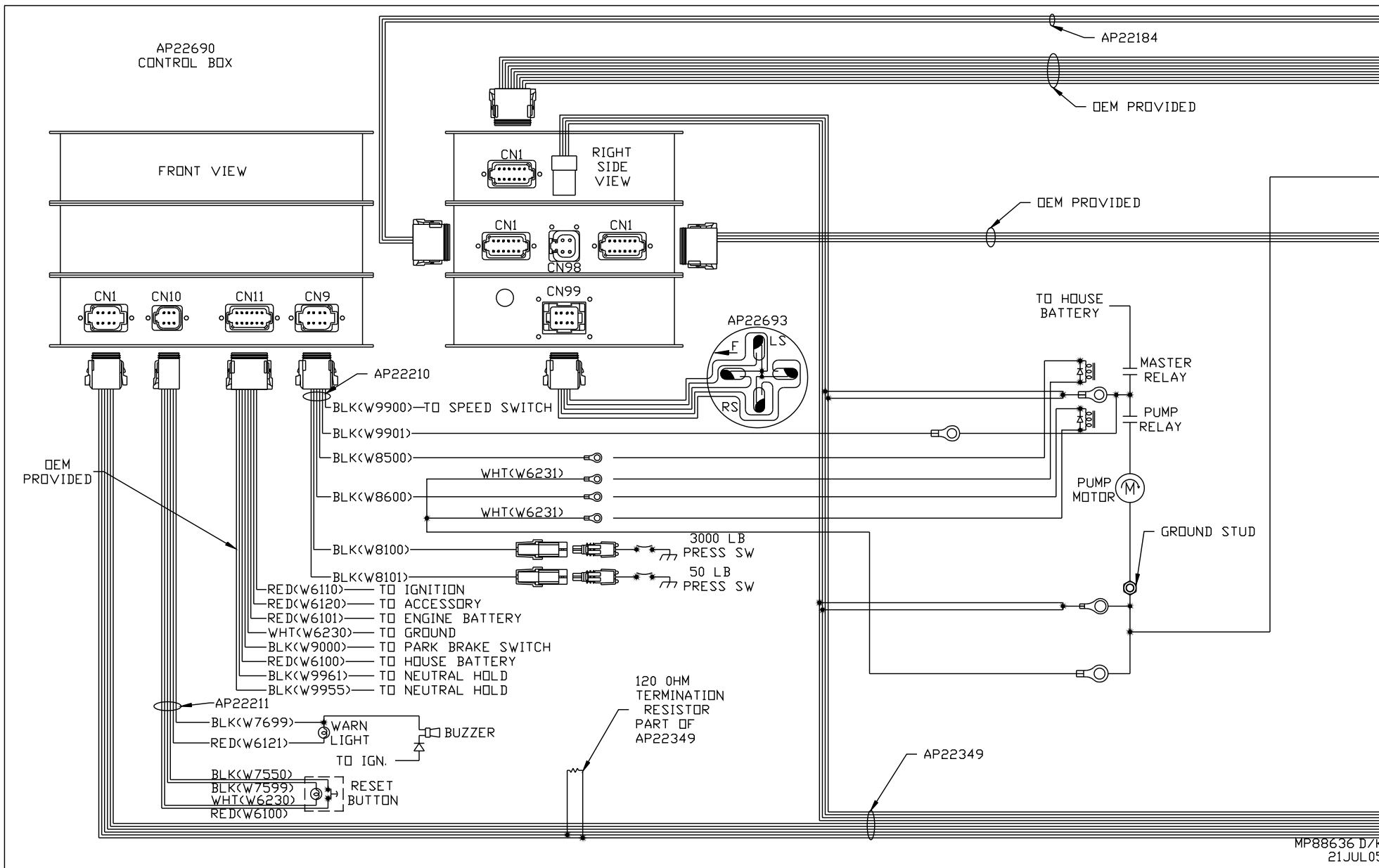
1 N/C
2 BLK (W5600)
3 N/C
4 N/C
5 N/C
6 N/C
7 N/C
8 N/C
9 N/C
10 N/C
11 WHT (W6245)
12 N/C

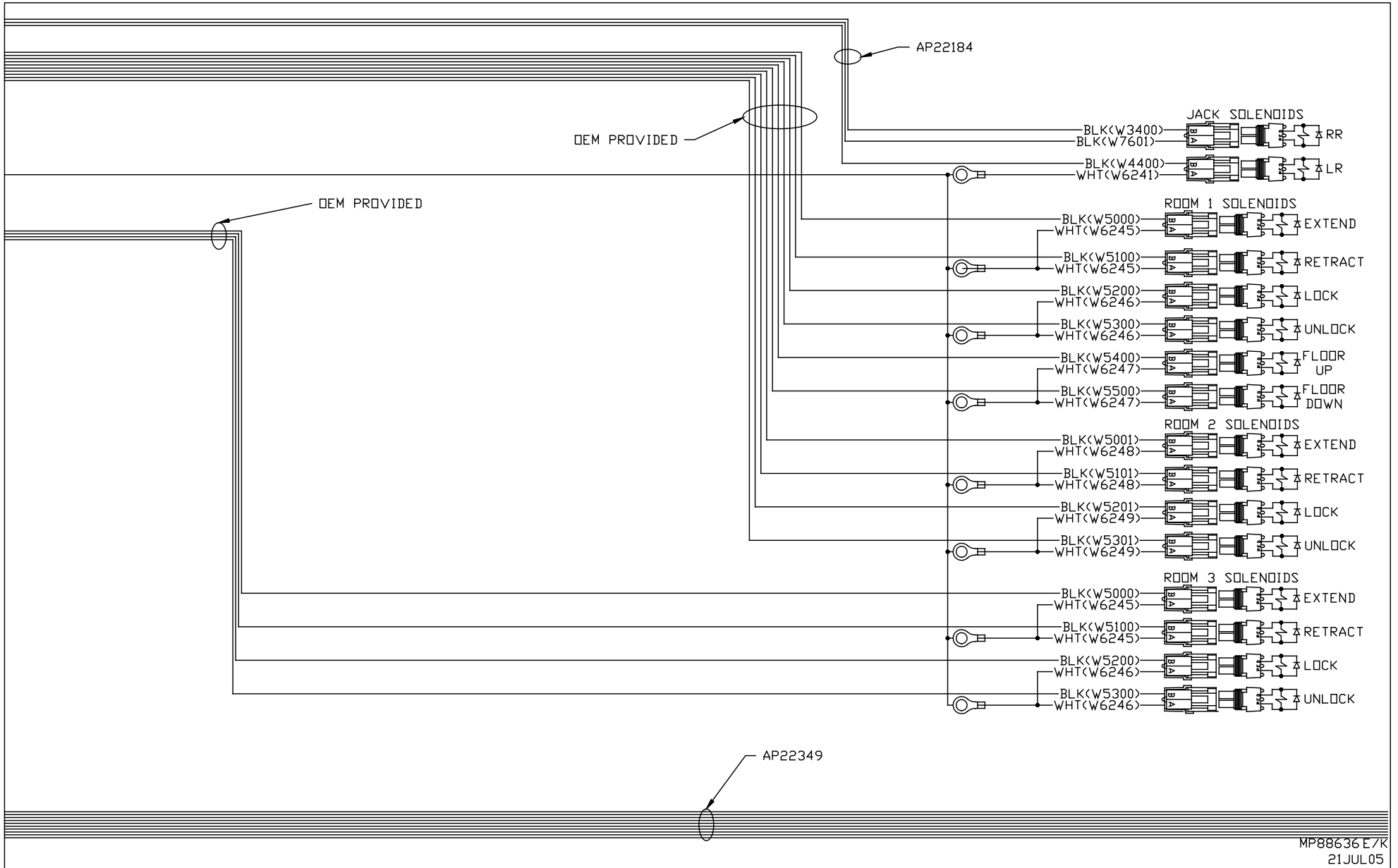
AP22691 (ROOM 1)
AP22738 (ROOM 2)
AP22739 (ROOM 3)

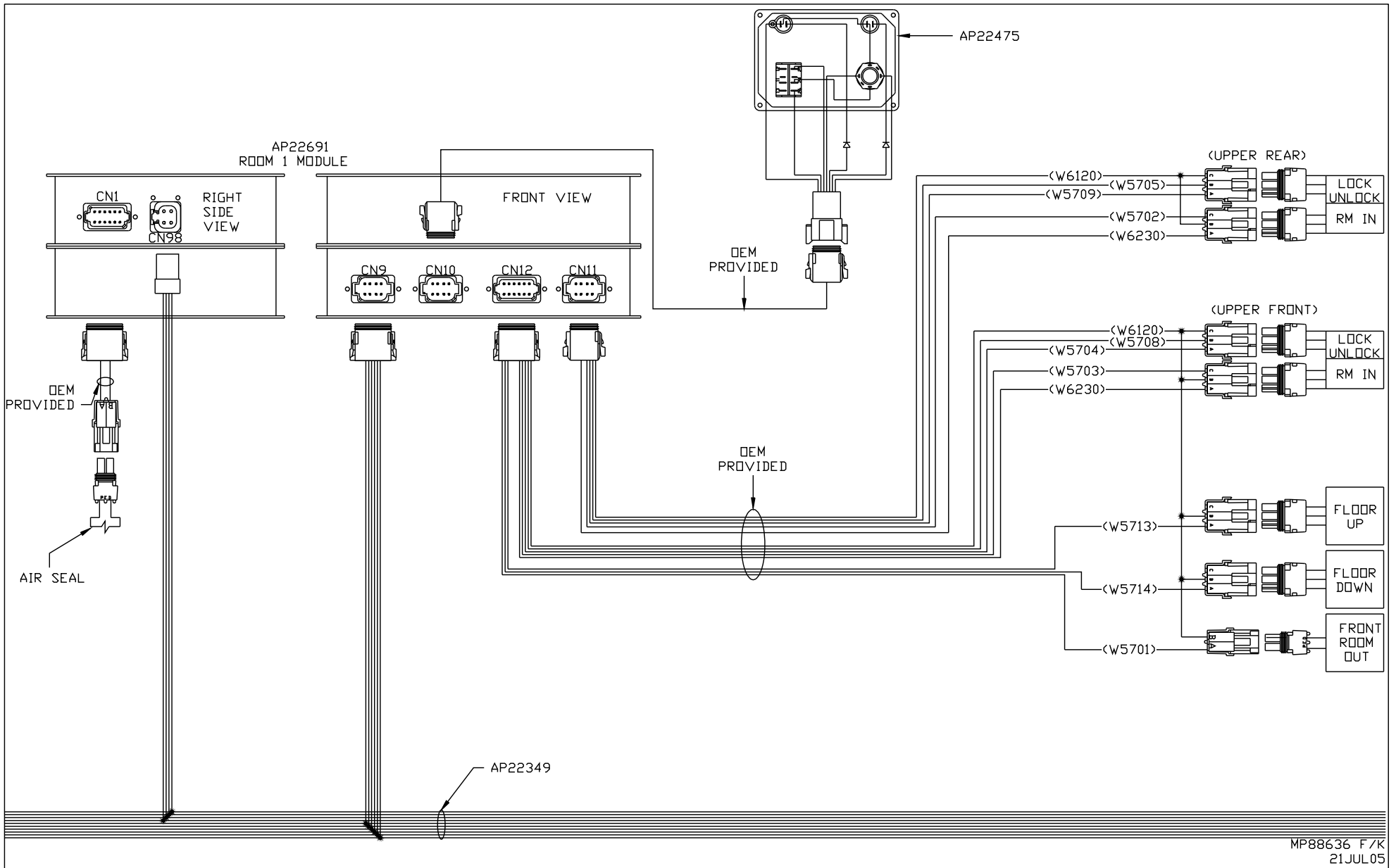


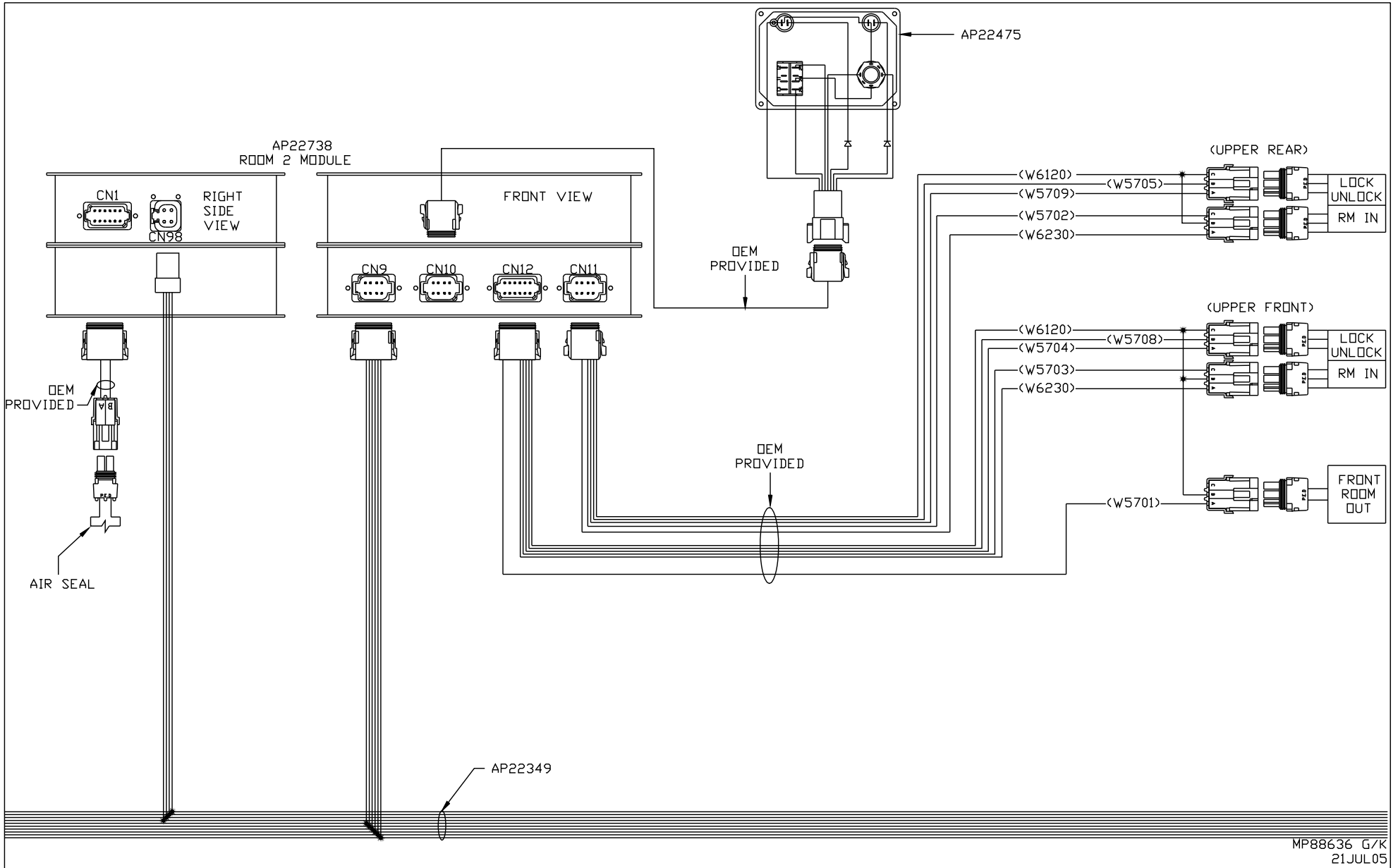
* DESIGNATES PIN 1 OF CONNECTORS

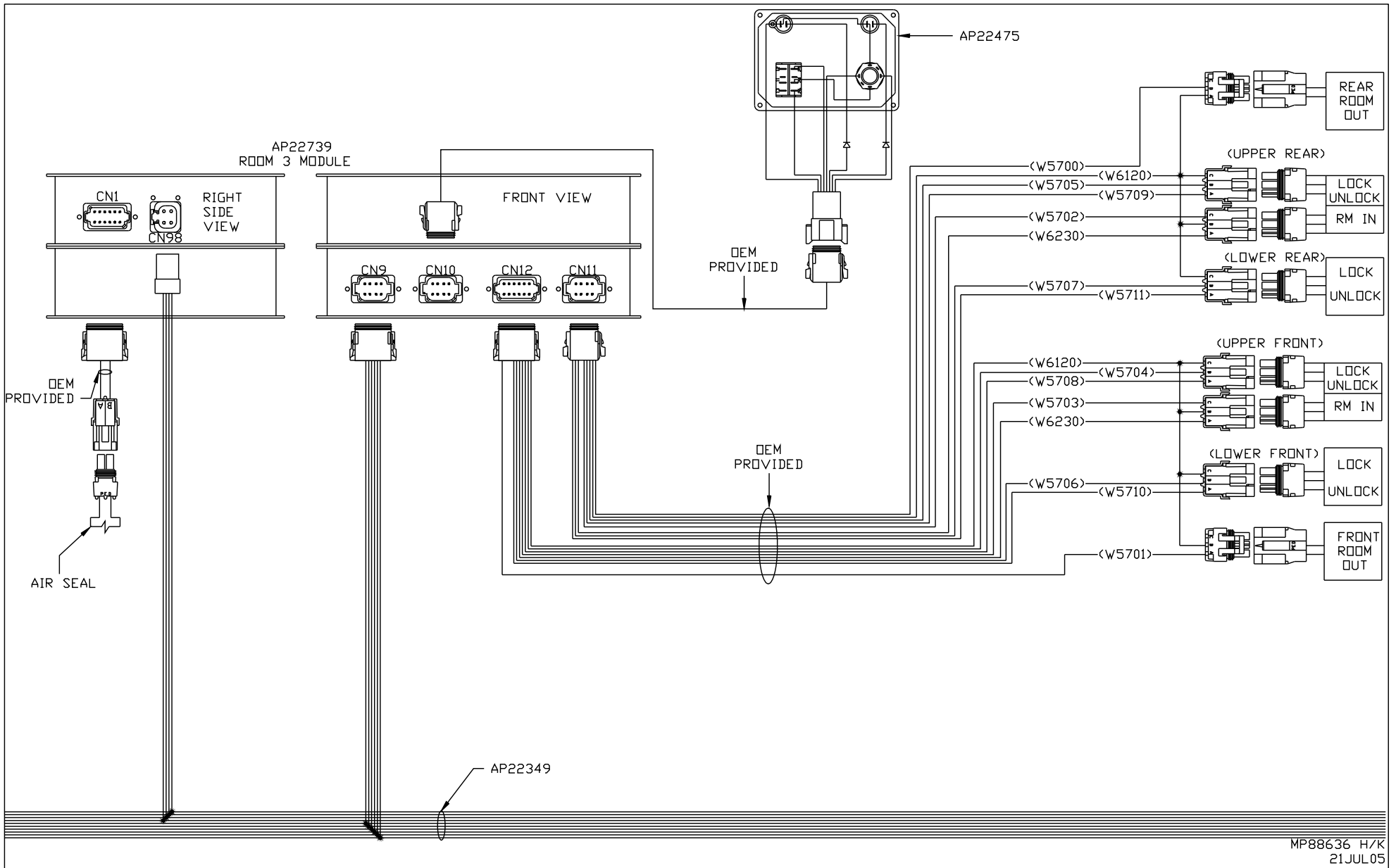
AP NUMBERS REFER TO PRINTED CIRCUIT BOARDS.

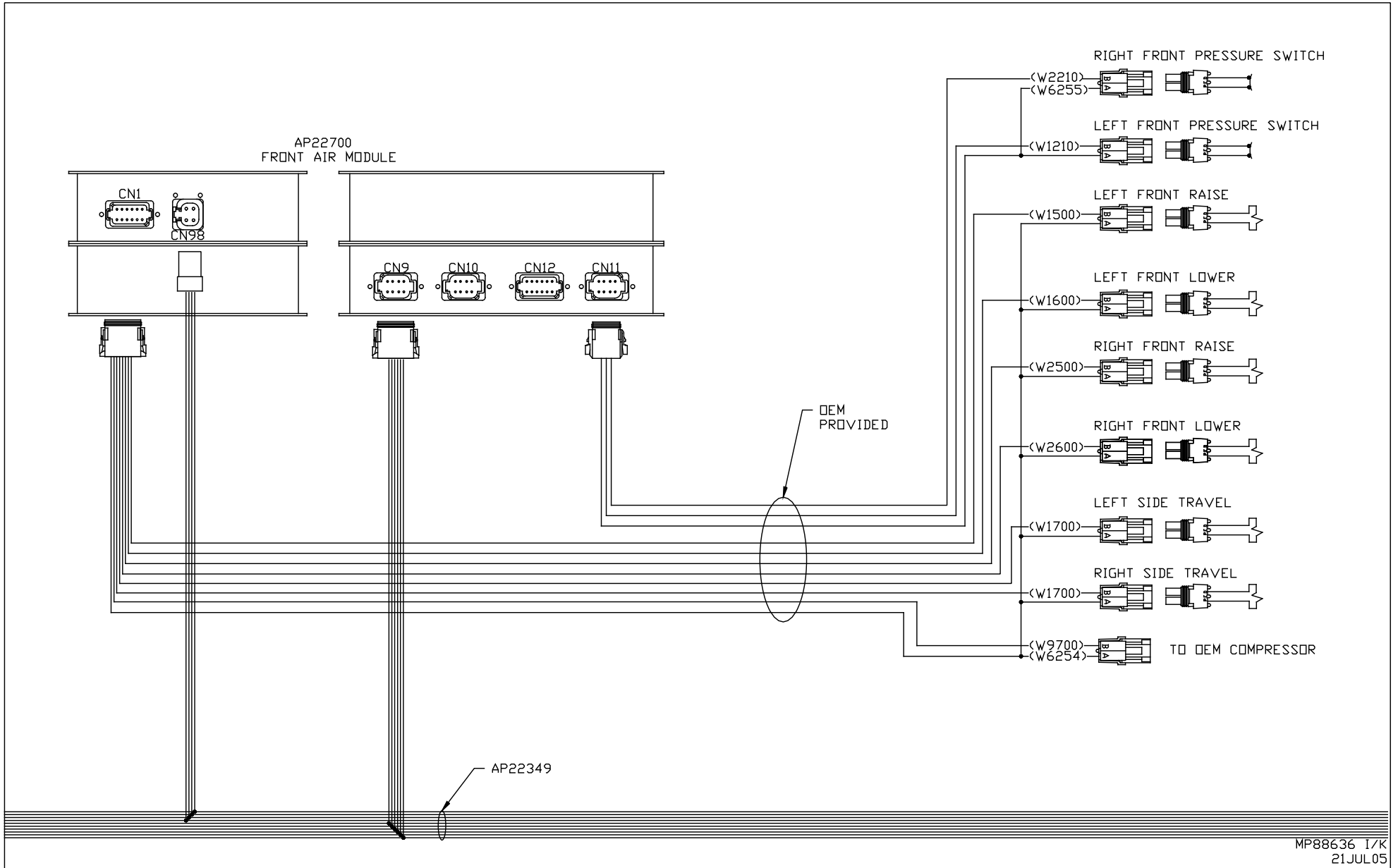


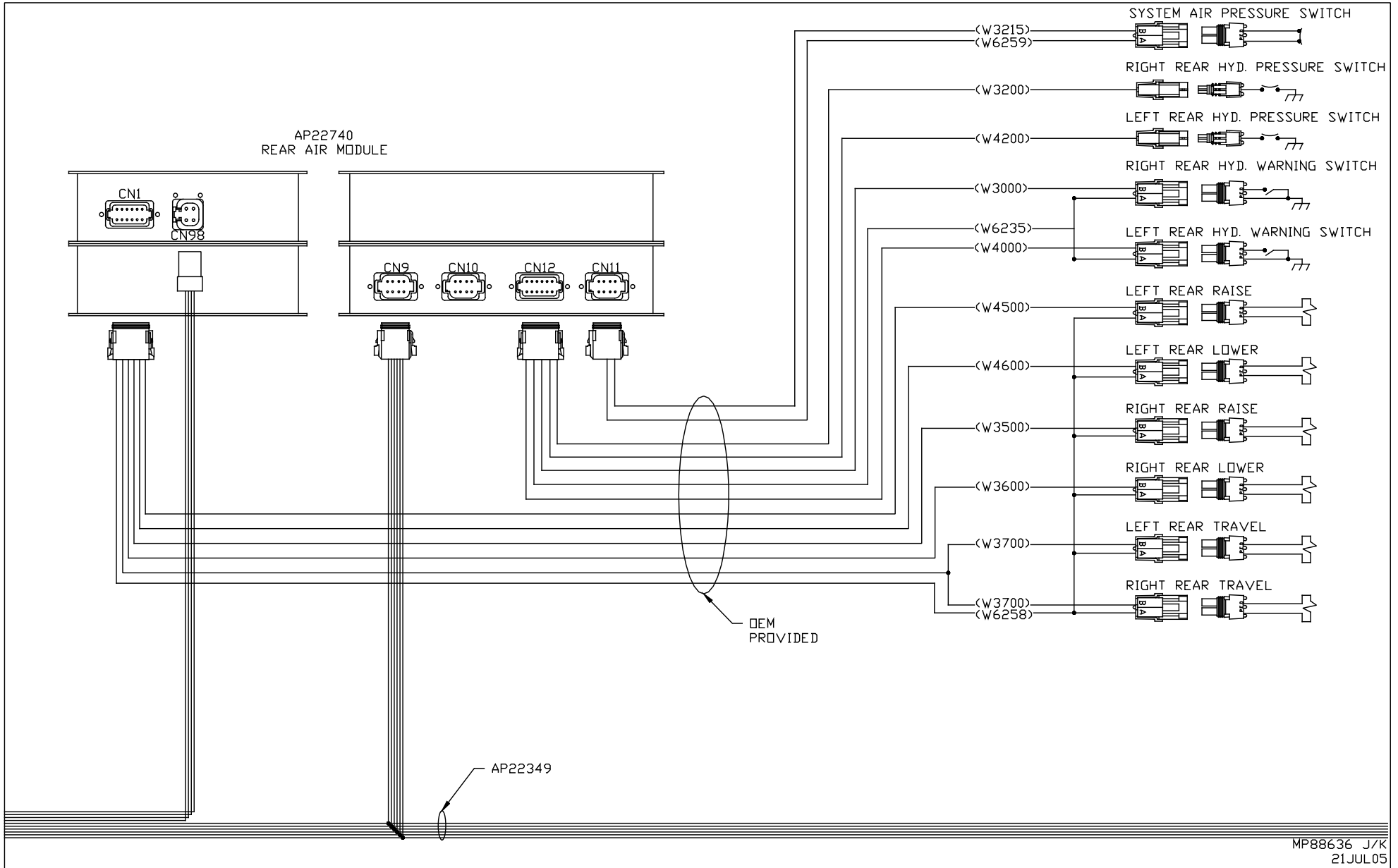


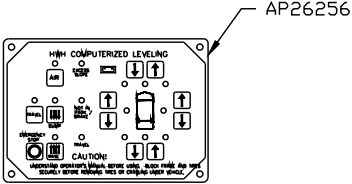












NOTE: 120 OHM TERMINATING RESISTOR.
 MEASURE RESISTANCE VALUE ACROSS PINS
 7 AND 8 OF THE BLACK 8 PIN CAN
 CONNECTOR. RESISTANCE WILL READ THE
 TWO TERMINATING RESISTORS IN
 PARALLEL.

120 OHM
 TERMINATION
 RESISTOR
 PART OF
 AP22349

- PIN
- 1 YELLOW
 - 2 GREEN
 - 3 CAN SHIELD
 - 4 WHITE (W6230)
 - 5 RED (W6800)

AP22349