

AP25805 CN1  
PIN

- 1 BLK (W5050) GEN SLIDE CYL. EXTEND
- 2 BLK (W5150) GEN SLIDE CYL. RETRACT
- 3 BLK (W5200) GEN SLIDE LOCK
- 4 BLK (W5300) GEN SLIDE UNLOCK
- 5 N/C
- 6 N/C
- 7 N/C
- 8 N/C
- 9 N/C
- 10 N/C
- 11 N/C
- 12 N/C

AP25804 CN1  
PIN

- 1 BLK (W5050) RM 1 CYL. EXTEND
- 2 BLK (W5150) RM 1 CYL. RETRACT
- 3 BLK (W5200) RM 1 LOCK
- 4 BLK (W5300) RM 1 UNLOCK
- 5 BLK (W5400) FLOOR UP
- 6 BLK (W5500) FLOOR DOWN
- 7 BLK (W5201) RM 2 LOCK
- 8 BLK (W5301) RM 2 UNLOCK
- 9 BLK (W5151) RM 2 CYL. RETRACT
- 10 BLK (W5051) RM 2 CYL. EXTEND
- 11 N/C
- 12 N/C

AP25804 CN98  
PIN

- 1 BLK (W6800) SW BATT
- 2 BLK (W6800) SW BATT
- 3 WHT (W6230) GROUND
- 4 WHT (W6230) GROUND

AP25804 CN2  
PIN

- 1 BLK (W5050) RM 3 CYL. EXTEND
- 2 BLK (W5150) RM 3 CYL. RETRACT
- 3 BLK (W5200) RM 3 LOCK
- 4 BLK (W5300) RM 3 UNLOCK
- 5 BLK (W5400) RM 3 FLOOR UP (NOT USED)
- 6 BLK (W5500) RM 3 FLOOR DOWN (NOT USED)
- 7 BLK (W5201) RM 4 LOCK
- 8 BLK (W5301) RM 4 UNLOCK
- 9 BLK (W5151) RM 4 CYL. RETRACT
- 10 BLK (W5051) RM 4 CYL. EXTEND
- 11 N/C
- 12 N/C

AP25801 CN1  
PIN

- 1 BLK (W7696) SYSTEM WAKE UP
- 2 N/C
- 3 RED (W6800) SW BATT
- 4 WHT (W6230) GROUND
- 5 CAN SHIELD
- 6 RED (W6110) IGNITION
- 7 GRN CAN LOW
- 8 YEL CAN HI

AP25801 CN10  
PIN

- 1 BLK (W7599) SWITCH LIGHT CONTROL
- 2 RED (W6100) RESET OUT
- 3 BLK (W7550) RESET IN
- 4 RED (W6121) WARN LIGHT SUPPLY
- 5 WHT (W6230) SWITCH LIGHT SUPPLY
- 6 BLK (W7699) WARN LIGHT/BUZZER CONTROL

AP25801 CN11  
PIN

- 1 RED (W6110) IGNITION
- 2 N/C
- 3 N/C
- 4 N/C
- 5 RED (W6120) ACCESSORY
- 6 RED (W6100) HOUSE BATTERY
- 7 WHT (W6230) GROUND
- 8 BLK (W9961) NEUTRAL HOLD
- 9 BLK (W9965) NEUTRAL HOLD
- 10 N/C
- 11 BLK (W9000) PARK BRAKE SWITCH
- 12 RED (W6101) ENGINE BATTERY

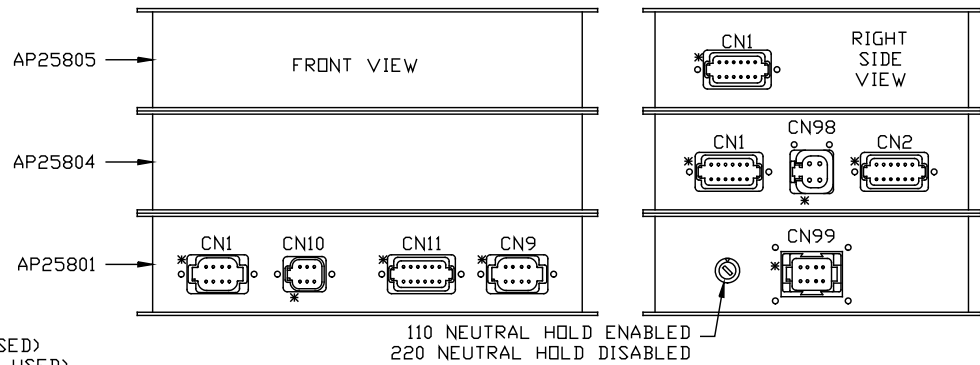
AP25801 CN9  
PIN

- 1 BLK (W8500) MASTER RELAY CONTROL
- 2 BLK (W8100) SYSTEM PSW
- 3 N/C
- 4 BLK (W8600) PMP RELAY CONTROL
- 5 BLK (W9900) SPEED SWITCH
- 6 BLK (W9901) PUMP MONITOR
- 7 N/C
- 8 N/C

AP25801 CN99  
PIN

- 1 RED (AP22693)
- 2 GRN (AP22693)
- 3 BLK (AP22693)
- 4 YLW (AP22693)
- 5 WHT (AP22693)
- 6 N/C
- 7 N/C
- 8 N/C

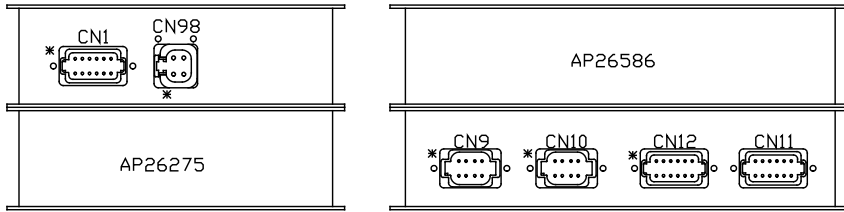
AP24859  
CENTRAL CONTROL MODULE



\* DESIGNATES PIN 1 OF CONNECTORS

			HWH I-80 EXIT 267 SOUTH RT 1 MOSCOW, IOWA 52760		
2	14SEP06	CORRECTED LED DESC	SCALE 1:3	DATE 02MAR05	DRAWN BY .
1	04AUG06	ADDED RING #'S, REDRAWN	SYSTEM SCHEMATIC ELEC		
NO.	DATE	REVISION			
THE INFORMATION DISCLOSED ON THIS DRAWING IS CONFIDENTIAL AND MUST NOT BE DISCLOSED OR USED IN ANY MANNER WHICH WILL BE DETRIMENTAL TO THE HWH CORPORATION			DRAWING NUMBER MP88693 A/Y		

AP23320  
FRONT AIR MODULE



\* DESIGNATES PIN 1 OF CONNECTORS

AP26586 CN1 (BROWN)  
PIN

- 1 N/C
- 2 BLK(W1500) LEFT FRONT RAISE
- 3 BLK(W1600) LEFT FRONT LOWER
- 4 BLK(W2500) RIGHT FRONT RAISE
- 5 BLK(W2600) RIGHT FRONT LOWER
- 6 BLK(W9700) COMPRESSOR
- 7 N/C
- 8 BLK(W1700) FRONT TRAVEL
- 9 N/C
- 10 N/C
- 11 WHT(W6254) GROUND
- 12 N/C

AP26586 CN98 (GRAY)  
PIN

- 1 BLK (W6800) SW BATT
- 2 BLK (W6800) SW BATT
- 3 WHT (W6230) GROUND
- 4 WHT (W6230) GROUND

AP26275 CN9 (BLACK)  
PIN

- 1 BLK(W7696) SYSTEM WAKE UP
- 2 N/C
- 3 RED(W6800) SW BATT
- 4 WHT(W6230) GROUND
- 5 CAN SHIELD
- 6 RED(W6110) IGNITION
- 7 GRN CAN LOW
- 8 YEL CAN HI

AP26275 CN10 (GRAY)  
PIN

- 1 N/C
- 2 N/C
- 3 N/C
- 4 GEN SLIDE EXTEND (OEM)
- 5 GEN SLIDE RETRACT (OEM)
- 6 SW BATTERY (OEM)
- 7 SYSTEM WAKE UP (OEM)
- 8 GROUND (OEM)

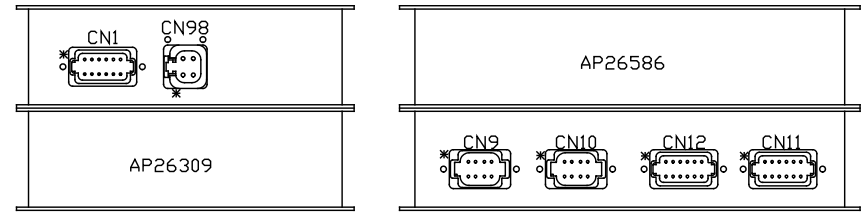
AP26275 CN12 (GRAY)  
PIN

- 1 GEN UNLOCK (OEM)
- 2 GEN IN (OEM)
- 3 GEN LOCK (OEM)
- 4 N/C
- 5 N/C
- 6 WHT(W6235) GROUND
- 7 N/C
- 8 N/C
- 9 N/C
- 10 BLK(W2210) RIGHT FRONT AIR PSW
- 11 N/C
- 12 N/C

AP26275 CN11 (GREEN)  
PIN

- 1 N/C
- 2 N/C
- 3 N/C
- 4 N/C
- 5 N/C
- 6 WHT(W6236) GROUND
- 7 N/C
- 8 N/C
- 9 N/C
- 10 BLK(W1210) LEFT FRONT AIR PSW
- 11 N/C
- 12 N/C

AP23321  
REAR AIR MODULE



\* DESIGNATES PIN 1 OF CONNECTORS

AP26586 CN1 (BROWN)  
PIN

- 1 N/C
- 2 BLK(W4500) LEFT REAR RAISE
- 3 BLK(W4600) LEFT REAR LOWER
- 4 BLK(W3500) RIGHT REAR RAISE
- 5 BLK(W3600) RIGHT REAR LOWER
- 6 N/C
- 7 N/C
- 8 BLK (W3700) REAR TRAVEL
- 9 N/C
- 10 N/C
- 11 WHT(W6258) GROUND
- 12 N/C

AP26586 CN98 (GRAY)  
PIN

- 1 BLK(W6800) SW BATT
- 2 BLK(W6800) SW BATT
- 3 WHT(W6230) GROUND
- 4 WHT(W6230) GROUND

AP26309 CN9 (BLACK)  
PIN

- 1 BLK(W7696) SYSTEM WAKE UP
- 2 N/C
- 3 RED(W6800) SW BATT
- 4 WHT(W6230) GROUND
- 5 CAN SHIELD
- 6 RED(W6110) IGNITION
- 7 GRN CAN LOW
- 8 YEL CAN HI

AP26309 CN10 (GRAY)  
PIN

- 1 N/C
- 2 N/C
- 3 N/C
- 4 N/C
- 5 N/C
- 6 N/C
- 7 N/C
- 8 N/C

AP26309 CN12 (GRAY)  
PIN

- 1 N/C
- 2 N/C
- 3 BLK(W3215) AIR SYSTEM PSW
- 4 N/C
- 5 N/C
- 6 WHT(W6235) GROUND
- 7 N/C
- 8 N/C
- 9 N/C
- 10 N/C
- 11 N/C
- 12 N/C

AP26309 CN11 (GREEN)  
PIN

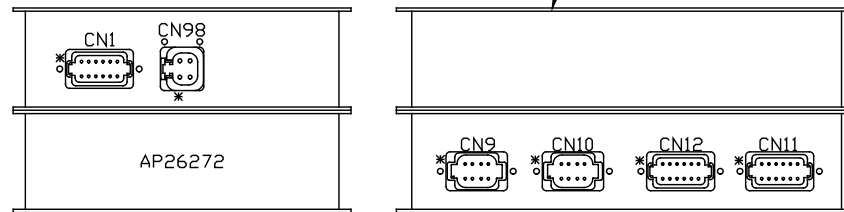
- 1 N/C
- 2 N/C
- 3 N/C
- 4 N/C
- 5 N/C
- 6 N/C
- 7 N/C
- 8 N/C
- 9 N/C
- 10 N/C
- 11 N/C
- 12 N/C

CN1 (BROWN)  
 PIN  
 1 N/C  
 2 AIR SEAL (OEM)  
 3 N/C  
 4 N/C  
 5 N/C  
 6 N/C  
 7 N/C  
 8 N/C  
 9 N/C  
 10 N/C  
 11 GROUND (OEM)  
 12 N/C

CN98 (GRAY)  
 PIN  
 1 BLK(W6800) SW BATT  
 2 BLK(W6800) SW BATT  
 3 WHT(W6230) GROUND  
 4 WHT(W6230) GROUND

AP23316  
 ROOM 1 MODULE

NOTE: THIS RING IS NOT  
 PRESENT ON SOME BOXES.



\* DESIGNATES PIN 1 OF CONNECTORS

AP26272 CN9 (BLACK)  
 PIN  
 1 BLK(W7696) SYSTEM WAKE UP  
 2 N/C  
 3 RED(W6800) SW BATT  
 4 WHT(W6230) GROUND  
 5 CAN SHIELD  
 6 RED(W6110) IGNITION  
 7 GRN CAN LOW  
 8 YEL CAN HI

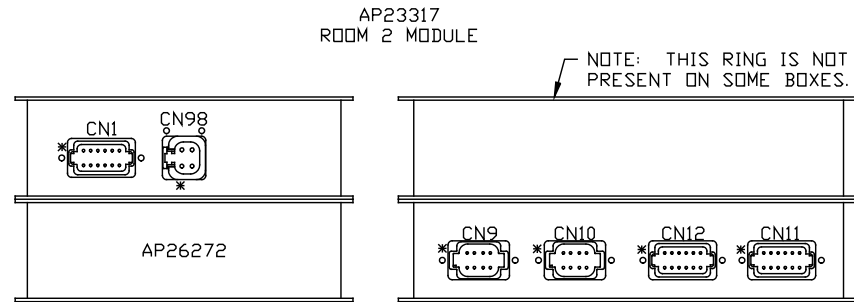
AP26272 CN10 (GRAY)  
 PIN  
 1 N/C  
 2 BLK(W7510) READY TO OPERATE  
 3 BLK(W7530) PUMP  
 4 BLK(W7501) EXTEND (ROOM 1)  
 5 BLK(W7502) RETRACT (ROOM 1)  
 6 RED(W6805) SW BATTERY  
 7 BLK(W7696) SYSTEM WAKE UP  
 8 WHT(W6230) GROUND

AP26272 CN12 (GRAY)  
 PIN  
 1 LOWER FRONT UNLOCK (OEM)  
 2 FRONT ROOM OUT (OEM)  
 3 LOWER FRONT ROOM IN (OEM)  
 4 LOWER FRONT LOCKED (OEM)  
 5 FLOOR DOWN (OEM)  
 6 GROUND (OEM)  
 7 SWITCHED BATTERY (OEM)  
 8 FLOOR UP (OEM)  
 9 UPPER FRONT LOCKED (OEM)  
 10 UPPER FRONT ROOM IN (OEM)  
 11 N/C  
 12 UPPER FRONT UNLOCK (OEM)

AP26272 CN 11 (GREEN)  
 PIN  
 1 LOWER REAR UNLOCK (OEM)  
 2 REAR ROOM OUT (OEM)  
 3 LOWER REAR ROOM IN (OEM)  
 4 LOWER REAR LOCK (OEM)  
 5 N/C  
 6 GROUND (OEM)  
 7 SWITCHED BATTERY (OEM)  
 8 N/C  
 9 UPPER REAR LOCK (OEM)  
 10 UPPER REAR ROOM IN (OEM)  
 11 N/C  
 12 UPPER REAR UNLOCK (OEM)

CN1 (BROWN)  
PIN  
1 N/C  
2 AIR SEAL (OEM)  
3 N/C  
4 N/C  
5 N/C  
6 N/C  
7 N/C  
8 N/C  
9 N/C  
10 N/C  
11 GROUND (OEM)  
12 N/C

CN98 (GRAY)  
PIN  
1 BLK(W6800) SW BATT  
2 BLK(W6800) SW BATT  
3 WHT(W6230) GROUND  
4 WHT(W6230) GROUND



\* DESIGNATES PIN 1 OF CONNECTORS

AP26272 CN9 (BLACK)  
PIN  
1 BLK(W7696) SYSTEM WAKE UP  
2 N/C  
3 RED(W6800) SW BATT  
4 WHT(W6230) GROUND  
5 CAN SHIELD  
6 RED(W6110) IGNITION  
7 GRN CAN LOW  
8 YEL CAN HI

AP26272 CN10 (GRAY)  
PIN  
1 N/C  
2 BLK(W7510) READY TO OPERATE  
3 BLK(W7530) PUMP  
4 BLK(W7501) EXTEND (ROOM 2)  
5 BLK(W7502) RETRACT (ROOM 2)  
6 RED(W6805) SW BATTERY  
7 BLK(W7696) SYSTEM WAKE UP  
8 WHT(W6230) GROUND

AP26272 CN12 (GRAY)  
PIN  
1 LOWER FRONT UNLOCK (OEM)  
2 FRONT ROOM OUT (OEM)  
3 LOWER FRONT ROOM IN (OEM)  
4 LOWER FRONT LOCKED (OEM)  
5 N/C  
6 GROUND (OEM)  
7 SWITCHED BATTERY (OEM)  
8 N/C  
9 UPPER FRONT LOCKED (OEM)  
10 UPPER FRONT ROOM IN (OEM)  
11 N/C  
12 UPPER FRONT UNLOCK (OEM)

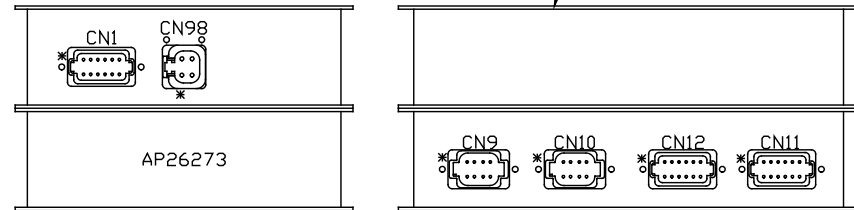
AP26272 CN 11 (GREEN)  
PIN  
1 LOWER REAR UNLOCK (OEM)  
2 REAR ROOM OUT (OEM)  
3 LOWER REAR ROOM IN (OEM)  
4 LOWER REAR LOCK (OEM)  
5 N/C  
6 GROUND (OEM)  
7 SWITCHED BATTERY (OEM)  
8 N/C  
9 UPPER REAR LOCK (OEM)  
10 UPPER REAR ROOM IN (OEM)  
11 N/C  
12 UPPER REAR UNLOCK (OEM)

CN1 (BROWN)  
PIN  
1 N/C  
2 AIR SEAL (OEM)  
3 N/C  
4 N/C  
5 N/C  
6 N/C  
7 N/C  
8 N/C  
9 N/C  
10 N/C  
11 GROUND (OEM)  
12 N/C

CN98 (GRAY)  
PIN  
1 BLK(W6800) SW BATT  
2 BLK(W6800) SW BATT  
3 WHT(W6230) GROUND  
4 WHT(W6230) GROUND

AP24783  
ROOM 3 MODULE

NOTE: THIS RING IS NOT  
PRESENT ON SOME BOXES.



\* DESIGNATES PIN 1 OF CONNECTORS

AP26273 CN9 (BLACK)  
PIN  
1 BLK(W7696) SYSTEM WAKE UP  
2 N/C  
3 RED(W6800) SW BATT  
4 WHT(W6230) GROUND  
5 CAN SHIELD  
6 RED(W6110) IGNITION  
7 GRN CAN LOW  
8 YEL CAN HI

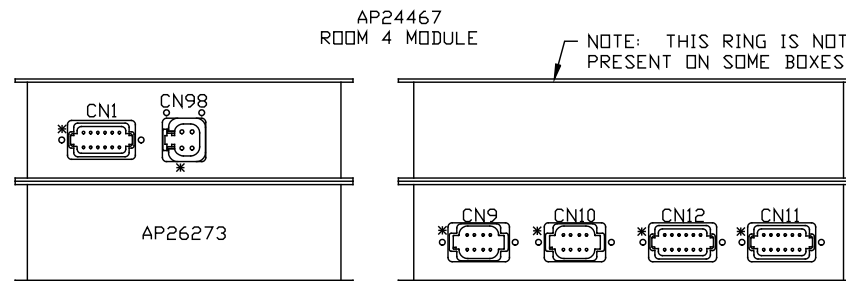
AP26273 CN10 (GRAY)  
PIN  
1 N/C  
2 BLK(W7510) READY TO OPERATE  
3 BLK(W7530) PUMP  
4 BLK(W7501) EXTEND (ROOM 3)  
5 BLK(W7502) RETRACT (ROOM 3)  
6 RED(W6805) SW BATTERY  
7 BLK(W7696) SYSTEM WAKE UP  
8 WHT(W6230) GROUND

AP26273 CN12 (GRAY)  
PIN  
1 LOWER FRONT UNLOCK (OEM)  
2 FRONT ROOM OUT (OEM)  
3 LOWER FRONT ROOM IN (OEM)  
4 LOWER FRONT LOCKED (OEM)  
5 N/C  
6 GROUND (OEM)  
7 SWITCHED BATTERY (OEM)  
8 N/C  
9 UPPER FRONT LOCKED (OEM)  
10 UPPER FRONT ROOM IN (OEM)  
11 N/C  
12 UPPER FRONT UNLOCK (OEM)

AP26273 CN 11 (GREEN)  
PIN  
1 LOWER REAR UNLOCK (OEM)  
2 REAR ROOM OUT (OEM)  
3 LOWER REAR ROOM IN (OEM)  
4 LOWER REAR LOCK (OEM)  
5 N/C  
6 GROUND (OEM)  
7 SWITCHED BATTERY (OEM)  
8 N/C  
9 UPPER REAR LOCK (OEM)  
10 UPPER REAR ROOM IN (OEM)  
11 N/C  
12 UPPER REAR UNLOCK (OEM)

CN1 (BROWN)  
PIN  
1 N/C  
2 AIR SEAL (OEM)  
3 N/C  
4 N/C  
5 N/C  
6 N/C  
7 N/C  
8 N/C  
9 N/C  
10 N/C  
11 GROUND (OEM)  
12 N/C

CN98 (GRAY)  
PIN  
1 BLK (W6800) SW BATT  
2 BLK (W6800) SW BATT  
3 WHT (W6230) GROUND  
4 WHT (W6230) GROUND



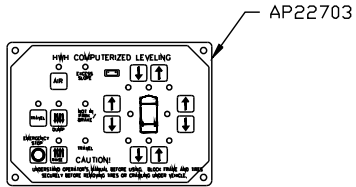
\* DESIGNATES PIN 1 OF CONNECTORS

AP26273 CN9 (BLACK)  
PIN  
1 BLK (W7696) SYSTEM WAKE UP  
2 N/C  
3 RED (W6800) SW BATT  
4 WHT (W6230) GROUND  
5 CAN SHIELD  
6 RED (W6110) IGNITION  
7 GRN CAN LOW  
8 YEL CAN HI

AP26273 CN10 (GRAY)  
PIN  
1 N/C  
2 BLK (W7510) READY TO OPERATE  
3 BLK (W7530) PUMP  
4 BLK (W7501) EXTEND (ROOM 4)  
5 BLK (W7502) RETRACT (ROOM 4)  
6 RED (W6805) SW BATTERY  
7 BLK (W7696) SYSTEM WAKE UP  
8 WHT (W6230) GROUND

AP26273 CN12 (GRAY)  
PIN  
1 LOWER FRONT UNLOCK (OEM)  
2 FRONT ROOM OUT (OEM)  
3 LOWER FRONT ROOM IN (OEM)  
4 LOWER FRONT LOCKED (OEM)  
5 N/C  
6 GROUND (OEM)  
7 SWITCHED BATTERY (OEM)  
8 N/C  
9 UPPER FRONT LOCKED (OEM)  
10 UPPER FRONT ROOM IN (OEM)  
11 PSW SYNCH CYLINDER (OEM)  
12 UPPER FRONT UNLOCK (OEM)

AP26273 CN 11 (GREEN)  
PIN  
1 LOWER REAR UNLOCK (OEM)  
2 REAR ROOM OUT (OEM)  
3 LOWER REAR ROOM IN (OEM)  
4 LOWER REAR LOCK (OEM)  
5 N/C  
6 GROUND (OEM)  
7 SWITCHED BATTERY (OEM)  
8 N/C  
9 UPPER REAR LOCK (OEM)  
10 UPPER REAR ROOM IN (OEM)  
11 N/C  
12 UPPER REAR UNLOCK (OEM)



5 1

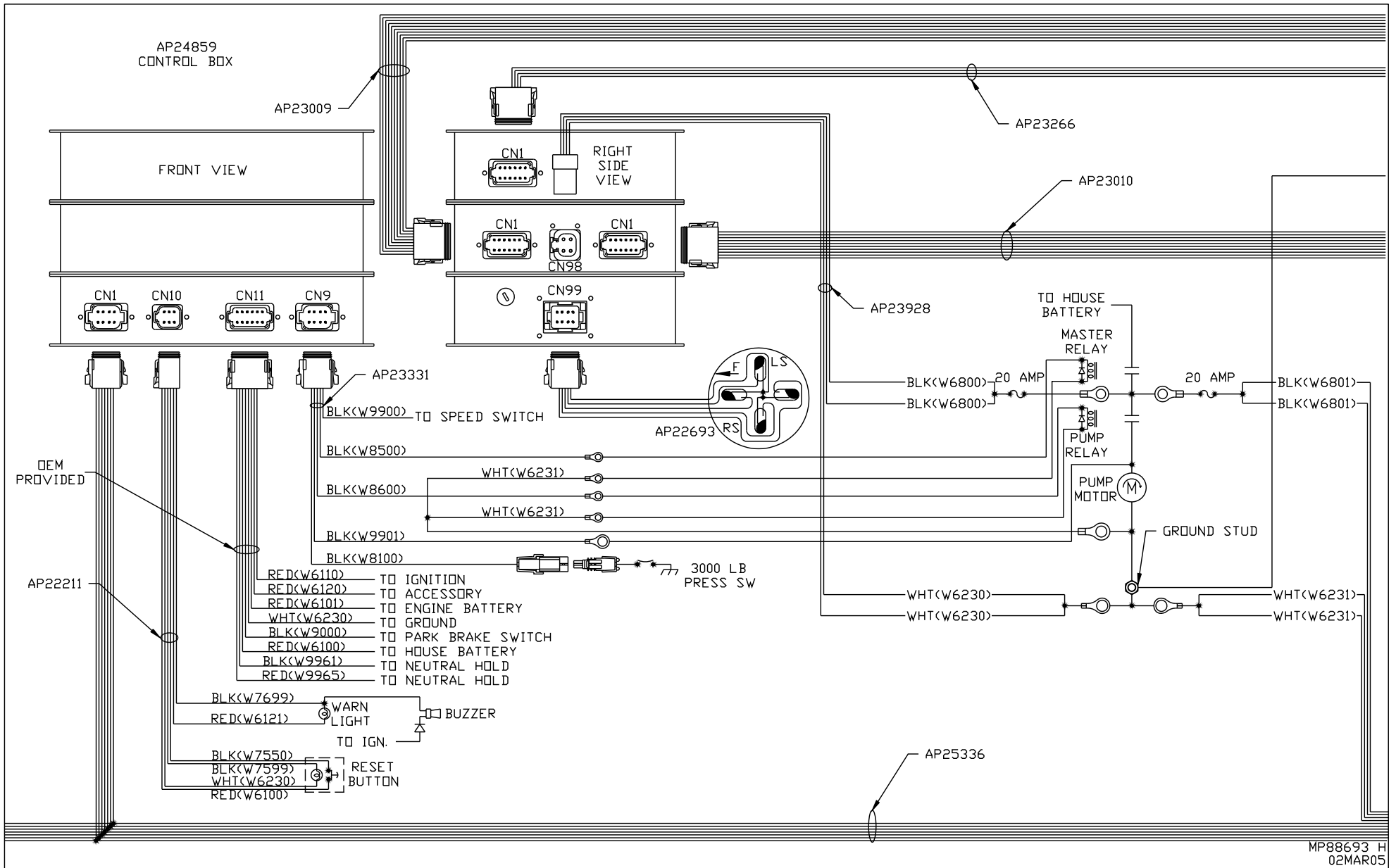
- PIN
- 1 YELLOW CAN HI
  - 2 GREEN CAN LOW
  - 3 CAN SHIELD
  - 4 WHT(W6230) GROUND
  - 5 BLK(W6800) SW. BATTERY

TO SILVER LEAF INTERFACE.

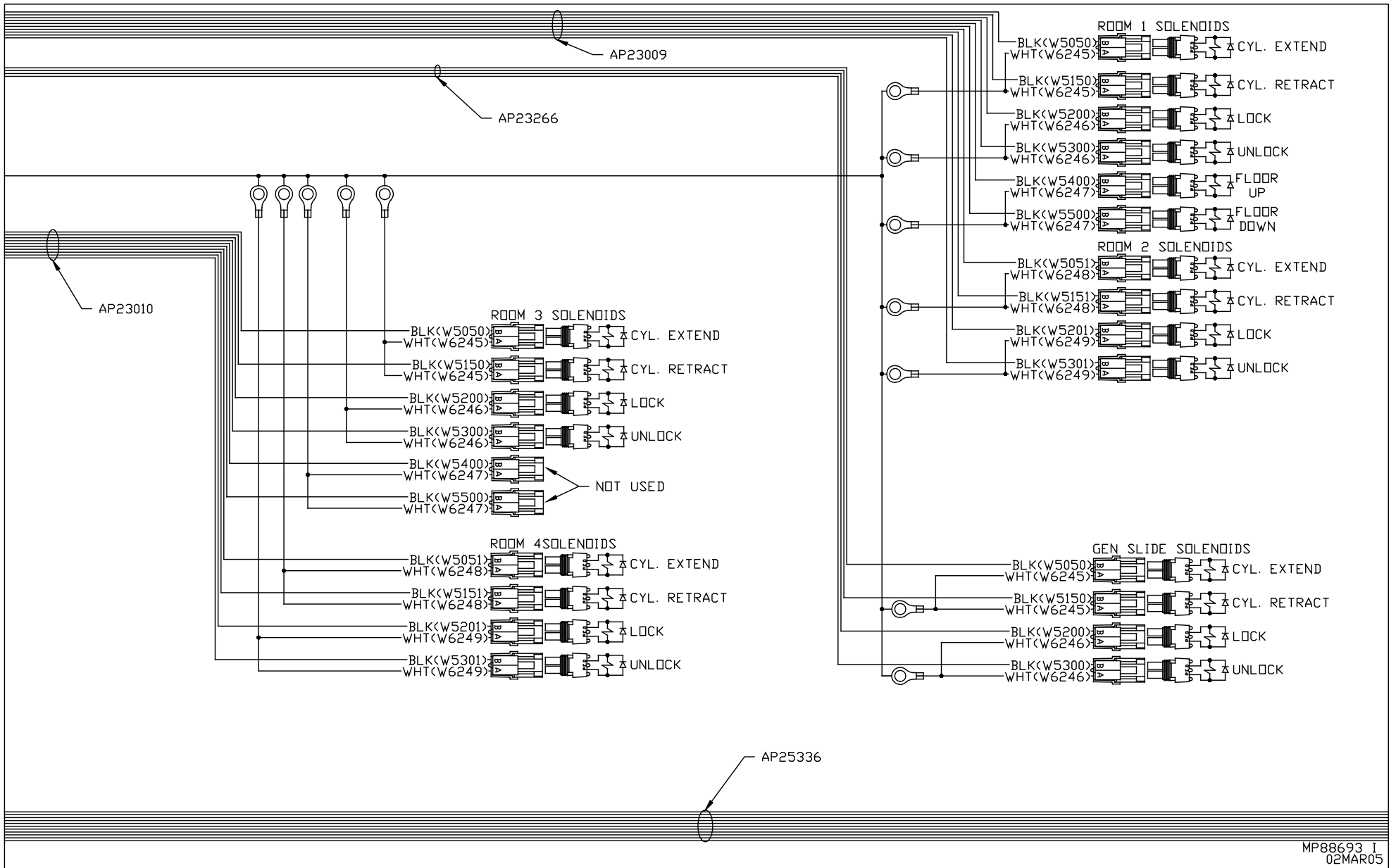
- <BLACK>  
PIN
- 1 BLK(W7696) SYSTEM WAKE UP
  - 2 N/C
  - 3 RED(W6800) SW BATT
  - 4 WHT(W6230) GND
  - 5 CAN SHIELD
  - 6 RED(W6110) IGNITION
  - 7 GRN CAN LOW
  - 8 YEL CAN HI

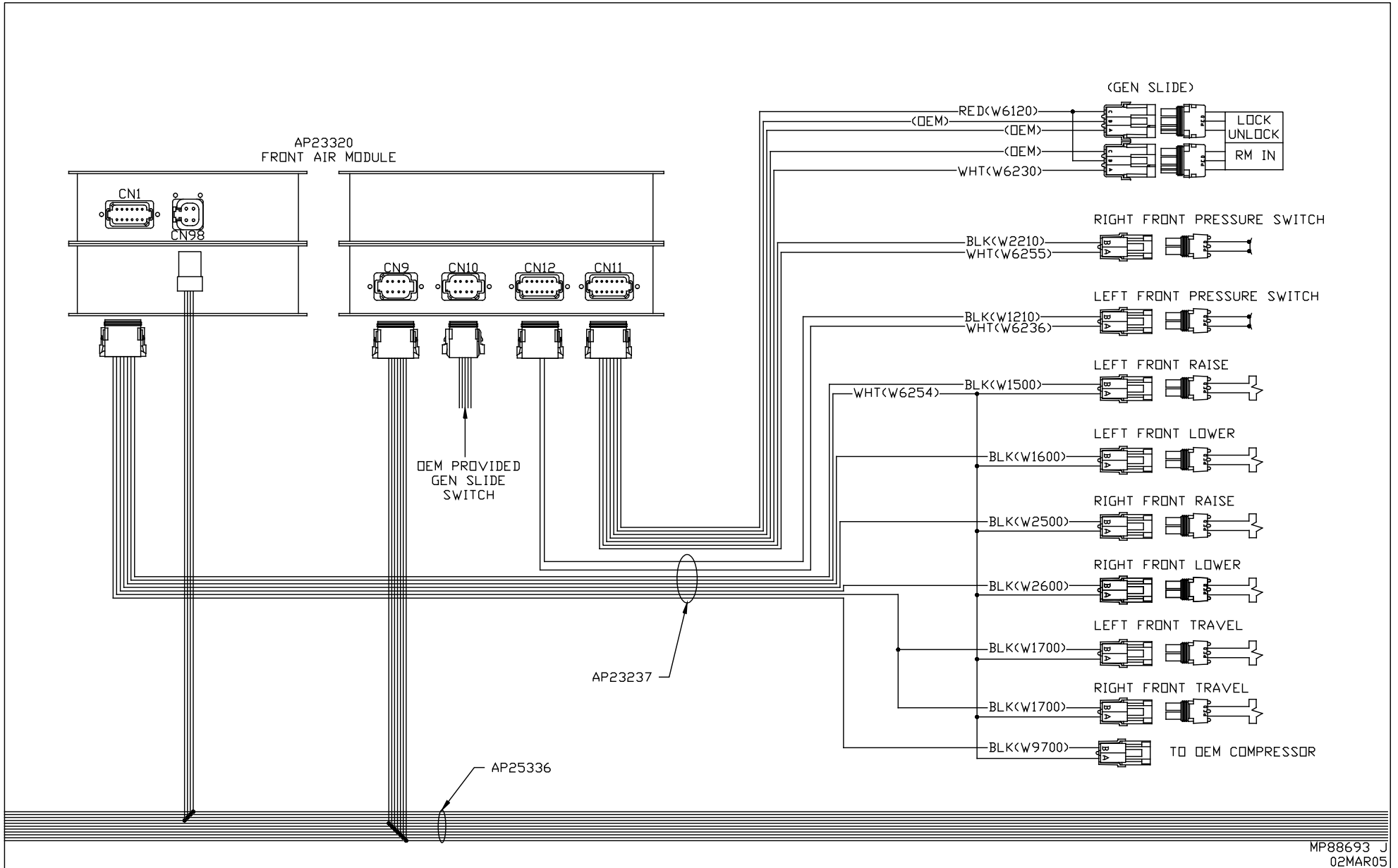
120 OHM  
TERMINATION  
RESISTOR  
PART OF AP25336

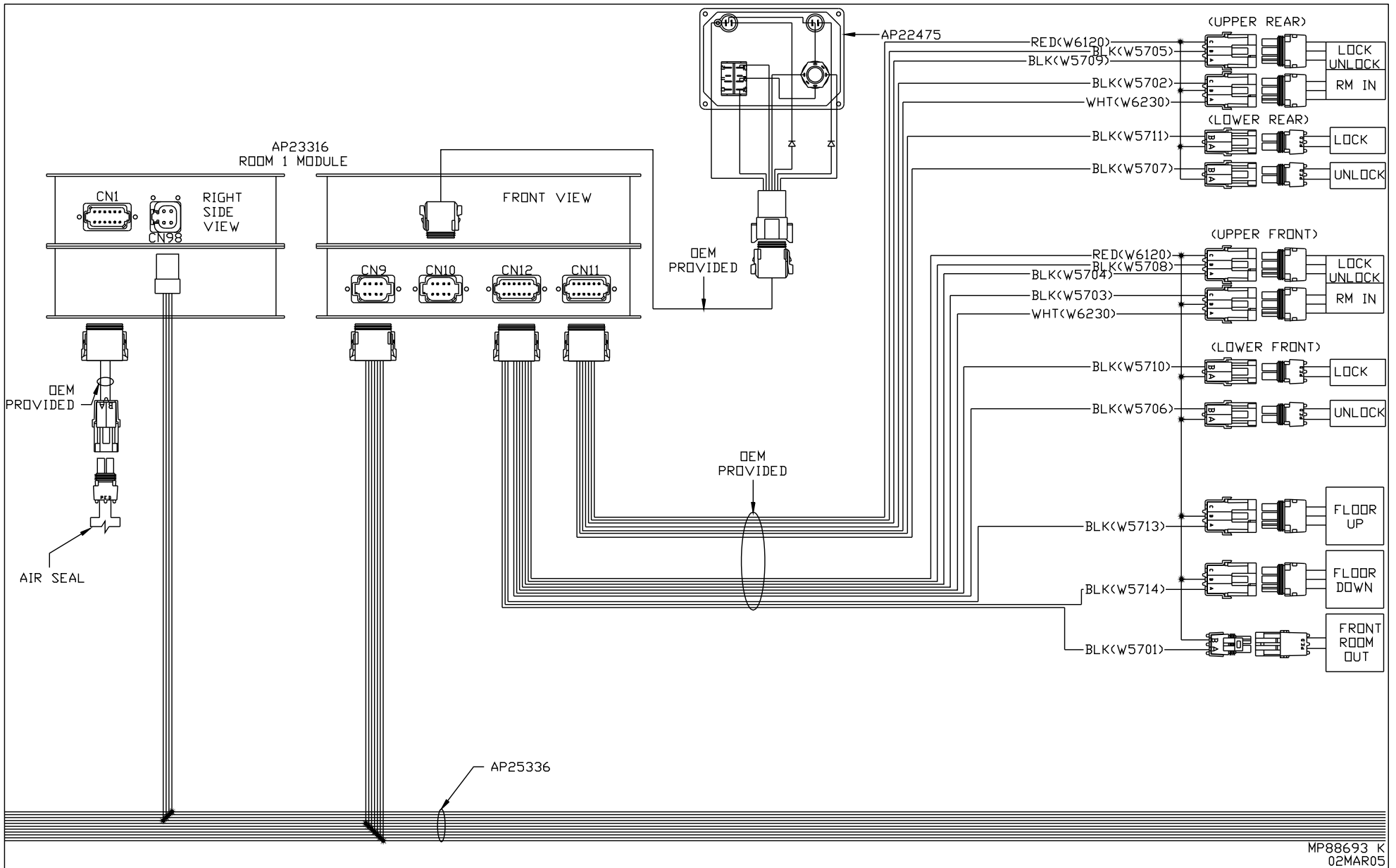
AP25336

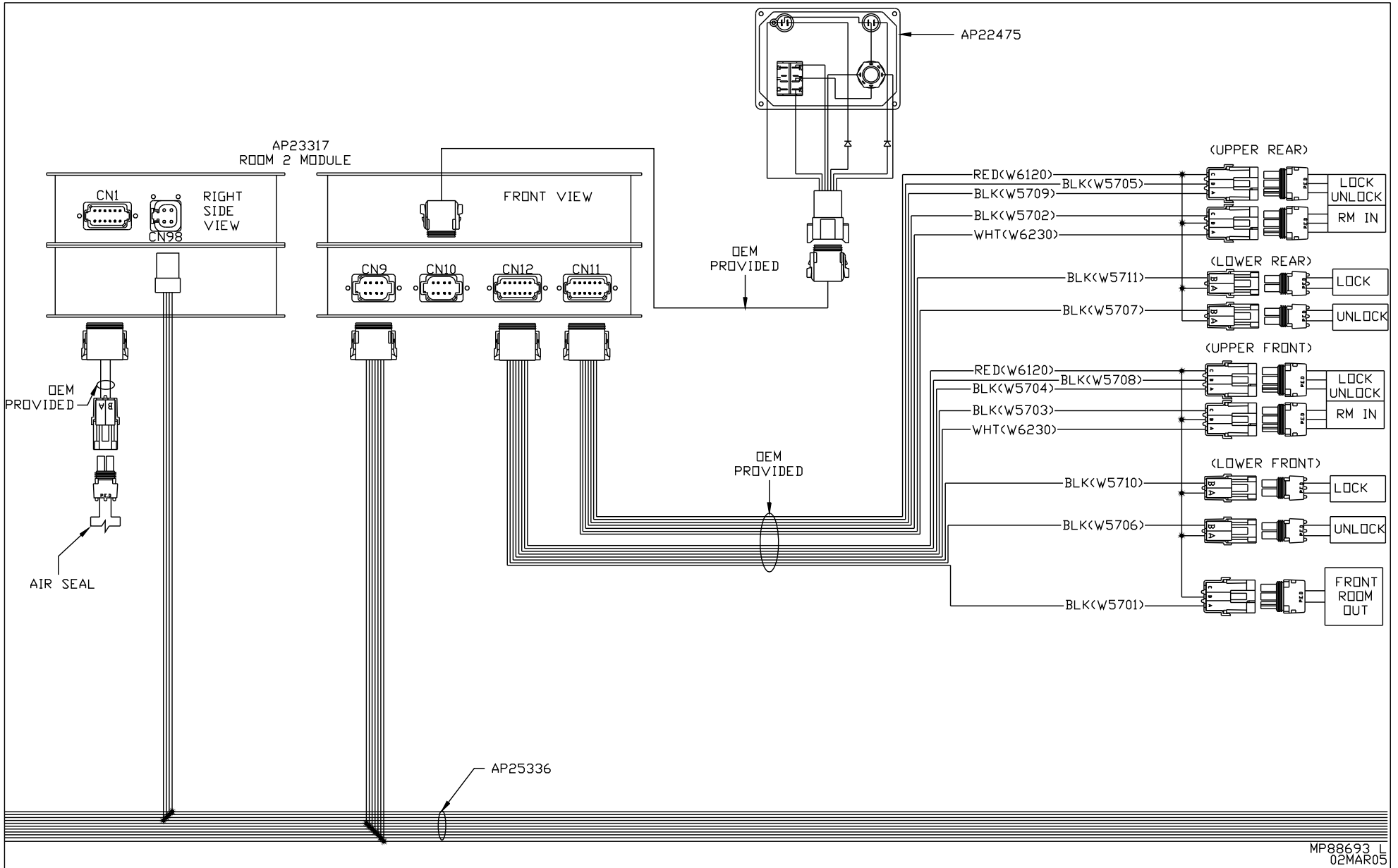


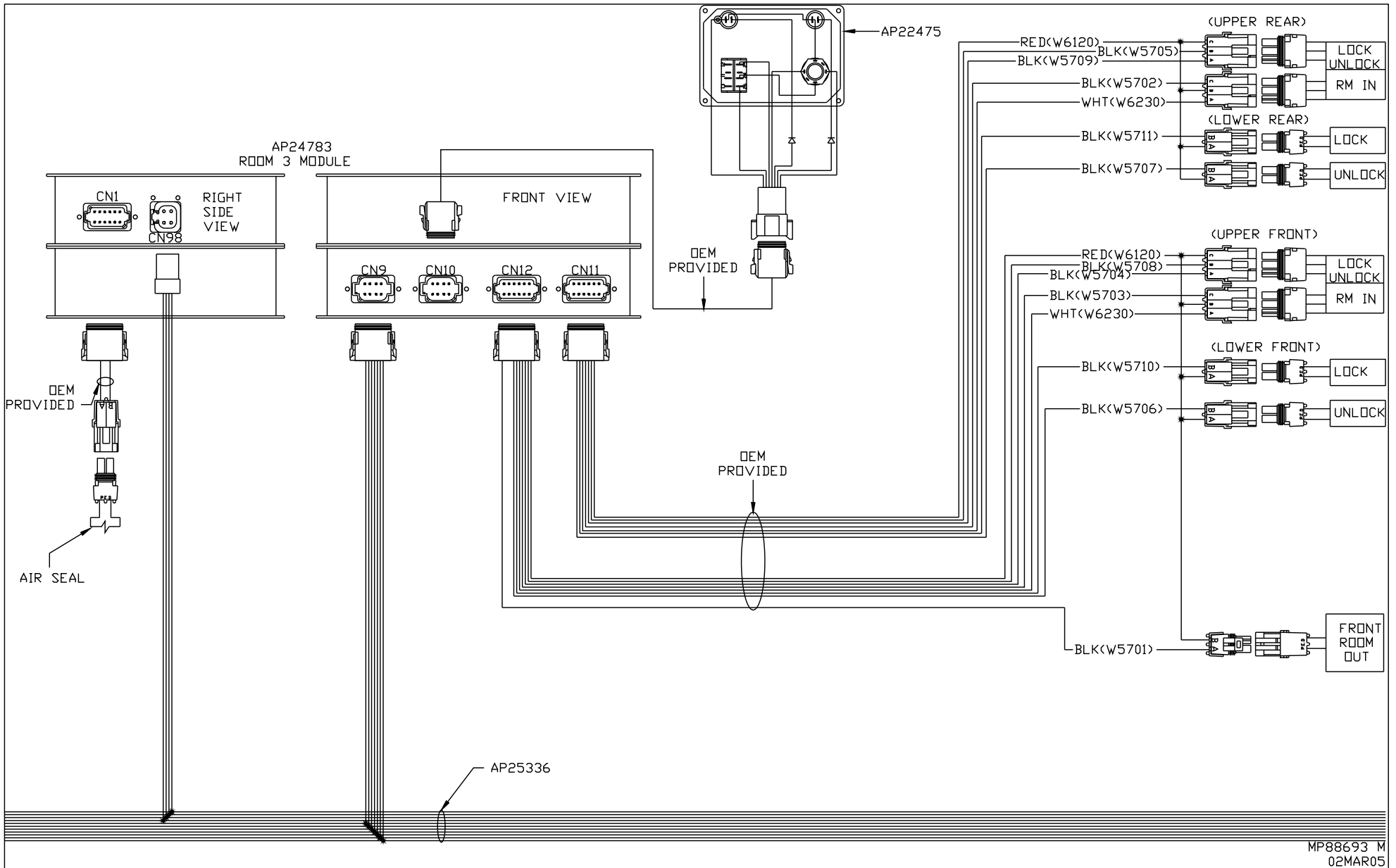


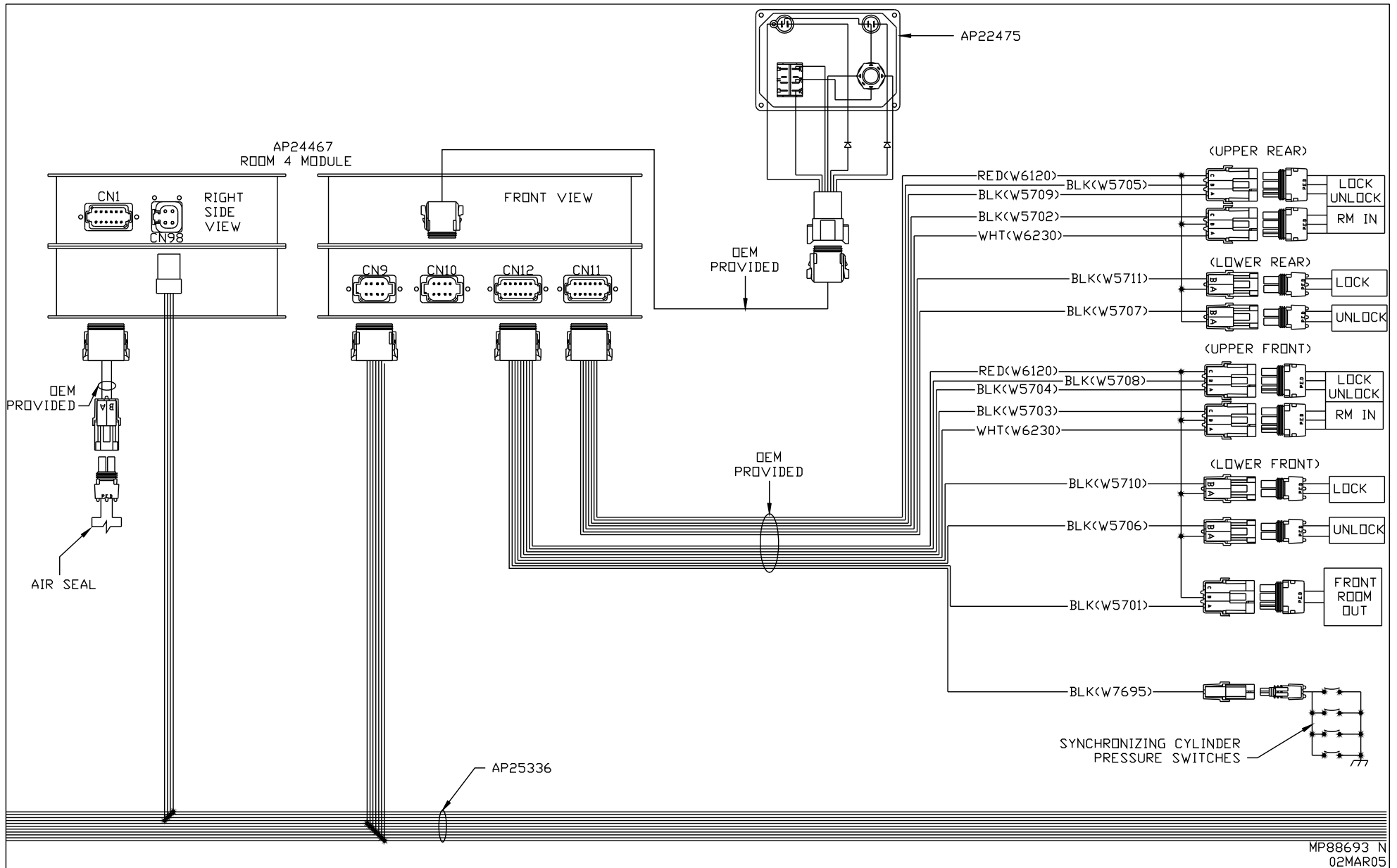




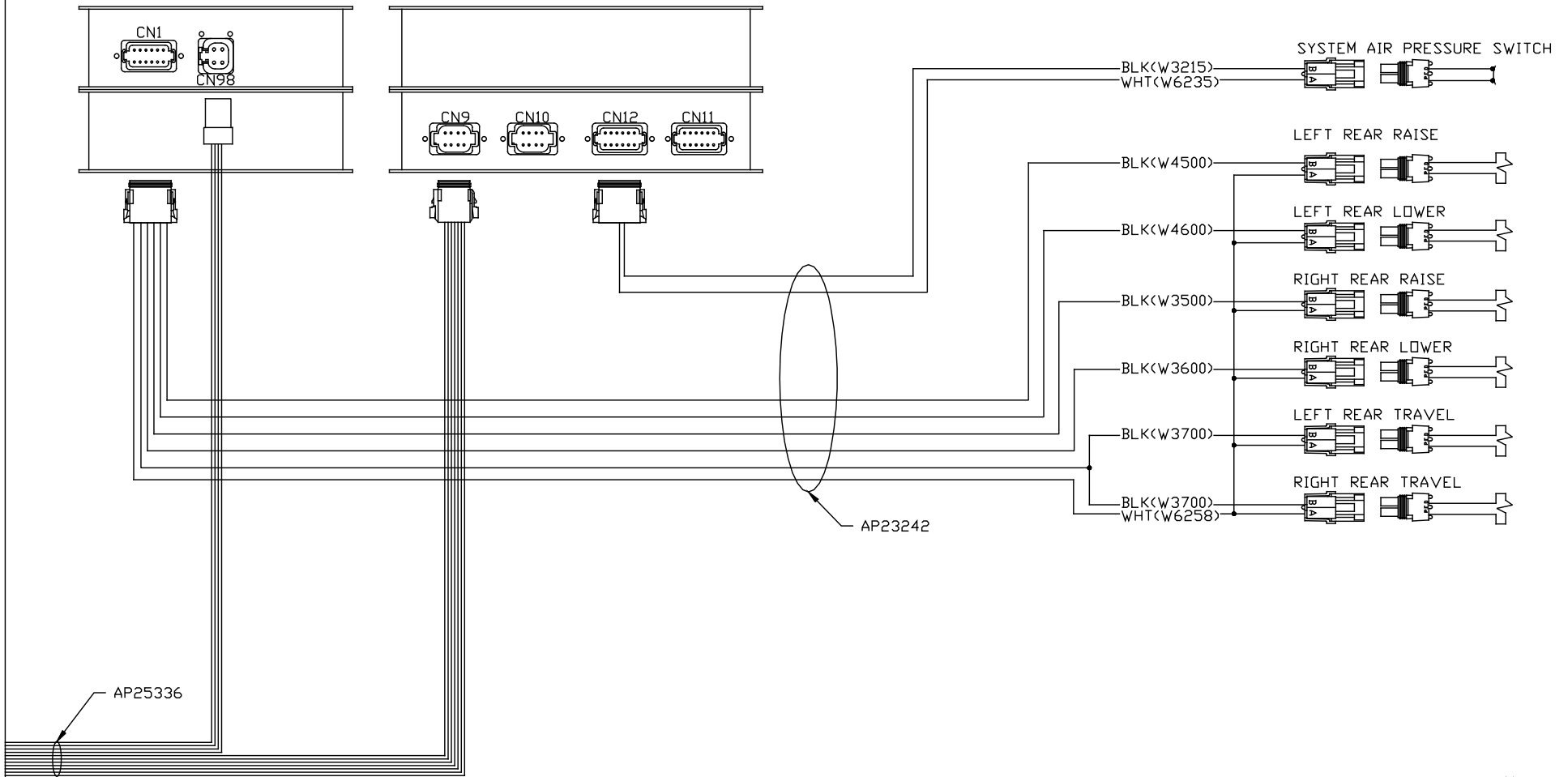


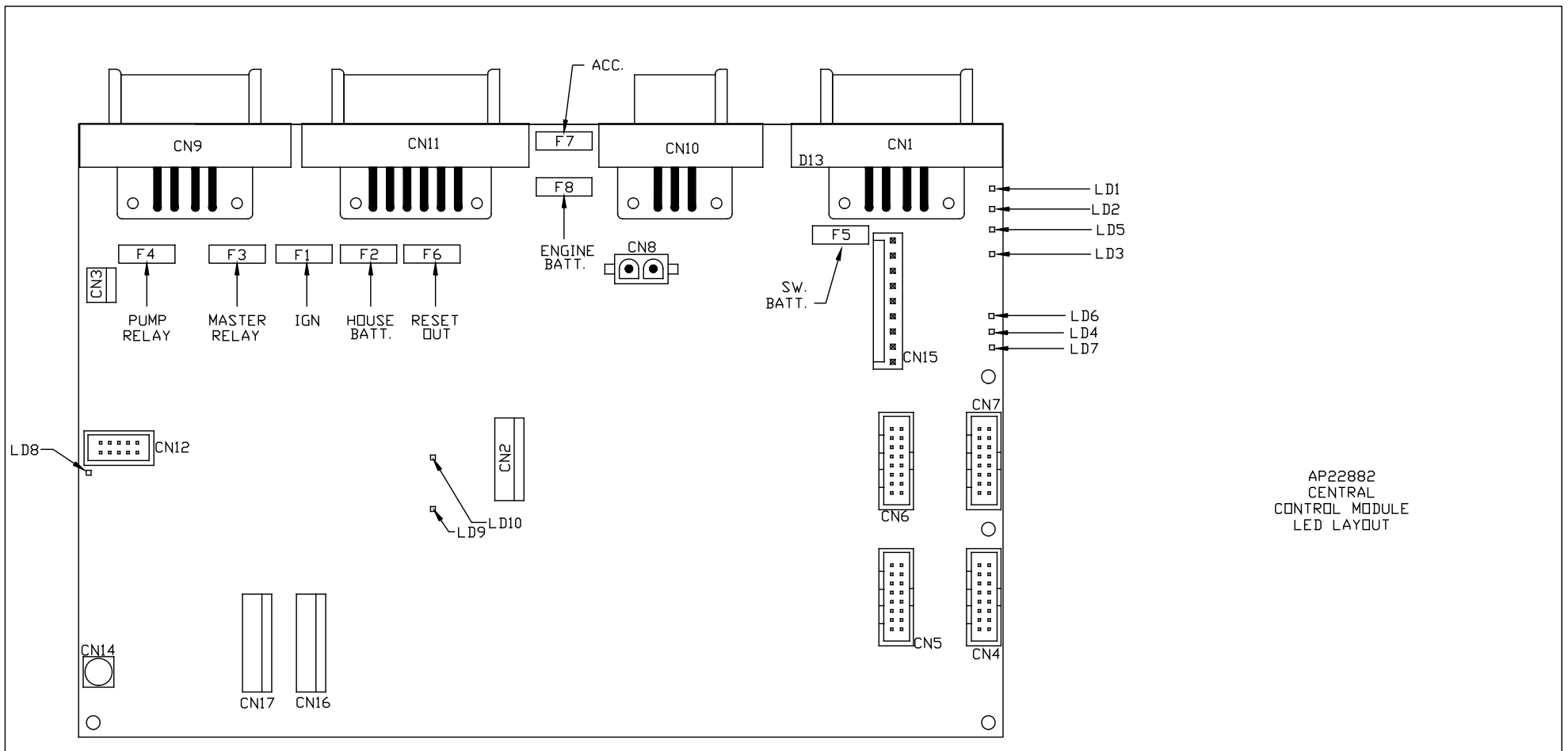






AP23321  
REAR AIR MODULE

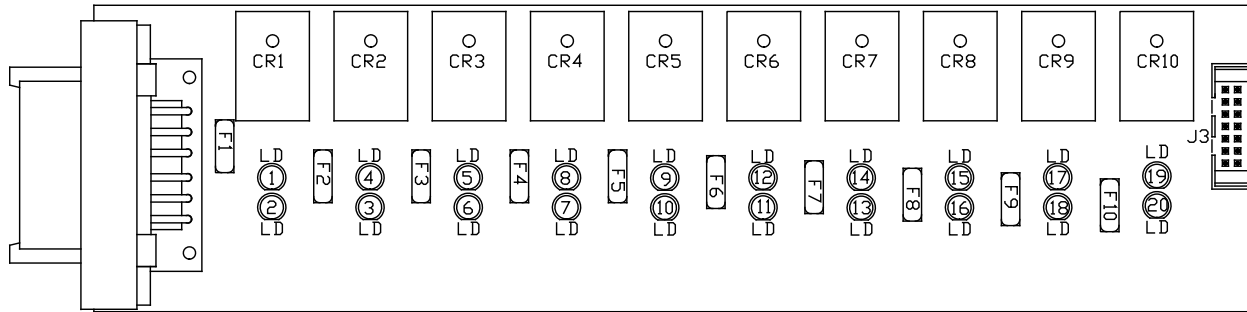




AP22882  
CENTRAL  
CONTROL MODULE  
LED LAYOUT

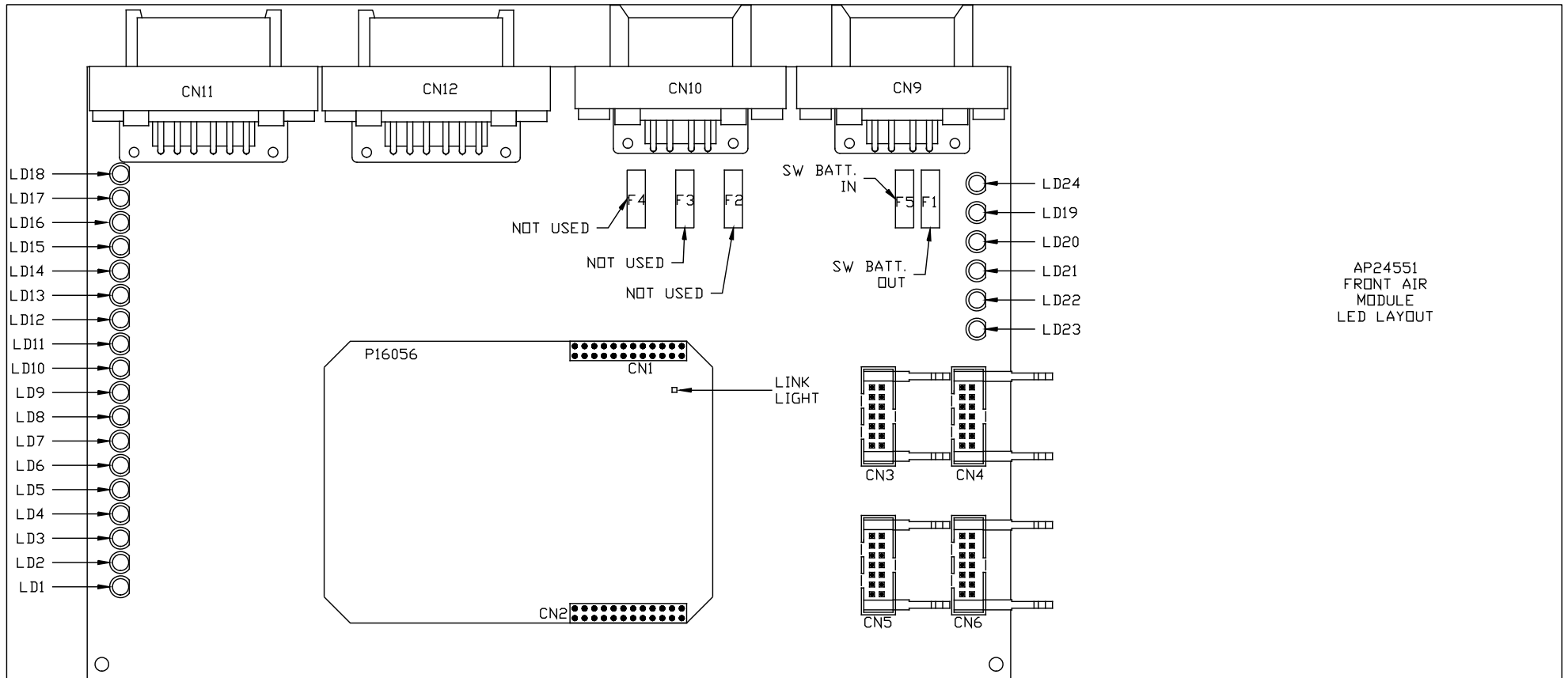
LED #	CONNECTOR	COLOR	DESCRIPTION
LED 1	CN 9 PIN 1	RED	MASTER RELAY
LED 2	CN 9 PIN 4	RED	PUMP RELAY
LED 3	CN 1 PIN 3	RED	SW 12V
LED 4	CN 11 PIN 12	RED	ENGINE BATT
LED 5	CN 9 PIN 5	RED	SPEED SWITCH
LED 6	NOT USED	NOT USED	NOT USED
LED 7	CN 1 PIN 7 & 8	RED	LINK LIGHT
LED 8	CN 11 PIN 8 & 9	RED	NEUTRAL HOLD
LED 9	NOT USED	NOT USED	NOT USED
LED 10	CN9 PIN 2	RED	3000 LBS. PSW





LED #	COLOR	INPUT J3	FUSE #	OUTPUT	RELAY #	DESCRIPTION
LED1	YELLOW	PIN 13	---	---	CR1	EXTEND CYL. RM 1 <COIL>
LED2	RED	---	FUSE 1	PIN 1	CR1	EXTEND CYL. RM 1 <CONTACT>
LED3	RED	---	FUSE 2	PIN 2	CR2	RETRACT CYL. RM 1 <CONTACT>
LED4	YELLOW	PIN 12	---	---	CR2	RETRACT CYL. RM 1 <COIL>
LED5	YELLOW	PIN 11	---	---	CR3	LOCK RM 1 <COIL>
LED6	RED	---	FUSE 3	PIN 3	CR3	LOCK RM 1 <CONTACT>
LED7	RED	---	FUSE 4	PIN 4	CR4	UNLOCK RM 1 <CONTACT>
LED8	YELLOW	PIN 10	---	---	CR4	UNLOCK RM 1 <COIL>
LED9	YELLOW	PIN 9	---	---	CR5	RM 1 FLOOR UP <COIL>
LED10	RED	---	FUSE 5	PIN 5	CR5	RM 1 FLOOR UP <CONTACT>
LED11	RED	---	FUSE 6	PIN 6	CR6	RM 1 FLOOR DOWN <CONTACT>
LED12	YELLOW	PIN 8	---	---	CR6	RM 1 FLOOR DOWN <COIL>
LED13	RED	---	FUSE 7	PIN 10	CR7	EXTEND CYL. RM 2 <CONTACT>
LED14	YELLOW	PIN 7	---	---	CR7	EXTEND CYL. RM 2 <COIL>
LED15	YELLOW	PIN 6	---	---	CR8	RETRACT CYL. RM 2 <COIL>
LED16	RED	---	FUSE8	PIN 9	CR8	RETRACT CYL. RM 2 <CONTACT>
LED17	YELLOW	PIN 5	---	---	CR9	LOCK RM 2 <COIL>
LED18	RED	---	FUSE 9	PIN 7	CR9	LOCK RM 2 <CONTACT>
LED19	YELLOW	PIN 4	---	---	CR10	UNLOCK RM 2 <COIL>
LED20	RED	---	FUSE 10	PIN 8	CR10	UNLOCK RM 2 <CONTACT>

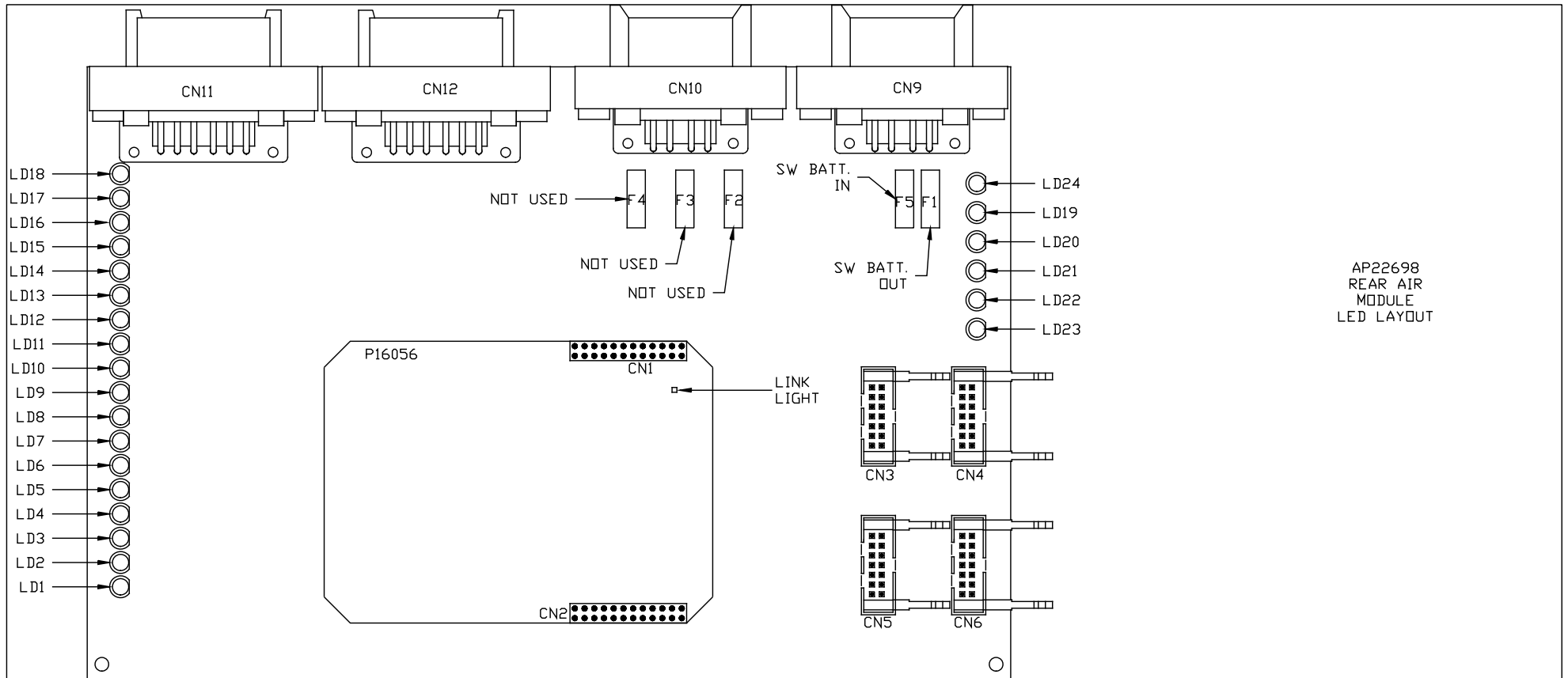
AP23323  
ROOM 1 AND ROOM 2  
LED LAYOUT



AP24551  
FRONT AIR  
MODULE  
LED LAYOUT

LED #	CONNECTOR	COLOR	DESCRIPTION
LED 1	CN 10 PIN 4	RED	EXTEND
LED 2	CN 10 PIN 5	RED	RETRACT
LED 3	NOT USED	GREEN	NOT USED
LED 4	NOT USED	YELLOW	NOT USED
LED 5	NOT USED	YELLOW	NOT USED
LED 6	CN 12 PIN 2	YELLOW	GEN SLIDE IN
LED 7	NOT USED	GREEN	NOT USED
LED 8	CN 12 PIN 3	GREEN	GEN SLIDE LOCK
LED 9	CN 11 PIN 10	GREEN	LEFT FRONT PSW
LED 10	CN 12 PIN 10	GREEN	RIGHT FRONT PSW
LED 11	NOT USED	YELLOW	NOT USED
LED 12	CN 12 PIN 1	YELLOW	GEN SLIDE UNLOCK
LED 13	NOT USED	YELLOW	NOT USED
LED 14	NOT USED	YELLOW	NOT USED

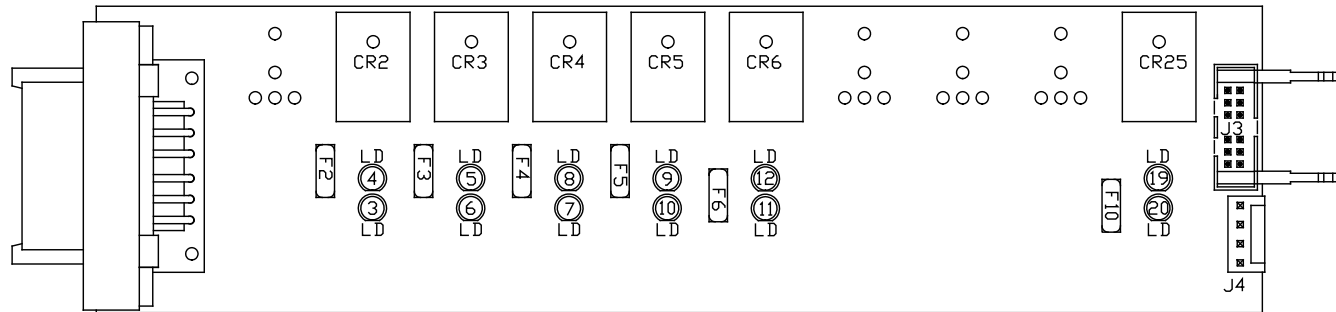
LED #	CONNECTOR	COLOR	DESCRIPTION
LED 15	NOT USED	GREEN	NOT USED
LED 16	NOT USED	GREEN	NOT USED
LED 17	NOT USED	GREEN	NOT USED
LED 18	NOT USED	GREEN	NOT USED
LED 19	NOT USED	RED	SW BATT OUT
LED 20	NOT USED	RED	SW BATT IN
LED 21	NOT USED	RED	NOT USED
LED 22	NOT USED	RED	NOT USED
LED 23	NOT USED	RED	NOT USED
LED 24	NOT USED	RED	NOT USED
LED 25	---	---	---
LED 26	---	---	---
LED 27	---	---	---
LED 28	---	---	---



AP22698  
REAR AIR  
MODULE  
LED LAYOUT

LED #	CONNECTOR	COLOR	DESCRIPTION
LED 1	NOT USED	RED	NOT USED
LED 2	NOT USED	RED	NOT USED
LED 3	NOT USED	GREEN	NOT USED
LED 4	NOT USED	YELLOW	NOT USED
LED 5	NOT USED	YELLOW	NOT USED
LED 6	NOT USED	YELLOW	NOT USED
LED 7	NOT USED	GREEN	NOT USED
LED 8	CN 12 PIN 3	GREEN	SYSTEM PRESS SW
LED 9	NOT USED	GREEN	NOT USED
LED 10	NOT USED	GREEN	NOT USED
LED 11	NOT USED	YELLOW	NOT USED
LED 12	NOT USED	YELLOW	NOT USED
LED 13	NOT USED	YELLOW	NOT USED
LED 14	NOT USED	YELLOW	NOT USED

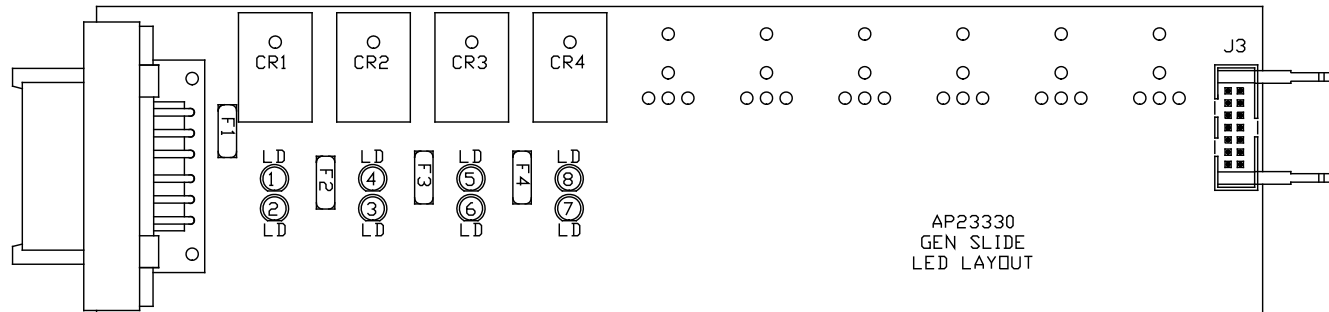
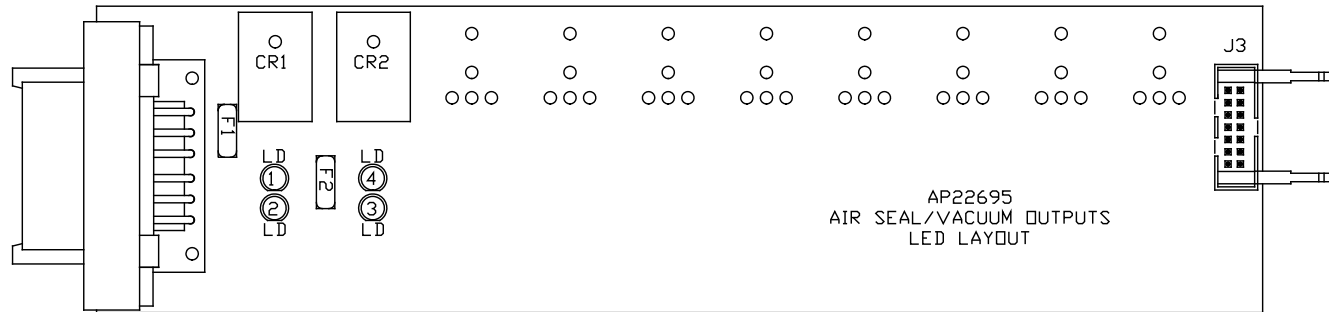
LED #	CONNECTOR	COLOR	DESCRIPTION
LED 15	NOT USED	GREEN	NOT USED
LED 16	NOT USED	GREEN	NOT USED
LED 17	NOT USED	GREEN	NOT USED
LED 18	NOT USED	GREEN	NOT USED
LED 19	NOT USED	RED	SW BATT OUT
LED 20	NOT USED	RED	SW BATT IN
LED 21	NOT USED	RED	NOT USED
LED 22	NOT USED	RED	NOT USED
LED 23	NOT USED	RED	NOT USED
LED 24	NOT USED	RED	NOT USED
LED 25	---	---	---
LED 26	---	---	---
LED 27	---	---	---
LED 28	---	---	---



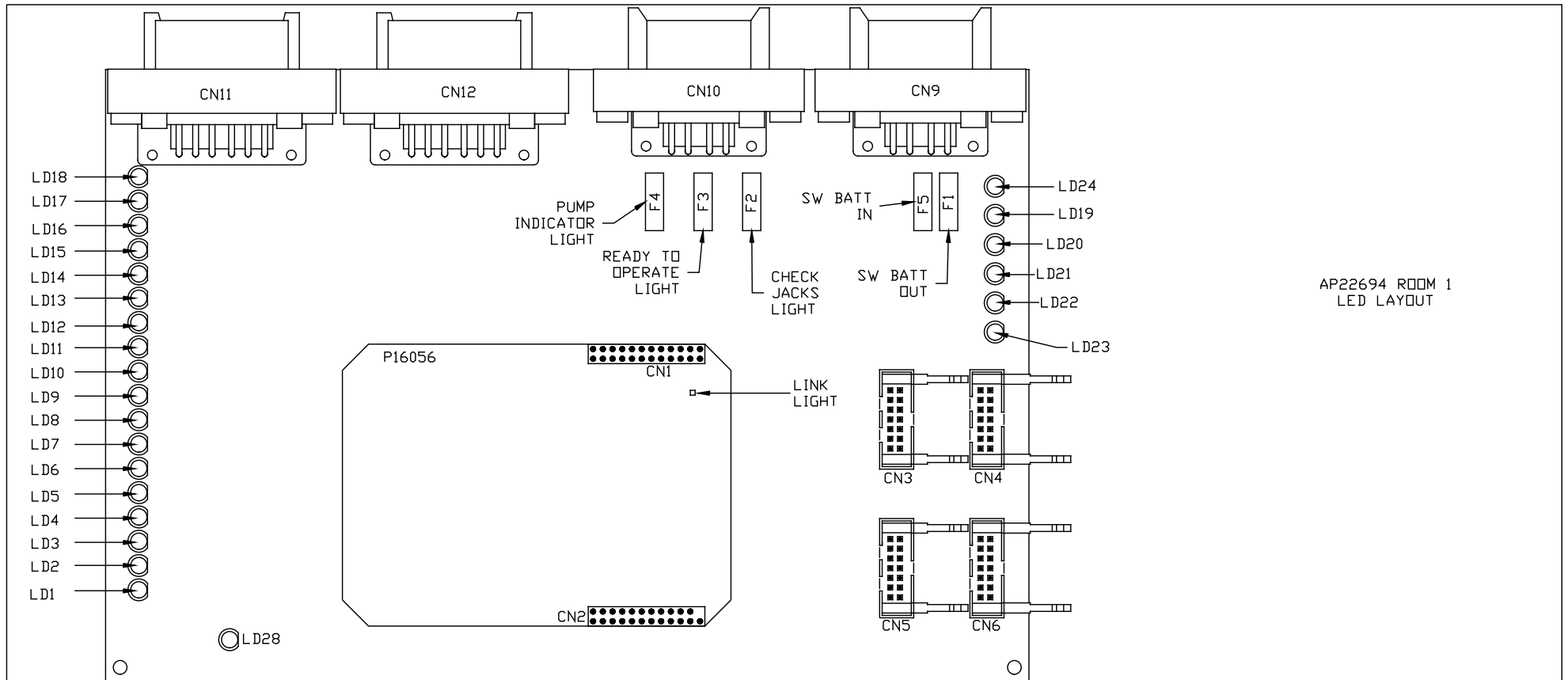
AP22521  
FRONT & REAR  
AIR  
LED LAYOUT

LED #	COLOR	INPUT J3	FUSE #	OUTPUT	RELAY #	DESCRIPTION
LED1	---	---	---	---	---	---
LED2	---	---	---	---	---	---
LED3	RED	---	FUSE 2	PIN 2	CR2	LEFT RAISE (CONTACT)
LED4	YELLOW	PIN 12	---	---	CR2	LEFT RAISE (COIL)
LED5	YELLOW	PIN 11	---	---	CR3	LEFT LOWER (COIL)
LED6	RED	---	FUSE 3	PIN 3	CR3	LEFT LOWER (CONTACT)
LED7	RED	---	FUSE 4	PIN 4	CR4	RIGHT RAISE (CONTACT)
LED8	YELLOW	PIN 10	---	---	CR4	RIGHT RAISE (COIL)
LED9	YELLOW	PIN 9	---	---	CR5	RIGHT LOWER (COIL)
LED10	RED	---	FUSE 5	PIN 5	CR5	RIGHT LOWER (CONTACT)
LED11	RED	---	FUSE 6	PIN 6	CR6	COMPRESSOR (CONTACT)
LED12	YELLOW	PIN 8	---	---	CR6	COMPRESSOR (COIL)
LED13	---	---	---	---	---	---
LED14	---	---	---	---	---	---
LED15	---	---	---	---	---	---
LED16	---	---	---	---	---	---
LED17	---	---	---	---	---	---
LED18	---	---	---	---	---	---
LED19	YELLOW	PIN 4	---	---	CR25	TRAVEL (COIL)
LED20	RED	---	FUSE 10	PIN 8	CR25	TRAVEL (CONTACT)

LED #	COLOR	INPUT J3	FUSE #	OUTPUT	RELAY #	DESCRIPTION
LED1	YELLOW	PIN 13	---	---	CR1	AIR SEAL <COIL>
LED2	RED	---	FUSE 1	PIN 1	CR1	AIR SEAL <CONTACT>
LED3	RED	---	FUSE 2	PIN 2	CR2	VACUUM <CONTACT>
LED4	YELLOW	PIN 12	---	---	CR2	VACUUM <COIL>

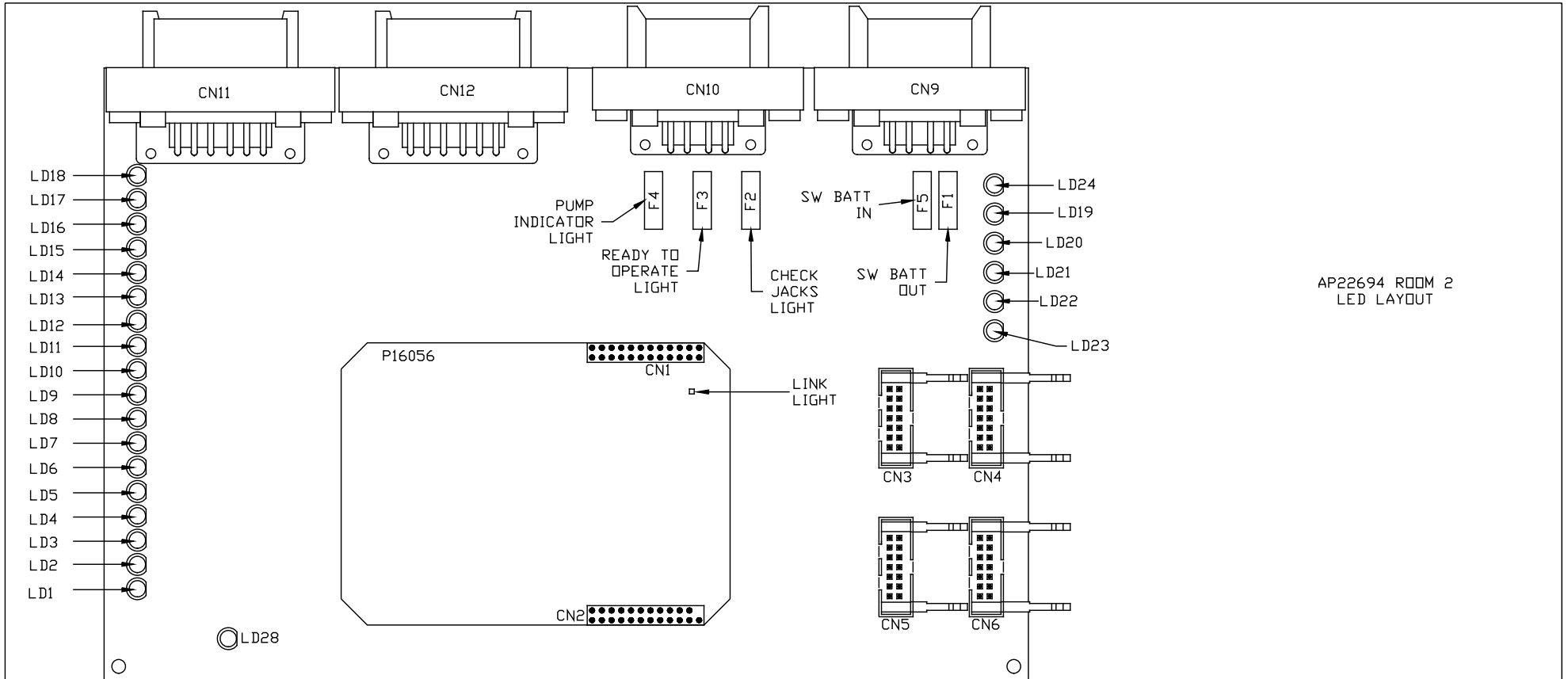


LED #	COLOR	INPUT J3	FUSE #	OUTPUT	RELAY #	DESCRIPTION
LED1	YELLOW	PIN 13	---	---	CR1	GEN SLIDE EXT <COIL>
LED2	RED	---	FUSE 1	PIN 1	CR1	GEN SLIDE EXT <CONTACT>
LED3	RED	---	FUSE 2	PIN 2	CR2	GEN SLIDE RET <CONTACT>
LED4	YELLOW	PIN 12	---	---	CR2	GEN SLIDE RET <COIL>
LED5	YELLOW	PIN 11	---	---	CR3	LOCK GEN SLIDE <COIL>
LED6	RED	---	FUSE 3	PIN 3	CR3	LOCK GEN SLIDE <CONTACT>
LED7	RED	---	FUSE 4	PIN 4	CR4	UNLOCK GEN <CONTACT>
LED8	YELLOW	PIN 10	---	---	CR4	UNLOCK GEN SLIDE <COIL>



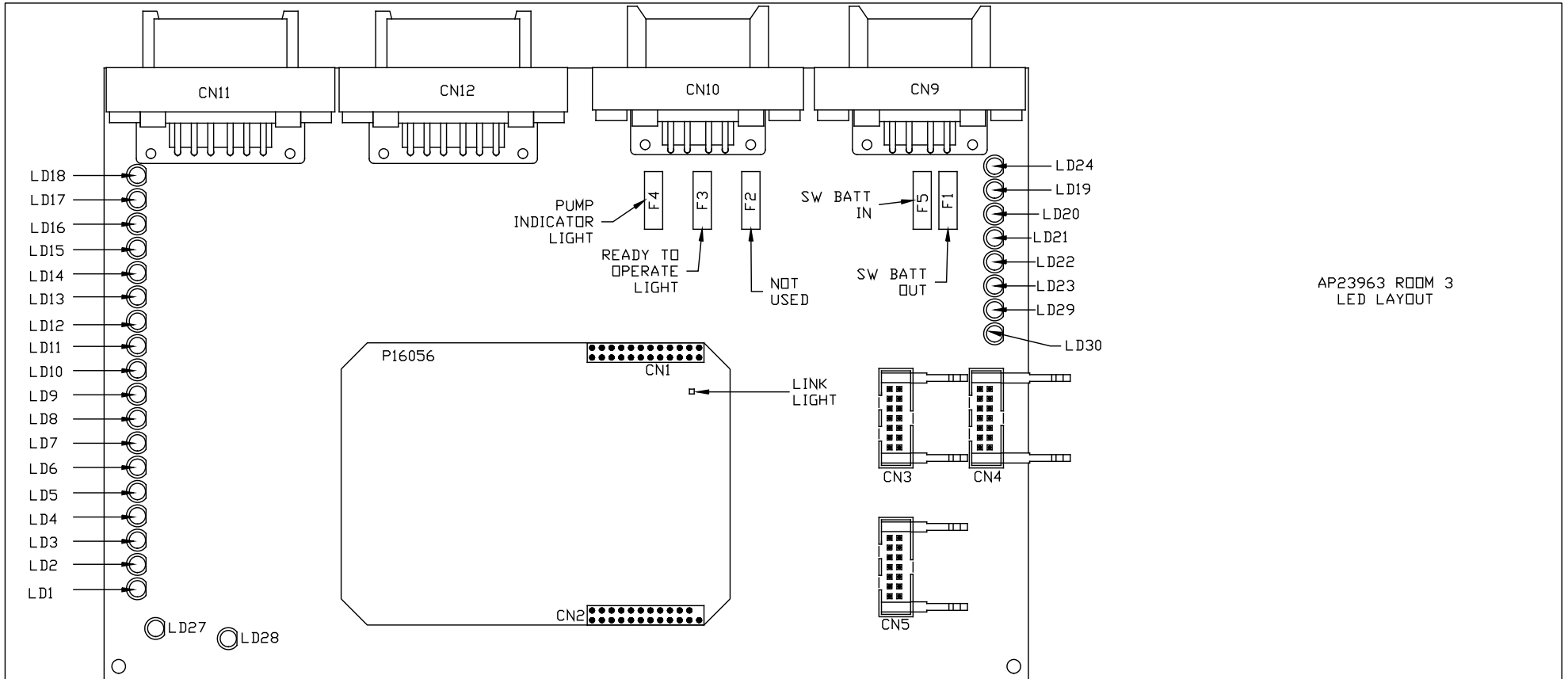
AP22694 ROOM 1  
LED LAYOUT

LED #	CONNECTOR	COLOR	DESCRIPTION	LED #	CONNECTOR	COLOR	DESCRIPTION
LED 1	CN 10 PIN 4	RED	EXTEND	LED 15	CN 11 PIN 4	GREEN	LR LOCK
LED 2	CN 10 PIN 5	RED	RETRACT	LED 16	CN 12 PIN 4	GREEN	LF LOCK
LED 3	CN12 PIN 8	GREEN	FLOOR UP	LED 17	CN 11 PIN 9	GREEN	UR LOCK
LED 4	CN12 PIN 5	YELLOW	FLOOR DOWN	LED 18	CN 12 PIN 9	GREEN	UF LOCK
LED 5	NOT USED	YELLOW	NOT USED	LED 19	CN11/CN12 PIN 7	RED	SW 12V
LED 6	CN 12 PIN 2	YELLOW	FRONT RM OUT	LED 20	CN9 PIN 3	RED	SW BATT
LED 7	NOT USED	GREEN	NOT USED	LED 21	CN10 PIN 3	RED	PUMP INDICATOR
LED 8	NOT USED	GREEN	NOT USED	LED 22	CN10 PIN 2	RED	READY TO OPERATE
LED 9	CN 11 PIN 10	GREEN	UR ROOM IN	LED 23	NOT USED	RED	NOT USED
LED 10	CN 12 PIN 10	GREEN	UF ROOM IN	LED 24	CN 10 PIN 7	RED	SYSTEM WAKE UP
LED 11	CN 11 PIN 1	YELLOW	LR UNLOCK	LED 25	---	---	---
LED 12	CN 12 PIN 1	YELLOW	LF UNLOCK	LED 26	---	---	---
LED 13	CN11 PIN 12	YELLOW	UR UNLOCK	LED 27	---	---	---
LED 14	CN 12 PIN 12	YELLOW	UF UNLOCK	LED 28	NOT USED	RED	NOT USED



AP22694 ROOM 2  
LED LAYOUT

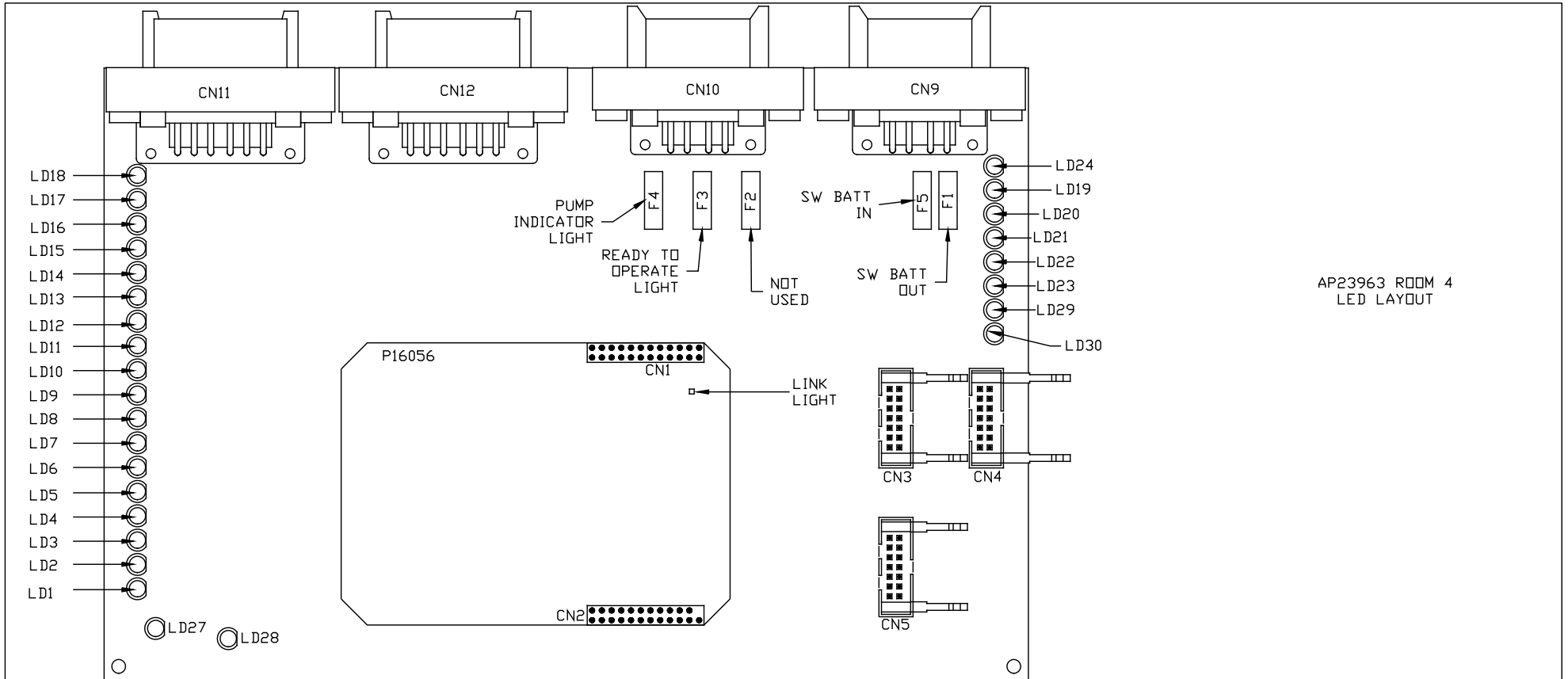
LED #	CONNECTOR	COLOR	DESCRIPTION	LED #	CONNECTOR	COLOR	DESCRIPTION
LED 1	CN10 PIN 4	RED	EXTEND	LED 15	CN 11 PIN 4	GREEN	LR LOCK
LED 2	CN10 PIN 5	RED	RETRACT	LED 16	CN 12 PIN 4	GREEN	LF LOCK
LED 3	NOT USED	GREEN	NOT USED	LED 17	CN 11 PIN 9	GREEN	UR LOCK
LED 4	NOT USED	YELLOW	NOT USED	LED 18	CN 12 PIN 9	GREEN	UF LOCK
LED 5	NOT USED	YELLOW	NOT USED	LED 19	CN11/CN12 PIN 7	RED	SW 12V
LED 6	CN 12 PIN 2	YELLOW	FRONT RM OUT	LED 20	CN9 PIN 3	RED	SW BATT
LED 7	NOT USED	GREEN	NOT USED	LED 21	CN10 PIN 3	RED	PUMP INDICATOR
LED 8	NOT USED	GREEN	NOT USED	LED 22	CN10 PIN 2	RED	READY TO OPERATE
LED 9	CN 11 PIN 10	GREEN	UR ROOM IN	LED 23	NOT USED	RED	NOT USED
LED 10	CN 12 PIN 10	GREEN	UF ROOM IN	LED 24	CN 10 PIN 7	RED	SYSTEM WAKE UP
LED 11	CN 11 PIN 1	YELLOW	LR UNLOCK	LED 25	---	---	---
LED 12	CN 12 PIN 1	YELLOW	LF UNLOCK	LED 26	---	---	---
LED 13	CN11 PIN 12	YELLOW	UR UNLOCK	LED 27	---	---	---
LED 14	CN 12 PIN 12	YELLOW	UF UNLOCK	LED 28	NOT USED	RED	NOT USED



AP23963 ROOM 3  
LED LAYOUT

LED #	CONNECTOR	COLOR	DESCRIPTION	LED #	CONNECTOR	COLOR	DESCRIPTION
LED 1	CN10 PIN 4	RED	EXTEND	LED 15	CN 11 PIN 4	GREEN	LR LOCK
LED 2	CN10 PIN 5	RED	RETRACT	LED 16	CN 12 PIN 4	GREEN	LF LOCK
LED 3	NOT USED	GREEN	NOT USED	LED 17	CN 11 PIN 9	GREEN	UR LOCK
LED 4	NOT USED	YELLOW	NOT USED	LED 18	CN 12 PIN 9	GREEN	UF LOCK
LED 5	NOT USED	YELLOW	NOT USED	LED 19	CN11/CN12 PIN 7	RED	SW 12V
LED 6	CN 12 PIN 2	YELLOW	FRONT RM OUT	LED 20	CN9 PIN 3	RED	SW BATT
LED 7	NOT USED	GREEN	NOT USED	LED 21	CN10 PIN 3	RED	PUMP INDICATOR
LED 8	NOT USED	GREEN	NOT USED	LED 22	CN10 PIN 2	RED	READY TO OPERATE
LED 9	CN 11 PIN 10	GREEN	UR ROOM IN	LED 23	NOT USED	RED	NOT USED
LED 10	CN 12 PIN 10	GREEN	UF ROOM IN	LED 24	CN 10 PIN 7	RED	SYSTEM WAKE UP
LED 11	CN 11 PIN 1	YELLOW	LR UNLOCK	LED 27	NOT USED	RED	NOT USED
LED 12	CN 12 PIN 1	YELLOW	LF UNLOCK	LED 28	NOT USED	RED	NOT USED
LED 13	CN11 PIN 12	YELLOW	UR UNLOCK	LED 29	NOT USED	RED	NOT USED
LED 14	CN 12 PIN 12	YELLOW	UF UNLOCK	LED 30	NOT USED	RED	NOT USED





LED #	CONNECTOR	COLOR	DESCRIPTION	LED #	CONNECTOR	COLOR	DESCRIPTION
LED 1	CN 10 PIN 4	RED	EXTEND	LED 15	CN 11 PIN 4	GREEN	LR LOCK
LED 2	CN 10 PIN 5	RED	RETRACT	LED 16	CN 12 PIN 4	GREEN	LF LOCK
LED 3	NOT USED	GREEN	NOT USED	LED 17	CN 11 PIN 9	GREEN	UR LOCK
LED 4	NOT USED	YELLOW	NOT USED	LED 18	CN 12 PIN 9	GREEN	UF LOCK
LED 5	NOT USED	YELLOW	NOT USED	LED 19	CN11/CN12 PIN 7	RED	SW 12V
LED 6	CN 12 PIN 2	YELLOW	FRONT RM OUT	LED 20	CN9 PIN 3	RED	SW BATT
LED 7	NOT USED	GREEN	NOT USED	LED 21	CN10 PIN 3	RED	PUMP INDICATOR
LED 8	NOT USED	GREEN	NOT USED	LED 22	CN10 PIN 2	RED	READY TO OPERATE
LED 9	CN 11 PIN 10	GREEN	UR ROOM IN	LED 23	NOT USED	RED	NOT USED
LED 10	CN 12 PIN 10	GREEN	UF ROOM IN	LED 24	CN 10 PIN 7	RED	SYSTEM WAKE UP
LED 11	CN 11 PIN 1	YELLOW	LR UNLOCK	LED 27	NOT USED	RED	NOT USED
LED 12	CN 12 PIN 1	YELLOW	LF UNLOCK	LED 28	CN12 PIN 11	RED	PSW SYNC CYL
LED 13	CN11 PIN 12	YELLOW	UR UNLOCK	LED 29	---	RED	---
LED 14	CN 12 PIN 12	YELLOW	UF UNLOCK	LED 30	NOT USED	RED	NOT USED

MP88693 Y  
02MAR05