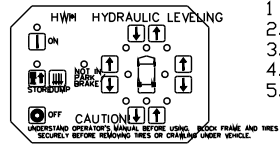
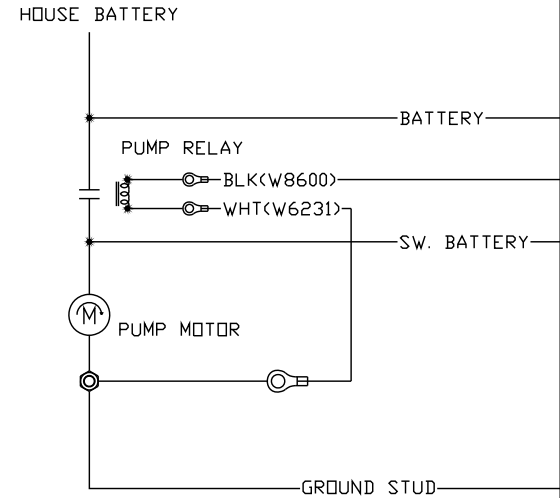
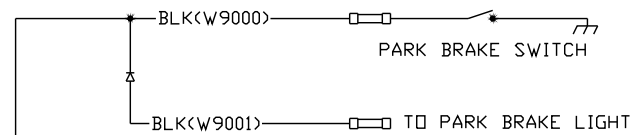
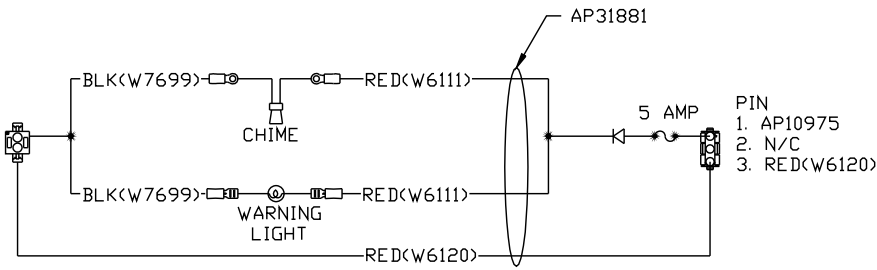


NOTE: AP31351 TOUCH PANEL AND AP31812 CHIME KIT WHICH INCLUDES AP31881 ARE ORDERED SEPARATELY FROM HWH CORP.



- PIN
1. YELLOW CAN HIGH
  2. GREEN CAN LOW
  3. CAN SHIELD
  4. WHT(W6230) GROUND
  5. RED(W6800) SW. BATTERY



- RED(W6120)
- BLK(W9000)
- BLK(W7699)
- YELLOW
- GREEN
- SHIELD
- WHITE(W6230)
- RED(W6800)

AP31879

| NO. | DATE    | REVISION               |
|-----|---------|------------------------|
| 4   | 18DEC03 | CORRECTED WIRE NUMBERS |
| 3   | 08SEP03 | UPDATED NOTE           |
| 2   | 08SEP03 | ADDED AP31881          |
| 1   | 08SEP03 | WAS AP31341            |

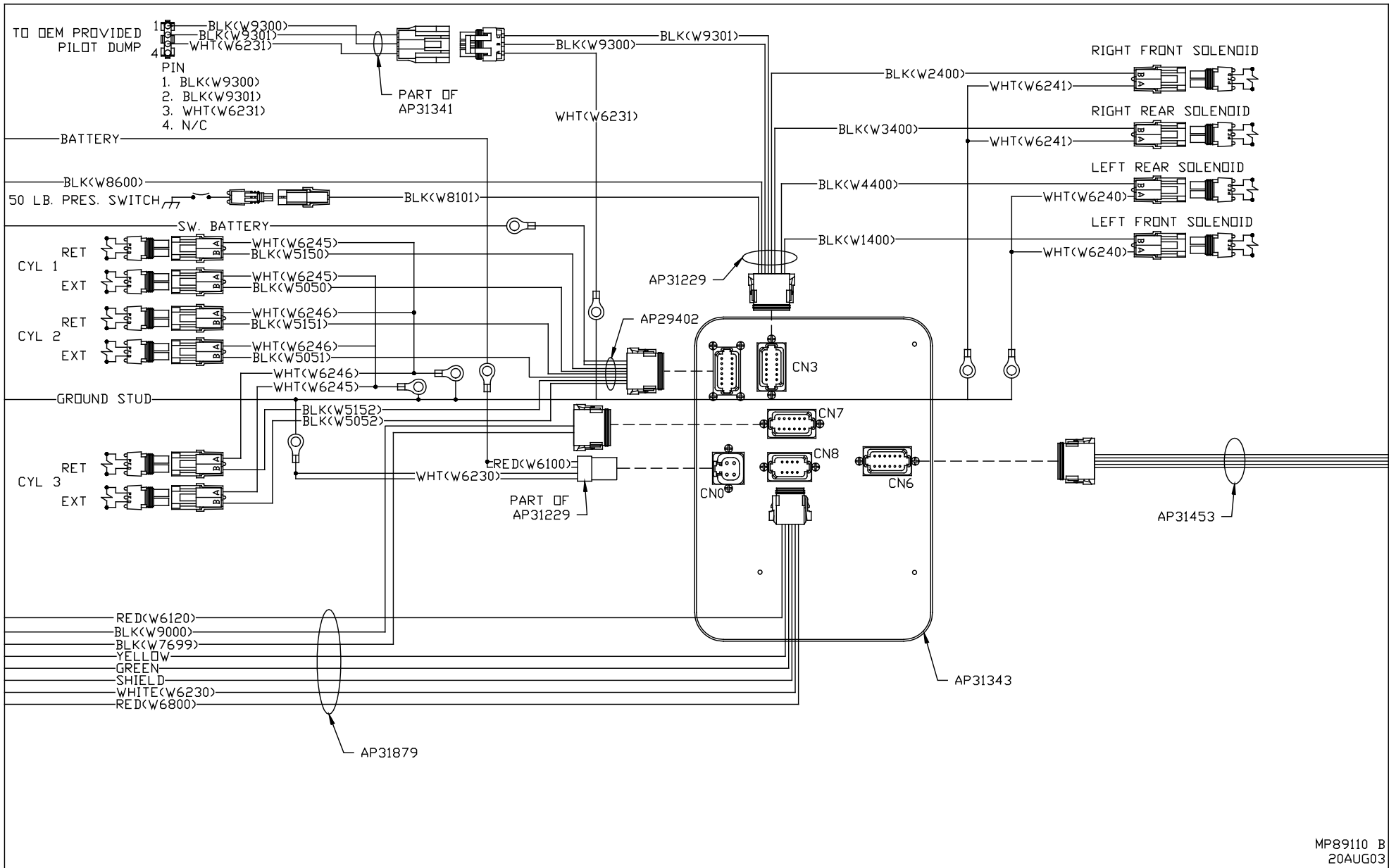
HWH I-80 EXIT 267 SOUTH  
RT 1 MOSCOW, IOWA 52760

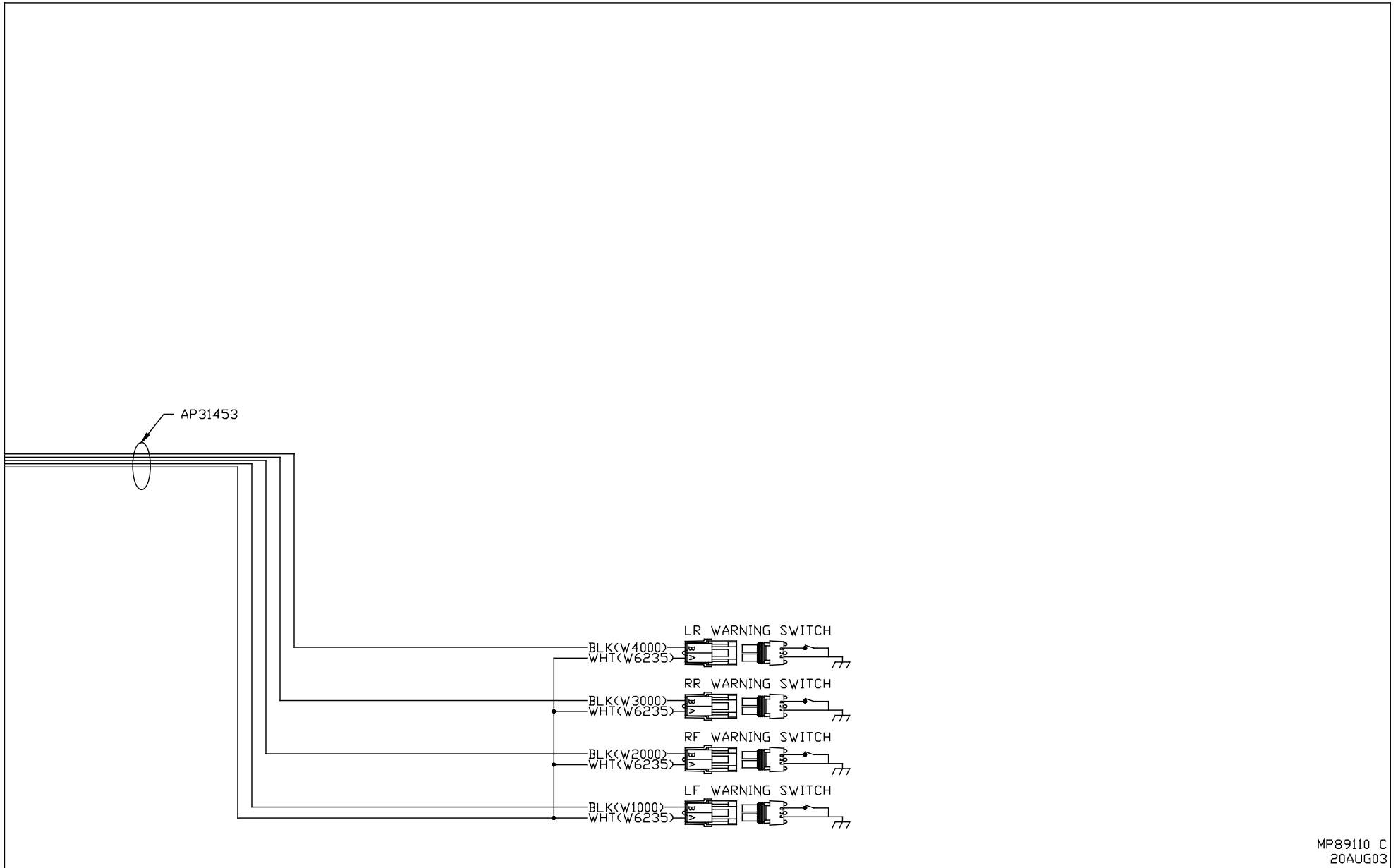
SCALE 1:3 DATE 20AUG03 DRAWN BY .

SYSTEM SCHEMATIC ELEC

THE INFORMATION DISCLOSED ON THIS DRAWING IS CONFIDENTIAL AND MUST NOT BE DISCLOSED OR USED IN ANY MANNER WHICH WILL BE DETRIMENTAL TO THE HWH CORPORATION

DRAWING NUMBER  
MP89110 A/F



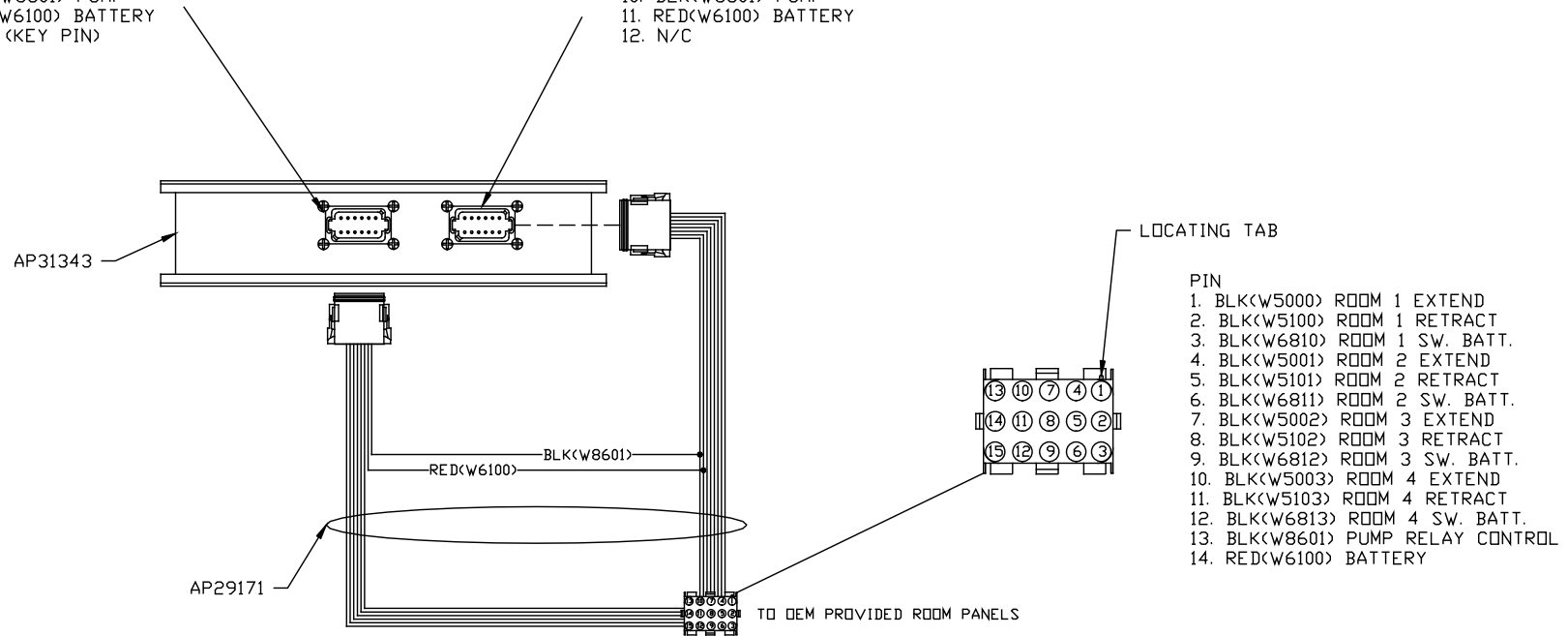


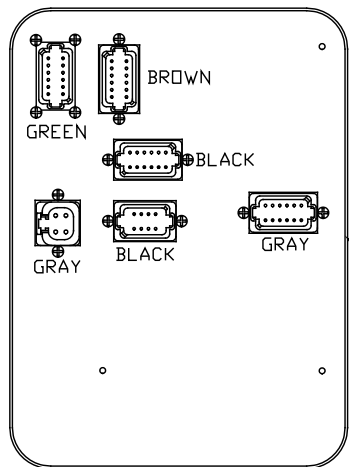
BLACK 12 PIN

1. BLK(W6810) SW. BATT ROOM 1
2. BLK(W5000) EXTEND ROOM 1
3. BLK(W5100) RETRACT ROOM 1
4. BLK(W6811) SW. BATT ROOM 2
5. BLK(W5001) EXTEND ROOM 2
6. BLK(W5101) RETRACT ROOM 2
7. N/C
8. N/C (KEY PIN)
9. N/C
10. BLK(W8601) PUMP
11. RED(W6100) BATTERY
12. N/C (KEY PIN)

BLACK 12 PIN

1. BLK(W6812) SW. BATT ROOM 3
2. BLK(W5002) EXTEND ROOM 3
3. BLK(W5102) RETRACT ROOM 3
4. BLK(W6813) SW. BATT ROOM 4
5. BLK(W5003) EXTEND ROOM 4
6. BLK(W5103) RETRACT ROOM 4
7. N/C
8. N/C (KEY PIN)
9. N/C (KEY PIN)
10. BLK(W8601) PUMP
11. RED(W6100) BATTERY
12. N/C





AP31343

GREEN  
PIN

- 1 BLK<W5050> CYLINDER 1 EXTEND
- 2 BLK<W5150> CYLINDER 1 RETRACT
- 3 BLK<W5051> CYLINDER 2 EXTEND
- 4 BLK<W5151> CYLINDER 2 RETRACT
- 5 BLK<W5052> CYLINDER 3 EXTEND
- 6 BLK<W5152> CYLINDER 3 RETRACT
- 7 N/C
- 8 N/C
- 9 BLK<W6810> SW. BATTERY
- 10 BLK<W6810> SW. BATTERY
- 11 BLK<W6810> SW. BATTERY
- 12 BLK<W6810> SW. BATTERY

BROWN (CN3)  
PIN

- 1 N/C
- 2 N/C
- 3 BLK<W8101> 50 LB PRESS SW
- 4 N/C
- 5 BLK<W1400> LF SOLENOID
- 6 N/C
- 7 N/C
- 8 BLK<W4400> LR SOLENOID
- 9 BLK<W3400> RR SOLENOID
- 10 BLK<W2400> RF SOLENOID
- 11 N/C
- 12 BLK<W8600> PUMP RELAY CONTROL

BLACK (CN7)  
PIN

- 1 N/C
- 2 N/C
- 3 N/C
- 4 N/C
- 5 N/C
- 6 N/C
- 7 BLK<W9000> PARK BRAKE
- 8 N/C
- 9 N/C
- 10 N/C
- 11 BLK<W7699> WARN/CHIME CONTROL
- 12 N/C

GRAY (CN0)  
PIN

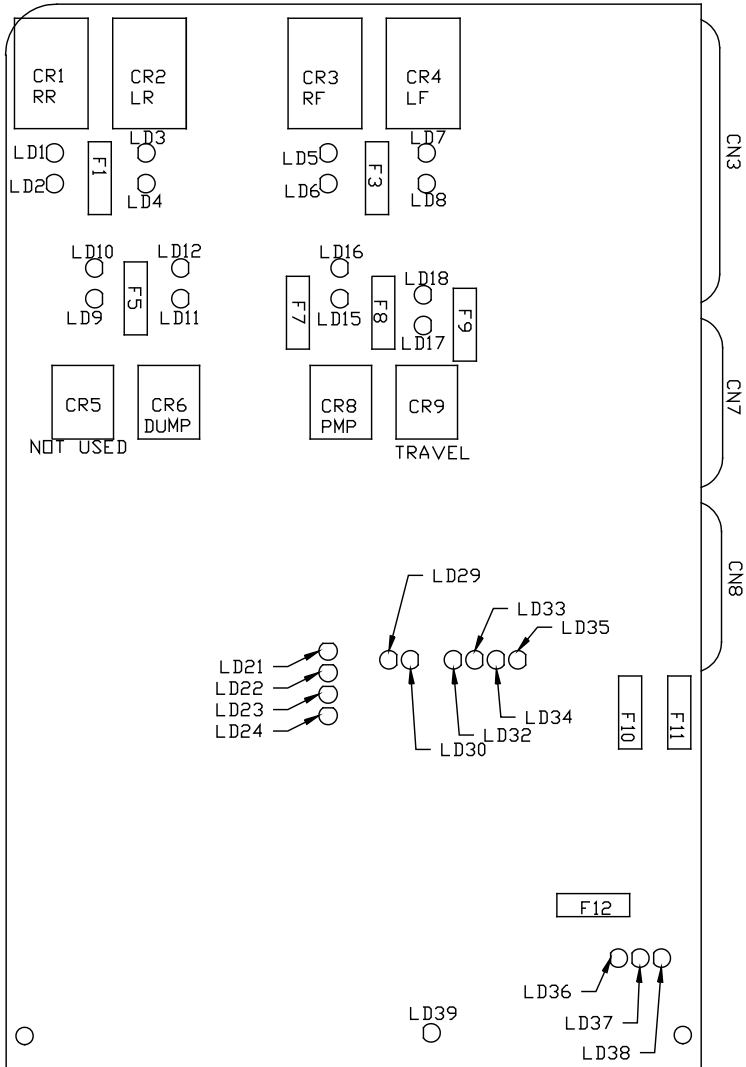
- 1 RED<W6100> BATT
- 2 RED<W6100> BATT
- 3 WHT<W6230> GROUND
- 4 WHT<W6230> GROUND

BLACK (CN8)  
PIN

- 1 N/C
- 2 N/C
- 3 RED<W6800> SW BATT
- 4 WHT<W6230> GROUND
- 5 CAN SHIELD
- 6 RED<W6120> ACCESSORY
- 7 GREEN
- 8 YELLOW

GRAY (CN6)  
PIN

- 1 N/C
- 2 N/C
- 3 BLK<W1000> LF WARN SW
- 4 BLK<W2000> RF WARN SW
- 5 N/C
- 6 N/C
- 7 N/C
- 8 N/C
- 9 BLK<W3000> RR WARN SW
- 10 BLK<W4000> LR WARN SW
- 11 N/C
- 12 WHT<W6235> GROUND



| LED #  | COLOR  | DESCRIPTION            |
|--------|--------|------------------------|
| LED 1  | YELLOW | RR COIL                |
| LED 2  | RED    | RR CONTACT             |
| LED 3  | YELLOW | LR COIL                |
| LED 4  | RED    | LR CONTACT             |
| LED 5  | YELLOW | RF COIL                |
| LED 6  | RED    | RF CONTACT             |
| LED 7  | YELLOW | LF COIL                |
| LED 8  | RED    | LF CONTACT             |
| LED 9  | YELLOW | ---                    |
| LED 10 | RED    | ---                    |
| LED 11 | YELLOW | DUMP COIL              |
| LED 12 | RED    | DUMP CONTACT           |
| LED 13 | ---    | ---                    |
| LED 14 | ---    | ---                    |
| LED 15 | YELLOW | PUMP COIL              |
| LED 16 | RED    | PUMP CONTACT           |
| LED 17 | YELLOW | TRAVEL COIL            |
| LED 18 | RED    | TRAVEL CONTACT         |
| LED 19 | ---    | ---                    |
| LED 20 | ---    | ---                    |
| LED 21 | YELLOW | LF WARN SW             |
| LED 22 | YELLOW | RF WARN SW             |
| LED 23 | YELLOW | RR WARN SW             |
| LED 24 | YELLOW | LR WARN SW             |
| LED 25 | ---    | ---                    |
| LED 26 | ---    | ---                    |
| LED 27 | ---    | ---                    |
| LED 28 | ---    | ---                    |
| LED 29 | RED    | NOT USED               |
| LED 30 | YELLOW | NOT USED               |
| LED 31 | ---    | ---                    |
| LED 32 | RED    | MASTER WARNING CONTROL |
| LED 33 | GREEN  | 50 LB PSW INPUT        |
| LED 34 | RED    | JACK INTERRUPT         |
| LED 35 | RED    | PARK BRAKE             |
| LED 36 | RED    | BOARD ENABLED          |
| LED 37 | RED    | ACCESSORY IN           |
| LED 38 | RED    | ACCESSORY OUT          |
| LED 39 | RED    | LINK LIGHT             |

| FUSE | RATING   | DESCRIPTION      |
|------|----------|------------------|
| F1   | 15 AMP   | RR OUTPUT        |
| F2   | ---      | ---              |
| F3   | 15 AMP   | RF OUTPUT        |
| F4   | ---      | ---              |
| F5   | NOT USED | ---              |
| F6   | ---      | ---              |
| F7   | 5 AMP    | MASTER OUTPUT    |
| F8   | 5 AMP    | PUMP OUTPUT      |
| F9   | 5 AMP    | TRAVEL OUTPUT    |
| F10  | 7.5 AMP  | ACC INPUT        |
| F11  | 3 AMP    | WARN LITE SUPPLY |
| F12  | 10 AMP   | ACC OUTPUT       |