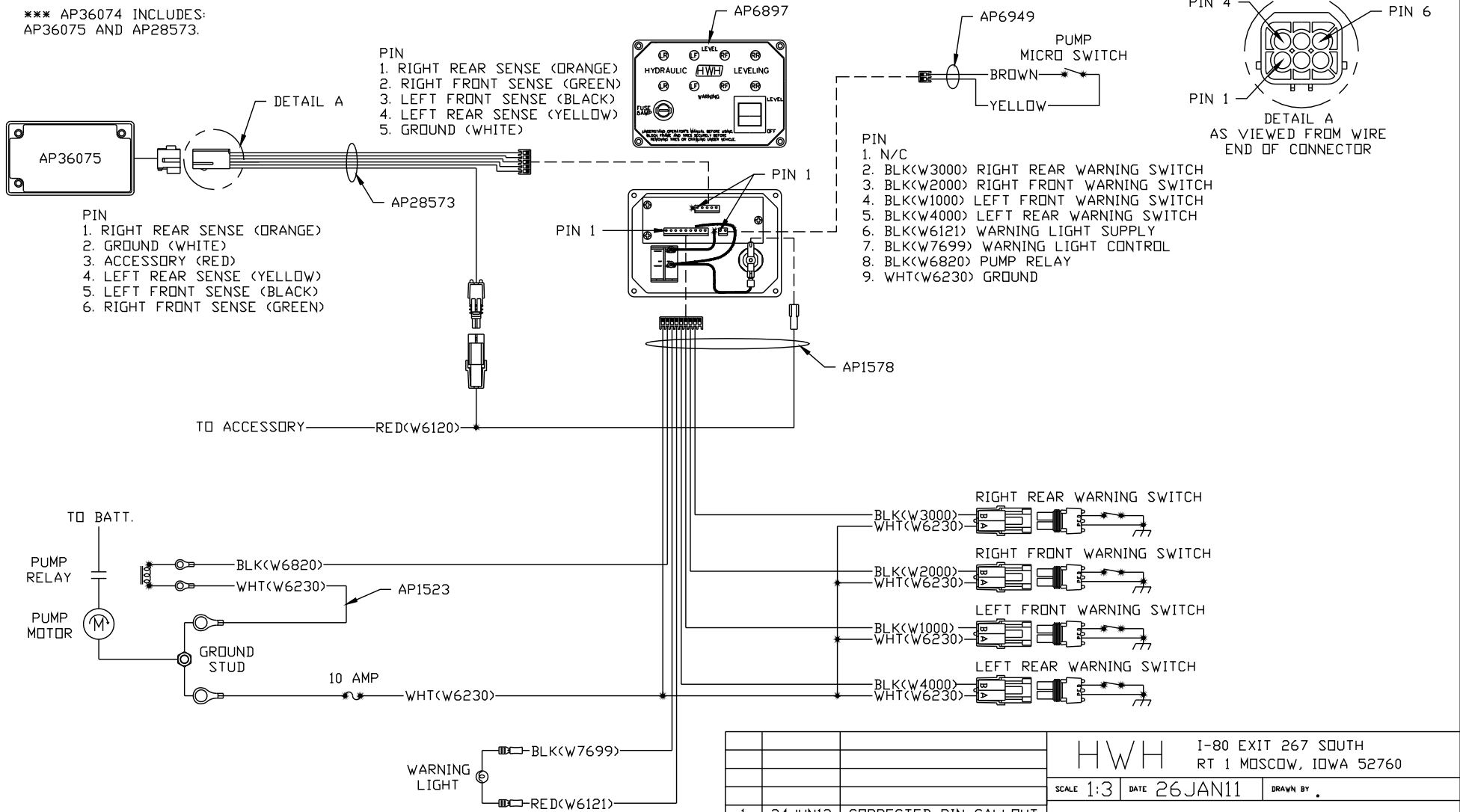


*** AP36074 INCLUDES:
AP36075 AND AP28573.



- PIN**
1. N/C
 2. BLK(W3000) RIGHT REAR WARNING SWITCH
 3. BLK(W2000) RIGHT FRONT WARNING SWITCH
 4. BLK(W1000) LEFT FRONT WARNING SWITCH
 5. BLK(W4000) LEFT REAR WARNING SWITCH
 6. BLK(W6121) WARNING LIGHT SUPPLY
 7. BLK(W7699) WARNING LIGHT CONTROL
 8. BLK(W6820) PUMP RELAY
 9. WHT(W6230) GROUND

			HWH		I-80 EXIT 267 SOUTH RT 1 MOSCOW, IOWA 52760	
			SCALE 1:3	DATE 26JAN11	DRAWN BY .	
1	24JUN13	CORRECTED PIN CALLOUT	SYSTEM SCHEMATIC ELEC			
NO.	DATE	REVISION				
THE INFORMATION DISCLOSED ON THIS DRAWING IS CONFIDENTIAL AND MUST NOT BE DISCLOSED OR USED IN ANY MANNER WHICH WILL BE DETRIMENTAL TO THE HWH CORPORATION			DRAWING NUMBER MP905910			

NOTE: INSTALLATION MUST CONFORM TO GOOD SHOP PRACTICES, SAE STANDARDS, RVIA STANDARDS, AND OTHER APPLICABLE STANDARDS.