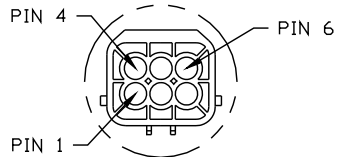
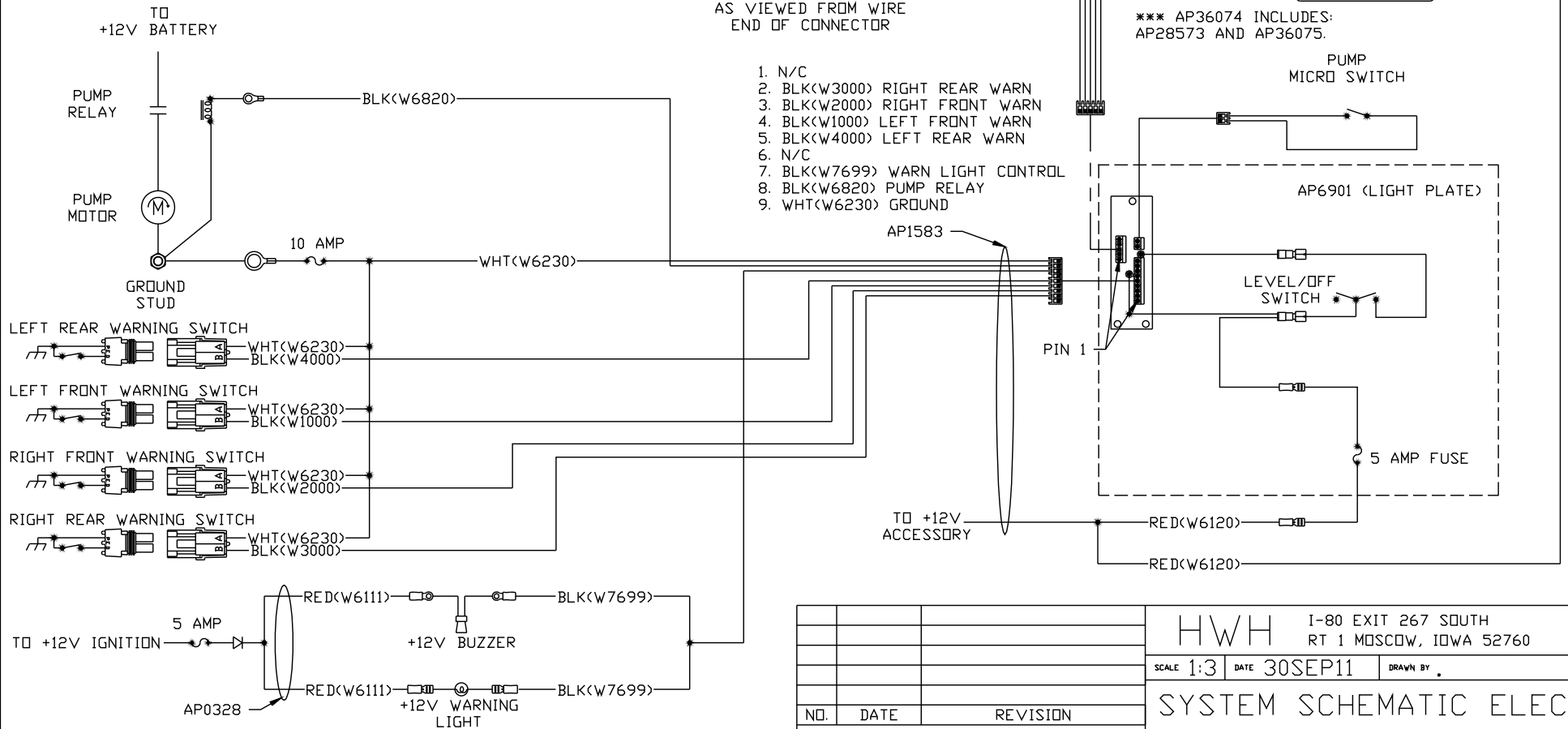


- PIN
1. RIGHT REAR SENSE (ORANGE)
  2. GROUND (WHITE)
  3. ACCESSORY (RED)
  4. LEFT REAR SENSE (YELLOW)
  5. LEFT FRONT SENSE (BLACK)
  6. RIGHT FRONT SENSE (GREEN)



DETAIL A  
AS VIEWED FROM WIRE  
END OF CONNECTOR

1. N/C
2. BLK(W3000) RIGHT REAR WARN
3. BLK(W2000) RIGHT FRONT WARN
4. BLK(W1000) LEFT FRONT WARN
5. BLK(W4000) LEFT REAR WARN
6. N/C
7. BLK(W7699) WARN LIGHT CONTROL
8. BLK(W6820) PUMP RELAY
9. WHT(W6230) GROUND



NOTE: INSTALLATION MUST CONFORM TO GOOD SHOP PRACTICES, SAE STANDARDS, RVIA STANDARDS, AND OTHER APPLICABLE STANDARDS.

NO.	DATE	REVISION

HWH I-80 EXIT 267 SOUTH  
RT 1 MOSCOW, IOWA 52760

SCALE 1:3 DATE 30SEP11 DRAWN BY .

SYSTEM SCHEMATIC ELEC

THE INFORMATION DISCLOSED ON THIS DRAWING IS CONFIDENTIAL AND MUST NOT BE DISCLOSED OR USED IN ANY MANNER WHICH WILL BE DETRIMENTAL TO THE HWH CORPORATION

DRAWING NUMBER  
MP906980