

6000# Jack Kit: Straight-Acting Jacks

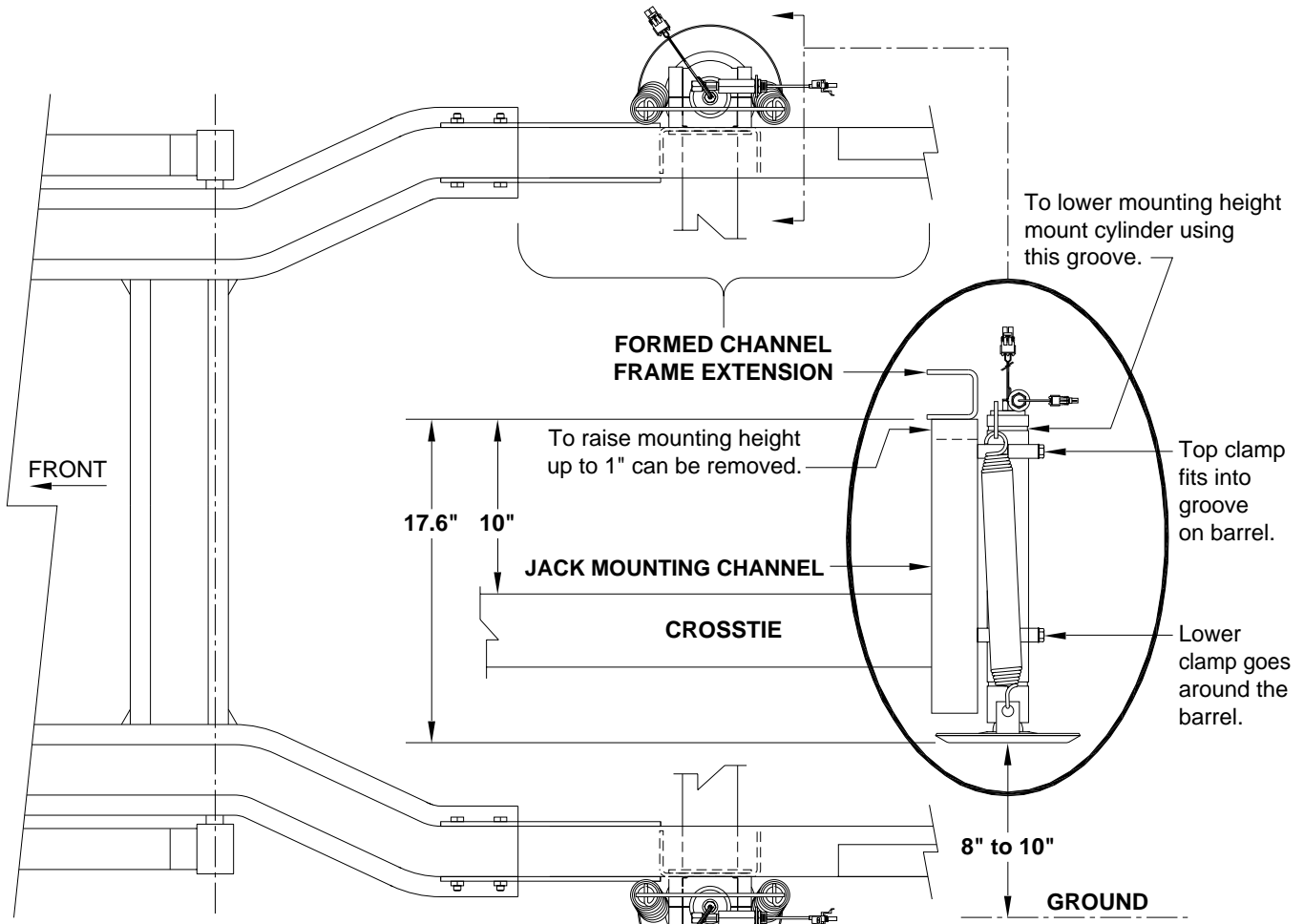
Application: For rear of 2012 Winnebago View & Itasca Navion 24M Models

Mfr. #: AP50555 - 6000# Jack Kit

Includes: 2 - AP46762 6000# x 13" Stroke Jacks
 2 - AP50550 Jack Mounting Channel
 1 - AP48139 Outer Clamp Kit

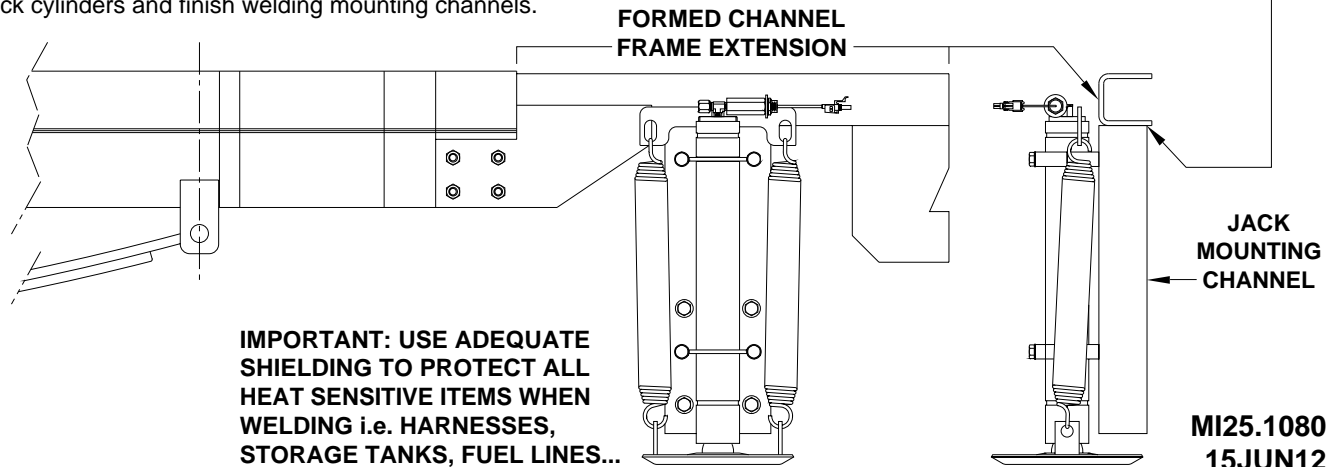
1 - AP50548 - Crosstie
 1 - AP16184 - Crosstie Hardware Kit

M.S.R.P.: See Item Price Listing



PROCEDURE: Bolt jacks to mounting channels (finger tight). Position assemblies into area located beneath the **formed channel frame extension**. Shift each assembly forwards or backwards as needed to clear obstructions, maintain a straight path from one jack to the other and properly gauged with the crosstie. The jacks can not be staggered front to rear. Check jack mounting height. When jacks are positioned correctly tack weld in place. Bolt the crosstie for alignment and fit. If all is good, remove the jack cylinders and finish welding mounting channels.

IMPORTANT: WELD JACK MOUNTING CHANNEL TO FORMED CHANNEL FRAME EXTENSION. DO NOT USE THIS JACK MOUNT IN ANY OTHER LOCATION.



MI25.1080
 15JUN12